

# SPECIFICATION



 75t

 47.5m

 66.5m

# SRC750T

SANY ROUGH TERRAIN CRANE

QUALITY CHANGES THE WORLD

[crane.sanyglobal.com](http://crane.sanyglobal.com)

It is one of the core business units in SANY Group, specializing in the development and manufacturing of high-end wheel cranes, crawler cranes and tower cranes, including the complete range of wheel cranes from 8 to 1800t, crawler cranes from 25 to 4500t and tower cranes from 6 to 185t.

三一集团旗下核心事业部，从事高端轮式起重机、履带起重机、塔式起重机系列产品的研发制造。覆盖8-1800吨全吨位轮式起重机，25-4500吨全吨位履带起重机，6-185吨塔式起重机。





# SRC750T

SANY ROUGH TERRAIN CRANE  
75T LIFTING CAPACITY

A 75t rough terrain crane with five section 47.5m boom, featuring stronger capacity yet reduced self-weight. Jib swingout process is controlled hydraulically by one operator via remote device, allowing quick setup once arriving at jobsite. Key components come from International name brands. Operator comfort is improved by brand new cab design.

一款最大起重量75吨，5节臂，最大主臂长47.5m的越野起重机，自重轻，性能强，副臂远程操控，液电辅助单人操作完成收展，核心部件均为国际知名供应商提供，配备全新操纵室，驾驶、操作舒适度全面升级。



## **Strong lifting capacity**

Best in class

### **超强性能**

性能超越行业同吨位

## **All new operator's cab**

Ergonomic concept of safety and comfort

### **全新操纵室**

操作安全、舒适、人机工程全面升级

## **Auto-swing jib**

Jib deployment in by one operator via remote control

### **自动化副臂**

远程控制单人操作完成收展

## **Convenient Transport**

One-trailer transport at low operational cost

### **超便捷运输**

一车整运，运营成本低

## **Brand-name components**

DF Cummins engine/Dana transmission  
/Kessler axles

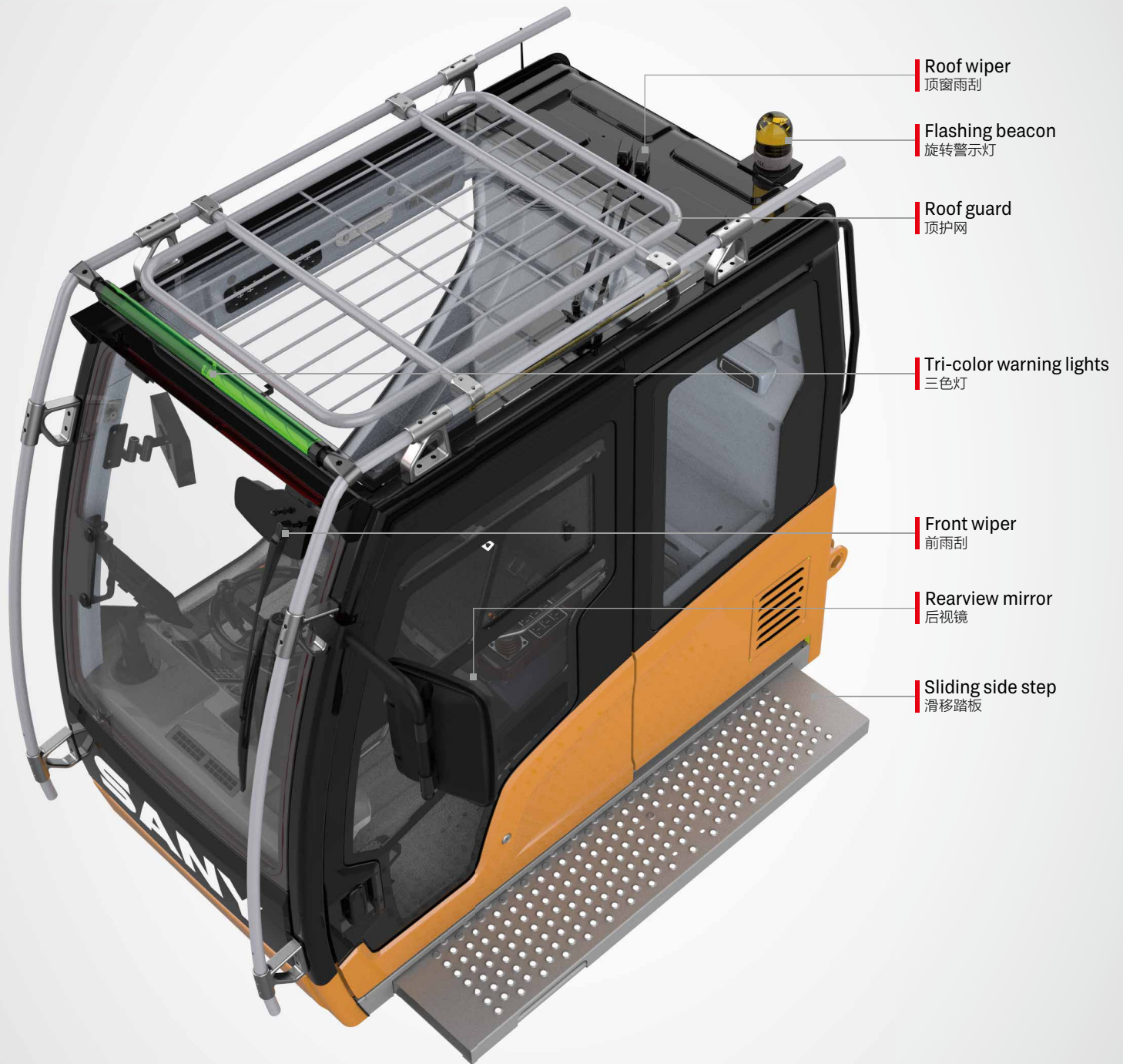
### **国际知名供应商**

东风康明斯发动机/德纳变速箱/凯斯兰车桥



# All New Operator's Cab

## 全新操纵室



Roof wiper  
顶窗雨刮

Flashing beacon  
旋转警示灯

Roof guard  
顶护网

Tri-color warning lights  
三色灯

Front wiper  
前雨刮

Rearview mirror  
后视镜

Sliding side step  
滑移踏板



**Safety & Reliability**  
安全可靠



**Comfort & Convenience**  
舒适便捷



**Simplicity & Efficiency**  
简单高效

## SPECIFICATION

Rearview and winch monitor  
卷扬监视器

10.1 inch LMI screen  
10.1 吋显示屏

Outrigger control panel  
支腿控制面板

Steering column  
方向柱

Pedals  
踏板布置

Upper control panel  
辅助面板

Emergency stop switch  
急停开关

Bubble level  
水平仪

Cup holder  
水杯托

Joystick  
手柄

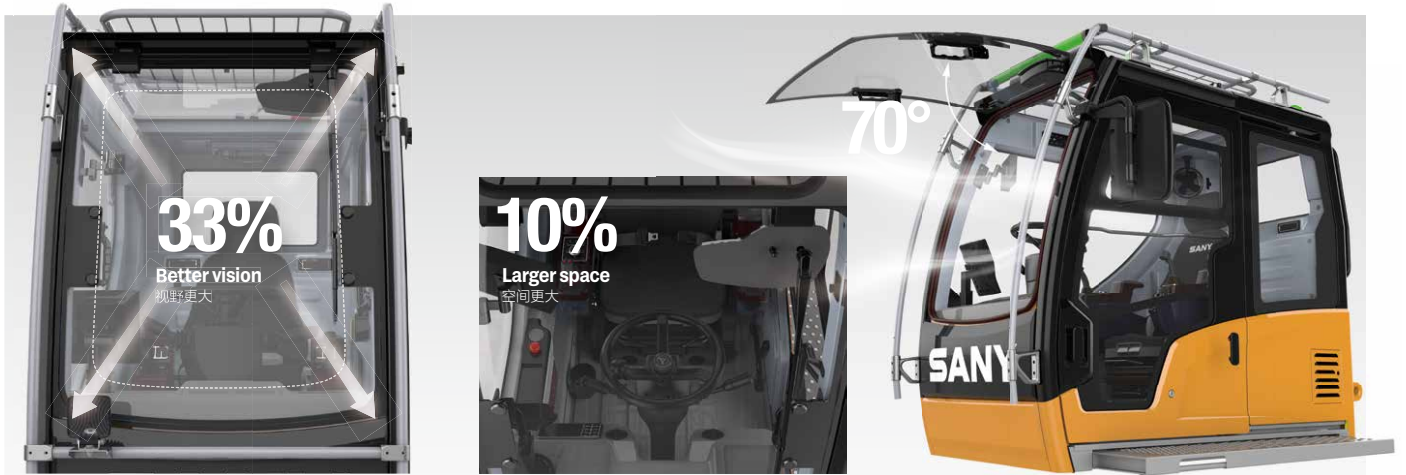
Joystick  
手柄

Left control panel  
左扶手箱控制面板

Right control panel &  
LMI navigation knob  
右扶手箱控制面板

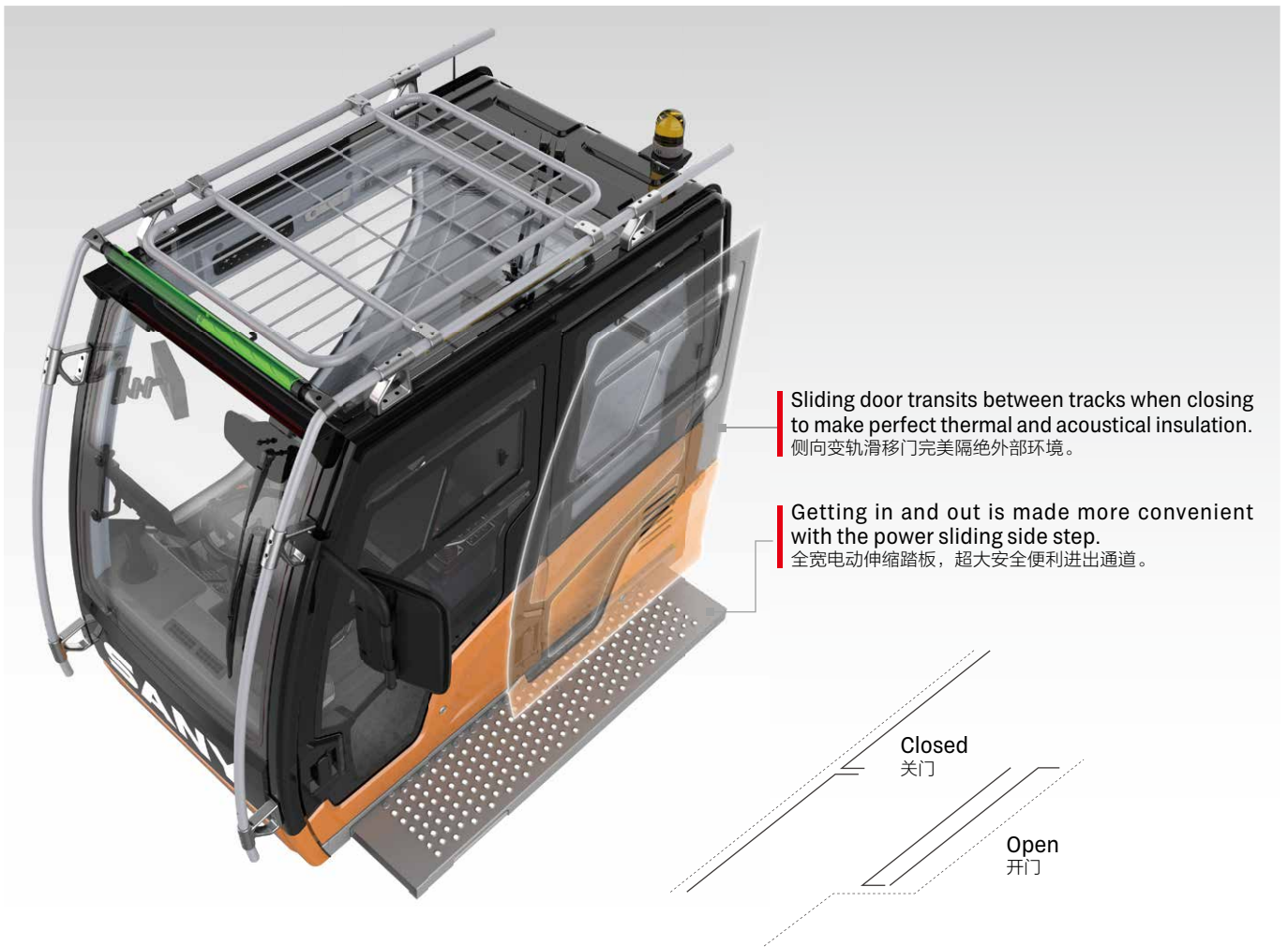
Armrest  
扶手箱

SANY



Integrating SUV genes, overall space is enlarged by 10% and forward field of vision is increased by 33%. The front windshield can be opened by 70 degrees, providing better ventilation and a second emergency exit.

融入SUV基因，整体空间增大10%，配备超大可开合70°前挡风玻璃，视野提升33%，增加空气对流，并可作为快速逃生通道。





**Adjustable** steering wheel for driving and controlling, modular control panels, and smart user interface deliver intuitive and highly efficient control.

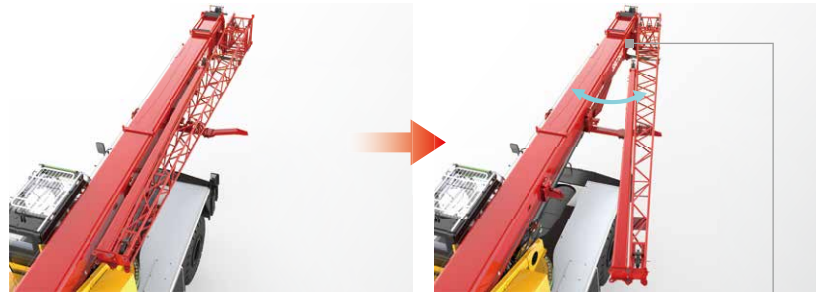
驾控一体的方向盘、模块化控制面板、UI 智能操作界面，操作简单，为高效吊装保驾护航。







## Auto-swing jib 自动副臂系统

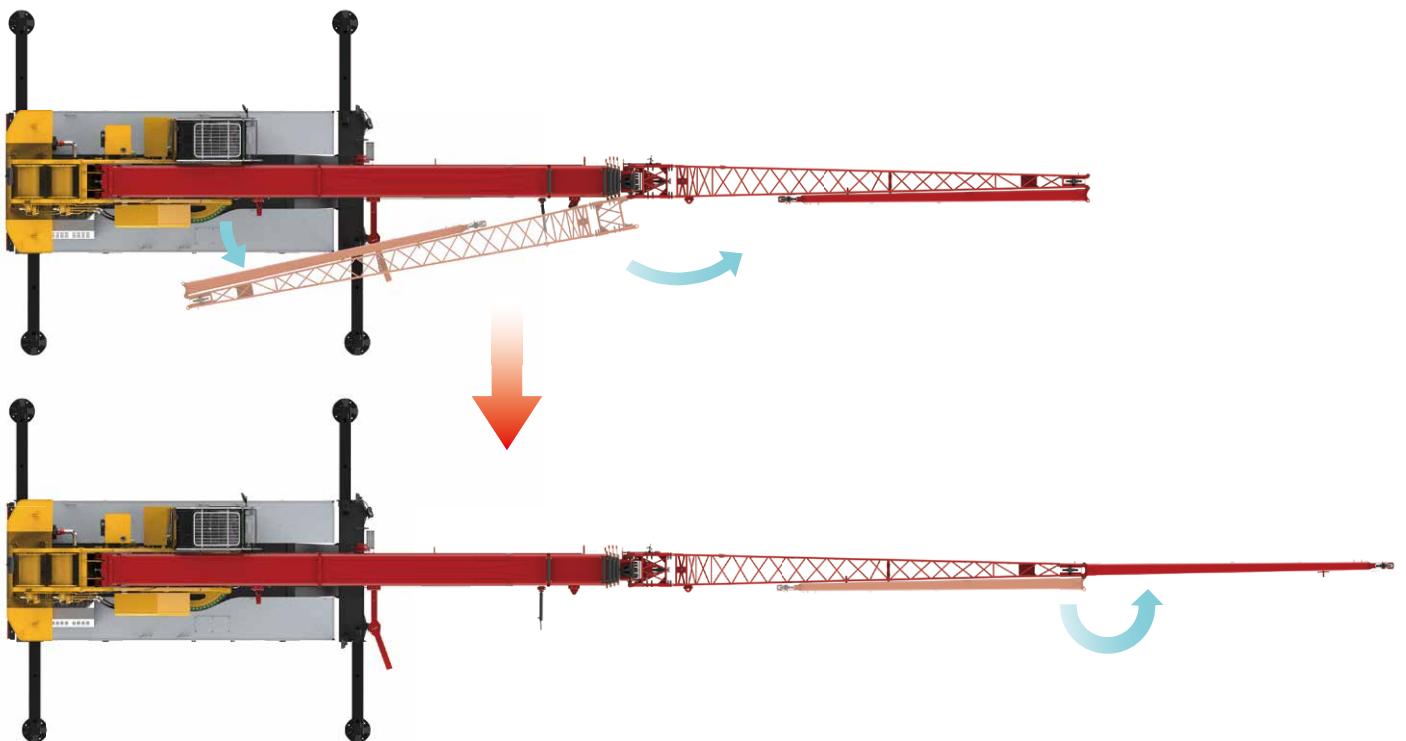
Hydraulic power assisted jib deployment, handled by one person with the use of remote controller.

液电辅助收展配合远程控制，单人操作即可完成。



-  Pin in  
插销
-  Pin out  
拔销
-  Extension  
伸展
-  Retraction  
收缩

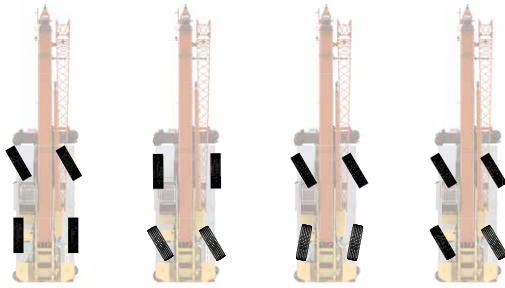
Remote controller  
遥控器



## Convenient transport 行驶运输便捷性

Four steering modes:

四种转向模型:



2 wheel front 前轮转向模式

2 wheel rear 后轮转向模式

4 wheel 四轮转向模式

Crab 蟹行模式

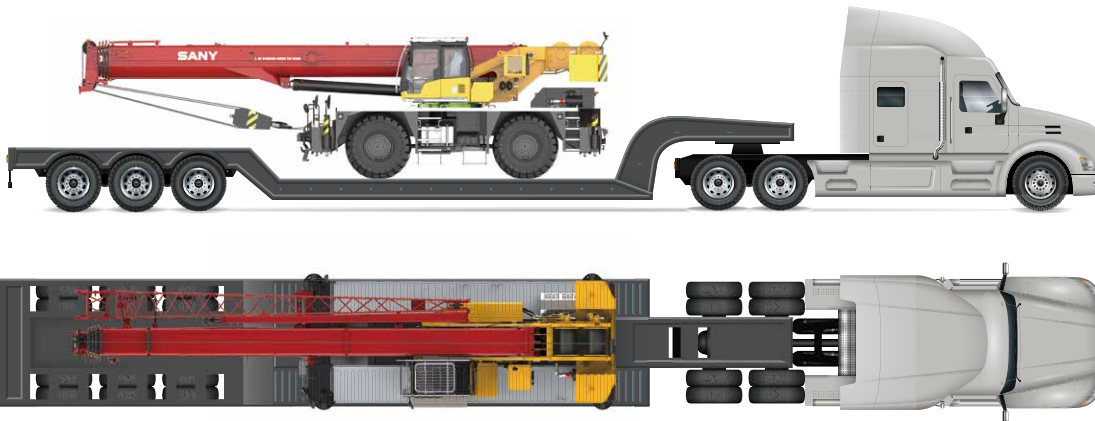


Steering control panel  
转向控制面板

## One-Trailer Transport 一车整运

The basic machine is transported at 48.6t with counterweight, jib and hooks, 3.8m wide and 3.9m high, satisfying road regulations.

主机运输尺寸为宽3.8m，高3.9m，重量为48.6t（带配重、副臂和吊钩），满足道路运输要求。



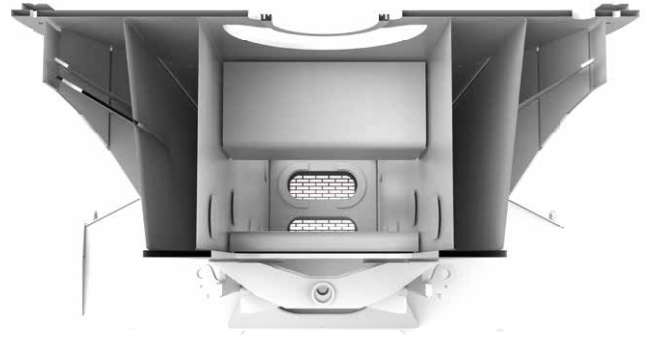
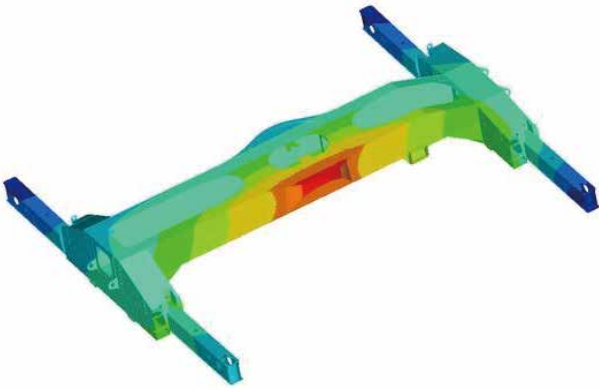
## Axle Load Distribution 轴荷分布

Items 项目		weight ( kg ) 重量	Load on front axle(kg) 前轴轴荷	Load on rear axle(kg) 后轴轴荷
Basic machine 主机		38800	26000	12800
Counterweight 配重		7600	-3400	11000
Fixed jib 副臂		1260	1900	-650
Aux. boom nose 臂尖滑轮		60	130	-80
Main hook 主钩	75t	720	1120	-320
Auxiliary hook 副钩	8t	160	170	-70

## Carrier frame 车架底盘

Inverted trapezoidal variable cross section frame is 5% less in weight and 15% stronger in rigidity.

倒梯形变截面车架，实现车架减重5%的同时，刚性提升10%。

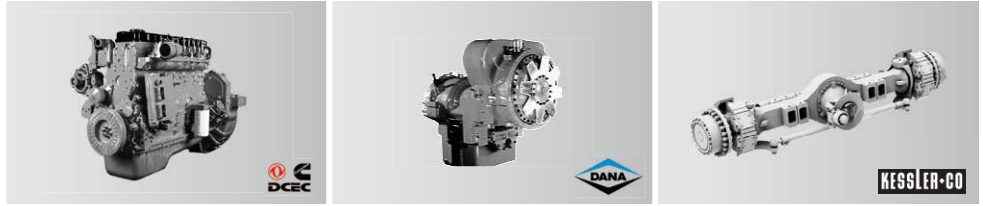


↓ 5%  
weight 重量

↑ 10%  
rigidity 刚性



## Power 动力系统



### Engine

Power comes from a DF Cummins QSB6.7 inline six-cylinder water-cooled, turbocharged and intercooled off-highway diesel engine, complying with Stage III emission standard.

Rated power: 194kW/2400rpm

Max. torque: 990N·m/1500rpm

### Transmission

Dana electronically controlled auto transmission features 6 speeds forward and 6 speeds reverse, wide ratio range, and smooth gearshift with reduced maintenance cost.

### Axle and suspension

Kessler axles, both axles are driven and steered. Front axle is mounted to the frame by independent steel plate, and rear adopts oscillation cylinders with hydraulic lockout. Driving comfort and lateral stability is therefore guaranteed on rough terrains and conditions.

#### 发动机

东风康明斯QSB6.7三阶段非道路直列六缸水冷、增压中冷柴油发动机

额定功率：194kW/2400rpm

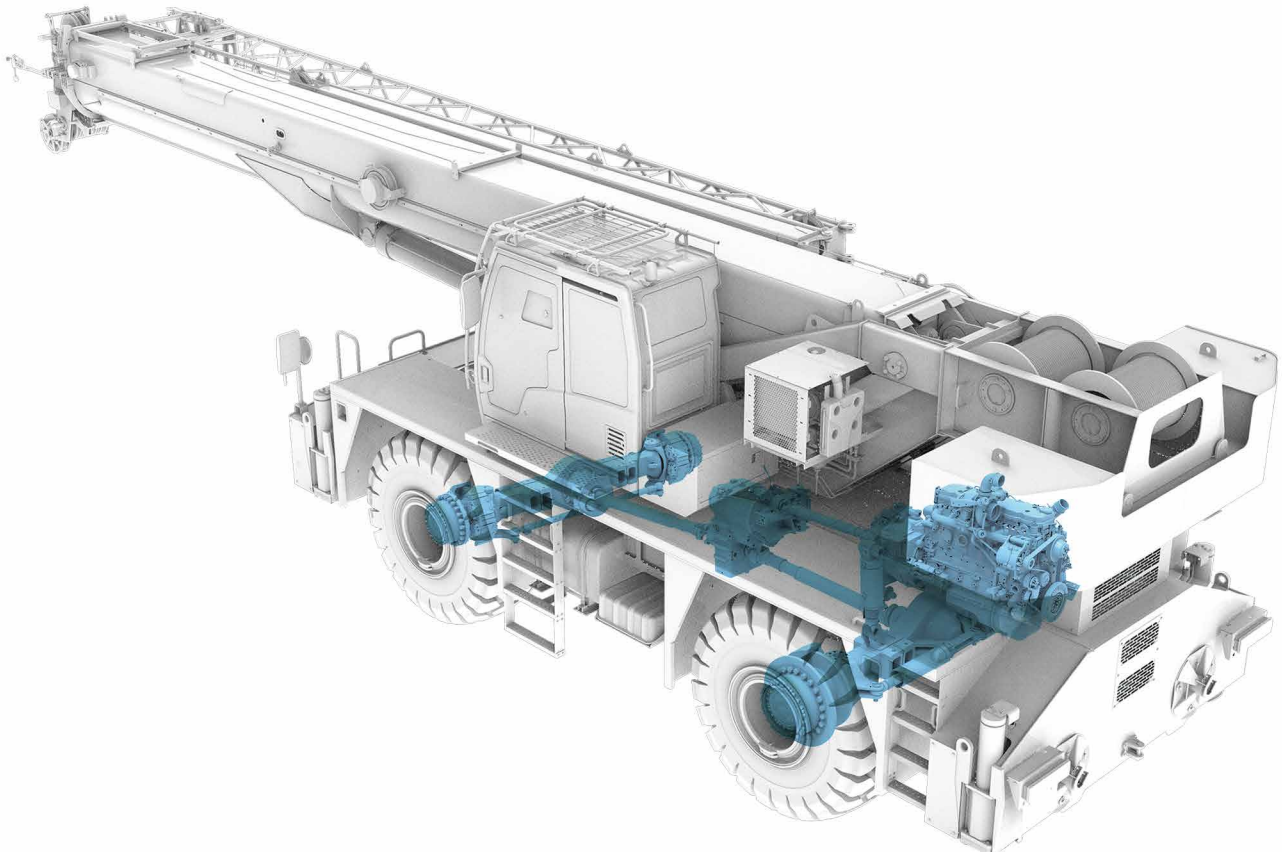
最大扭矩：990N·m/1500rpm

#### 变速箱

德纳全自动电控变速箱，6个前进挡、6个后退挡，速比范围大，换挡平顺无冲击，维修保养成本低。

#### 车桥悬挂

德国 Kessler 原装进口，前后桥均为驱动桥和转向桥。前桥采用独立式钢板连接，后桥采用摆动支架式，液压油缸闭锁悬架系统；能适用各种恶劣工况和路面，保证车辆行驶的平顺性和侧翻稳定性，驾驶舒适。



# Electrical system

## 电气系统

### Smart CAN-BUS communication system

International advanced CAN-BUS data communication network applied for display, instrument panel, I/O module, joysticks and main sensors, allowing for high-speed data transmission and quick response in less than 20ms.

### Cabling

Centralized electric cabinet and heavy-duty connector applied for cabling of superstructure, convenient for maintenance; IP rating up to 67, ensuring high reliability.

### Winch camera (optional)

Winch cameras equipped for monitoring its working condition and identifying rope disorder in time.

### Integrated bus button panel input

Various operating states displayed by button indicator lights, and one-button multi-functional operation realizable by writing various operation modes.

#### 智能总线通信系统

国际先进的分布式集成总线数据通信网络，显示器、显示仪表、I/O模块、操作手柄、主要传感器等采用CAN总线组网，高速信息传输、响应速度小于20ms。

#### 电缆布线

上车电缆布线采用集中式分线盒及重载接插件，维护方便；防护等级IP67，可靠性高。

#### 卷扬监控系统（选配）

卷扬摄像头监视卷扬工作及时发现乱绳的情况。

#### 集成总线按键面板输入

可通过按键指示灯显示各种工作状态，通过写入多种操作模式实现一键多功能。



**Centralized electric cabinet**  
集中式电控箱



**Anti-two-block limit switch**  
高度限位器



**Third wrap indicator**  
三圈保护器



**Cable reel**  
电缆卷筒



**Cable reel inside the boom**  
臂内卷筒



**Anemometer**  
风速仪

**Multi-functional screen**

Large 10.1 inch HD touch screen display with all new interface. Incorporated crane setup, load charts, working conditions, working period, virtual wall, Bluetooth, radio and diagnostics with an additional navigation knob.

**Precise load moment indicator**

SANY independently developed LMI, accuracy of 0 ~ 5%.

**高新多功能显示屏**

采用10.1寸高清显示屏，全新操作界面，可实现触摸与旋钮多方式操控。工况、力矩、发动机、变速箱、控制器IO点、工作时间统计等丰富的设备状态信息呈现，集成虚拟墙、蓝牙、收音机等多种扩展功能。

**精准力矩器系统**

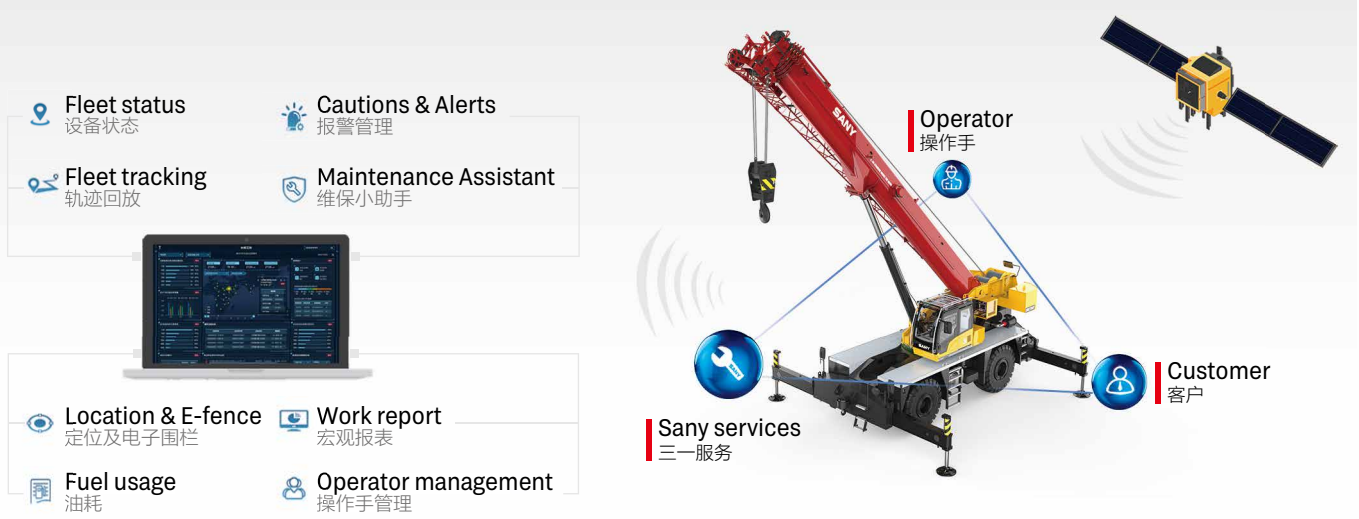
三一自主研发的力矩限制器系统，精度达0-5%。



**MachineLink<sup>+</sup>**

ROOTCLOUD T-AMS Pro device comes as standard to realize GPS trajectory, machine status, maintenance management, E-fence, alarm management, and operator management on computer or mobile MachineLink+ platform, by remote control of cranes. This telematics package greatly boosts efficiency of customer fleet management and helps provide better after-sales services.

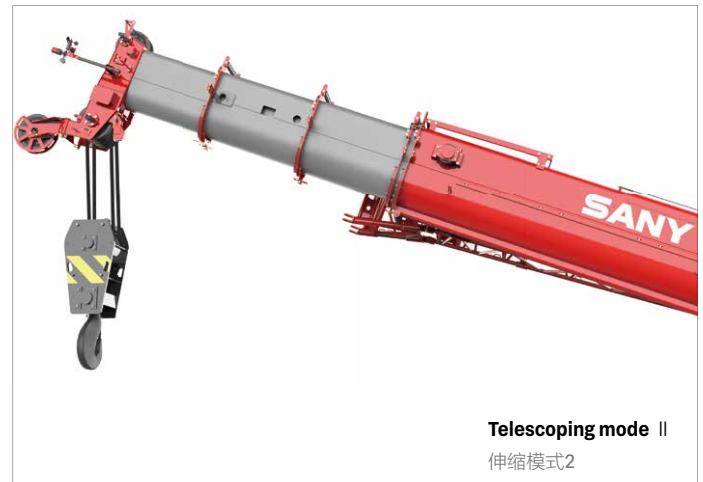
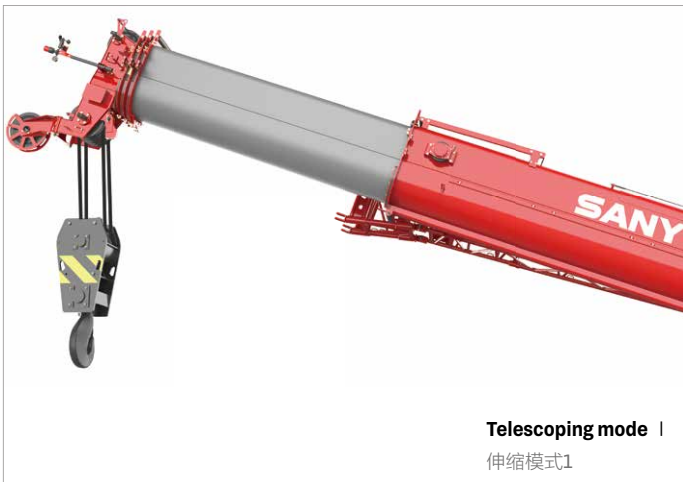
标配树根物联终端 T-AMS Pro，通过对起重机设备的远程控制，在电脑或移动端 MachineLink+ 平台实现轨迹回放、设备状态、维保设备、电子围栏、报警管理、操作手管理等功能，极大提高客户设备管理效率，提升三一售后服务能力。



## Hydraulic system 液压系统

Four boom sections extended by double cylinder with rope arranger, 2nd boom extended by cylinder I, 3rd ~5th sections telescoped by cylinder II with rope pull. Synchronized telescoping of variable lengths for more applications with higher efficiency.

5节主臂，双缸绳排，一节油缸和钢丝绳伸2节臂，2节油缸和钢丝绳伸3、4、5节臂，可实现同步伸缩，臂长任意组合，省时省力。



### Superstructure

Open-type electronically controlled load-sensing system and dynamic slewing brake system.

Electro proportional compensated passive luffing-down system applied to control the luffing speed, making luffing more reliable and stable.

Dynamic slewing brake realizing precise control of slewing speed.

Electronically controlled load-sensing hydraulic system, electronic joystick and electronic throttle, ensuring easy operation and more accurate control and millisecond-level action response speed, with min. single-rope hoisting speed 0.8m/min, and distribution difference in case of combined motions 8%.

上车

通过开式电控负载敏感系统和动态回转制动系统；

电比例自重落幅系统控制落幅速度，更可靠更平稳；

具备动态回转制动功能，可实现回转速度精准控制。

电控负载敏感液压系统，采用电手柄、电油门控制，轻松操作的同时，控制更精准；动作响应毫秒级速度；卷扬单绳最低速度0.8m/min；复合动作分配误差8%。



**Chassis**

**Steering system**

A CASAPPA gear pump installed to supply oil for hydraulic steering, steering pressure controlled by electro-proportional relief valve, four steering modes realized by solenoid directional valve.

**Suspension system**

Different modes including normal driving and Pick & Carry with suspension locked, suspension to be locked when the crane is working.

**Outrigger telescoping system**

The electro proportional relief valve identifies pressure staging of outrigger telescoping, satisfying operation requirements under high pressure and forming protection under limited pressure.

下车

转向系统

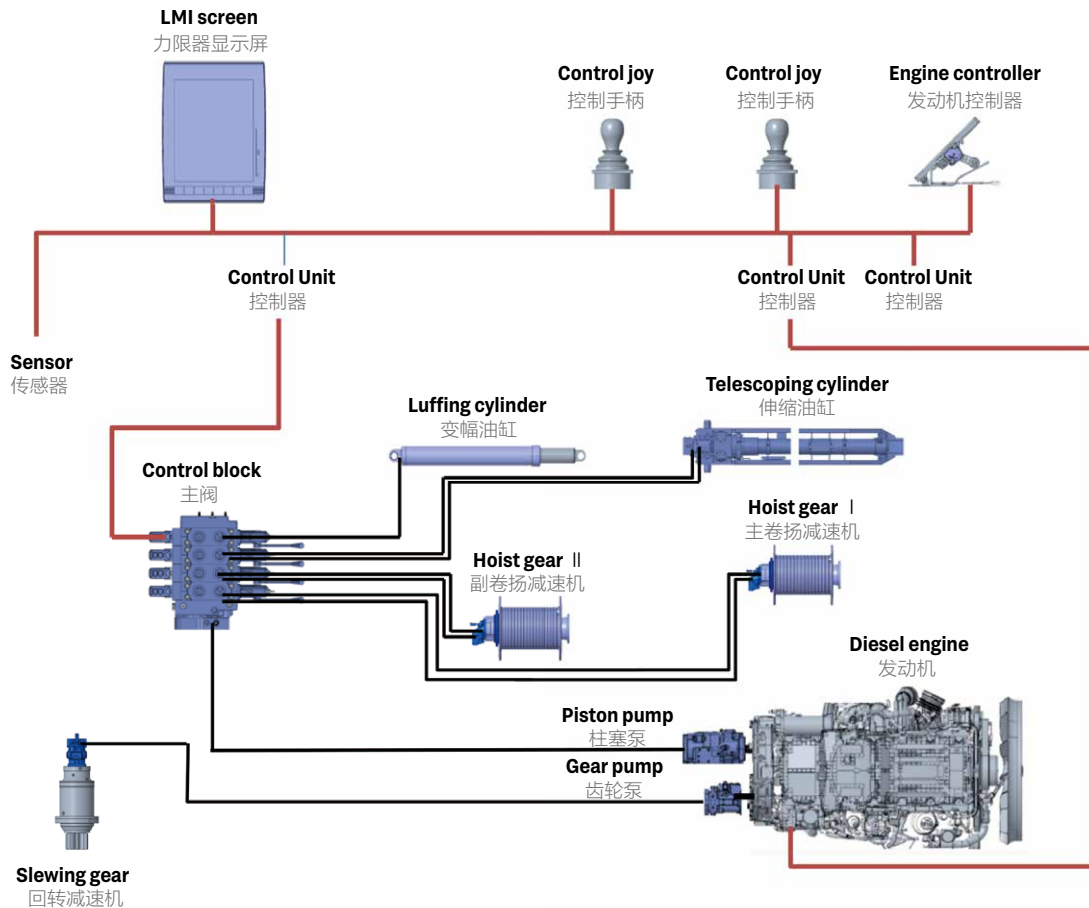
液压转向系统采用卡斯帕齿轮泵提供油源，通过电比例溢流阀精确控制转向压力，通过电磁换向阀实现前轮转向，后轮转向，全轮转向和蟹行转向共计四种转向模式。

悬挂系统

悬挂系统通过选择不同的悬挂模式可以实现正常行驶和锁定模式下的带载行驶；在起重机上车作业时能够对悬挂进行锁定。

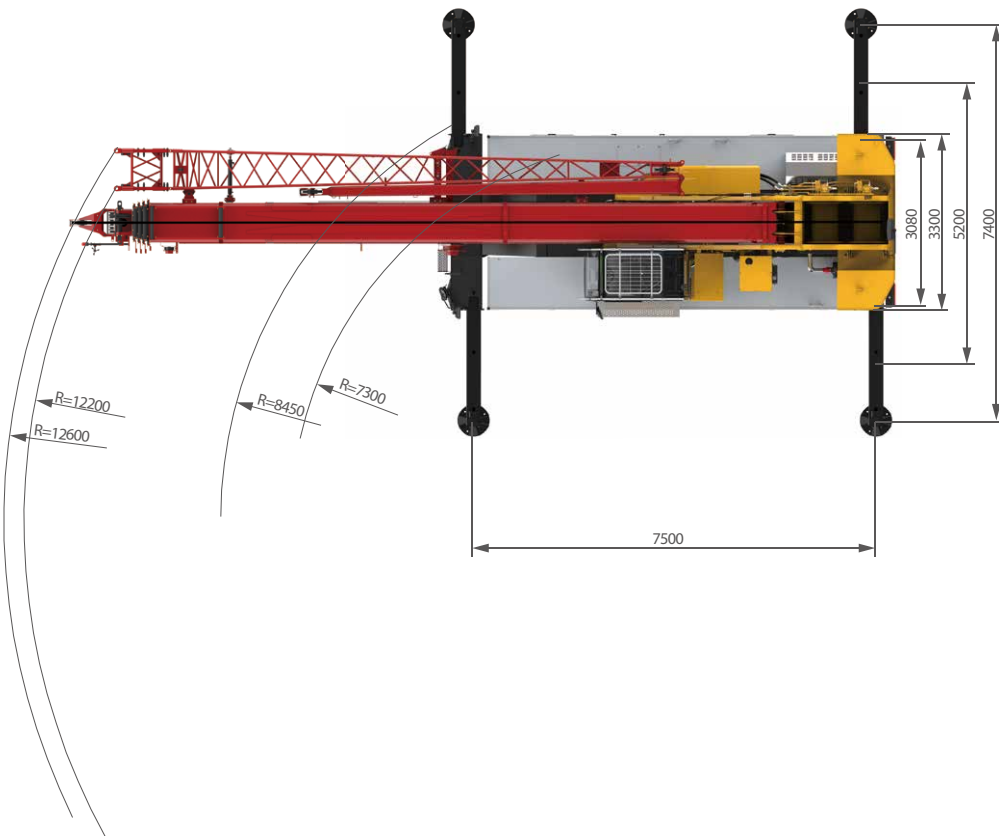
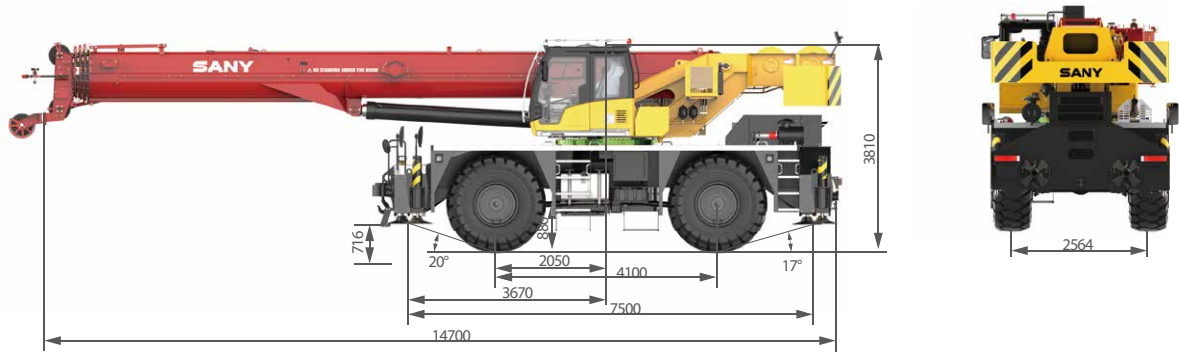
支腿伸缩系统

支腿伸缩采用电比例溢流阀对支腿伸缩进行压力分级，既满足高压动作需求，也可满足限压保护功能。



# Overall Dimensions

## 整机尺寸



# Technical Specification

## 整机参数

CATEGORY 类型	ITEM 项目	UNIT 单位	VALUE 参数	
CAPACITY 额定起重量	Max. lifting capacity 最大起重量	t	75	
WEIGHT 重量参数	Gross weight 整机总质量	kg	48600	
POWER 发动机参数	Engine model 发动机型号 (排放标准)	-	QSB6.7 (Tier III)	
	Max. engine power 发动机最大功率	kW/rpm	194/2400	
	Max. engine torque 发动机最大输出扭矩	N·m/rpm	990/1500	
DIMENSIONS 尺寸参数	Overall length 整机全长	mm	14700	
	Overall width 整机全宽	mm	3300	
	Overall height 整机全高	mm	3810	
TRAVEL 行驶参数	Max.travel speed 最高行驶速度	km/h	36	
	Steering radius 转弯半径	Min.steering radius 最小转弯半径	m	13.9/7.3
		Min.steering radius of boom tip 臂头最小转弯半径	m	12.6
	Wheel formula 车轮模式	-	4×2 / 4×4	
	Min.ground clearance 最小离地间隙	mm	510	
	Approach angle 接近角	°	20	
	Departure angle 离去角	°	17	
	Max.gradeability 最大爬坡度	-	75%	
	Fuel consumption per 100km 每 100 公里油耗	L	115	
	MAIN PERFORMANCE 主要性能参数	Working temperature range 使用温度区间	°C	- 20 ~ + 46
Min.rated lifting radius 最小额定幅度		m	3	
Tail slewing radius 转台尾部回转半径		m	4.4	
Boom sections (Qty.) 臂节数		-	5	
Boom shape 臂形状		-	U shape	
Max.lifting moment 最大起重力矩		Basic boom 基本臂	kN·m	2500
		Full-extension boom 全伸主臂	kN·m	1440
		Full-extension boom+jib 全伸主臂 + 副臂	kN·m	730
Boom length 臂长		Basic boom 基本臂	m	12.2
		Full-extension boom 全伸主臂	m	47.5
		Full-extension boom+jib 全伸主臂 + 副臂	m	65
Max.lifting height 最大起重高度		Basic boom 基本臂	m	15.1
		Full-extension boom 全伸主臂	m	48.5
	Full-extension boom+jib 全伸主臂 + 副臂	m	66.5	
Outrigger span (Longitudinal×Transverse) 支腿跨距 (纵 × 横)	m	7.5 x 7.4		
Jib offset 副臂安装角度	°	0,15,30		
Air conditioner 空调	In operator's cab 上车空调	-	Heating & Cooling 制冷、制热	

# Technical Parameters

## 整机参数



**Axle Load 轴荷**

Axle 轴	1	2	Total weight
Axle load 轴荷 /kg	20880	27740	48600
Remark 备注	Boom angle 45°, with full water and fuel reservoirs, main hook, one driver, without aux. hook. 起重臂角度 45°、满水、满油、主钩吊臂头、不带副钩, 驾驶员 1 人		



**Hook 吊钩**

Load 额载 /t	Number of sheaves 滑轮数量	Rope rate 倍率	Hook weight 吊钩重量 /kg
75t	6	12	720
8t	-	1	160



**Operations 主要动作参数**

Item 项目	Single rope speed 单绳速度	Rope diameter/length 钢丝绳直径 / 长度	Max. single line pull 最大单绳拉力
Main winch 主卷扬	150m/min	20mm/250m	81.3kN
Auxiliary winch 副卷扬	150m/min	20mm/145m	81.3kN
Slewing 回转		1.8r/min	
Luffing 起落幅		60s/80s	
Telescoping 伸缩		120s/135s	
Outrigger jack 垂直支腿	Retract 收	30s	
	Extend 放	35s	
Outrigger beam 水平支腿	Retract 收	25s	
	Extend 放	25s	

# Crane Introduction

## 整机介绍

Carrier



### Carrier frame 车架

- Double longitudinal beam construction welded by high strength steel plate, higher bearing capacity.
- 车架为高强度钢板焊接而成的双纵梁结构，承载能力强。



### Engine 发动机

- Model: DF Cummins QSB6.7 260 inline six-cylinder diesel engine with watercooler and inter cooler.
- Rate power: 194kW/2400rpm.
- Emission standard: Tier III.
- Fuel reservoir capacity: 350L.
- 型号: 东风康明斯 QSB6.7 260 直列六缸、水冷却、增压中冷、柴油发动机。
- 额定功率: 194kw/2400rpm。
- 排放标准: 符合 III 阶段。
- 油箱容积: 350L。



### Transmission 变速箱

- Auto-transmission, 6 forward gears and 6 reverse gears, large speed ratio range, adaptable to slope climbing and high-speed traveling.
- 自动变速箱，变速箱有 6 个前进档、6 个后退档，速比范围大，既可满足低速场地爬坡行驶又可满足高速行驶。



### Axle 车桥

- Two axle chassis of flexible maneuverability, four-wheel drive, excellent dynamic performance.
- 操控灵活，底盘两桥设计，前、后桥驱动，动力性能好。



### Suspension 悬挂

- The front is rigidly mounted, and the rear axle adopts pivot oscillation suspension with hydraulic lockout.
- 前桥刚性连接，后桥带油缸锁定枢轴摆动悬挂。



### Tire 轮胎

- Large diameter off-road 29.5-25 tires deliver large ground clearance and strong off-road agility.
- 大直径越野轮胎，离地间距大，越野性能强，轮胎型号 29.5-25。



### Braking 制动系统

- Dual circuit braking system. When one circuit fails, the other can still work normally, improving the safety and reliability of the braking system.
- 双回路制动系统，当某一回路出现故障时，另一回路仍能正常工作，提高制动系统的安全性和可靠性。



### Hydraulics

- Adopt stable and high-quality main oil pump, enhancing system reliability. Precise parameter matching contributes to superior controllability of the vehicle.
- 采用稳定、高品质的主油泵，系统可靠性高；通过精确的参数匹配，操控性能优越。



### Outrigger 支腿

- H-type telescoping outrigger, 4-point support, with span (longitudinal × transverse) 7.5m×7.4m.
- 采用 H 形伸缩支腿，4 点支撑，纵、横跨距 7.5m×7.4m。



### Control system 控制系统

- CAN-BUS: The bus instrument of integrated intelligent control electrical system can display driving parameters at any time, making driving easier. At the same time, engine failure prompt makes the maintenance and troubleshooting more convenient and faster.
- All-round safety protection, the main and auxiliary hoists are equipped with three-circle indicators and A2B switches to prevent over-hoist-down and over winding of the wire ropes.
- Load moment indicator: It adopts highly intelligent moment indicator system to fully protect lifting operation and ensure accuracy, stability and comfort.
- 总线仪表: 采用集成一体智能控制电气系统的总线仪表，可随时掌控行驾参数，驾乘轻松；同时拥有发动机故障提示功能，维修排故方便、快捷。
- 全方位的安全保护系统，主、副卷扬配置三圈保护器和高度限位器，防止钢丝绳过放和过卷，防倾翻保护，极限角度保护。
- 力 limiter: 采用高度智能力矩限制器系统，全方位保护吊载作业，确保操作精准、平稳、舒适。

### Operator's cab 操纵室

- New generation T-series operator's cab features curved-rail sliding door, safety glass and corrosion resistant steel construction with softened interior trim. Large internal space with panoramic skylight, adjustable seat and other user-friendly design incl. A/C, electric wiper, making it more comfortable and easier to work. The LMI screen is equipped to realize the logic integration of the control console and the display, so that all working data can be seen at a glance.
- 全新一代 T 系列操纵室，带变轨滑移门，配备安全玻璃，耐腐蚀钢板，配置软化内饰、超大内部空间、可调式座椅等人性化设计，配有空调、电动雨刮器，操作更舒适、轻松；配置力矩限制器显示屏，实现主控台与操作显示系统有机结合，使吊装作业的全部工况数据一目了然。

### Boom system 臂架系统

- Boom: Five-section, basic boom 12.2m, full-extension 47.5m, made of high-strength welded structural steel with U-shape cross-section.
- Jib: Two-section, 10.2m / 17.5m, offset at 0°, 15°, 30°.
- 主臂：五节臂，基本臂 12.2m，全伸臂 47.5m，由高强度焊接结构钢制成，U 形截面。
- 副臂：两节副臂，分别为 10.2m 和 17.5m，安装角度为 0° 15° 30°。

### Slewing platform 转台结构

- SANY independently developed, made of fine grain high strength steel in optimized structure.
- 三一自主设计，结构更优化，由细晶粒高强度钢制成。

### Hydraulics 液压系统

- Load sensing variable piston pump can adjust displacement in real time to achieve high precision flow control, greatly reducing energy loss.
- Winch adopts electronically controlled variable motor with high operation efficiency. Max. single rope speed of main and auxiliary winch is 150m/min.
- Slewing system integrating slewing buffer and free swing technology, start & brake process is smoother and the inching motion performance is ever better.
- 采用负载敏感变量柱塞泵，能实时调节油泵排量，实现高精度的流量控制，极大的降低能量损耗。
- 卷扬采用电控变量马达，作业效率高；主、副卷扬单绳速度最大达 150m/min。
- 回转系统带集成回转缓冲阀，具有自由滑转功能，回转启动和控制平稳，微动性卓越。

### Hoist 起升机构

- Pump and motor double variable speed regulation, highly efficient and energy saving. Balance valve and unique anti-hook-slip technology are perfectly coupled to achieve smooth rise and fall of the load. Non-rotation high strength wire rope is used.
- 泵、马达双变量调速，高效节能。卷扬平衡阀与独特的防溜钩技术完美结合，重物起落平稳。配备防旋转高强度钢丝绳。

### Luffing 变幅机构

- Double acting single rod hydraulic cylinder with balance valve, luffing angle: -2° ~ 80°. Passive luffing down, reducing energy consumption, improving luffing stability.
- 双作用单活塞杆液压缸，带安全平衡阀，变幅角度：-2° ~ 80°，采用自重落幅系统，降低能耗，提高落幅操作的平稳性。

### Slewing 回转机构

- 360° slewing in both directions, max. speed 1.8r/min. It adopts electro proportional speed control for stable movement and system reliability. The unique slewing balance design makes the braking smoother.
- 360° 转动，最大回转速度 1.8r/min。液控比例调速控制，动作稳定，系统可靠。独特的回转缓冲设计，制动更平稳。

### Safety equipment 安全装置

- Load moment indicator: Analytical mechanics is applied and moment limiter calculation system based on the hoisting mechanics model is established. Through online empty-load calibration, the rated accuracy can reach 0~10% to fully protect the hoisting operation. In case of overload, the system will automatically give an alarm to guarantee safety operation.
- The hydraulic system includes balance valve, relief valve, two-way holding valve, etc. to realize system stability and reliability.
- The main and auxiliary winches are equipped with third-wrap indicators to prevent over-hoist-down of the wire rope.
- Boom head and jib head are equipped with A2B switches to prevent the wire rope from over winding.
- The length & angle sensor and pressure sensor are equipped to signify working status in real time, automatically stopping hazardous actions with buzzer alarm.
- 力矩限制器：采用分析力学方法，建立了基于吊重力学模型的力矩限制器计算系统，通过在线空载标定，额定吊重精度达到 0~10%，全方位保护吊载作业；超载作业时，系统自动报警提示，为操纵作业提供安全保障。
- 液压系统配置平衡阀、溢流阀、双向液压锁等元件，实现液压系统稳定可靠。
- 主、副卷扬配置三圈保护器，防止钢丝绳过放。
- 主、副臂臂端配置高度限位器，防止钢丝绳过卷。
- 配置长度角度传感器、压力传感器，实时显示起重机作业状态，自动切断危险动作，蜂鸣报警。

### Counterweight 配重

- Fixed block 7.6t.
- 固定配重 7.6t。

### Optional equipment at extra fees 选配

- Slewing buzzer / Navigation beacon & anemometer package / Front towing device / Reversing image / Winch camera / Boom tip camera / Spark arrester / Air intake shutoff valve / Inflator/other equipment available upon request.
- 回转蜂鸣器 / 航标灯与风速仪集成 / 前拖钩 / 倒车影像 / 卷扬摄像头 / 臂尖摄像头 / 火星灭火器 / 发动机进气关断阀 / 打气泵 / 其他选配视需求定。

# Working Conditions

工况组合



Telescopic boom on outriggers

主臂、支腿吊载

Fixed jib on outriggers

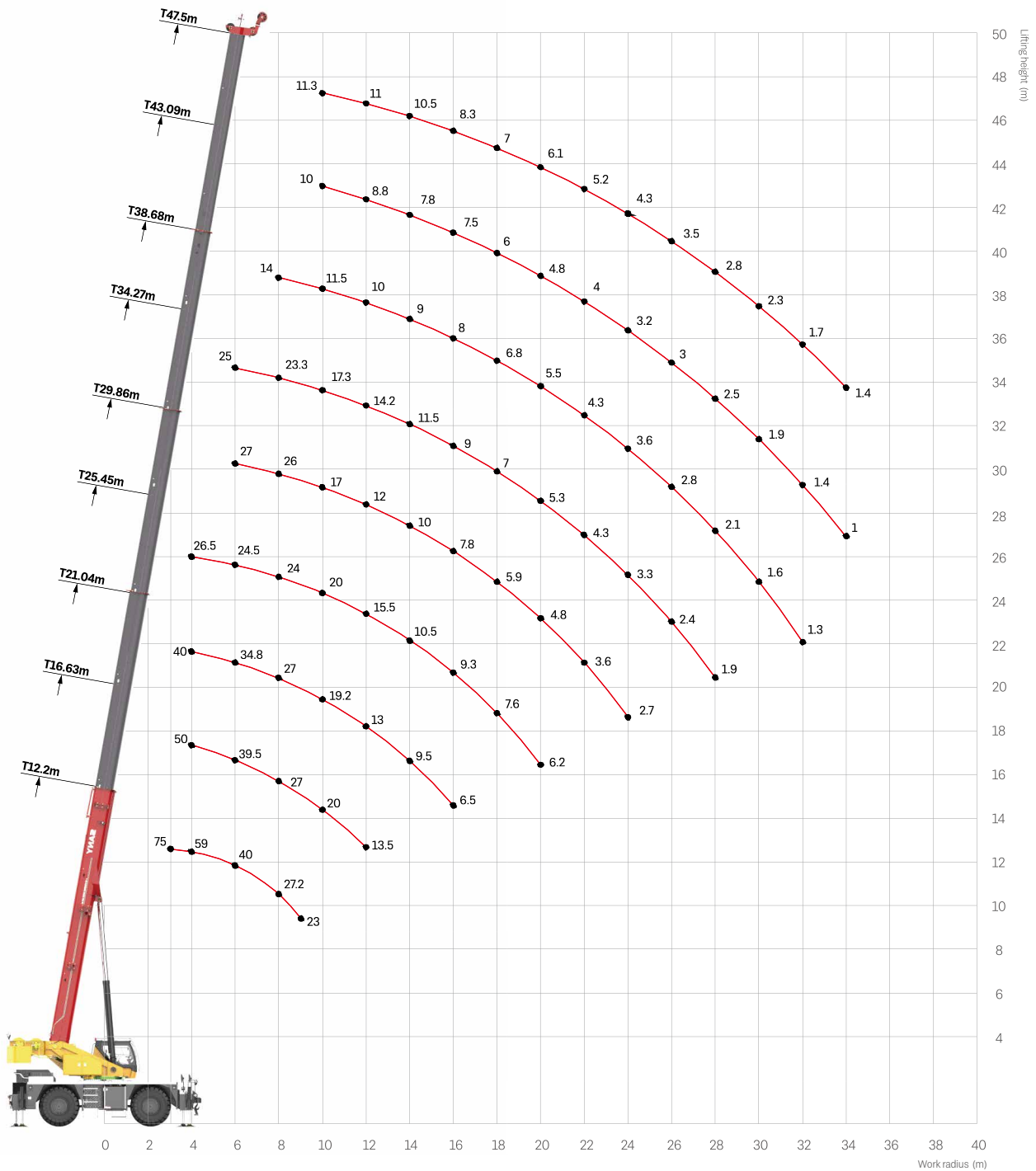
固定副臂、支腿吊载

Telescopic boom on tires

主臂、轮胎吊载

# Operating Range - Telescopic Boom

## 起升高度曲线 - 主臂





# Load Chart-Telescopic Boom

## 性能表 - 主臂



Unit: kg

Radius (m) 幅度	12.2	16.6	16.6	21.0	21.0	21.0	25.5	25.5	25.5	29.9	29.9	Radius (m) 幅度
3.0	75000	50000	30000	40000	25000	27000						3.0
3.5	70000	50000	30000	40000	25000	27000	26500	22000	28500			3.5
4.0	59000	50000	30000	40000	25000	26800	26500	22000	28500	27000	27000	4.0
4.5	53000	48000	30000	38000	25000	26800	26500	22000	28500	27000	27000	4.5
5.0	51100	45000	29500	37000	25000	26500	26500	22000	28500	27000	27000	5.0
5.5	44000	42000	29000	36000	24000	26500	26500	22000	28500	27000	27000	5.5
6.0	40000	39500	28500	34800	24000	26500	24500	21500	28500	27000	26100	6.0
6.5	37000	36000	28000	32200	23000	26300	23500	21000	28200	27000	25600	6.5
7.0	34600	33000	27000	30000	23000	26000	22000	20000	28000	27000	25200	7.0
7.5	31200	31000	26000	28500	23000	25500	25000	19000	27500	26500	24800	7.5
8.0	27200	27000	25000	27000	23000	24500	24000	18000	27000	26000	24500	8.0
8.5	25000	25000	24500	25500	22500	23800	23400	17000	25000	23000	23500	8.5
9.0	23000	24000	24000	24000	22000	23000	22000	16000	22000	21000	22500	9.0
10.0		20000	19000	19200	19000	20000	20000	15000	18500	17000	19100	10.0
12.0		13500	13000	13000	14000	15000	15500	12000	13500	12000	14700	12.0
14.0				9500	9000	11000	10500	10000	11000	10000	11000	14.0
16.0				6500	7000	8000	9300	8000	7500	7800	8700	16.0
18.0							7600	6500	5500	5900	6900	18.0
20.0							6200	5450	4200	4800	5600	20.0
22.0										3600	4400	22.0
24.0										2700	3500	24.0
26.0												26.0
28.0												28.0
30.0												30.0
32.0												32.0
34.0												34.0
36.0												36.0
<b>Telescoping status 伸缩模式</b>												
2nd boom 二节臂	0%	50%	0%	100%	50%	0%	0%	50%	100%	100%	50%	2nd boom 二节臂
3rd boom 三节臂	0%	0%	17%	0%	17%	33%	50%	33%	17%	33%	50%	3rd boom 三节臂
4th boom 四节臂	0%	0%	17%	0%	17%	33%	50%	33%	17%	33%	50%	4th boom 四节臂
5th boom 五节臂	0%	0%	17%	0%	17%	33%	50%	33%	17%	33%	50%	5th boom 五节臂
Rope rate 倍率	12	10	8	8	8	8	6	6	6	6	6	Rope rate 倍率
Load at 0°angle 0°吊载	8000	4500	5000	2000	2500	3500	2000	2000	1300	1000	1200	Load at 0°angle 0°吊载

# Load Chart-Telescopic Boom

## 性能表 - 主臂



Unit: kg

Radius (m) 幅度	29.9	34.3	34.3	34.3	38.7	38.7	38.7	43.1	43.1	47.5	Radius (m) 幅度
3											3
3.5											3.5
4	20000										4
4.5	19500										4.5
5	19000	25000	18000	17000							5
5.5	18500	25000	18000	17000	15500	15000	13500				5.5
6	17500	25000	18000	17000	14500	14000	13500				6
6.5	17500	25000	18000	17000	14500	13000	13500	12500	11700		6.5
7	17500	24500	18000	17000	14500	12500	13200	12000	11700	11300	7
7.5	17500	24000	18000	17000	14500	12000	13200	11500	11700	11300	7.5
8	17500	23300	17400	16500	14000	11500	12800	11000	11700	11300	8
8.5	17000	22500	17000	15800	13000	11250	12700	10750	11700	11300	8.5
9	16500	22200	16300	15000	12500	11000	12600	10500	11700	11300	9
10	14800	17300	15500	13800	11500	10000	12000	10000	11500	11300	10
12	12000	14200	13500	11500	10000	10000	11000	8800	10800	11000	12
14	10500	11500	11000	11200	9000	9300	10000	7800	10100	10500	14
16	9000	9000	8800	8800	8000	8200	9500	7500	8800	8300	16
18	7900	7000	7500	7500	6800	7000	8500	6000	7400	7000	18
20	6200	5300	6000	6500	5500	5800	7000	4800	6300	6100	20
22	5400	4300	4900	5500	4300	5000	6200	4000	5500	5200	22
24	4400	3300	4000	4600	3600	4200	4800	3200	4500	4300	24
26		2400	3200	3800	2800	3500	4100	3000	3800	3500	26
28		1900	2500	3200	2100	2700	3400	2500	3100	2800	28
30					1600	2200	2900	1900	2500	2300	30
32					1300	1800	2450	1400	2100	1700	32
34								1000	1700	1400	34
36									1300		36
<b>Telescoping status 伸缩模式</b>											
2nd boom 二节臂	0%	100%	50%	0%	100%	50%	0%	100%	50%	100%	2nd boom 二节臂
3rd boom 三节臂	66%	50%	66%	84%	66%	84%	100%	84%	100%	100%	3rd boom 三节臂
4th boom 四节臂	66%	50%	66%	84%	66%	84%	100%	84%	100%	100%	4th boom 四节臂
5th boom 五节臂	66%	50%	66%	84%	66%	84%	100%	84%	100%	100%	5th boom 五节臂
Rope rate 倍率	6	4	4	4	4	4	4	4	4	3	Rope rate 倍率
Load at 0°angle 0°吊载	1500	500	800	600	500	500	500	500	500	0	Load at 0°angle 0°吊载

# Load Chart-Telescopic Boom

## 性能表 - 主臂



Unit: kg

Radius (m) 幅度	12.2	16.6	16.6	21.0	21.0	21.0	25.5	25.5	25.5	29.9	29.9	Radius (m) 幅度
3.0	65000	50000	30000	35000	25000	26000						3.0
3.5	54000	48000	30000	35000	25000	26000	25000	20000	26000			3.5
4.0	52000	47000	30000	35000	25000	26000	25000	20000	26000	26000	27000	4.0
4.5	45000	46000	30000	35000	25000	26000	25000	20000	26000	26000	27000	4.5
5.0	36100	37000	30000	30500	25000	26000	25000	20000	26000	26000	27000	5.0
5.5	31000	30000	30000	28900	25000	25000	25000	20000	26000	26000	27000	5.5
6.0	28000	28000	27500	27200	25000	25000	25000	20000	20000	25000	26000	6.0
6.5	22000	21500	23500	24200	22000	24000	24000	20000	17000	22000	23500	6.5
7.0	21000	20000	21000	21000	20000	19000	22500	20000	14500	18300	20000	7.0
7.5	16500	16000	18500	17700	17000	21000	20000	17000	13000	16800	19000	7.5
8.0	15500	15500	16800	15600	15000	18000	19000	15000	12000	14000	18200	8.0
8.5	12000	13500	13500	13000	13500	15500	16000	13500	10000	13500	15000	8.5
9.0		12000	12500	11500	12000	14500	15500	12000	9500	11500	14700	9.0
10.0		9500	11000	9400	9500	11000	12700	10000	8500	10000	12000	10.0
12.0		6200	7500	6200	7000	8000	9000	7500	6500	7500	8500	12.0
14.0				4200	5200	6000	6800	6000	4500	5300	6800	14.0
16.0				2200	3500	4500	5200	4500	3500	4200	4800	16.0
18.0							4100	3000	2200	2800	3800	18.0
20.0							3200	2000	1400	1800	2800	20.0
22.0										1300	1800	22.0
24.0											1300	24.0
26.0												26.0
28.0												28.0
<b>Telescoping status 伸缩模式</b>												
2nd boom 二节臂	0%	50%	0%	100%	50%	0%	0%	50%	100%	100%	50%	2nd boom 二节臂
3rd boom 三节臂	0%	0%	17%	0%	17%	33%	50%	33%	17%	33%	50%	3rd boom 三节臂
4th boom 四节臂	0%	0%	17%	0%	17%	33%	50%	33%	17%	33%	50%	4th boom 四节臂
5th boom 五节臂	0%	0%	17%	0%	17%	33%	50%	33%	17%	33%	50%	5th boom 五节臂
Rope rate 倍率	12	10	8	8	8	8	6	6	6	6	6	Rope rate 倍率
Load at 0°angle 0°吊载	6000	3000	2500	-	-	-	-	-	-	-	-	Load at 0°angle 0°吊载

# Load Chart-Telescopic Boom

## 性能表 - 主臂



Unit: kg

Radius (m) 幅度	29.9	34.3	34.3	34.3	38.7	38.7	38.7	43.1	43.1	47.5	Radius (m) 幅度
3.0											3.0
3.5											3.5
4.0	24500										4.0
4.5	24500										4.5
5.0	24500	23200	17000	16000							5.0
5.5	24500	23200	17000	16000	14000	14500	12500				5.5
6.0	20000	23200	17000	16000	14000	14500	12500	12000	12000		6.0
6.5	19500	22000	17000	16000	14000	14500	12500	12000	12000		6.5
7.0	19000	21500	17000	16000	14000	14500	12500	12000	12000	10500	7.0
7.5	18000	18500	17000	16000	14000	11200	12500	12000	12000	10500	7.5
8.0	17500	17500	15800	15000	13000	10900	12500	11500	12000	10500	8.0
8.5	15500	14600	13800	12000	12500	10500	12500	10550	11500	10500	8.5
9.0	14500	14200	12500	11500	11800	10200	12500	9600	11500	10500	9.0
10.0	11500	11500	10000	11000	9500	9500	12000	8200	10000	10500	10.0
12.0	8500	8000	8000	8800	7500	8600	9300	6500	8200	9000	12.0
14.0	7000	5700	6000	6500	6000	7100	7500	5000	6300	6700	14.0
16.0	5800	4300	5000	5500	4500	5500	6000	3800	4900	5100	16.0
18.0	4800	3400	4000	4500	3600	4400	4800	3600	3900	3900	18.0
20.0	3800	2400	3000	3500	2600	3500	3900	2200	3000	3000	20.0
22.0	2800	1700	2400	3000	2000	2800	3200	1600	2300	2400	22.0
24.0	2100	1200	1700	2400	1400	2000	2600	1100	1800	1800	24.0
26.0			1200	1800	900	1600	1900		1300	1300	26.0
28.0				1300		1100	1600		1000	800	28.0
<b>Telescoping status 伸缩模式</b>											
2nd boom 二节臂	0%	100%	50%	0%	100%	50%	0%	100%	50%	100%	2nd boom 二节臂
3rd boom 三节臂	66%	50%	66%	84%	66%	84%	100%	84%	100%	100%	3rd boom 三节臂
4th boom 四节臂	66%	50%	66%	84%	66%	84%	100%	84%	100%	100%	4th boom 四节臂
5th boom 五节臂	66%	50%	66%	84%	66%	84%	100%	84%	100%	100%	5th boom 五节臂
Rope rate 倍率	6	4	4	4	4	4	4	4	4	3	Rope rate 倍率
Load at 0°angle 0°吊载	/	/	/	/	/	/	/	/	/	/	Load at 0°angle 0°吊载

# Load Chart-Telescopic Boom

## 性能表 - 主臂



Unit: kg

Radius (m) 幅度	12.2	16.6	16.6	21.0	21.0	21.0	25.5	25.5	25.5	29.9	29.9	Radius (m) 幅度
3.0	45000	38000	25000									3.0
3.5	32000	32000	25000	24000	23500	22000						3.5
4.0	26000	27300	22500	23000	21000	20500	20000	20000	20000			4.0
4.5	21000	21500	18500	21100	17500	19400	18800	17200	19500	17200	17000	4.5
5.0	17000	17000	15300	16600	15000	18600	17000	14800	18800	17200	16500	5.0
5.5	14000	14400	13200	14100	13000	16500	14800	12800	16700	15300	14000	5.5
6.0	13000	12200	11400	11900	11000	14200	12600	11000	14400	13000	12000	6.0
6.5	12000	10000	10000	10000	9400	11900	10400	9600	12100	10800	10500	6.5
7.0	10000	9500	8700	9800	8200	10500	9800	8500	10700	9400	10200	7.0
7.5	9200	8000	7700	8200	7000	9300	9200	7300	9500	8300	9800	7.5
8.0	8000	7500	6800	7500	6200	8100	8800	6400	8300	7100	9200	8.0
8.5	7000	6500	5800	6000	5200	7300	8300	5800	7500	6300	8000	8.5
9.0	6300	5900	5150	5500	4600	6300	7900	5000	6500	5300	7400	9.0
10.0		4300	4500	4500	4000	5800	6700	4500	5400	4900	5900	10.0
12.0		2500	3400	2300	3500	4700	4700	3600	3100	3800	4200	12.0
14.0		1100	2400	950	2100	3100	3200	2500	1700	2200	2900	14.0
16.0					1100	2100	2300	1400		1200	1700	16.0
18.0							1600				1200	18.0
20.0							1100					20.0
22.0												22.0
Telescoping status 伸缩模式												
2nd boom 二节臂	0%	50%	0%	100%	50%	0%	0%	50%	100%	100%	50%	2nd boom 二节臂
3rd boom 三节臂	0%	0%	17%	0%	17%	33%	50%	33%	17%	33%	50%	3rd boom 三节臂
4th boom 四节臂	0%	0%	17%	0%	17%	33%	50%	33%	17%	33%	50%	4th boom 四节臂
5th boom 五节臂	0%	0%	17%	0%	17%	33%	50%	33%	17%	33%	50%	5th boom 五节臂
Rope rate 倍率	12	10	8	8	8	8	6	6	6	6	6	Rope rate 倍率
Load at 0°angle 0°吊载	3000	-	-	-	-	-	-	-	-	-	-	Load at 0°angle 0°吊载

# Load Chart-Telescopic Boom

## 性能表 - 主臂



Unit: kg

Radius (m) 幅度	29.9	34.3	34.3	34.3	38.7	38.7	38.7	43.1	43.1	47.5	Radius (m) 幅度
3.0											3.0
3.5											3.5
4.0											4.0
4.5	17500										4.5
5.0	17000	14000	14500	15000							5.0
5.5	15500	12000	12500	13000							5.5
6.0	13900	10800	10800	11900	10500	10800	11000				6.0
6.5	12200	10600	9600	11900	9200	9500	9800	9000	10000		6.5
7.0	10900	10600	8600	11000	8200	8600	9000	8200	9500		7.0
7.5	9700	9000	7600	9800	7300	7600	8400	7400	8500	8000	7.5
8.0	8500	8500	6700	8600	7300	6700	8400	6500	8000	8000	8.0
8.5	7700	7200	5700	7700	6800	5600	7800	5600	7400	8000	8.5
9.0	7000	6800	5100	7000	5800	5000	7000	5050	6500	7800	9.0
10.0	6200	5300	4500	6300	5300	4400	6400	4500	5900	6600	10.0
12.0	5200	3900	3500	4400	4300	3400	5300	3300	4900	4800	12.0
14.0	3600	2400	2300	3700	2800	2400	3900	2300	3300	3400	14.0
16.0	2500	1600	1600	2600	1700	1600	3100	1600	2500	2300	16.0
18.0	1700		1300	1800	1000	1100	2200	1100	1600	1500	18.0
20.0	1300			1400		1000	1600		1200	1000	20.0
22.0							1100				22.0
Telescoping status 伸缩模式											
2nd boom 二节臂	0%	100%	50%	0%	100%	50%	0%	100%	50%	100%	2nd boom 二节臂
3rd boom 三节臂	66%	50%	66%	84%	66%	84%	100%	84%	100%	100%	3rd boom 三节臂
4th boom 四节臂	66%	50%	66%	84%	66%	84%	100%	84%	100%	100%	4th boom 四节臂
5th boom 五节臂	66%	50%	66%	84%	66%	84%	100%	84%	100%	100%	5th boom 五节臂
Rope rate 倍率	6	4	4	4	4	4	4	4	4	3	Rope rate 倍率
Load at 0°angle 0°吊载	-	-	-	-	-	-	-	-	-	-	Load at 0°angle 0°吊载

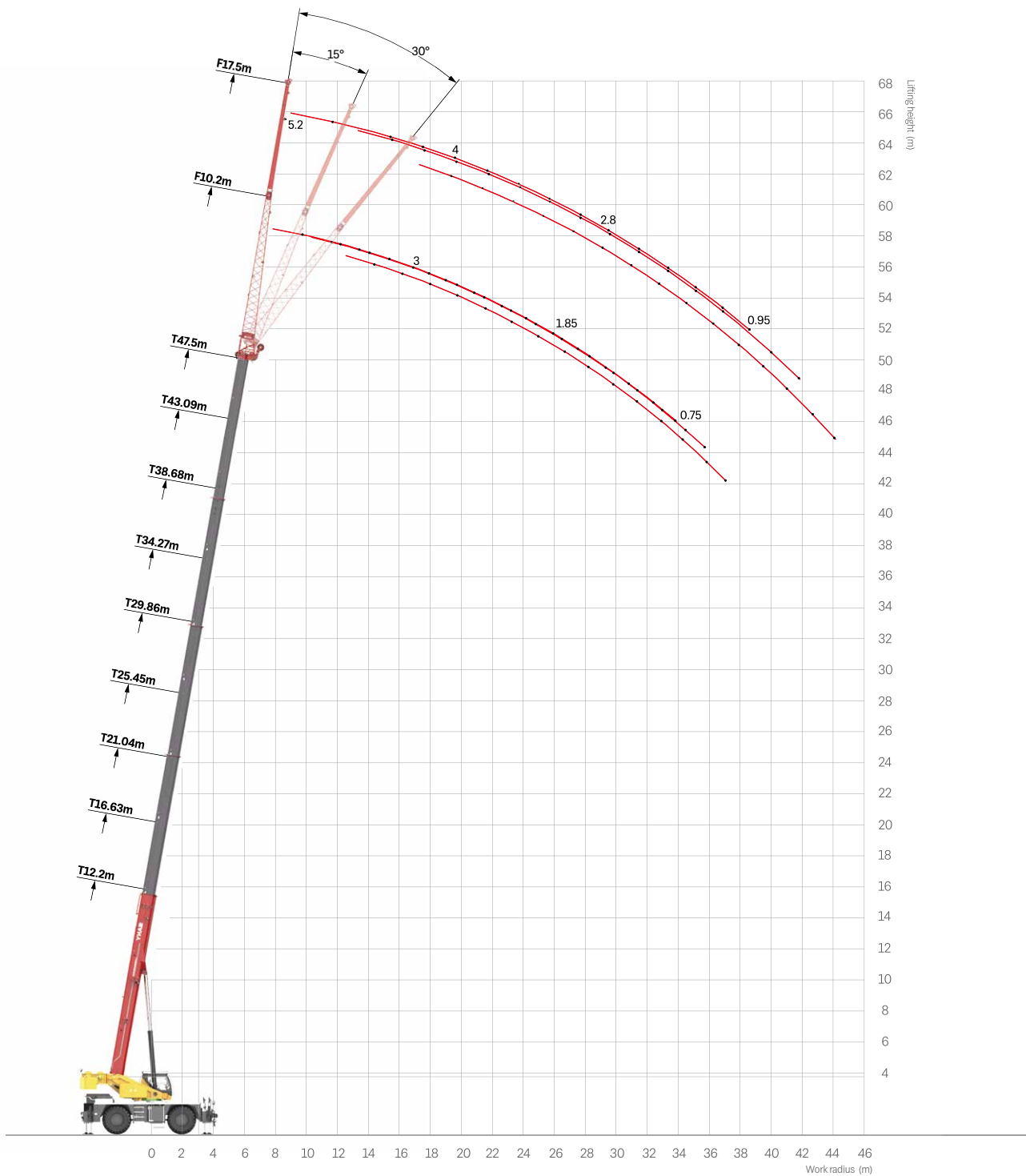
**Remark**

1. Load capacity in the chart is the maximum weight which this crane could hoist include the hook blocks' weight. The main hook weighs 720kg, the aux. hook weighs 160kg.
2. Radius shown in the chart is the actual radius when loading.
3. The load capacity in the chart is the maximum weight when this crane is supported with the firm ground and stays in level.
4. Choose rated load capacity of the longer boom and radius when the actual boom length and radius are between two values in the charts.
5. The machine can be used only when the wind power is less than grade 6.

1. 性能表中额定起重量包括起重钩(主钩重720kg, 副钩重160kg)和吊具的重量。
2. 性能表中工作幅度是指吊载后的实际幅度。
3. 性能表中给定数值是在平整坚固的地面上, 整机调平状态下起重机的最大起重量。
4. 如实际臂长和幅度介于两个数值之间时, 取较长的臂长及较大的幅度所决定的额定起重量进行起重作业。
5. 起重作业风力等级需低于6级。

# Operating Range - Fixed Jib

起升高度曲线 - 副臂



# Load Chart - Fixed Jib

## 性能表 - 副臂



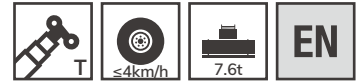
Unit: kg

Boom angle (0°) 主臂角度	47.5+10.2						47.5+17.5						Boom angle (0°) 主臂角度
	0°		15°		30°		0°		20°		40°		
	Radius (m) 幅度	Load (kg) 吊载	Radius (m) 幅度	Load (kg) 吊载	Radius (m) 幅度	Load (kg) 吊载	Radius (m) 幅度	Load (kg) 吊载	Radius (m) 幅度	Load (kg) 吊载	Radius (m) 幅度	Load (kg) 吊载	
80	7.8	5200	10.4	3800	12.6	3300	9.1	3100	13.4	2200	17.3	1500	80
78	9.8	5200	12.3	3700	14.5	3100	11.3	3100	15.6	2100	19.4	1400	78
76	11.8	5000	14.2	3600	16.4	2900	13.5	3100	17.8	2000	21.4	1400	76
74	13.7	4800	16.1	3500	18.2	2700	15.7	3000	19.9	2000	23.5	1400	74
72	15.6	4300	18.0	3300	20.1	2700	17.9	3000	22.0	1900	25.5	1300	72
70	17.5	4000	19.9	3100	21.9	2600	20.0	3000	24.1	1700	27.5	1300	70
68	19.4	3800	21.7	3000	23.6	2500	22.1	3000	26.1	1600	29.4	1300	68
66	21.3	3500	23.5	2900	25.4	2400	24.2	3000	28.1	1500	31.3	1200	66
64	23.1	3200	25.3	2700	27.1	2300	26.3	2750	30.1	1500	33.1	1200	64
62	24.9	3000	27.1	2500	28.7	2200	28.3	2300	32.0	1500	34.9	1100	62
60	26.7	2800	28.8	2300	30.4	2000	30.3	1850	33.9	1400	36.7	1050	60
58	28.4	2300	30.4	2100	32.0	1800	32.2	1600	35.8	1400	38.4	1000	58
56	30.1	1900	32.1	1700	33.5	1700	34.1	1400	37.6	1100	40.1	950	56
54	31.7	1400	33.6	1300	35.0	1200	36.0	1100	39.3	1000	41.7	900	54
52	33.3	1100	35.2	1000	36.5	950	37.8	1000	41.0	850	43.3	800	52
50	34.9	950	36.7	850	37.9	850	39.6	750	42.7	700	44.8	700	50
Min.boom angle 最小仰角	50°												Min.boom angle 最小仰角



# Load Chart-Telescopic Boom, Pick & Carry, Load Over Front

## 性能表 - 主臂带载行驶（正前方）



Unit: kg

Radius (m) 幅度	12.2	16.6	21.0	25.5	29.9	Radius (m) 幅度
3.0	19600					3.0
3.5	17400	14100				3.5
4.0	14500	14100				4.0
4.5	13000	12650				4.5
5.0	12000	11400	12500			5.0
5.5	11000	10300	12500	10000		5.5
6.0	9500	9350	12500	9000		6.0
6.5	8500	8400	11500	9000	9000	6.5
7.0	7800	7500	10400	7500	8800	7.0
7.5	7000	6600	9400	7500	8600	7.5
8.0	6500	5800	8400	7000	7800	8.0
8.5	5500	5400	7500	6200	7200	8.5
9.0	4500	5000	6800	5500	6800	9.0
10.0		4000	5600	4500	6500	10.0
11.0			4600	3800	5500	11.0
12.0			3900	2500	4500	12.0
14.0			2700	1500	3200	14.0
16.0			2000	1800	2200	16.0
18.0			1100	1000	1600	18.0
20.0					1100	20.0
<b>Telescoping status 伸缩模式</b>						
Cylinder I I号油缸	0%	0%	0%	0%	0%	Cylinder I I号油缸
Cylinder II II号油缸	0%	17%	33%	50%	67%	Cylinder II II号油缸
Rope rate 倍率	6	6	6	6	6	Rope rate 倍率

# Load Chart - Telescopic Boom, On Tires Stationary, Load Over Front

## 性能表 - 轮胎静止吊载 (正前方)

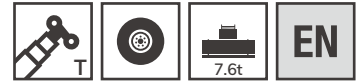


Unit: kg

Radius (m) 幅度	12.2	16.6	21.0	25.5	29.9	Radius (m) 幅度
3.0	25000					3.0
3.5	25000					3.5
4.0	23800	16000				4.0
4.5	21500	15000				4.5
5.0	19100	13000				5.0
5.5	16400	11000				5.5
6.0	14200	10000	13500	10000		6.0
6.5	12200	9000	12100	9000		6.5
7.0	10500	7900	10900	8000	9500	7.0
7.5	9100	6900	9900	7200	9100	7.5
8.0	7900	6000	9000	6500	8300	8.0
8.5	6900	5000	8200	6000	7600	8.5
9.0	6000	4500	7500	5000	7000	9.0
10.0		3500	6300	4000	6500	10.0
11.0			5200	3300	5500	11.0
12.0			4400	2800	4800	12.0
14.0			3100	1800	3600	14.0
16.0			2100	1500	2500	16.0
18.0			1400	1200	1800	18.0
20.0					1300	20.0
Telescoping status 伸缩模式						
Cylinder I I号油缸	0%	0%	0%	0%	0%	Cylinder I I号油缸
Cylinder II II号油缸	0%	17%	33%	50%	67%	Cylinder II II号油缸
Rope rate 倍率	6	6	6	6	6	Rope rate 倍率

# Load Chart - Telescopic Boom, On Tires Stationary, 360° Slewing

## 性能表 - 轮胎静止吊载 (360°)



Unit: kg

Radius (m) 幅度	12.2	16.6	21.0	25.5	29.9	Radius (m) 幅度
3.0	15000					3.0
3.5	12000	10500				3.5
4.0	9500	10000				4.0
4.5	9000	8000	8000	6500	5500	4.5
5.0	8500	6500	7500	5700	5500	5.0
5.5	7000	6300	6000	5000	5500	5.5
6.0	6500	4600	5500	4000	5500	6.0
6.5	5800	4000	5200	3000	4500	6.5
7.0	5000	3300	4500	2500	4300	7.0
7.5	4500	2800	3500	2200	3800	7.5
8.0	3500	1800	2000	1800	3400	8.0
8.5	2300	1200	3000	1600	3000	8.5
9.0	1500	1100	2500	1400	2700	9.0
10.0		1000	2000	1200	2200	10.0
11.0			1400	1000	1600	11.0
12.0					1200	12.0
Telescoping status 伸缩模式						
Cylinder I I号油缸	0%	0%	0%	0%	0%	Cylinder I I号油缸
Cylinder II II号油缸	0%	17%	33%	50%	67%	Cylinder II II号油缸
Rope rate 倍率	6	6	6	6	6	Rope rate 倍率

**Remark**

1. Capacities are applicable at 425kPa cold tire inflation pressure.
2. Capacities are applicable only with machine on firm level surface.
3. On tire lifting with the jib mounted is not permitted.
4. Axle lockouts must be applied when lifting on tires.
5. Parking brake must be applied when lifting on tires stationary.
6. Driving speed shall be ≤4km/h at pick & carry mode.

1. 冷态轮胎气压需保持425kPa。
2. 起重机需在平整坚固的地面上作业。
3. 轮胎吊载工况不允许使用副臂吊载。
4. 轮胎吊载工况中，车桥悬挂需锁定。
5. 轮胎静止吊载工况中，需使用驻车制动。
6. 带载行驶工况中，直线行驶速度需小于等于4km/h。



## SANY GROUP CRANE BU

SANY Mobile Crane Industrial Park, No.168 Jinzhou Avenue, Jinzhou Development Zone, Changsha City,  
Hunan Province, P.R. China Zip 410600  
Consulting [sanycrane@sanygroup.com](mailto:sanycrane@sanygroup.com) (Crane BU) / [crd@sany.com.cn](mailto:crd@sany.com.cn) (IHQ)  
After-sales Service 0086-400 6098 318

Reminder:

Any change in the technical parameters and configuration due to product modification or upgrade may occur without prior notice. The machine in the picture may include additional equipment. This brochure is for reference only, and goods in kind shall prevail.

Copyright at SANY. No part of this brochure may be copied or used for any purpose without written approval from SANY.

© Edited in February 2022

### 三一集团起重事业部

中国湖南长沙金洲开发区金洲大道 168 号 三一汽车起重机产业园 邮编: 410600  
咨询: [sanycrane@sanygroup.com](mailto:sanycrane@sanygroup.com) (起重事业部) / [crd@sany.com.cn](mailto:crd@sany.com.cn) (国际总部)  
海外售后服务: 0086-400 6098 318

温馨提示:

由于技术不断更新, 技术参数及配置如有更改, 恕不另行通知。图中机器可能包括附加设备, 本画册仅供参考, 以实物为准。  
版权为三一所有, 未经三一书面许可, 本画册任何内容不得被复制用于任何目的。

© 2022 年 2 月版

