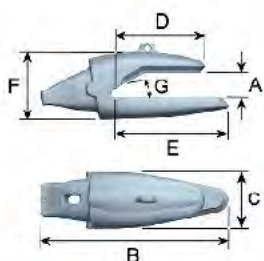
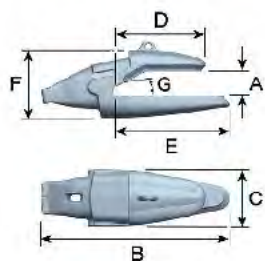


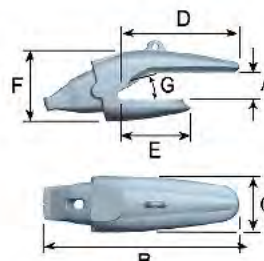
W40 SPECIFICATIONS Teeth, Adapters, Accessories



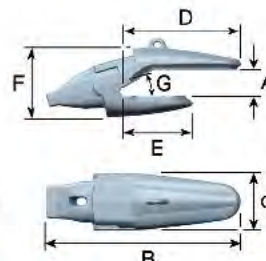
BE



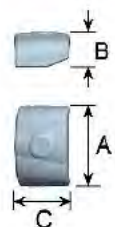
BME



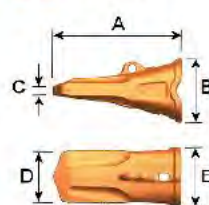
TL



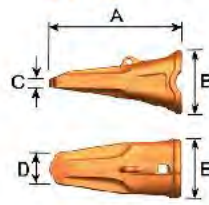
MTL



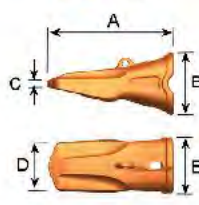
CM



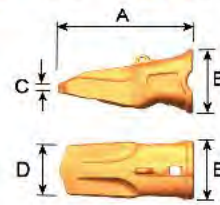
AE



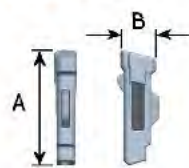
PE



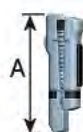
AL



XAL



SL-lock



ML-lock



T-tool

Typical machine weight - Excavator
Maximum breakout force in HD/XHD

120-200 MT
623 kN

Typical machine weight - Face shovel
Maximum breakout force in HD/XHD

120-300 MT
779 kN

Typical machine weight - Loader
Maximum breakout force in HD/XHD

>205 MT
1113 kN

Type	Part. no		Weight kg	Lip thickness mm	A mm	B mm	C mm	D mm	E mm	F mm	G nose angle*
BE	740010		127.0	100	102	760	226	364	457	274	10
BME	740012		118.0	100	102	760	226	364	457	274	10
BE	740014		142.0	120	123	814	226	394	498	294	10
BME	740015		135.0	120	123	814	226	394	498	294	10
TL	840026		128.0	100	103	774	226	465	273	281	15
MTL	840027		122.3	100	103	774	226	465	273	282	15
CM	740501		11.9		238	100	161				
AE	740110		65.0		521	262	34	210	238		
PE	740120		59.5		534	262	33	129	238		
AL	840110		74.0		531	262	34	208	238		
XAL	840111		87.0		543	262	34	201	238		
SL-lock	740301		1.9		200	75					
ML-lock*	740302		2.2		200						
T-tool	700700		1.2								

* Use a 19 mm socket wrench to mount and dismount the mechanical lock 740302.



EXCAVATOR TEETH AND ADAPTERS

ADAPTER

BE

Standard bottom leg adapter. Low profile design, improved flow of material in and out of bucket.

BME

Bottom leg adapter with a mechanical wear cap. The top of the adapter is well protected against excess wear.

WEAR CAP

CM

Mechanical wear cap protects the adapter top side in high abrasion and impact applications.

LOCK

SL

Standard lock provides easy and secure tooth replacement. The vulcanized rubber core provides a strong and tight fit.

ML

Mechanical lock for safer mounting and dismounting procedure

TOOTH

AE

Abrasion tooth for highly abrasive soils and rocks such as granite, basalt and sandstone. The design provides maximal wear material with maintained good penetration.

PE

Penetration tooth with added body mass and narrow tip combines penetration with impact and abrasion resistance.

GPE

Standard tooth with slim design for optimal penetration and durability in general purpose applications.

WE

Penetration tooth for hard surface layers and compact terrain.

TOOL

T

Tool for mounting and dismounting the locking device. Simplifies the change of teeth and is recommended for safety reasons.



LOADER TEETH AND ADAPTERS

ADAPTER

TL

Standard top leg adapter. Low profile design, improved flow of material in and out of bucket.

MTL

Top leg adapter with a mechanical wear cap. The top of the adapter is well protected against excess wear.

WEAR CAP

CM

Mechanical wear cap protects the adapter top side in high abrasion and impact application.

LOCK

SL

Standard lock provides easy and secure tooth replacement. The vulcanized rubber core provides a strong and tight fit.

ML

Mechanical lock for safer mounting and dismounting procedure

TOOTH

AL

Standard tooth which offers good penetration. Optimal in both general and highly abrasive environments.

XAL

Abrasion tooth for highly abrasive soils and rocks such as granite, basalt and sandstone. The design provides maximal wear material with maintained good penetration.

TOOL

T

Tool for mounting and dismounting the locking device. Simplifies the change of teeth and is recommended for safety reasons.



SHROUDS EXCAVATOR & LOADER

LIP SHROUD

MSC	MSL	MSR	MSP
<p>Mechanical lip shroud Center</p> <p>For straight edges and for use in combination with MSL & MSR on spade nose buckets. Provides full lip protection between adapters in abrasive applications.</p>	<p>Mechanical lip shroud Left*</p> <p>15° angle for delta and spade nose buckets.</p> <p>* Left from excavating direction.</p>	<p>Mechanical lip shroud Right*</p> <p>15° angle for delta and spade nose buckets.</p> <p>* Right from excavating direction.</p>	<p>Mechanical shroud protector designed to protect the locking device and the backside of the shrouds.</p>

RAIL	LOCKING PARTS	SIDE SHROUD	PIN AND RING
<p>WSR</p> <p>Welded on shroud rail holds the lip shrouds in secure position.</p>	<p>Shroud Lock, Bolt and Washer</p> <p>Self tightening lock, bolt and washer for the mechanical shroud.</p>	<p>SSM</p> <p>Mechanical side shroud is used to protect the bucket side plates and fastened with pin and ring.</p>	<p>PIN AND RING</p> <p>Locking pin and ring for the side shroud.</p>

HEEL SHROUD

WHS
<p>Welded on heel shroud provides excellent wear protection of the lower outside corner of all types of buckets.</p>

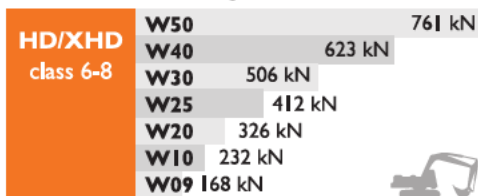


APPLICATION TABLE

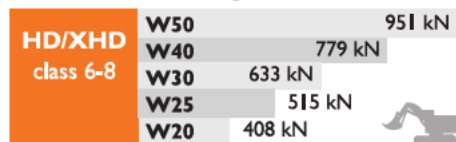
APPLICATION TABLE Based on DIN 18300 ground classification			
Ground classification	Description of ground conditions	Working conditions	Application
Class 1 Top soil without stones	Top layer of soil.	Very little wear. Very little penetration resistance. No impact resistance.	GP
Class 2 Wet ground	Sludge, mud, peat.	Little wear. Very little penetration resistance. No impact resistance.	GP
Class 3 Light ground	Sand, fine gravel, sandy soil. Stone size up to approx. 60 mm	Moderate wear. Little penetration resistance. No impact resistance.	GP
Class 4 Moderately heavy ground	Very stony ground, gravel, stones. Stone size above 60 mm.	Considerable wear. Some penetration resistance. Moderate impact resistance.	GP / HD
Class 5 Dense, moderately heavy ground	Till, rigid clay, sand-clay mix, moraine, marl.	Considerable wear. Moderate penetration resistance. Little impact, some break through resistance.	HD
Class 6 Dense, heavy ground	Hard marl and clay, hard sandy ground, hard stony soil. Stone size up to approx. 200 mm.	Considerable wear. Considerable penetration resistance. Considerable impact and break through resistance.	HD
Class 7 Lighter rock	Loose rock, crumbled rock, slate. Very hard ground with stones, approx. 200 mm or bigger.	Usually considerable wear. Considerable penetration resistance. Considerable impact and break through resistance.	XHD
Class 8 Heavy rock	Blasted rock, size over 0,1 m ³ .	Very significant wear. Considerable penetration resistance. Very significant impact and break through resistance.	XHD

For further information on welding, assembly and maintenance, see welding and assembly instructions.

Breakout force diagram – Backhoe



Breakout force diagram – Face shovel



Breakout force diagram

