



SCC4500A

SANY Crawler Crane 450 Tons Lifting Capacity

Quality Changes the World



Max. lifting moment: 6006t·m

Longest boom: 84m

Longest boom +jib: 84m + 84m

The parameters and diagrams in the brochure is only for reference, which is subject to further update in real machine.

■ www.sany.com.cn



Crawler Crane Series
SCC4500A

P03	Main Characteristics	<ul style="list-style-type: none"> ▪ Product Specification ▪ Safety Devices
P09	Technical Parameters	<ul style="list-style-type: none"> ▪ Major Performance & Specifications ▪ Outline Dimension ▪ Transport Dimensions ▪ Transport Plan ▪ Self-Assembly Plan
P26	Cofigurations	<ul style="list-style-type: none"> ▪ HJFJ-2 Configuration ▪ HJFJDB-5 Configuration ▪ H Configuration ▪ HDB Configuration ▪ HJ Configuration ▪ HJDB Configuration ▪ LJ(DB) Configuration ▪ Working Radius of LJDB Configuration



SCC4500A
SANY CRAWLER CRANE
450 TONS LIFTING CAPACITY

QUALITY CHANGES THE WORLD

Main Characteristics

- Page 04 Product Specification
- Page 07 Safety Devices



Product Specification



Engine

- Model: Cummins Diesel engine (European Tier III Emission Standard);
- Type: water-cooled, vertical in-line 6 cylinders, direct injection, turbo-charger, intercooler, complied with European Off-highway Tier III Emission Standard and Chinese Off-highway Tier III Emission Standard;
- Displacement: 10.8L;
- Rated power: 298kW/1800rpm;
- Max. Torque: 1898N·m/1400rpm;
- Starter: 24V-8.0kW;
- Radiator: fin type aluminum plate core;
- Air cleaner: Dry type system with main filter element, safety element and resistance indicator;
- Throttle: Grip type hand throttle, electrically-controlled;
- Fuel filter: Replaceable paper element;
- Batteries: Four 12V×180Ah capacity batteries, connected in series and then in parallel;
- Fuel tank capacity: 800L.

Electrical Control System

- Self-developed SYIC-I integrated control system is adopted with higher integration, precise operation and reliable quality;
- Control system consists of power system, engine system, main control system, LMI system, auxiliary system and safety monitoring system;
- Main electrical components are from internationally or industrially well-known brands, and they can perform stably in such bad environment as in severe low or high temperature, plateau, and sandstorms. The design with multi-stage safety limits and kinds of safety signal indicators, totally complies with CE Standard;
- LMI, combined monitors and closed circuit monitor are directly visible to operator. LMI detects the lifting moment and other status; combined monitors display operation conditions, limited status under control and alarms; closed circuit monitor monitors working conditions of the winch and rear parts. For armrest boxes at both sides, there are three operation levers, and the button switches the control functions, so the function elected and respective operating range of the lever will appear on the monitors;

Hydraulic System

- Main pumps: five close piston pumps of electronic proportion are adopted to provide oil supply for main actuators of main machine;
- Assisting pump: electronic proportion open piston pump, providing oil for assisting cylinder;
- Back-stop pump: load-sensitive feedback pump, providing oil for back-stop system;
- Gear pump: two dual-gear pumps for oil-boosting system, oil radiator, A/C control circuit;
- Control: closed main pump adopts electronically controlled system, and the electronic lever controls the closed the pump and variable-placement motor;
- Rated pressure of main system: 35MPa;
- Oil boosting system: 3.5 MPa;
- Hydraulic Tank Capacity: 817L;
- Components: hydraulic system of load hoisting, traveling, swing, hoisting and luffing, servo, anti-backstop, cooling, aux. system. Main components are all imported originally;
- Features: Closed circuit is adopted for all load hoisting hydraulic, traveling hydraulic, hoisting and luffing hydraulic and swing hydraulic system, featured by saving energy, high-efficiency, fast-reaction, low heat emission, and long service life;
- Servo hydraulic system adopts electronic proportion controlled components for accurate and smart control;
- Backstop hydraulic system adopts external-controlled releasing balance valve on the hydraulic, safety and reliable;
- Cooling system is featured with high radiating power and excellent cooling result.

Cab

- Fully-enclosed steel frame structure and large area of glass window at front, sides and top make brightened cab with broaden view. The floating, damping and de-noising, and multi-stage adjusted seat, and air conditioner enable better operating experience. There are control lever, control button and ignition lock fitted in the right and left armrest box and assisting control box. The low noise (less than 85dB), the ergonomically designed seat and buttons realize more comfortable operation. The cab can tilt up from 0°~24° for broaden view and rotates to the front of the platform for convenient transport.

Closed circuit camera system

- The camera system is fitted with two monitors and multi cameras, each monitor displaying four pictures at most, realizing real-time monitoring the rope rotating of the winch drum, lifting status of the superlifting counterweight and surrounding;
- The system is equipped with recording function, and longest reserving time can be up to 76 hours, providing reference to the operation and accident.



Product Specification

Main and Aux. Load Hoist Mechanism

- A variable hydraulic motor drives the planetary gear reducer to control the lifting and lowering of main hoists I and II. A good inching performance is provided. The highest speed can be realized through main hoist I and II. Synchronization function is designed. One hoist for load less than 225t, dual main hoists work at the same time for load exceeding 225t; When single rope pull of any main hoist is larger than 6t, the synchronization function acts, winching speed of out most layer reaches 140m/min, and the largest parts of line is 36. Multiple layers of wire rope on fold-line drum can avoid messing rope. The gearbox is quiet and efficient, with longer service life and convenient fuel change.

Main load hoist mechanism I	Drum diameter	666mm
	Rope speed on the outermost work layer	0~140m/min
	Steel rope diameter	26mm
	Steel rope length of main hoist	950m
	Rated tension of single rope	15.3t
Main load hoist mechanism II	Drum diameter	666mm
	Rope speed on the outermost work layer	0~140m/min
	Steel rope diameter	26mm
	Steel rope length of main hoist II	950m
	Rated tension of single rope	15.3t

Boom/Jib/Superlift Hoist Mechanism

- Including: luffing mechanisms of the boom, jib and superlift;
- Drums with fold-line grooves are adopted for all luffing devices. Hydraulic motor drives the planetary gear reducer with excellent infinitely variable displacement to realize multi-functions.

Boom luffing mechanism	Drum diameter	641mm
	Rope speed on the outermost work layer	(0~70)×2m/min
	Steel rope diameter	26mm
	Steel rope length of boom luffing	560m
Jib luffing mechanism	Drum diameter	676mm
	Rope speed on the outermost work layer	0~110m/min
	Steel rope diameter	26mm
	Steel rope length of jib luffing	740m
Superlift mast luffing mechanism	Drum diameter	676mm
	Rope speed on the outermost work layer	0~110m/min
	Steel rope diameter	26mm
	Steel rope length of superlift luffing	840m

Swing Mechanism

- Swing hydraulic system adopts dual motors and is driven by the the planetary reducer via gear. It can realize 360° swinging range, infinitely variable swing speed of 0~0.86r/min, and steady free flipping function,without shocking at start and stop.
- Swing ring: three-row roller external-engaged bearing.

Carbody

- The hydraulic cylinder drives power pin to be connected with track frame to facilitate the assembly and disassembly. Frame structures are welded by high-strength steel. Larger chassis design greatly improves the stability of the crane;
- Carbody counterweight: Total weight:50t, each 25t at rear and front, including counterweight tray: 15t*2, 10t standard counterweight block*2.

Crawler Assembly

- Track frame: each track frame is equipped with an independent travel driving device. A hydraulic travel motor drives the planetary gear reducer and realizes independent traveling through the transmission of driving wheel. There are 4-stage speeds: 0.33km/h, 0.55km/h, 0.77km/h, 1.00km/h. The travel system is configured with high and low speeds: sufficient traction is provided in low speed to to travel with 100% load, while faster job-site transfer is possible in high travel speed. Infinite variable speed can be realized in travel driving system;
- Track shoe: it is manufactured by advanced casting techniques and materials with high strength and good wear resistance. After assembled on the machine, the tension can be adjusted by a hydraulic jack with shims used to secure the crawler position.

Operation Equipments

- All operation equipments adopt high-strength steel tubes and plates; the sheaves at boom tops and hooks are all made of milled welded steel.

Product Specification



Counterweight

- Counterweight include carbody counterweight, rear counterweight, superlift counterweight, and the details are listed below:

Name	Quantity	Length (m)	Width (m)	Height (m)	Unit Weight (t)
Carbody counterweight tray	2	2.99	2.94	1.06	15
Carbody counterweight block	2	2.85	2.4	0.48	10
Rear counterweight tray	2	3.18	2.83	1.8	10
Rear counterweight block	16	2.85	2.4	0.48	10
Superlift counterweight tray	1	8.6	2.5	1.83	30
Superlift counterweight block	18	2.85	2.4	0.48	10

Operation Equipment

- All chords are high-strength steel tubes, and the boom/jib top sheaves are made of high-strength anti-wearing Nylon material protecting wire rope. The hooks are installed with milled welded steel sheave.

Boom

- The boom is a spatial lattice structure with equal section areas for inserts and tapered section areas for both ends. With pipes welded together, and boom tip and root strengthened with steel plates, it can better transfer the load;
- The length of the boom ranges from that (24m) of the base boom to the maximum length (84m) and it can be increased progressively by 6m;
- Composition: boom base 12m×1, transitional insert 10.5m×1, connecting section (boom top) 1.5m×1, insert section 6m×2, and insert section 12m×4;
- Optional offers: 3m boom(for wind energy configuration without superlift, 60m power boom(12m*5);
- The extension jib can install on the boom top.

Fixed Jib

- The fixed jib is a spatial lattice structure with equal section areas for inserts and tapered section areas for both ends. With pipes welded together, and boom tip and root strengthened with steel plates, it can better transfer the load;
- The length of fixed jib is 12m, and with jib extension.

Luffing Jib

- The luffing jib is a spatial lattice structure with equal section areas for inserts and tapered section areas for both ends. With pipes welded together, and boom tip and root strengthened with steel plates, it can better transfer the load;
- The length of the luffing jib ranges from 24m to 84m;
- Composition: jib base 10.5m×1, jib insert 6m×3, jib insert 12m×4, and jib top 7.5m×1;
- The extension jib can install on the jib top.

Superlift Device

- The superlift mast is a spatial lattice structure with equal section areas for inserts and tapered section areas for both ends. With pipes welded together, and boom tip and root strengthened with steel plates, it can better transfer the load;
- The superlift mast is 30m long;
- Composition: mast base 12m×1, insert section 6m×1, and mast top 12m×1.

Hook

- 6 kinds of hooks are available, and specific parameters are as follows:

Name of Hook	Max. Lifting Capacity	Quantity	Pulleys	Unit Weight (t)
450t hook	450t	1	2×9	10.9
240t hook	240t	1	2×4	6.8
160t hook	160t	1	2×3	3.8
130t hook	130t	1	5	3.06
50t hook	50t	1	2	2.4
16t ball hook	16t	1	-	0.9

Note: The 450t hook, 240t hook, and 160t hook can be respectively decomposed to 225t hook, 120t hook, 80t hook. For shield configuration, 200t hook of a single sheave is available.



Safety Devices

Operating Weight

- The operating weight is about 380t, including the Upperworks, lowerworks, rear counterweight of basic machine, carbody counterweight, 24m basic boom and 450t hook.

Ground Bearing Pressure

- The average ground pressure of machine with basic boom is 0.175MPa.

Gradeability

- The gradeability of machine with basic boom is 15%.

Load Moment Limiter

- The proprietary load moment limiter independently developed by Sany is adopted, which forms a network with other controllers through CAN bus line, so as to realize safe and reliable control. The load moment limiter can automatically detect the hoisting weight of the crane and the angle of the boom, and display the rated load capacity, actual load, working radius, and the allowable height of the hook;
- The load moment limiter system consists of a large-screen color display, a host computer, angle sensors, tension sensors, pressure sensors and other components.

Over-hoist Protection of the Main and Auxiliary Hooks

- It is used to prevent the over-hoist of the hook. When the lifting hook is raised to a certain height, the limit switch will start working, and hook will be automatically cut off from moving up by the control system. Meanwhile, the display and the buzzer will give alarms. At this moment, only hook lowering is allowed to prevent over-hoist action.

Over-release Protection Device of the Main and Auxiliary Hook

- It is used to prevent the wire rope over-release. When the wire rope is released to the last three wraps, the limit switch will start working, and the releasing of rope will be automatically stopped by the control system. Meanwhile, the display and the buzzer will give alarms. At this moment, only rope retraction is allowed to prevent over release action.

Assembly/Work Mode Switchover

- In Assembly Mode, some of the safety devices cannot function properly, such as jib limit, boom angle limit in LML, and overload, so as to facilitate the crane assembly;
- In Work Mode, all safety devices can function properly.

Boom Angle Limit

- When boom angle exceeding 85° and jib angle exceeding 75°, corresponding limit switch will be triggered, and the control system will automatically cut off the boom hoisting. Meanwhile, the display and the buzzer will give alarm. At this moment, boom/jib luffing winch won't hoist but it can still lower down;
- When the boom angle is less than 30° and jib angle less than 15°, the control system will automatically cut off the boom/jib from further lowering. Meanwhile, the display and the buzzer will give alarms. At this moment, boom/jib luffing winch won't be able to lower. This protection is automatically controlled by Load Moment Limiter.

Back-stop Device

- The boom and the superlift mast are respectively equipped with a pair of back-stop cylinders. The high pressure of the cylinder shall be overcome when the boom tilts backwards, and high pressure oil will be supplemented automatically when the boom swings forwards to increase the tension and prevent the boom vibration and shaking back;
- The jib rear mast is equipped with a pair of back-stop cylinders, while the jib front mast is equipped with a pair of pneumatic cylinders to prevent the mast from the backward inclination and tension of the jib luffing wire rope.

Brake of Hoisting Mechanism

- All hoisting brakes are spring loaded normally closed disc brakes, which are featured with large braking force, maintenance-free, safe and reliable use, and long service life.

CCTV Monitoring System

- It can be used to monitor the winding conditions of wire ropes of each hoisting mechanism, the conditions of superlift weight, and conditions around the equipment.

Safety Devices



Fault Auto-Diagnosis System

- Faults can be conveniently eliminated based on the fault code.

Black Box

- It is able to record the operation data and machine movement, and analyze the remaining running conditions and service life of machine based on the actual performance.

Pharos

- It is mounted on the top of the boom/jib and alerts in air during night.

Anemometer

- It is mounted on the top of the boom/jib to monitor the wind speed in real time and display relative data on the monitor.

Electronic Level Indicator

- It displays the tilting angle of the crane on the monitor in real time and protects the safe operation of the crane.

Lightning Protection Device

- It includes the lightning protection device and the surge protection device, which can effectively protect the electric system elements and workers from lightning.

Hook Latch

- The lifting hook is installed with a baffle plate to prevent wire rope from falling off.

Swing and Traveling Alarm

- During swing and traveling, the alarm horn will be blown per certain frequency to alert the personnel around the crane. The horn can be shut off through the display.

Function Lock

- The operation will be locked by pulling up the function locking lever on the right side of the seat inside the driver's cab or when the operator left the seat, after which no operating handles will be working so that improper operation caused by the body collision when getting on and off the crane can be avoided.

Regulation of Engine Power Ultimate Load and Stalling Protection

- The controller can monitor the engine power so as to prevent stalling.

Engine Status Monitoring

- It can show the engine coolant temperature, fuel volume, total working hours, engine oil pressure, engine speed, battery and voltage.

Remote Monitoring System

- It monitors and analyzes the operation data so as to realize remote diagnosis of faults and timely solution.

Emergent Stop

- In a sudden loss of control, press the emergent stop, and brakes will be applied on all actions such as hoisting, luffing, swing and traveling and engine stop.

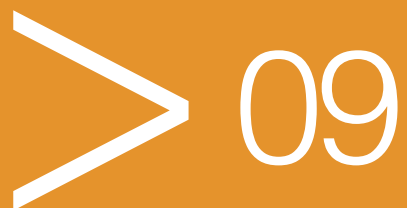


SCC4500A
SANY CRAWLER CRANE
450 TONS LIFTING CAPACITY

QUALITY CHANGES THE WORLD

Technical Parameters

- Page 10 Major Performance & Specifications
- Page 11 Outline Dimension
- Page 13 Transport Dimensions
- Page 20 Transport Plan
- Page 25 Self-Assembly Plan

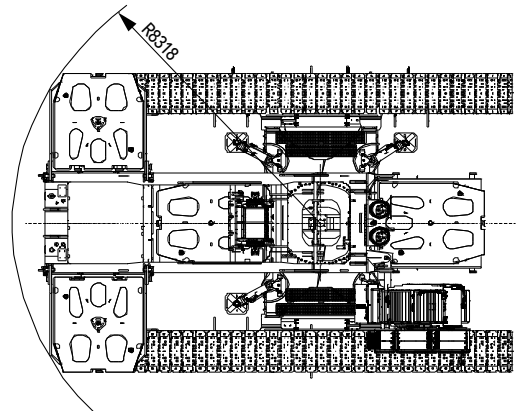
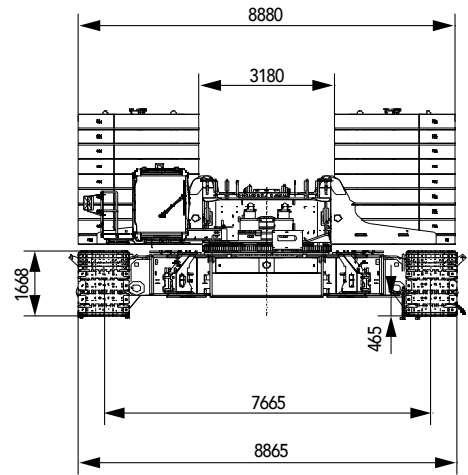
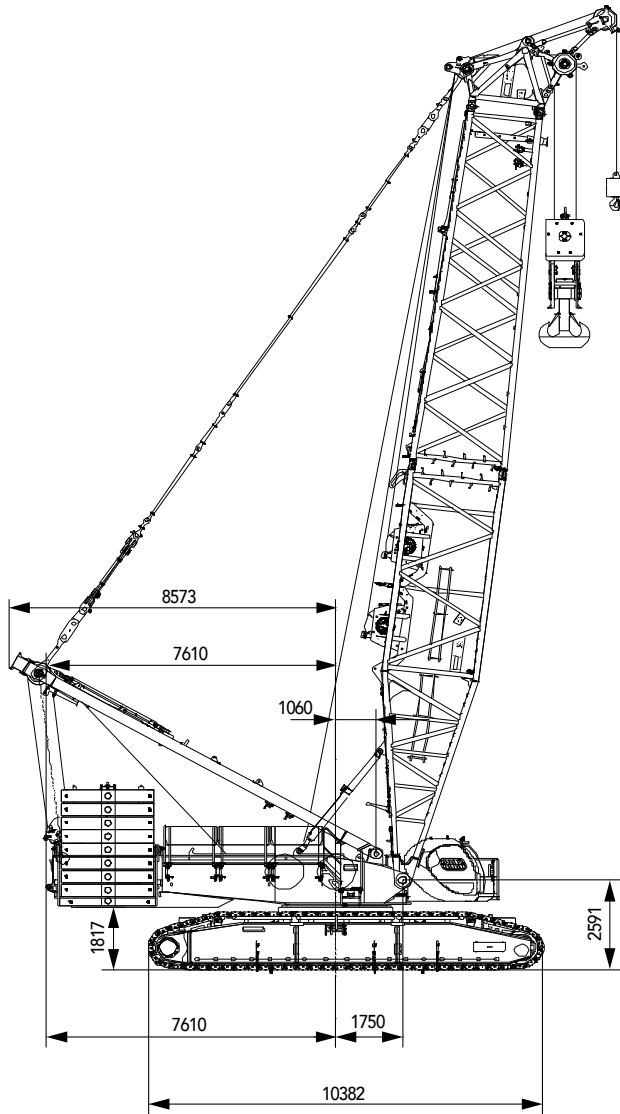


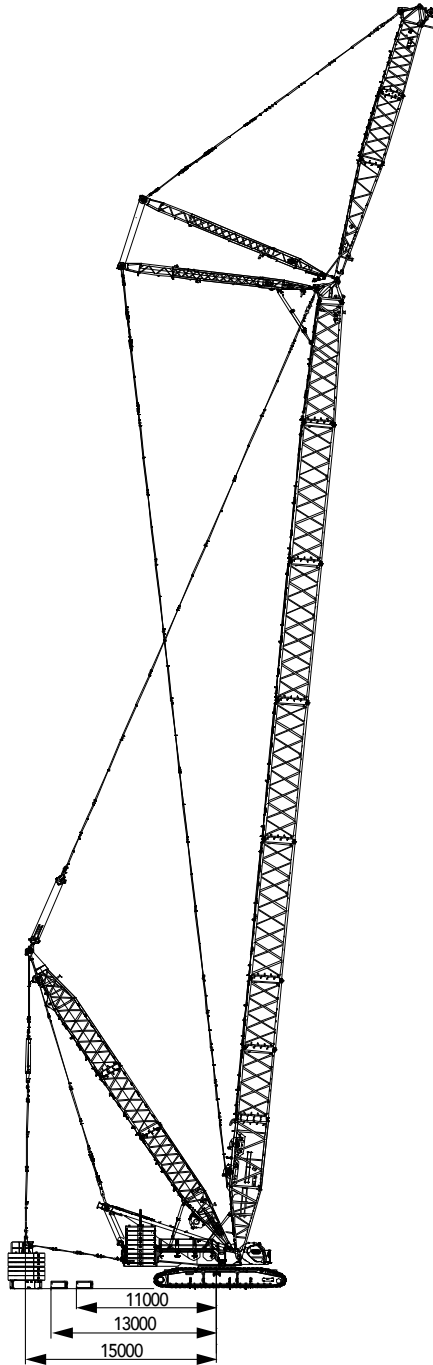
Major Performance & Specifications

Major Performance & Specifications of SCC4500A		
Performance Indicators	Unit	Parameter
Max. rated lifting capacity	t	450
Max. rated lifting capacity (with superlift)	t	450
Max. rated lifting moment	t·m	2984
Max. rated lifting moment (with superlift)	t·m	6006
Boom length	m	24~84
Boom length (with superlift)	m	36~84
Length of mixed boom	m	48~96
Length of mixed boom (with superlift)	m	78~126
Length of luffing jib	m	24~72
Length of luffing jib (with superlift)	m	24~84
Combination of longest boom+jib (LJDB Configuration)	m	84+84
Mixed power boom +fixed jib	m	96+12
Mixed power boom+ fixed jib(with superlift)	m	126+12
Heavy boom + eagle tip (longest)	m	84+9
Boom luffing angle	°	30~85
Jib luffing angle	°	25~75
Max. speed of single rope of the main hoist (outermost work layer)	m/min	0~140
Max. speed of single rope of the aux. hoist (outermost work layer)	m/min	0~140
Max. speed of single rope of the boom luffing (outermost work layer)	m/min	(0~70)*2
Max. speed of single rope of the jib luffing (outermost work layer)	m/min	0~110
Max. speed of single rope of the superlift luffing (outermost work layer)	m/min	0~110
Slewing speed (no load)	r/min	0~0.86
Travel speed	km/h	0~1(adjustable 4 stages)
Gradeability (with base boom, driver's cab backwards)	%	15
Rated output power of the engine	kW/r/min	298/1800
Average ground pressure of the track (boom base, 180t machine counterweight, 50t carbody counterweight and 180t hook)	MPa	0.175
Rear counterweight	t	180(without superlift)/ 140(with superlift)
Superlift counterweight	t	250
Carbody counterweight	t	50
Max. unit transportation dimensions (L × W × H)	mm	12100×3000×3200
Max. unit transportation weight	t	46t

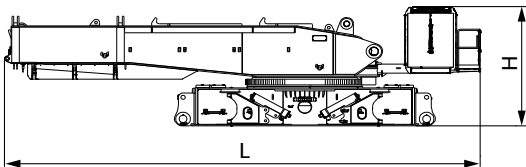
Unit: mm

Outline Dimension

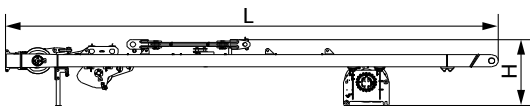


Outline Dimension

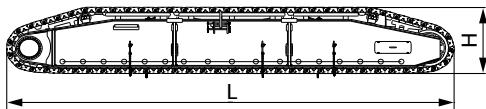
Transport Dimensions



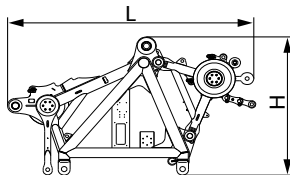
Basic machine	×1
Length(L)	12.10m
Width(W)	3.00m
Height(H)	3.20m
Weight	46.0t



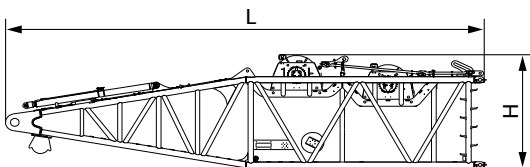
Main hoisting mast (with winch)	×1
Length (L)	11.20m
Width (W)	2.60m
Height (H)	1.68m
Weight	12.11t



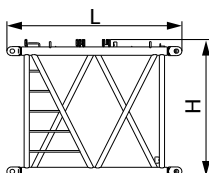
Crawler assembly	×2
Length(L)	10.38m
Width(W)	1.80m
Height(H)	1.67m
Weight	31.00t



Boom top (with pulley blocks)	×1
Length(L)	3.74m
Width(W)	2.78m
Height(H)	2.29m
Weight	5.24t

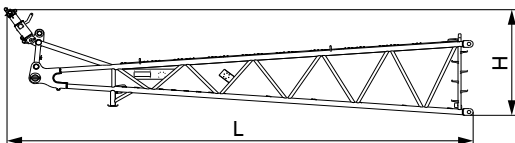
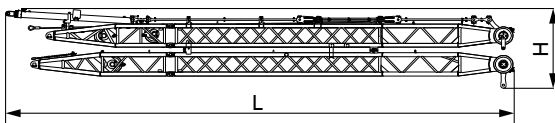
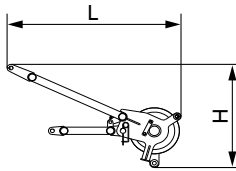
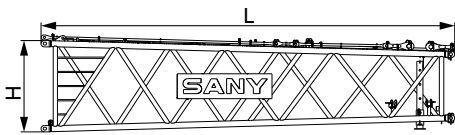
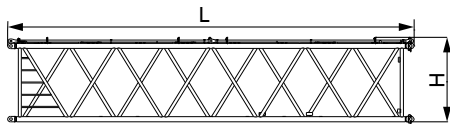
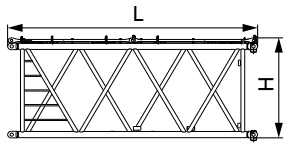


Boom base (with two hoisting winches)	×1
Length(L)	12.34m
Width(W)	3.00m
Height(H)	3.20m
Weight	22.40t



3m boom insert	×1
Length(L)	3.20m
Width(W)	2.98m
Height(H)	2.72m
Weight	1.35t

Transport Dimensions



6m boom insert

×2

Length(L)	6.20m
Width(W)	3.00m
Height(H)	2.77m
Weight	3.24t

12m boom insert A

×4

Length(L)	12.24m
Width(W)	3.00m
Height(H)	2.80m
Weight	5.75t

Boom tapered insert

×1

Length(L)	10.70m
Width(W)	2.98m
Height(H)	2.74m
Weight	6.03t

Boom extension

×1

Length(L)	2.32m
Width(W)	1.00m
Height(H)	0.818m
Weight	0.37t

Front and rear mast of luffing jib

×1

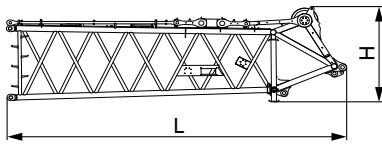
Length(L)	16.80m
Width(W)	3.10m
Height(H)	2.78m
Weight	10.80t

Luffing jib base

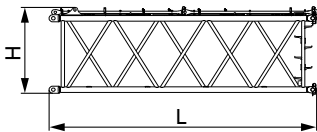
×1

Length (L)	11.20m
Width (W)	2.62m
Height (H)	2.78m
Weight	3.90t

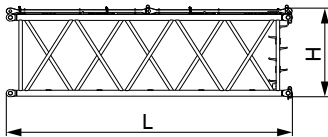
Transport Dimensions



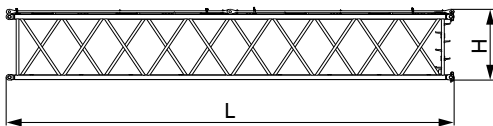
Luffing jib top	×1
Length(L)	8.13m
Width(W)	2.54m
Height(H)	2.48m
Weight	4.34t



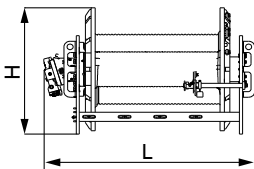
6m luffing jib insert A	×1
Length(L)	6.19m
Width(W)	2.82m
Height(H)	2.17m
Weight	1.97t



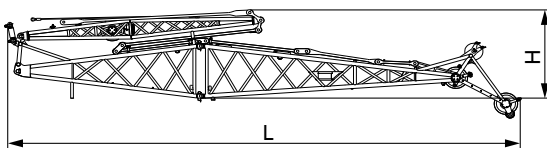
6m luffing jib insert B	×2
Length(L)	6.18m
Width(W)	2.82m
Height(H)	2.11m
Weight	1.91t



12m luffing jib insert	×4
Length(L)	12.20m
Width(W)	2.82m
Height(H)	2.11m
Weight	3.31t

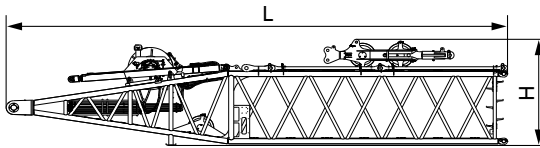


Luffing mechanism	×1
Length(L)	1.72m
Width(W)	1.22m
Height(H)	1.13m
Weight	4.82t



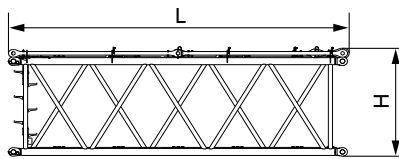
Fixed jib assembly	×1
Length(L)	14.00m
Width(W)	2.40m
Height(H)	3.25m
Weight	5.28t

Transport Dimensions



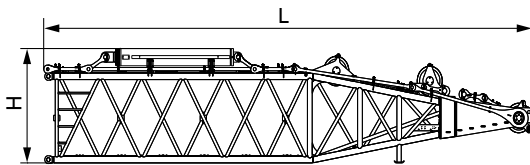
Superlift mast base (with winch) ×1

Length(L)	12.30m
Width(W)	2.96m
Height(H)	2.84m
Weight	13.90t



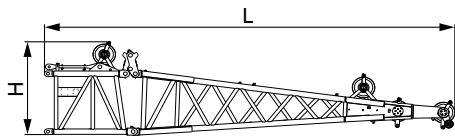
Superlift mast insert (with winch) ×1

Length (L)	6.21m
Width (W)	2.96m
Height (H)	2.14m
Weight	2.90t



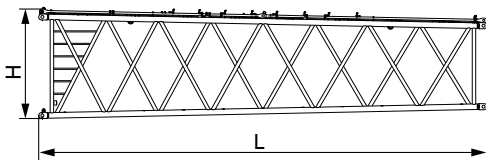
Superlift mast top (with winch) ×1

Length(L)	12.40m
Width(W)	2.96m
Height(H)	2.40m
Weight	9.24t



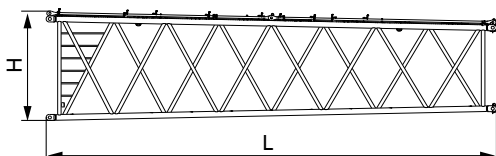
Eagle tip ×1

Length(L)	11.70m
Width(W)	2.67m
Height(H)	2.92m
Weight	7.26t



12m power boom base ×1

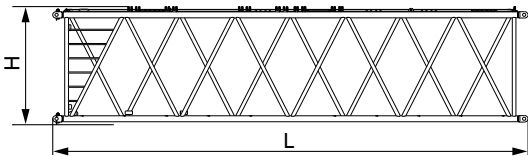
Length(L)	12.20m
Width(W)	3.56m
Height(H)	3.25m
Weight	6.98t



12m power boom top ×1

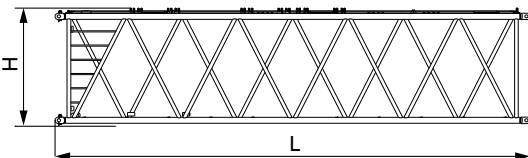
Length (L)	12.20m
Width (W)	3.56m
Height (H)	3.25m
Weight	6.53t

Transport Dimensions



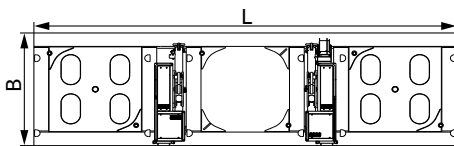
12m power boom insert A ×1

Length(L)	12.20m
Width(W)	3.56m
Height(H)	3.25m
Weight	6.36t



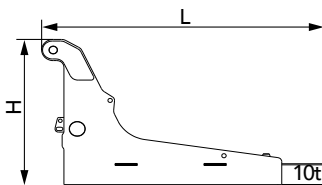
12m power boom insert B ×2

Length(L)	12.20m
Width(W)	3.56m
Height(H)	3.25m
Weight	6.73t



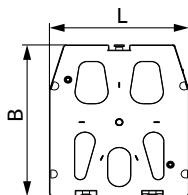
Superlift counterweight tray ×1

Length(L)	8.60m
Width(W)	2.50m
Height(H)	1.83m
Weight	30.0t



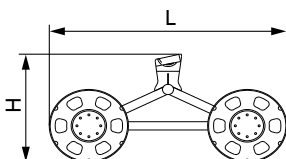
Rear counterweight tray ×2

Length(L)	3.18m
Width(W)	2.83m
Height(H)	1.80m
Weight	10.0t



10t counterweight block ×36

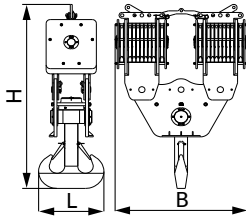
Length(L)	2.40m
Width(W)	2.85m
Height(H)	0.48m
Weight	10.0t



Trolley ×1

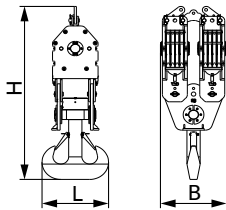
Length(L)	3.00m
Width(W)	2.05m
Height(H)	1.50m
Weight	1.09t

Transport Dimensions



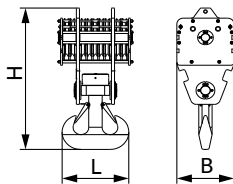
450t hook ×1

Length(L)	1.33m
Width(W)	2.69m
Height(H)	4.07m
Weight	10.80t



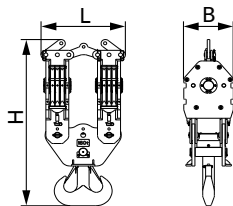
240t hook ×1

Length(L)	1.18m
Width(W)	1.19m
Height(H)	3.58m
Weight	4.71t



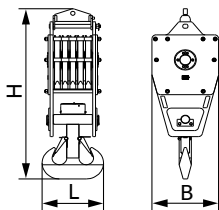
200t hook ×1

Length(L)	0.75m
Width(W)	0.82m
Height(H)	2.28m
Weight	3.81t



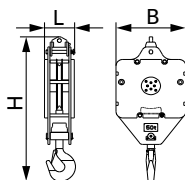
160t hook ×1

Length(L)	1.38m
Width(W)	0.81m
Height(H)	2.99m
Weight	3.81t



130t hook ×1

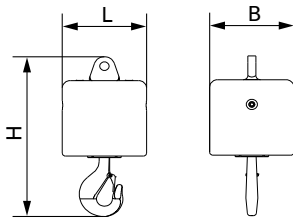
Length(L)	0.75m
Width(W)	0.82m
Height(H)	2.28m
Weight	3.06t



50t hook ×1

Length(L)	0.45m
Width(W)	1.02m
Height(H)	2.30m
Weight	2.52t

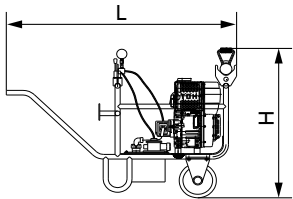
Transport Dimensions



16t hook

×1

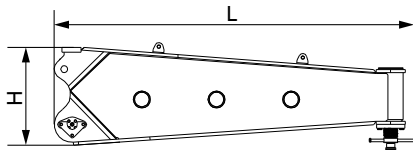
Length(L)	0.53m
Width(W)	0.53m
Height(H)	1.10m
Weight	0.94t



Portable power pack

×1

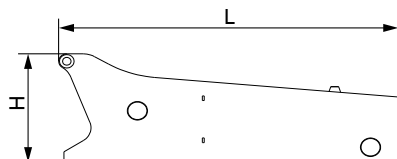
Length(L)	1.55m
Width(W)	0.70m
Height(H)	1.09m
Weight	0.20t



Side boom erection outrigger

×2

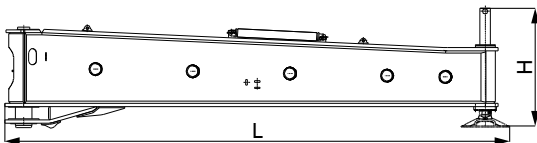
Length(L)	3.62m
Width(W)	0.80m
Height(H)	0.98m
Weight	1.58t



Carbody counterweight

×2

Length(L)	3.03m
Width(W)	2.94m
Height(H)	1.05m
Weight	15.0t



Front boom erection outrigger

×2

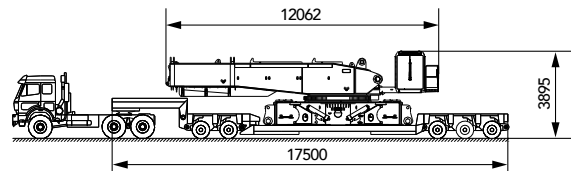
Length(L)	6.08m
Width(W)	0.43m
Height(H)	1.18m
Weight	4.70t

Note:

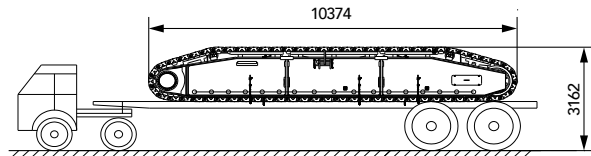
- 1.The dimension listed is schematic, which is not proportional. All the dimensions are designed values without packing.
- 2.The dimensions are subject to deviation due to manufacturing tolerances.

Transport Plan

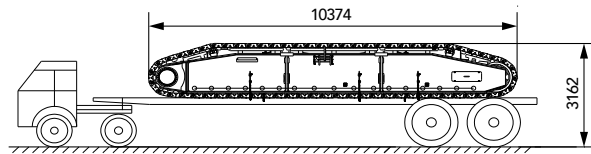
Trailer 1	<ul style="list-style-type: none"> Length 17.5m, Width 2.5m, Height 0.576m, Rated load 60t
Transport weight	46t
Part	<ul style="list-style-type: none"> Rotating platform, Carbody
Truckload	1+1



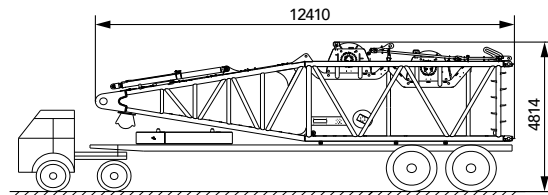
Trailer 2	<ul style="list-style-type: none"> Length 17.5m, Width 2.5m, Height 1.2m, Rated load 35t
Transport weight	31t
Part	Crawler frame assembly
Truckload	1



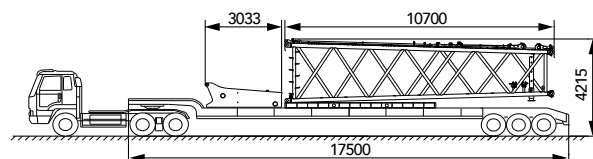
Trailer 3	<ul style="list-style-type: none"> Length 17.5m, Width 2.5m, Height 1.2m, Rated load 35t
Transport weight	31t
Part	Crawler frame assembly
Truckload	1



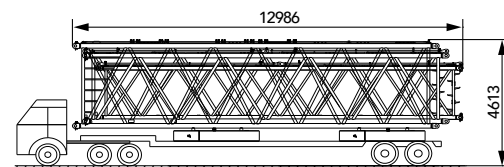
Trailer 4	<ul style="list-style-type: none"> Length 17.5m, Width 2.5m, Height 1.2m, Rated load 35t
Transport weight	32.112t
Part	<ul style="list-style-type: none"> Boom base 10t counterweight block
Truckload	1+1



Trailer 5	<ul style="list-style-type: none"> Length 17.5m, Width 2.5m, Height 1.2m, Rated load 35t
Transport weight	27.07t
Part	<ul style="list-style-type: none"> Boom top 10t counterweight block Base plate
Truckload	1+1+1

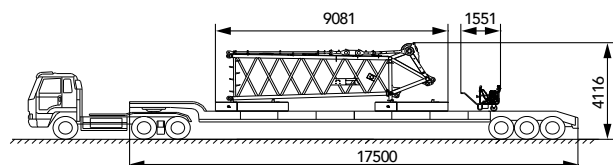
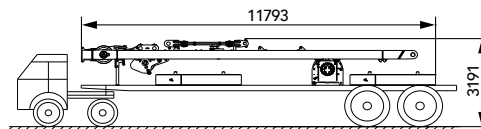
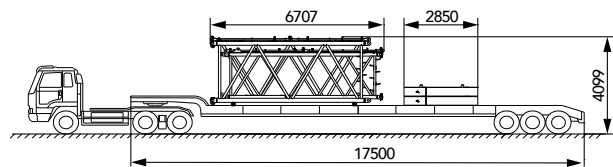
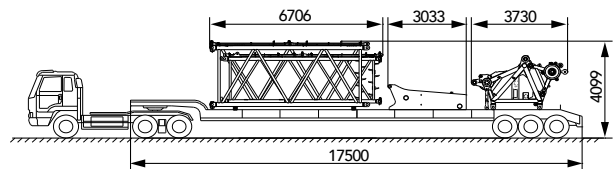
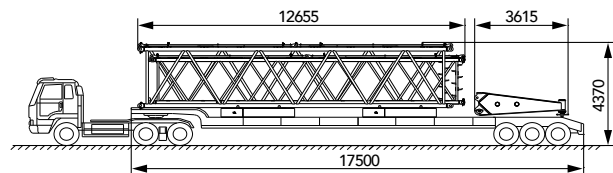
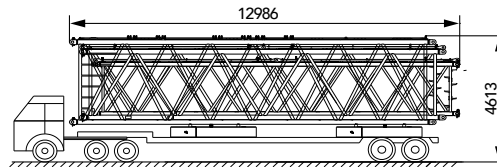


Trailer 6.7	<ul style="list-style-type: none"> Length 17.5m, Width 2.5m, Height 1.2m, Rated load 35t
Transport weight	35.075t
Part	<ul style="list-style-type: none"> 12m boom insert A 12m luffing jib insert 12m power boom insert B 10t counterweight block
Truckload	1+1+1+2



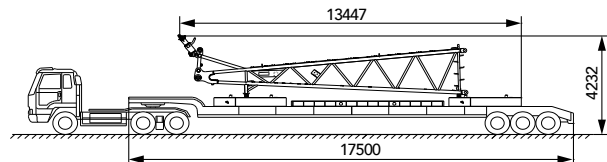
Transport Plan

Trailer 8	<ul style="list-style-type: none"> Length 17.5m, Width 2.5m, Height 1.2m, Rated load 35t
Transport weight	35.515t
Part	<ul style="list-style-type: none"> 12m boom insert A 12m luffing jib insert 12m power boom insert A 10t counterweight block
Truckload	1+1+1+2
Trailer 9	<ul style="list-style-type: none"> Length 17.5m, Width 2.5m, Height 1.2m, Rated load 35t
Transport weight	29.935t
Part	<ul style="list-style-type: none"> 12m boom insert A 12m luffing jib insert 10t counterweight block Side boom erection outrigger
Truckload	1+1+2+2
Trailer 10	<ul style="list-style-type: none"> Length 17.5m, Width 2.5m, Height 1.2m, Rated load 35t
Transport weight	25.242t
Part	<ul style="list-style-type: none"> 6m boom insert 6m luffing jib insert B Connection tip Pulley blocks Carbody counterweight tray
Truckload	1+1+1+2+1
Trailer 11	<ul style="list-style-type: none"> Length 17.5m, Width 2.5m, Height 1.2m, Rated load 35t
Transport weight	25.152t
Part	<ul style="list-style-type: none"> 6m boom insert 6m luffing jib insert B 10t counterweight block
Truckload	1+1+2
Trailer 12	<ul style="list-style-type: none"> Length 17.5m, Width 2.5m, Height 1.2m, Rated load 35t
Transport weight	32.11t
Part	<ul style="list-style-type: none"> Main hoisting mast and winch 10t counterweight block
Truckload	1+2
Trailer 13	<ul style="list-style-type: none"> Length 17.5m, Width 2.5m, Height 1.2m, Rated load 35t
Transport weight	29.36t
Part	<ul style="list-style-type: none"> Jib top Portable power plant Jib luffing mechanism 10t counterweight block
Truckload	1+1+1+2

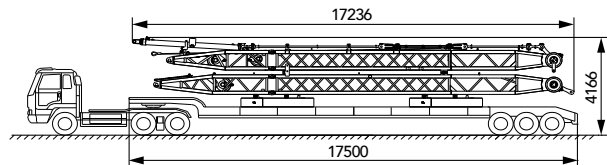


Transport Plan

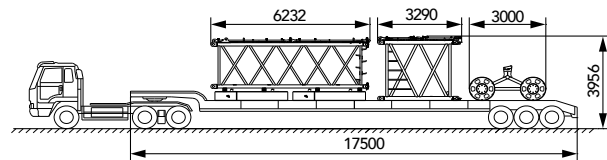
Trailer 14	<ul style="list-style-type: none"> Length 17.5m, Width 2.5m, Height 1.2m, Rated load 35t
Transport weight	<ul style="list-style-type: none"> 30.11t
Part	<ul style="list-style-type: none"> Luffing jib base, Base plate, 10t counterweight block
Truckload	<ul style="list-style-type: none"> 1+1+2



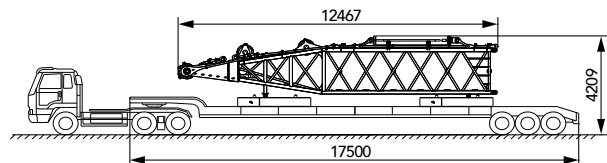
Trailer 15	<ul style="list-style-type: none"> Length 17.5m, Width 2.5m, Height 1.2m, Rated load 35t
Transport weight	<ul style="list-style-type: none"> 30.794t
Part	<ul style="list-style-type: none"> Front and rear luffing mast, 10t counterweight block
Truckload	<ul style="list-style-type: none"> 1+1+2



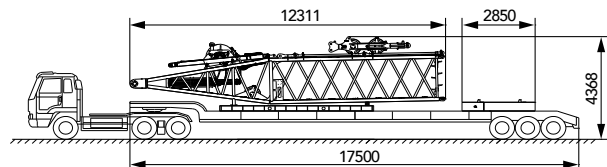
Trailer 16	<ul style="list-style-type: none"> Length 17.5m, Width 2.5m, Height 1.2m, Rated load 35t
Transport weight	<ul style="list-style-type: none"> 25.624t
Part	<ul style="list-style-type: none"> 6m luffing jib insert A, Trolley, 3m boom insert, 10t counterweight block
Truckload	<ul style="list-style-type: none"> 1+1+1+2



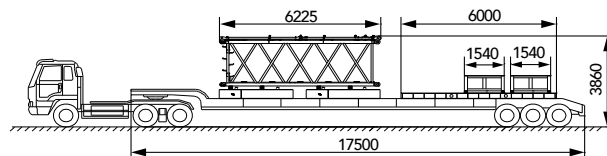
Trailer 17	<ul style="list-style-type: none"> Length 17.5m, Width 2.5m, Height 1.2m, Rated load 35t
Transport weight	<ul style="list-style-type: none"> 29.24t
Part	<ul style="list-style-type: none"> Superlift mast top, 10t counterweight block
Truckload	<ul style="list-style-type: none"> 1+2



Trailer 18	<ul style="list-style-type: none"> Length 17.5m, Width 2.5m, Height 1.2m, Rated load 35t
Transport weight	<ul style="list-style-type: none"> 30.11t
Part	<ul style="list-style-type: none"> Superlift mast base and superlift luffing mechanism, Base plate, 10t counterweight block
Truckload	<ul style="list-style-type: none"> 1+1+1

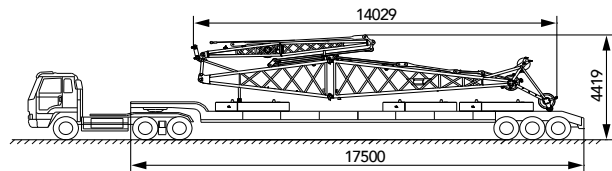


Trailer 19	<ul style="list-style-type: none"> Length 17.5m, Width 2.5m, Height 1.2m, Rated load 35t
Transport weight	<ul style="list-style-type: none"> 30.01t
Part	<ul style="list-style-type: none"> Superlift mast top, Base plate, Packing cases, 10t counterweight block
Truckload	<ul style="list-style-type: none"> 1+1+2+2

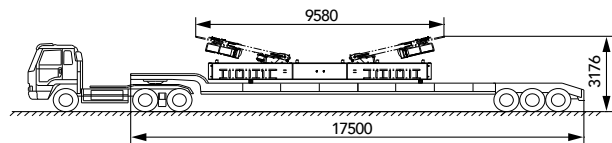


Transport Plan

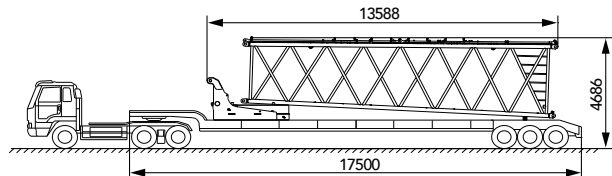
Trailer 20	<ul style="list-style-type: none"> Length 17.5m, Width 2.5m, Height 1.2m, Rated load 35t
Transport weight	25.28t
Part	<ul style="list-style-type: none"> Fixed jib, 10t counterweight block
Truckload	1+3



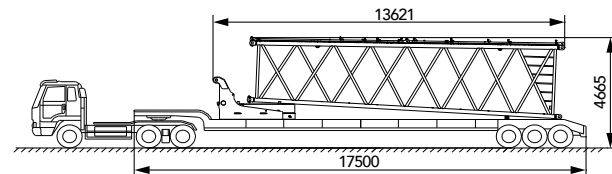
Trailer 21	<ul style="list-style-type: none"> Length 17.5m, Width 2.5m, Height 1.2m, Rated load 35t
Transport weight	28.7t
Part	Superlift counterweight tray
Truckload	1



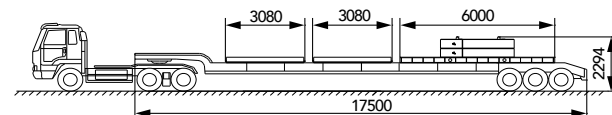
Trailer 22	<ul style="list-style-type: none"> Length 17.5m, Width 2.5m, Height 1.2m, Rated load 35t
Transport weight	26.98t
Part	<ul style="list-style-type: none"> 12m transitional base, Rear counterweight tray, 10t counterweight block
Truckload	1+1+1



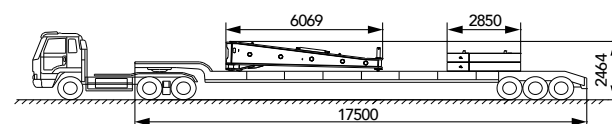
Trailer 23	<ul style="list-style-type: none"> Length 17.5m, Width 2.5m, Height 1.2m, Rated load 35t
Transport weight	26.59t
Part	<ul style="list-style-type: none"> 12m transitional top, Rear counterweight tray, 10t counterweight block
Truckload	1+1+1



Trailer 24	<ul style="list-style-type: none"> Length 17.5m, Width 2.5m, Height 1.2m, Rated load 35t
Transport weight	28t
Part	<ul style="list-style-type: none"> Ramp plate, Base plate, 10t counterweight block
Truckload	2+1+2

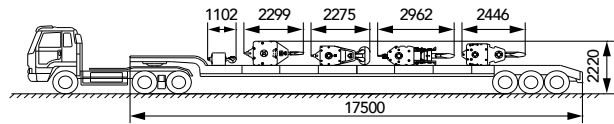


Trailer 25	<ul style="list-style-type: none"> Length 17.5m, Width 2.5m, Height 1.2m, Rated load 35t
Transport weight	30.2t
Part	<ul style="list-style-type: none"> Front boom erection outrigger, 10t counterweight block
Truckload	2+2



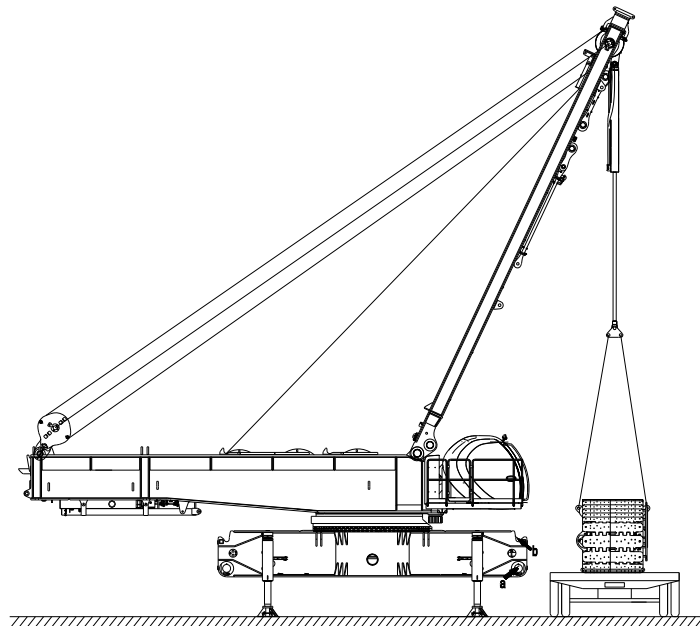
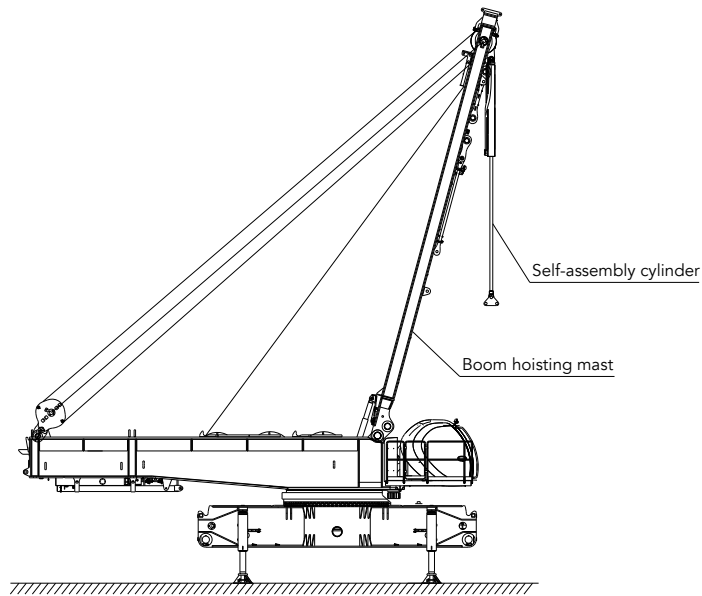
Transport Plan

Trailer 26	<ul style="list-style-type: none">▪ Length 17.5m, Width 2.5m,▪ Height 1.2m, Rated load 35t
Transport weight	<ul style="list-style-type: none">▪ 30.35t
Part	<ul style="list-style-type: none">▪ 16t ball hook,▪ 50t hook,▪ 130t lifting hook,▪ 160t hook,▪ 200t lifting hook,▪ 240t lifting hook,▪ 450t hook,▪ hook
Truckload	<ul style="list-style-type: none">▪ 1+1+1+1+1+1+2



Self-Assembly Plan

Crawler frame self-assembly



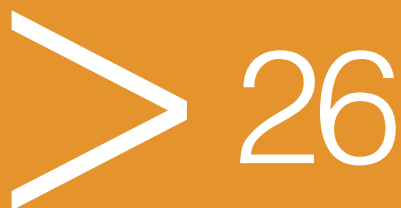


SCC4500A SANY CRAWLER CRANE 450 TONS LIFTING CAPACITY

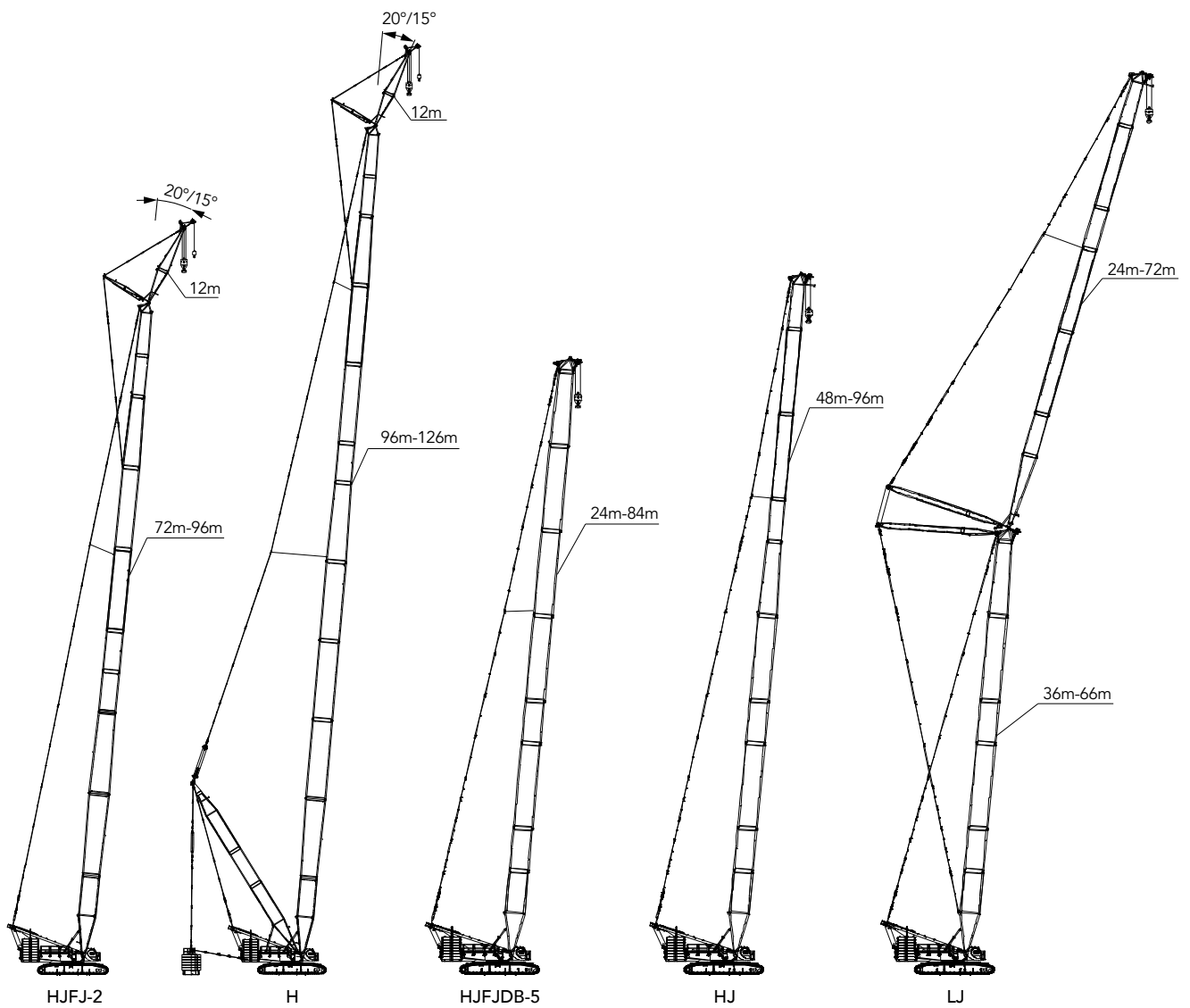
QUALITY CHANGES THE WORLD

Cofigurations

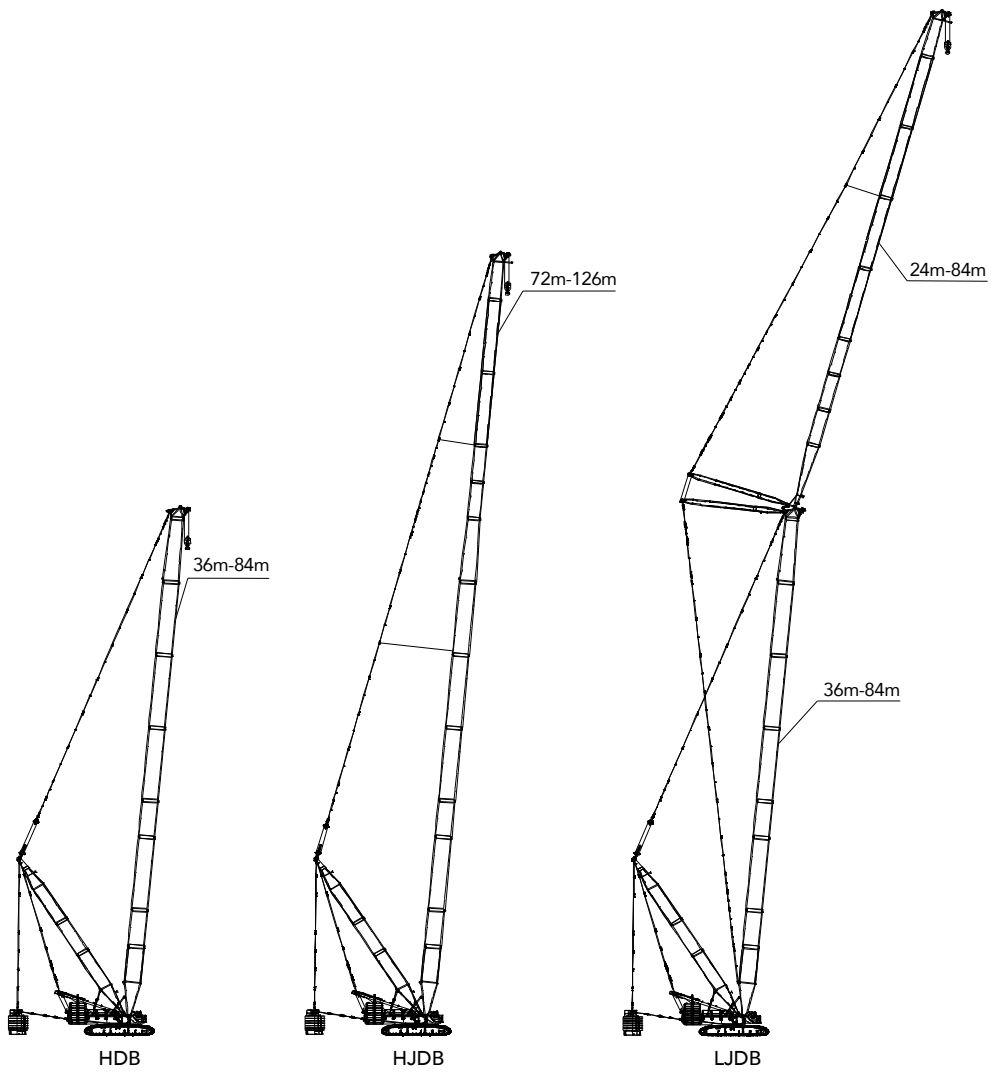
- Page 29 HJFJ-2 Configuration
- Page 32 HJFJDB-5 Configuration
- Page 35 H Configuration
- Page 38 HDB Configuration
- Page 41 HJ Configuration
- Page 44 HJDB Configuration
- Page 47 LJ(DB) Configuration
- Page 54 Working Radius of LJDB Configuration



Configurations



Configurations



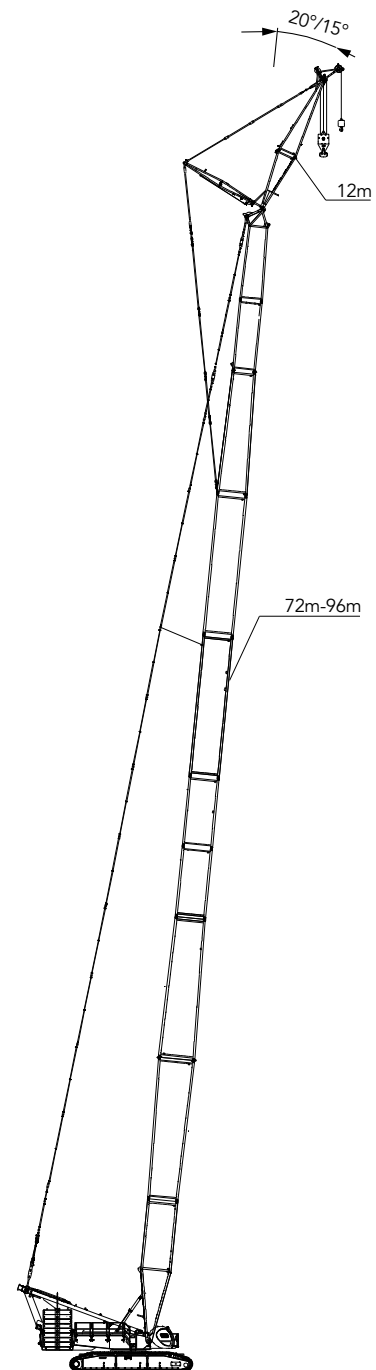
Boom Combination in HJFJ-2

Boom Combination in HJFJ-2						
Boom length (m)	Standard boom insert			Power boom		Jib insert
	3m /(H5)	6m /(H6)	12mA /(H8A)	12m transition base/ (ZH4A)	12m transition top/ (ZH4B)	6mA /(LJ6A)
72*	-	-	1	1	1	1
78*	-	1	1	1	1	1
84*	-	2	1	1	1	1
90*	-	1	2	1	1	1
93*	1	1	2	1	1	1
96*	-	2	2	1	1	1

Notes: Combinations marked "*" mean the mid-point suspension cable is must, otherwise, the boom may break.

The use the mid-point suspension cable must be strictly in accordance to the instructions.

Attention: If the boom length is 78m or more, the crane must boom up from side by side erection outrigger or from the front by the special front erection outrigger, otherwise the crane may tip over.



Load Chart of HJFJ-2

SCC4500A—HJFJ-2 1/2							
Boom length: 72~96m, Jib length: 12m, Boom to jib angle: 15°, Rear counterweight: 180t, Carbody counterweight: 50t							
Radius (m)	72	78	84	90	93	96	Radius (m)
14	142	140	135	132	127	125	14
16	130	127	123	119	118	116	16
18	115	112	109	105	104	103	18
20	102	99.4	96.7	94	92.5	91.4	20
22	91.8	89.2	86.8	84.3	83	82	22
24	82.9	80.6	78.4	76.1	74.9	74	24
26	75.3	73.1	71.2	69	67.9	67.1	26
28	68.8	66.7	64.9	62.9	61.8	61.1	28
30	63	61.1	59.4	57.5	56.5	55.8	30
32	57.6	56.2	54.5	52.7	51.8	51.1	32
34	52.7	51.8	50.2	48.5	47.5	46.9	34
36	48.3	47.4	46.3	44.7	43.8	43.2	36
38	44.5	43.6	42.9	41.2	40.3	39.8	38
40	41.1	40.2	39.4	38.1	37.3	36.7	40
44	35.2	34.3	33.6	32.7	31.8	31.4	44
48	30.4	29.5	28.8	27.8	27.3	26.8	48
52	26.3	25.4	24.7	23.8	23.2	23	52
56	22.9	22	21.3	20.3	19.8	19.6	56
60	19.9	19	18.3	17.4	16.8	16.6	60
64	17.3	16.4	15.7	14.8	14.2	14	64
68	15	14.1	13.4	12.5	11.9	11.7	68
72	12.9	12.1	11.4	10.5	9.9	8.8	72
76	11.1	10.2	9.6	8.6	7.4	6.1	76
80		8.6	7.6	7	4.7	3.5	80
84			4.9	4.7			84

Unit: t

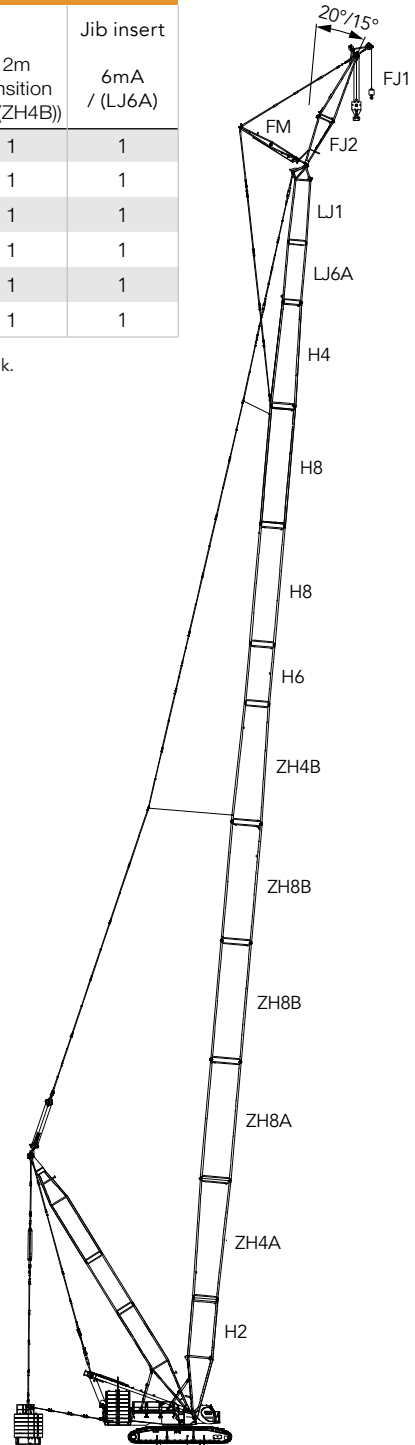
Load Chart of HJFJ-2

SCC4500A—HJFJ-2 2/2							
Boom length: 72~96m, Jib length: 12m, Boom to jib angle: 20°, Rear counterweight: 180t, Carbody counterweight: 50t							
Radius (m)	72	78	84	90	93	96	Radius (m)
14	130	129	124				14
16	128	127	122	121	116	114	16
18	116	113	110	107	105	104	18
20	103	100	97.7	95	93.6	92.4	20
22	92.6	90.1	87.7	85.2	83.9	82.9	22
24	83.7	81.3	79.2	76.9	75.7	74.8	24
26	76	73.9	71.9	69.8	68.7	67.9	26
28	69.4	67.4	65.6	63.6	62.5	61.8	28
30	63.6	61.7	60	58.1	57.1	56.5	30
32	58.1	56.7	55.1	53.3	52.4	51.7	32
34	53.1	52.2	50.7	49	48.1	47.5	34
36	48.7	47.9	46.8	45.2	44.3	43.7	36
38	44.9	44	43.3	41.7	40.8	40.3	38
40	41.4	40.5	39.8	38.6	37.7	37.2	40
44	35.5	34.6	33.9	33	32.3	31.8	44
48	30.6	29.7	29.1	28.2	27.6	27.2	48
52	26.5	25.7	25	24.1	23.5	23.3	52
56	23	22.2	21.5	20.6	20.1	19.8	56
60	20	19.2	18.5	17.6	17	16.8	60
64	17.4	16.5	15.9	15	14.4	14.2	64
68	15.1	14.2	13.5	12.6	12.1	11.9	68
72	13	12.2	11.5	10.6	10.1	9.1	72
76	11.1	10.3	9.6	8.8	7.4	6.1	76
80		8.6	7.5	7.1	4.7	3.5	80
84			5.4	4.9			84

Boom Combination in HJFJDB-5

Boom Combination in HJFJDB-5							
Boom length (m)	Standard boom insert		Power boom				Jib insert
	6m / (H6)	12mA/ (H8A)	12m transition base/(ZH4A)	12m power boom insert A/(ZH8A)	12m power boom insert B/(ZH8B)	12m transition top/(ZH4B)	6mA / (LJ6A)
96*	-	-	1	1	2	1	1
102*	1	-	1	1	2	1	1
108*	0	1	1	1	2	1	1
114*	1	1	1	1	2	1	1
120*	0	2	1	1	2	1	1
126*	1	2	1	1	2	1	1

Note:Combinations marked "*" mean the mid-point suspension cable is must, otherwise, the boom may break.
The use of the mid-point suspension cable must be strictly in accordance to the instructions.



Unit: t

Load Chart of HJFJDB-5

SCC4500A—HJFJDB-5 1/2							
Boom length: 96~126m, Jib length: 12m, Boom to jib angle: 15°, Superlift radius: 15m, Superlift counterweight: 250t, Rear counterweight: 140t, Carbody counterweight: 50t							
Radius(m)	96	102	108	114	120	126	Radius(m)
14	133*						14
16	130*	124*	120*	123*	116*	103*	16
18	127*	121*	117*	120*	116*	102*	18
20	123*	118*	113*	118*	113*	101*	20
22	120*	115*	111*	115*	111*	101*	22
24	117*	112*	108*	113*	109*	99.9*	24
26	113*	109*	105*	110*	106*	99.0*	26
28	110*	106*	102*	108*	104*	98.0*	28
30	107*	103*	99.6*	106*	102*	96.6*	30
32	104*	101*	97.1*	103*	99.8*	93.5*	32
34	102	97.8*	94.5*	101	96.4	90.4*	34
36	99.5	95.1	92.0	98.7	93.6	87.3*	36
38	97.5	93.2	90.0	97.0	90.3	84.8	38
40	95.0	90.9	88.1	94.7	88.1	82.2	40
44	90.5	86.7	84.0	91.3	82.7	77.3	44
48	87.2	83.2	79.8	87.3	78.5	72.9	48
52	83.8	79.8	75.6	84.7	74.4	68.7	52
56	80.9	76.7	71.9	80.8	70.5	65.5	56
60	77.4	73.3	68.7	74.6	67.1	62.5	60
64	71.1	70.1	65.8	68.4	64.1	59.5	64
68	65.6	64.6	63.4	62.9	61.6	56.7	68
72	60.6	59.6	59.0	57.9	57.2	54.3	72
76	56.2	55.2	54.5	53.5	52.8	51.7	76
80	52.2	51.2	50.5	49.5	48.8	47.8	80
84	48.5	47.6	46.9	45.9	45.2	44.2	84
88	45.2	44.3	43.6	42.6	41.9	40.9	88
92	42.2	41.2	40.6	39.6	38.9	37.9	92
96		38.5	37.8	36.9	36.2	35.1	96
100			35.3	34.3	33.6	32.6	100
104				31.9	31.2	30.2	104
108					29.0	28.0	108
112					27.0	26.0	112
116						24.1	116

Load Chart of HJFJDB-5

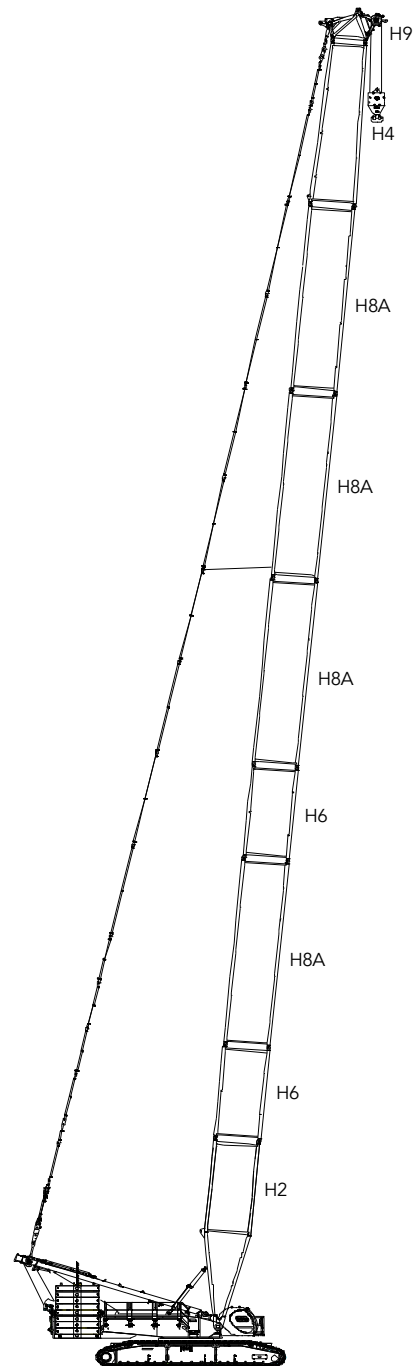
SCC4500A—HJFJDB-5 2/2							
Boom length: 96~126m, Jib length: 12m, Boom to jib angle: 20°, Superlift radius: 15m, Superlift counterweight: 250t, Rear counterweight: 140t, Carbody counterweight: 50t							
Radius(m)	96	102	108	114	120	126	Radius(m)
16	120*	115*	111*				16
18	118*	112*	108*	111*	108*	101*	18
20	114*	110*	106*	110*	106*	101*	20
22	112*	107*	103*	108*	104*	100*	22
24	109*	105*	101*	106*	102*	98.1*	24
26	106*	102*	98.3*	104*	100*	96.3*	26
28	104*	99.5*	96.1*	102*	98.0*	94.4*	28
30	101*	97.5*	93.7*	99.6*	96.0*	92.5*	30
32	99.2*	95.0*	91.4*	97.4*	94.0*	90.0*	32
34	96.4*	92.5*	89.5*	95.3*	92.0*	87.6*	34
36	94.6	90.8*	87.2*	93.8	89.9	84.6*	36
38	92.3	88.2	85.5	91.6	87.3	82.2	38
40	89.9	86.5	83.8	90.1	85.2	79.8	40
44	86.5	83.2	80.2	87.0	80.0	75.0	44
48	82.9	79.5	77.0	83.9	76.0	71.2	48
52	80.2	77.0	73.7	80.8	72.1	67.6	52
56	77.9	73.5	70.3	78.3	68.7	64.1	56
60	75.0	71.1	67.3	74.9	65.5	61.1	60
64	71.3	68.3	64.6	68.6	62.8	58.2	64
68	65.8	64.8	61.8	63.1	60.3	55.8	68
72	60.8	59.8	59.2	58.1	57.4	53.6	72
76	56.3	55.4	54.7	53.7	53.0	51.4	76
80	52.3	51.3	50.7	49.7	49.0	48.0	80
84	48.6	47.7	47.1	46.1	45.4	44.4	84
88	45.3	44.4	43.7	42.8	42.1	41.1	88
92	42.2	41.3	40.7	39.7	39.1	38.0	92
96		38.5	37.9	37.0	36.3	35.3	96
100			35.3	34.4	33.7	32.7	100
104				32.0	31.3	30.3	104
108					29.1	28.1	108
112					27.1	26.1	112
116						24.2	116

Boom Combination in H

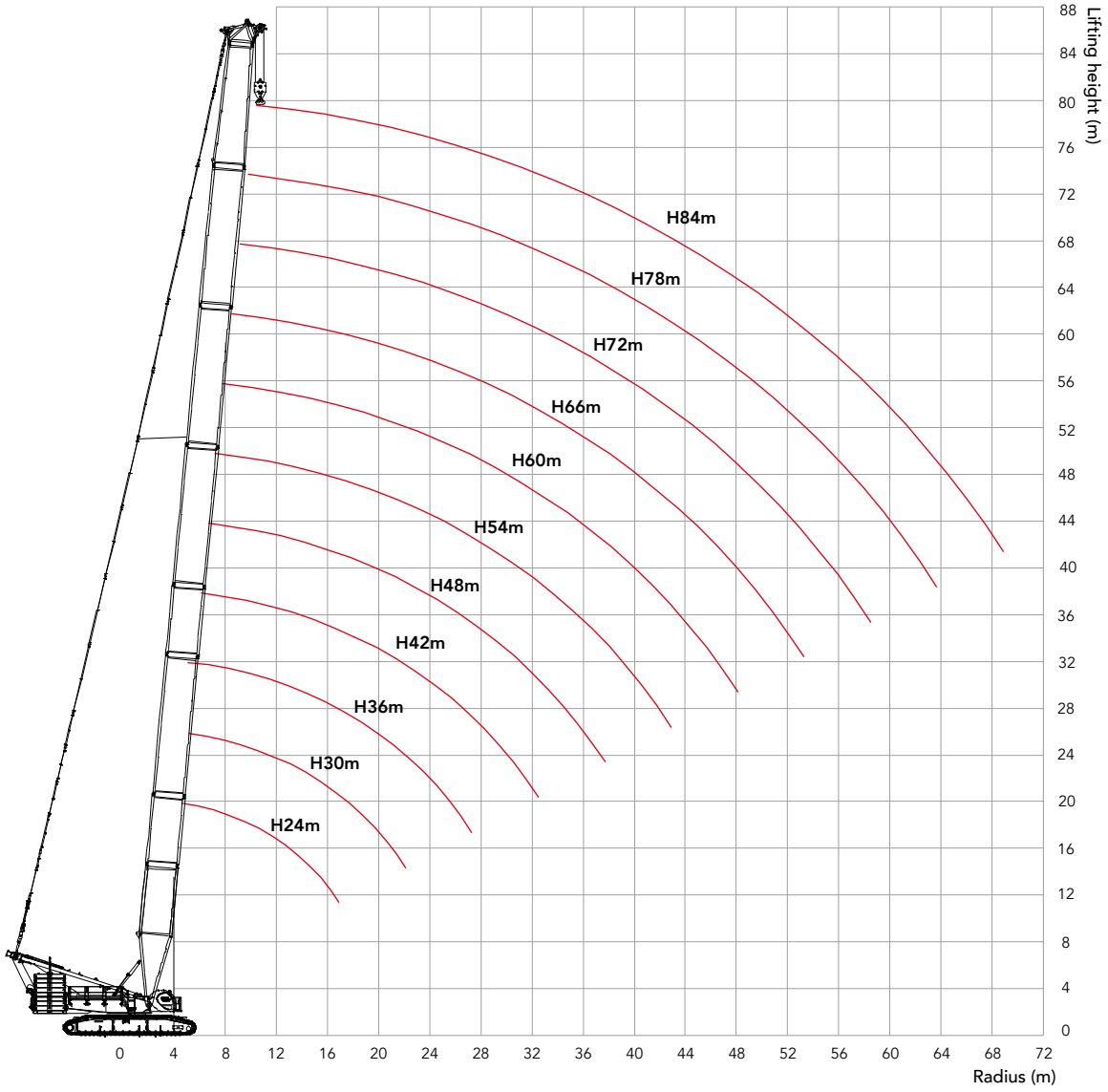
Boom Combination in H		
Boom length(m)	Boom insert	
	6m/ (H6)	12mA/(H8A)
24	-	-
30	1	-
36	2	-
42	1	1
48	2	1
54	1	2
60	2	2
66	1	3
72	2	3
78*	1	4
84*	2	4

Note: Combinations marked "*" mean when boom length is 78m, 84m or more, the mid-point suspension cable is must, otherwise, the boom may break.

Attention: if the boom length is 78m or more, the crane must boom up from side by side erection outrigger, otherwise the crane may tip over.



Working Radius in H



Unit: t

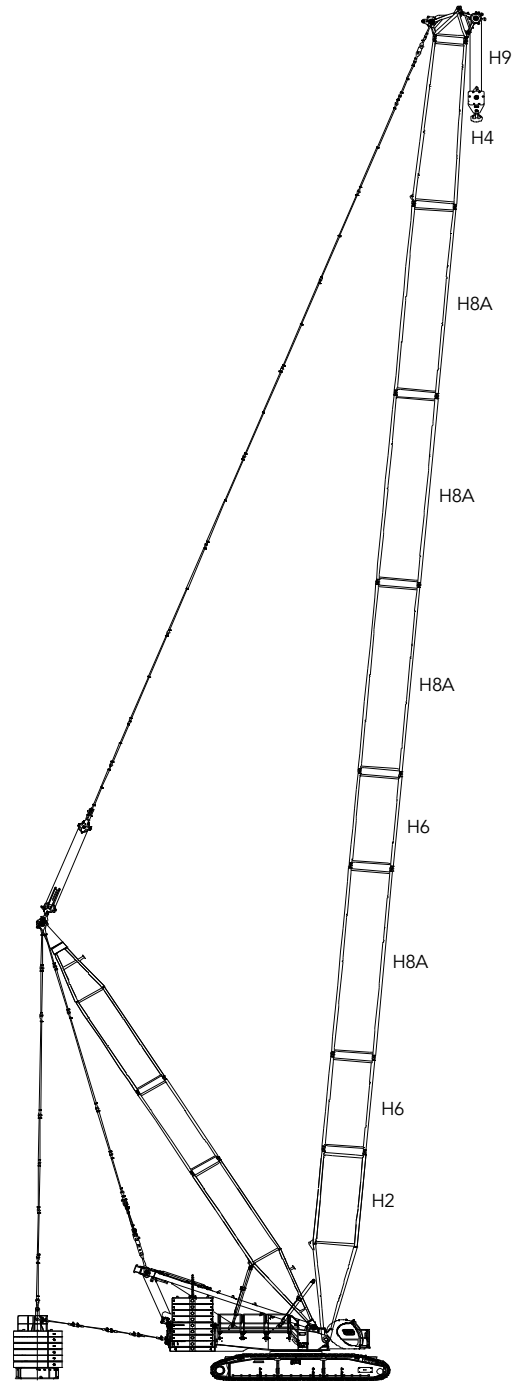
Load Chart of H Configuration

SCC4500A—H												
Boom length: 24~84m, Rear counterweight: 180t, Carbody counterweight: 50t												
Radius(m)	24	30	36	42	48	54	60	66	72	78	84	Radius(m)
6	450	450										6
7	426	422	418	414								7
8	369	366	363	354	335	317						8
9	325	323	320	307	292	278	266	254				9
10	290	288	283	271	259	248	237	228	218	210		10
11	262	260	252	242	232	223	214	206	198	191	184	11
12	236	235	227	218	210	202	195	188	181	174	168	12
14	188	187	186	182	176	170	164	159	153	148	144	14
16	155	155	154	153	150	146	141	137	133	129	124	16
18	131	131	131	130	129	127	124	120	116	113	109	18
20	113	113	113	113	112	111	109	106	103	100	97	20
22	99.3	99.6	99.1	98.8	98	97.2	96.3	95	92.2	89.5	86.8	22
24		88.3	88	87.7	86.9	86.3	85.3	84.5	83	80.6	78.1	24
26		79.1	78.8	78.6	77.8	77.2	76.3	75.5	74.5	73.1	70.8	26
28		71.3	71.1	70.9	70.2	69.6	68.7	67.9	67	66.1	64.4	28
30			64.5	64.4	63.7	63.2	62.3	61.5	60.6	59.7	58.7	30
32			58.9	58.8	58.2	57.6	56.7	56	55.1	54.2	53.2	32
34				53.9	53.3	52.7	51.9	51.2	50.3	49.4	48.5	34
36				49.6	49	48.5	47.7	47	46	45.2	44.2	36
38				45.8	45.2	44.7	43.9	43.2	42.3	41.5	40.5	38
40					41.9	41.4	40.6	39.9	39	38.1	37.2	40
44					36	35.6	34.8	34.1	33.2	32.5	31.5	44
48						30.8	30.1	29.4	28.5	27.8	26.8	48
52							26.1	25.5	24.6	23.8	22.9	52
56								22.1	21.3	20.5	19.6	56
60									18.4	17.6	16.7	60
64									15.8	15.1	14.2	64
68										12.9	12	68
72											10	72

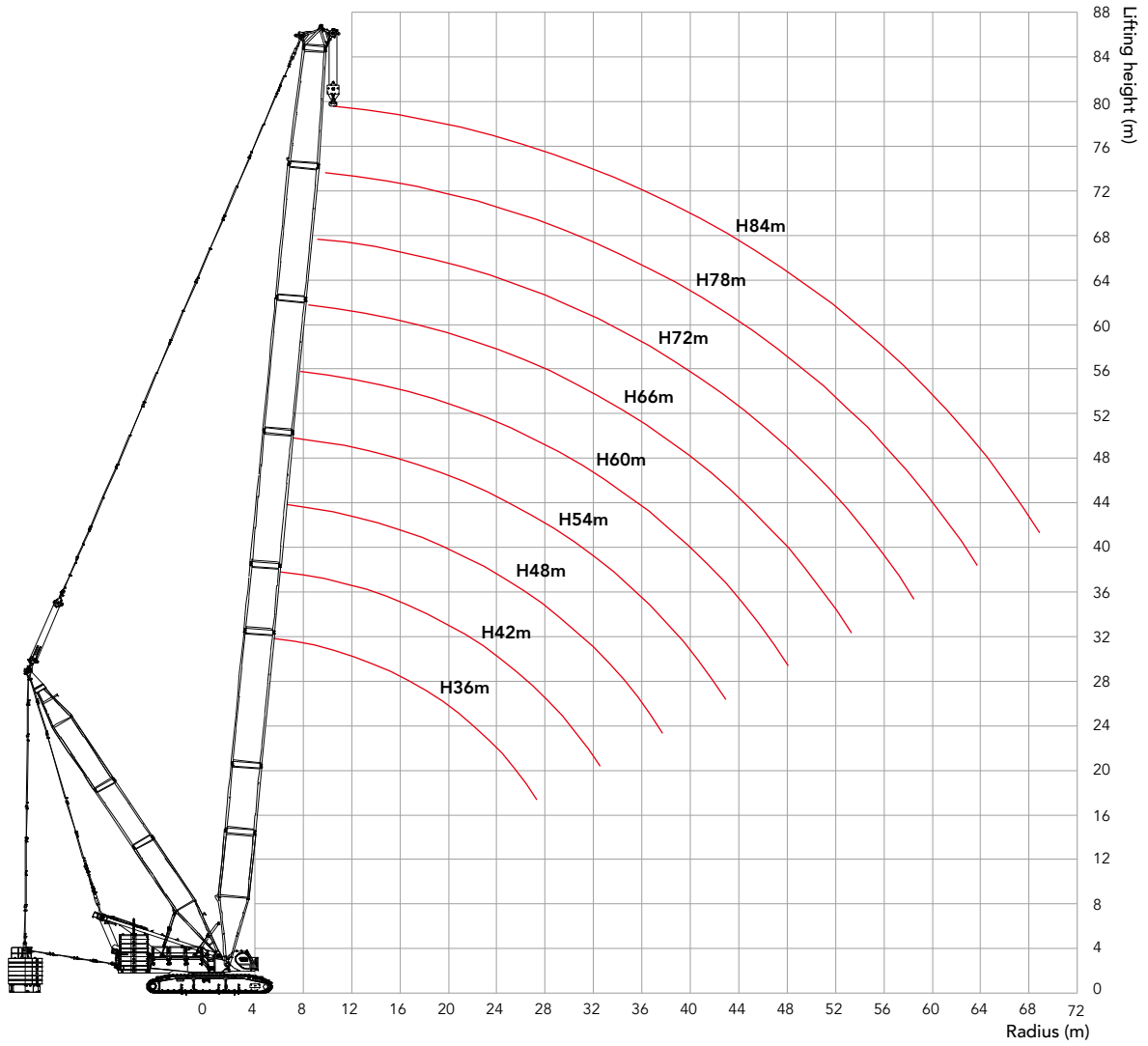
Boom Combination in HDB

Boom Combination in HDB

Boom length(m)	Boom insert	
	6m/(H6)	12mA/(H8A)
24	-	-
30	1	-
36	2	-
42	1	1
48	2	1
54	1	2
60	2	2
66	1	3
72	2	3
78	1	4
84	2	4



Working Radius in HDB



Load Chart of HDB

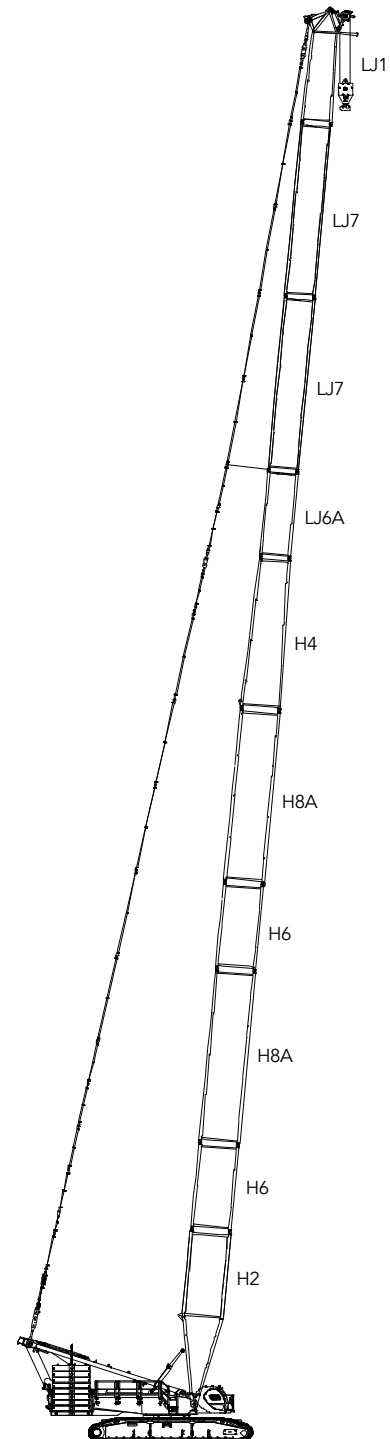
SCC4500A—HDB										
Boom length: 36~84m, Superlift radius: 15m, Superlift counterweight: 250t, Rear counterweight: 140t, Carbody counterweight: 50t										
Radius(m)	36	42	48	54	60	66	72	78	84	Radius(m)
7	450*	450*								7
8	450*	450*	435*	404*						8
9	450*	450*	437*	405*	375*	341*				9
10	450*	450*	436*	403*	376*	341*	307*	258*		10
11	450	450	438	404*	378*	341*	307*	258*	219*	11
12	450	450	437	402	378	343*	307*	258*	218*	12
14	429	418	415	403	379	342	307	258*	218*	14
16	365	363	362	360	358	344	307	258	219*	16
18	322	321	320	318	316	315	307	258	219*	18
20	288	287	286	285	283	282	280	257	218	20
22	261	260	258	257	256	255	253	252	218	22
24	238	237	236	234	233	232	231	229	217	24
26	218	217	216	215	214	213	212	210	209	26
28	201	200	200	199	198	196	195	194	193	28
30	187	186	185	184	183	182	181	180	179	30
32	174	173	173	172	171	170	169	168	166	32
34		162	161	161	160	159	158	157	156	34
36		152	152	151	150	149	148	147	146	36
38		143	143	142	141	140	139	138	137	38
40			135	134	133	132	131	130	129	40
44			121	120	119	119	118	117	116	44
48				109	108	107	106	105	104	48
52					98.3	97.6	96.7	95.9	94.8	52
56						89.3	88.4	87.6	86.6	56
60							81.2	80.4	79.4	60
64							74.8	74.1	73.1	64
68								68.5	67.6	68
72									62.6	72

Boom Combination in HJ

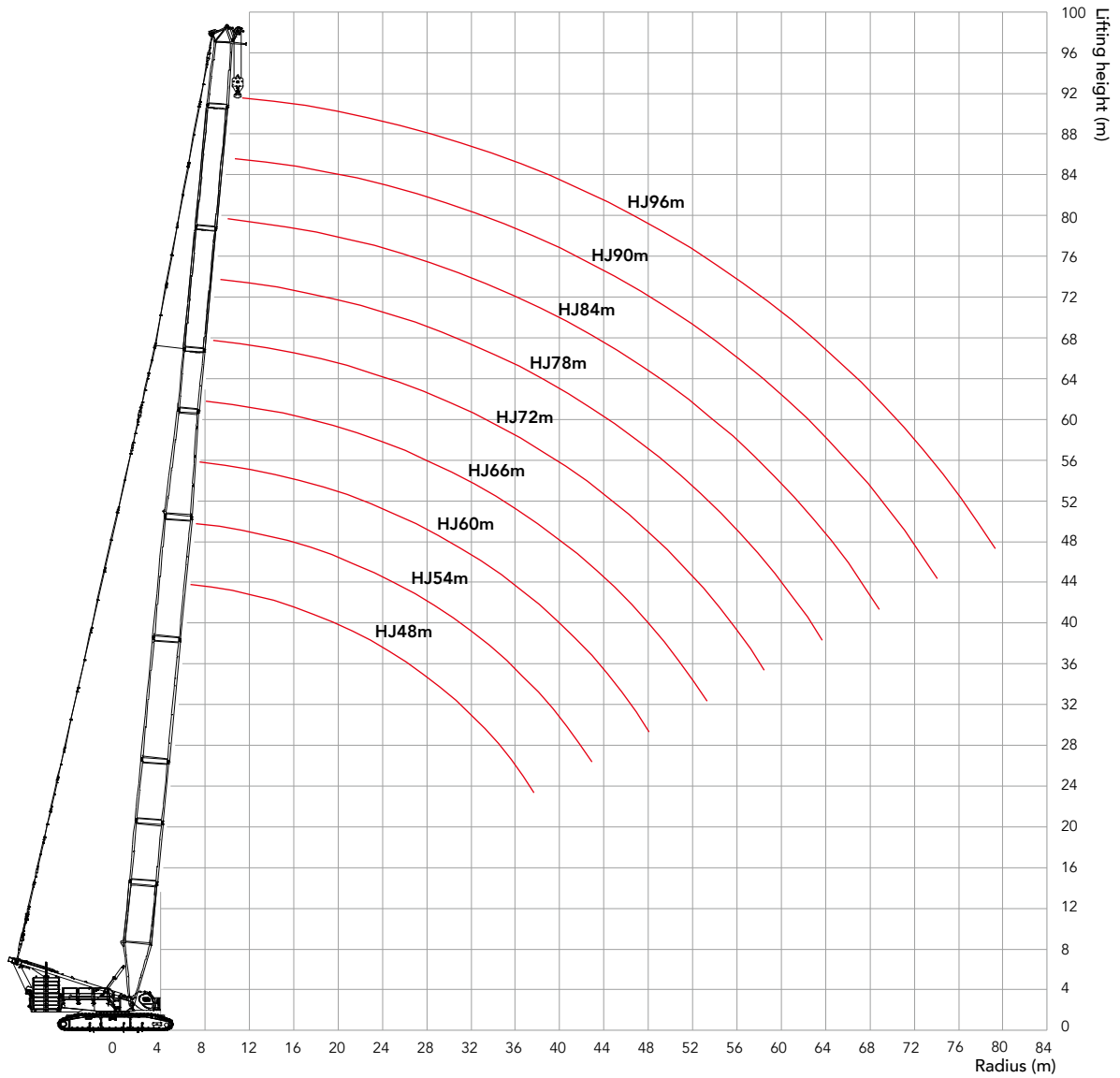
Boom Combination in HJ					
Boom length(m)	Boom insert			Jib insert	
	6m / (H6)	12mA / (H8A)	6mA / (LJ6A)	6mB / (LJ6B)	12m / (LJ7)
48	2	-	1	-	-
54	1	1	1	-	-
60	1	1	1	1	-
66	2	1	1	1	-
72*	2	1	1	-	1
78*	2	1	1	1	1
84*	1	2	1	1	1
90*	1	2	1	-	2
96*	2	2	1	-	2

Note: Combinations marked "*" mean when boom length is 72m or more, the mid-point suspension cable is must, otherwise, the boom may break.

Attention: if the boom length is 84m or more, the crane must boom up from side by side erection outrigger, otherwise the crane may tip over.



Working Radius in HJ



Unit: t

Load Chart of HJ

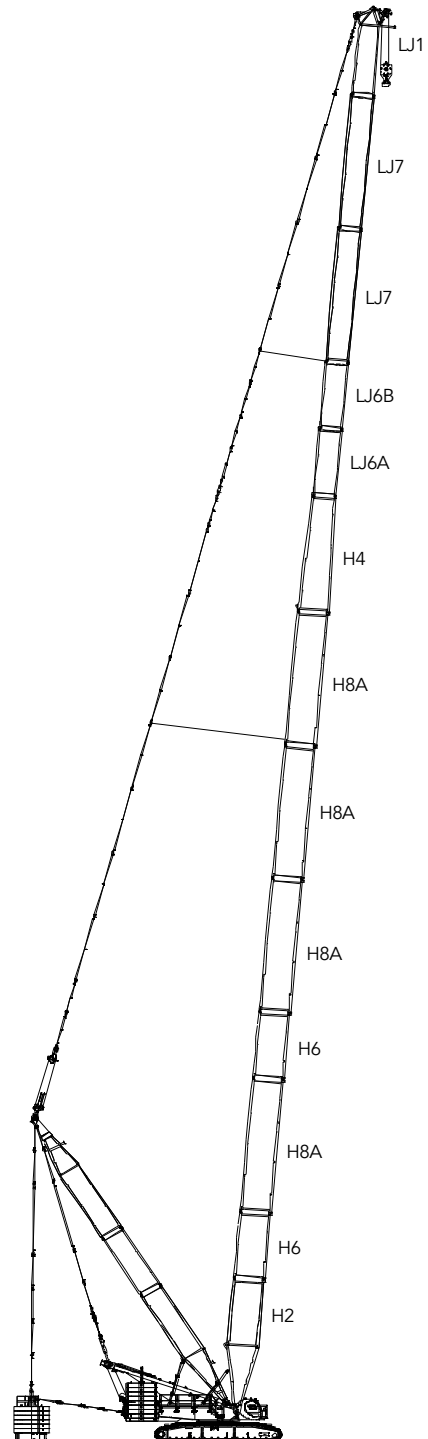
SCC4500A—HJ										
Boom length: 48~96m, Rear counterweight: 180t, Carbody counterweight: 50t										
Radius(m)	48	54	60	66	72	78	84	90	96	Radius(m)
8	226	224								8
9	228	225	216	213						9
10	228	226	218	214	195	162				10
11	231	227	219	211	196	159	163	134		11
12	215	207	200	193	187	158	163	133	132	12
14	180	174	169	164	159	154	149	129	129	14
16	155	150	146	142	138	134	130	126	123	16
18	133	131	128	124	121	118	115	112	109	18
20	115	114	114	110	108	105	102	100	97.1	20
22	101	101	100	99	97	94.7	92	90	87.4	22
24	90.1	89.4	89	88	87.7	85.7	83.3	81.6	79.1	24
26	80.9	80.2	79.9	78.9	78.7	78	75.9	74.3	72	26
28	73.2	72.5	72.2	71.3	71	70.5	69.4	68	65.9	28
30	66.6	66	65.7	64.7	64.5	64	63.2	62.5	60.5	30
32	60.9	60.3	60.1	59.1	59	58.5	57.6	57.3	55.7	32
34	56	55.4	55.2	54.3	54.1	53.6	52.8	52.4	51.4	34
36	51.7	51.1	50.9	50	49.8	49.3	48.5	48.2	47.2	36
38	47.8	47.3	47.1	46.2	46	45.6	44.7	44.4	43.4	38
40	44.4	43.9	43.7	42.8	42.6	42.2	41.4	41.1	40.1	40
44		38.1	37.9	37	36.9	36.4	35.6	35.3	34.3	44
48		33.2	33.1	32.2	32.1	31.7	30.9	30.6	29.6	48
52			29	28.2	28.1	27.7	26.9	26.6	25.7	52
56				24.8	24.7	24.3	23.5	23.3	22.3	56
60					21.8	21.4	20.6	20.4	19.4	60
64					19.2	18.9	18.1	17.8	16.9	64
68						16.6	15.8	15.6	14.6	68
72							13.9	13.6	12.5	72
76								11.9	8.7	76
80								10.3	4.1	80

Boom Combination in HJDB

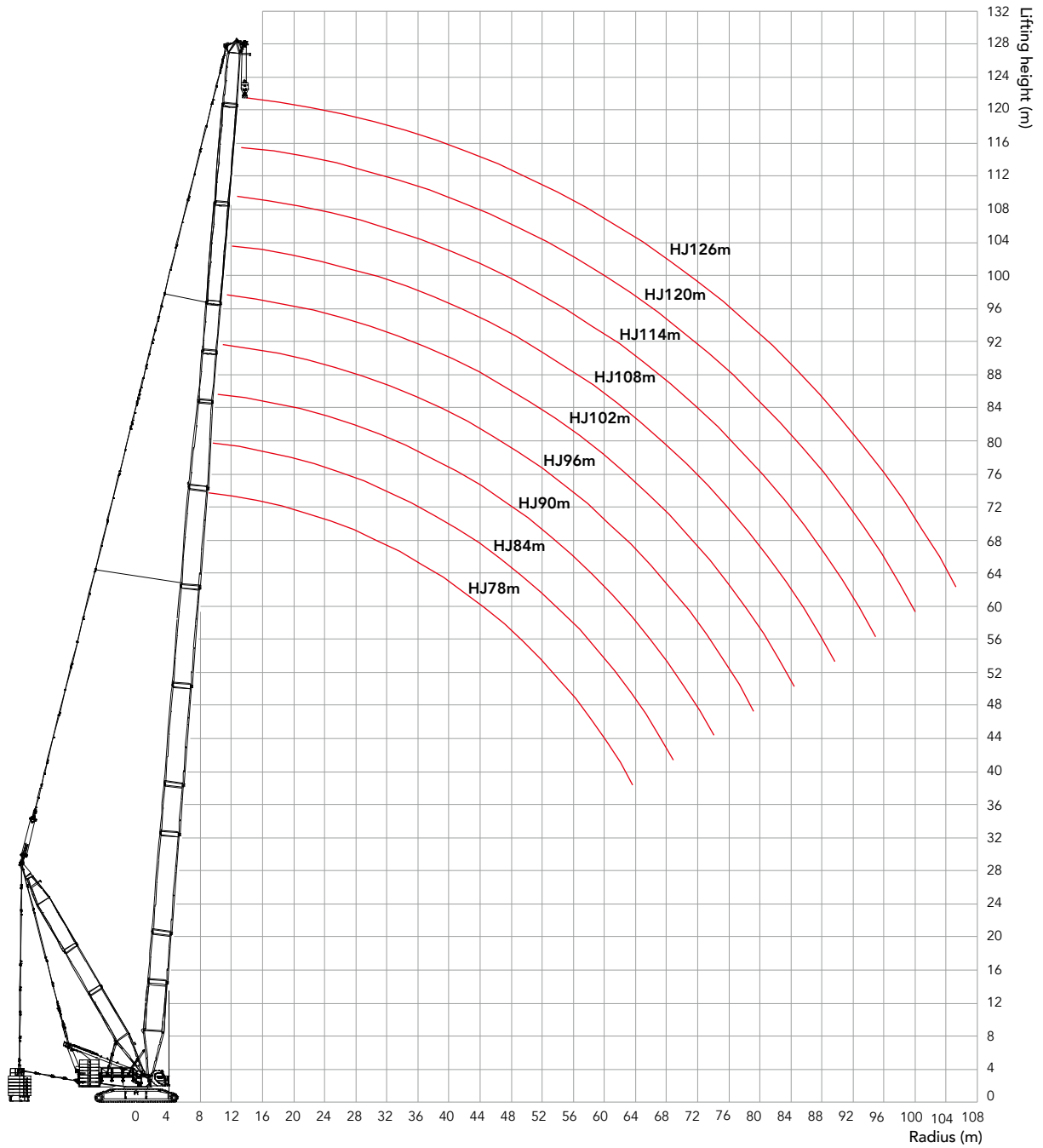
Boom Combination in HJDB					
Boom length(m)	Boom insert		Jib insert		
	6m/(H6)	12mA/(H8A)	6mA/(LJ6A)	6mB/(LJ6B)	12m/(LJ7)
78	1	3	1	-	-
84	2	3	1	-	-
90*	1	4	1	-	-
96*	2	4	1	-	-
102*	2	4	1	1	-
108*	2	4	1	-	1
114*	2	4	1	1	1
120*	2	4	1	2	1
126*	2	4	1	1	2

Note: Combinations marked "*" mean the mid-point suspension cable is must, otherwise, the boom may break.

The use of the mid-point suspension cable must be strictly in accordance to the instructions.



Working Radius in HJDB



Load Chart of HJDB

SCC4500A—HJDB										
Boom length: 78~126m, Superlift radius: 15m, Superlift counterweight: 250t, Rear counterweight: 140t, Carbody counterweight: 50t										
Radius(m)	78	84	90	96	102	108	114	120	126	Radius(m)
10	215*									10
11	216*	212*	188*							11
12	216*	211*	187*	162*	140*					12
14	218*	213*	188*	162*	140*	123*	107*	92.7*		14
16	219*	214*	187*	163*	140*	123*	107*	92.5*	80.4*	16
18	221*	216*	184*	163*	140*	123*	106*	92.2*	79.6*	18
20	222	218	179*	162*	140*	123*	106*	91.8*	78.7*	20
22	224	219	176*	162*	140*	122*	107*	90.9*	77.9*	22
24	226	218	172	162	141*	122*	106*	90.0*	77.0*	24
26	212	211	167	163	140*	122*	106*	89.1*	76.1*	26
28	196	194	161	162	140	122*	105*	88.1*	75.2*	28
30	182	180	152	162	140	122	104*	87.2*	74.3*	30
32	169	168	144	162	139	121	103*	86.2*	73.4*	32
34	158	157	137	155	134	120	103*	85.3*	72.4*	34
36	149	147	131	145	128	119	102	84.3*	71.5*	36
38	140	139	126	137	122	118	101	83.3*	70.6*	38
40	132	131	121	129	118	117	99.7	82.3*	69.7*	40
44	118	117	111	115	108	113	97.9	80.4	67.9*	44
48	107	106	104	104	101	103	96.1	77.4	65.8*	48
52	97.5	96.4	95.6	94.5	94.0	93.7	93.1	73.0	62.0	52
56	89.2	88.2	87.3	86.3	85.8	85.5	85.0	69.2	58.6	56
60	82.0	81.0	80.2	79.2	78.7	78.5	77.9	66.0	55.8	60
64	75.7	74.8	73.9	72.9	72.5	72.2	71.7	62.8	53.0	64
68	70.1	69.2	68.4	67.4	66.9	66.7	66.2	60.5	50.7	68
72		64.2	63.4	62.4	62.0	61.8	61.3	58.3	48.8	72
76			59.0	58.0	57.6	57.4	56.9	56.1	46.9	76
80			55.0	54.0	53.6	53.5	53.0	52.4	45.4	80
84				50.4	50.0	49.8	49.4	48.8	44.0	84
88					46.7	46.6	46.1	45.6	42.9	88
92						43.5	43.1	42.6	42.1	92
96							40.3	39.8	39.5	96
100							37.8	37.3	37.0	100
104								34.9	34.7	104
108									32.5	108

Unit: t

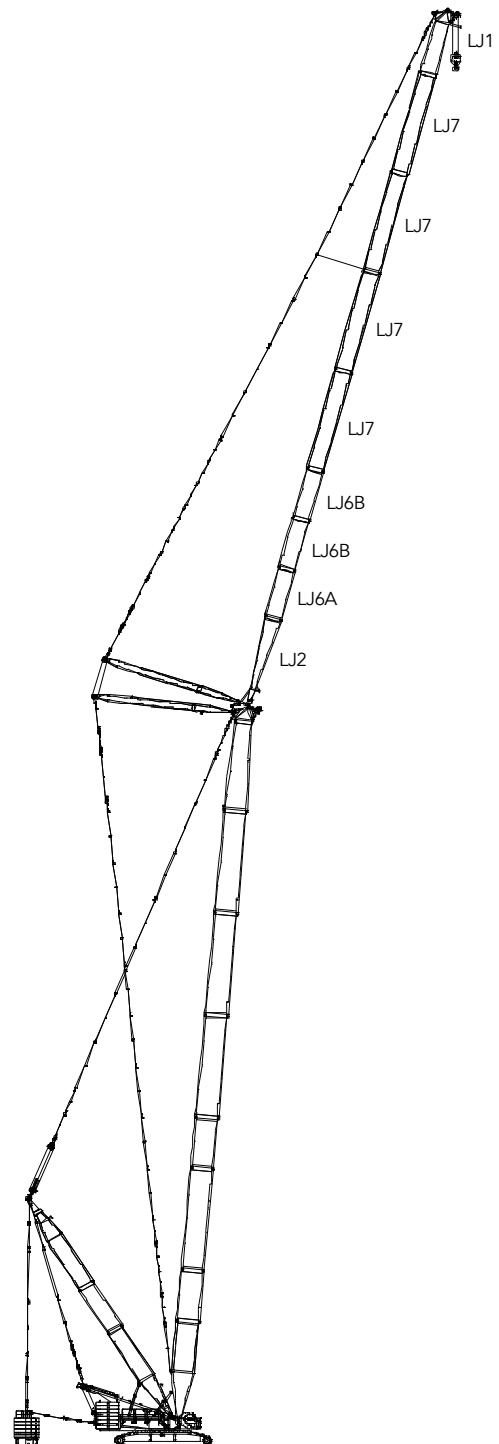
Boom Combination in LJ(DB)

Boom Combination in LJ(DB)				
Boom length(m)	Boom insert			Boom length(m) (m)
	6 mA	6mB	12m	
24	1	-	-	36~66(LJ) 36~84(LJDB) 54m+72/60+66(LJ) longest boom+ longest jib 85° 75° 65°
30	1	1	-	
36	1	2	-	
42	1	1	1	
48	1	2	1	
54	1	1	2	
60	1	2	2	
66*	1	1	3	
72*	1	2	3	
78*	1	1	4	
84*	1	2	4	

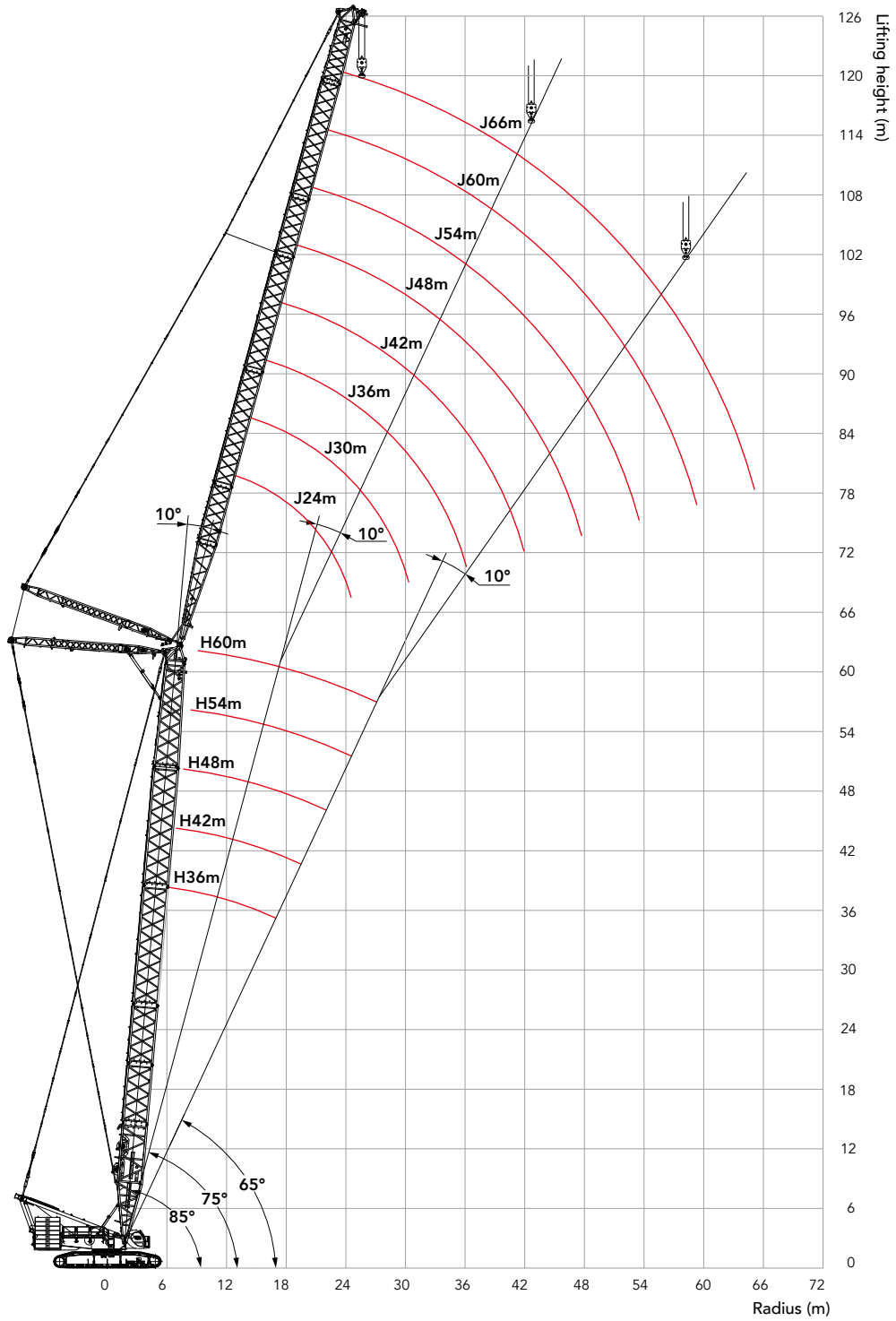
Jib length in LJ: 24m~72m; Jib length in LJDB: 24m~84m

Note: Combinations marked***mean for jib length 66m~84m, the mid-point suspension cable is must, otherwise, the boom may break.

Attention: In LJ configuration, the crane's booming up must be strictly in accordance to the instructions, otherwise the crane may tip over !



Working Radius in LJ



Unit: t

Load Chart of LJ

SCC4500A—LJ 1/5										
Boom length: 36m, Boom angle: 85°, Jib length: 24m~72m, Rear counterweight: 180t, Carbody counterweight: 50t										
Radius(m)	24	30	36	42	48	54	60	66	72	Radius(m)
14	177									14
16	154	150	145							16
18	133	133	129	125						18
20	117	116	115	113	110					20
22	104	103	102	101	99.7	97.2	94.6			22
24	93.1	92.6	91.8	91	90.2	89	86.6	83.3		24
26	84.3	83.9	83.2	82.5	81.7	81	79.8	77.8	70.1	26
28		76.6	75.9	75.3	74.6	73.9	73.1	72	69.3	28
30		70.3	69.8	69.2	68.5	67.9	67.1	66.5	65.1	30
32		64.9	64.4	63.9	63.2	62.6	61.9	61.3	60.5	32
34			59.8	59.3	58.6	58.1	57.3	56.7	56	34
36			55.7	55.2	54.6	54	53.3	52.8	52	36
38			52	51.6	51	50.5	49.8	49.2	48.5	38
40				48.4	47.8	47.3	46.6	46.1	45.4	40
44					42.3	41.9	41.2	40.7	40	44
48					37.8	37.4	36.7	36.2	35.6	48
52						33.6	33	32.5	31.8	52
56							29.8	29.3	28.7	56
60							27	26.5	25.9	60
64								24.1	23.5	64
68									21.4	68

Load Chart of LJ

SCC4500A—LJ 2/5										
Boom length: 42m, Boom angle: 85°, Jib length: 24m~72m, Rear counterweight: 180t, Carbody counterweight: 50t										
Radius (m)	24	30	36	42	48	54	60	66	72	Radius (m)
14	170									14
16	149	145								16
18	132	129	125	121						18
20	116	115	112	109	106					20
22	103	102	101	99.5	96.8	94.4				22
24	92.5	91.8	91.1	90.3	88.7	86.5	84.2			24
26	83.7	83.3	82.5	81.8	81	79.7	77.6	75.6	65.7	26
28	76.3	76	75.4	74.7	74	73.3	71.8	70	64.2	28
30		69.8	69.3	68.7	67.9	67.3	66.5	65.1	62.7	30
32		64.5	64	63.4	62.7	62.1	61.4	60.7	59	32
34			59.4	58.8	58.2	57.6	56.9	56.2	55.2	34
36			55.3	54.8	54.2	53.6	52.9	52.3	51.6	36
38			51.7	51.2	50.6	50.1	49.4	48.8	48.1	38
40				48	47.4	46.9	46.2	45.7	45	40
44				42.5	42	41.5	40.9	40.3	39.6	44
48					37.5	37.1	36.4	35.9	35.2	48
52						33.3	32.7	32.2	31.5	52
56							29.5	29	28.4	56
60							26.7	26.3	25.7	60
64								23.9	23.3	64
68									21.2	68

Unit: t

Load Chart of LJ

SCC4500A—LJ 3/5										
Boom length: 48m, Boom angle: 85°, Jib length: 24m~72m, Rear counterweight: 180t, Carbody counterweight: 50t										
Radius (m)	24	30	36	42	48	54	60	66	72	Radius (m)
14	164									14
16	144	140								16
18	128	124	121							18
20	115	112	109	106	103					20
22	102	101	99.2	96.6	94	91.6				22
24	91.8	91.2	90.4	88.6	86.2	84	81.3			24
26	83.2	82.7	81.9	81.2	79.5	77.5	75.4	69.6		26
28	75.9	75.5	74.8	74.2	73.4	71.8	69.9	67.5	59.4	28
30		69.4	68.8	68.2	67.4	66.8	65	63.3	58	30
32		64.1	63.5	63	62.2	61.6	60.7	59.1	56.3	32
34		59.4	59	58.4	57.7	57.2	56.4	55.3	53.7	34
36			54.9	54.4	53.8	53.2	52.5	51.9	50.4	36
38			51.3	50.9	50.3	49.7	49	48.4	47.4	38
40				47.7	47.1	46.6	45.9	45.3	44.6	40
44				42.2	41.7	41.2	40.6	40	39.3	44
48					37.2	36.8	36.2	35.6	34.9	48
52						33.1	32.5	31.9	31.3	52
56							29.3	28.8	28.1	56
60							26.5	26.1	25.4	60
64								23.7	23.1	64
68									21	68
72									19.1	72

Load Chart of LJ

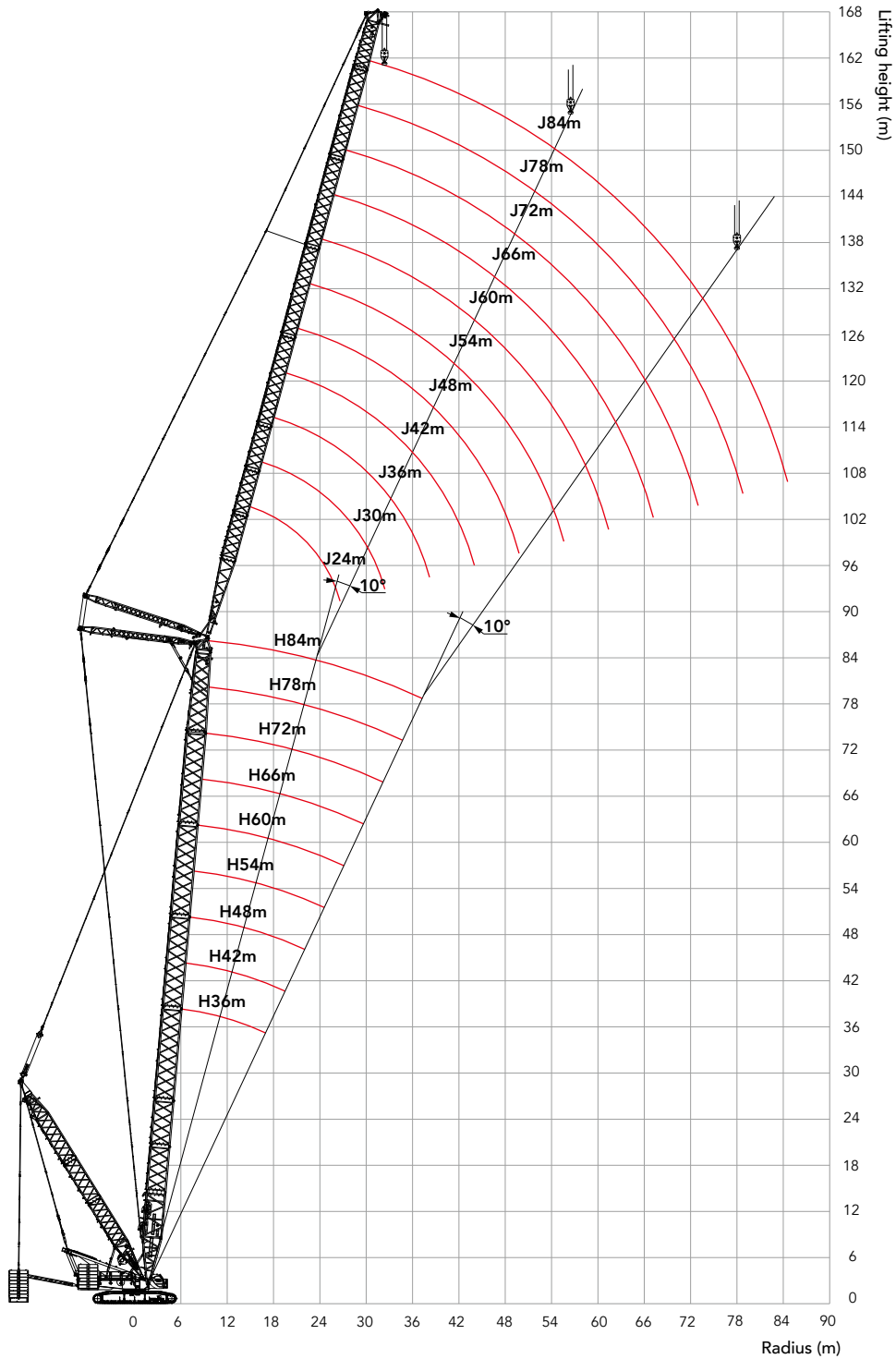
SCC4500A—LJ 4/5										
Boom length: 54m, Boom angle: 85°, Jib length: 24m~72m, Rear counterweight: 180t, Carbody counterweight: 50t										
Radius (m)	24	30	36	42	48	54	60	66	72	Radius (m)
16	139	135								16
18	124	120	117							18
20	112	109	106	103						20
22	101	98.9	96.2	93.7	91.1					22
24	91	90.4	88.2	86	83.6	81.5	74.4			24
26	82.5	82	81.2	79.3	77.1	75.2	72.1	64.1		26
28	75.3	74.9	74.2	73.5	71.5	69.8	67.8	62.2	54.9	28
30		68.8	68.2	67.5	66.6	64.9	63.1	60.2	53.5	30
32		63.6	63	62.4	61.7	60.7	58.9	57.4	51.9	32
34		58.9	58.5	57.9	57.2	56.6	55.2	53.7	50.3	34
36			54.5	54	53.3	52.7	51.9	50.5	48.3	36
38			50.9	50.5	49.8	49.2	48.5	47.5	46	38
40				47.3	46.7	46.2	45.4	44.8	43.3	40
44				41.9	41.3	40.8	40.2	39.6	38.7	44
48					36.9	36.5	35.8	35.3	34.6	48
52						32.8	32.1	31.6	30.9	52
56						29.6	29	28.5	27.8	56
60							26.3	25.8	25.2	60
64								23.4	22.8	64
68									20.8	68
72									18.9	72

Unit: t

Load Chart of LJ

SCC4500A—LJ 5/5									
Boom length: 60m, Boom angle: 85°, Jib length: 24m~66m, Rear counterweight: 180t, Carbody counterweight: 50t									
Radius (m)	24	30	36	42	48	54	60	66	Radius (m)
16	134								16
18	120	116	113						18
20	108	105	102	99.4					20
22	98.5	95.8	93.2	90.7	88.2				22
24	90.3	88	85.5	83.3	81	76.5			24
26	81.8	81.2	79	77	74.8	72.9	65.5	58.7	26
28	74.7	74.2	73.3	71.4	69.4	67.6	63.3	56.8	28
30		68.2	67.6	66.6	64.7	63	60.6	55	30
32		63	62.4	61.8	60.5	58.9	57.2	52.8	32
34		58.5	58	57.4	56.7	55.2	53.6	50.9	34
36			54	53.5	52.8	51.9	50.3	48.7	36
38			50.5	50	49.3	48.8	47.4	46.1	38
40			47.3	46.9	46.3	45.7	44.7	43.5	40
44				41.5	41	40.5	39.8	38.9	44
48					36.6	36.1	35.4	34.9	48
52						32.4	31.8	31.3	52
56						29.3	28.7	28.2	56
60							26	25.5	60
64								22.9	64
68									68
72									72

Working Radius in LJDB



Unit: t

Load Chart of LJDB

SCC4500A—LJDB 1/9												
Boom length: 36m, Boom angle: 85°, Jib length: 24m~84m, Superlift radius: 15m, Superlift counterweight: 250t, Rear counterweight: 140t, Carbody counterweight: 50t												
Radius(m)	24	30	36	42	48	54	60	66	72	78	84	Radius(m)
14	233*											14
16	229*	212*	189*									16
18	224*	210*	189*	156*								18
20	210*	200*	188*	156*	134*							20
22	194	188	177*	156*	132*	116*	99*					22
24	193	188	174	156*	130*	114*	97.4*	84.2*				24
26	175	178	162	151*	127*	111*	95.2*	82.8*	70.4*			26
28		163	152	143*	126*	107*	93*	81*	69.8*	59.5*		28
30		149	142	136*	125*	104*	90.2*	79.2*	68.7*	59.1*	49.7*	30
32		133	135	130*	124*	102*	87.5*	77.4*	67.1*	58.6*	49.2*	32
34			129	124	119*	101*	84.7*	75.5*	65.9*	57.9*	48.8*	34
36			118	119*	114*	101*	83*	73.3*	64.3*	56.9*	48.4*	36
38			107	111*	109*	96.9*	82.3*	71*	62.7*	55.8*	48*	38
40				102*	105*	92.4*	81.1*	68.8*	60.9*	54.5*	47.6*	40
44					90.8*	84.8*	73.8*	64*	57.5*	52.1*	45.8*	44
48					82.1*	77.3*	67.2*	59.3*	54.2*	49.2*	43.7*	48
52						70.8*	61.3*	54.7*	50.2*	46.4*	41.6*	52
56							55.9*	49.9*	46.7*	43.4*	39.4*	56
60							51.7*	45.6*	43*	40.5*	36.4*	60
64								41.4*	39.6*	37.8*	33*	64
68									36.5*	35.1*	29.8*	68
72										32.4*	26.6*	72
76										29.7*	23.7*	76
80											21.3*	80

Load Chart of LJDB

SCC4500A—LJDB 2/9												
Boom length: 42m, Boom angle: 85°, Jib length: 24m~84m, Superlift radius: 15m, Superlift counterweight: 250t, Rear counterweight: 140t, Carbody counterweight: 50t												
Radius(m)	24	30	36	42	48	54	60	66	72	78	84	Radius(m)
14	229*											14
16	227*	205*										16
18	222*	205*	174*	147*								18
20	208*	197*	174*	144*	129*							20
22	194	185*	173*	143*	126*	109*						22
24	188	175	167*	143*	122*	106*	91.2*					24
26	173	165	157*	142*	117*	103*	88.8*	77.7*	66.4*			26
28	163	156	150*	140*	116*	99.2*	86.8*	76.1*	66.1*	56.2*		28
30		148	142*	137*	116*	96*	84.3*	74.5*	64.7*	55.8*	47*	30
32		139*	136*	130*	115*	95.5*	81.8*	72.4*	63.2*	55.5*	46.7*	32
34			130*	122*	113*	94.8*	78.8*	70.3*	61.8*	54.9*	46.3*	34
36			121*	116*	108*	94*	78.3*	68.3*	60.4*	53.7*	46*	36
38			111*	109*	102*	93.3*	77.7*	66.2*	58.6*	52.4*	45.7*	38
40				102*	96.9*	90.8*	77.1*	64.1*	57.2*	51.2*	45.1*	40
44				90.1*	87.2*	82.4*	74.4*	63.1*	53.7*	48.5*	43.2*	44
48					77.7*	74.7*	67.6*	58.1*	49.9*	45.8*	40.9*	48
52						67.8*	61.9*	52.5*	46.2*	42.9*	38.9*	52
56							56.3*	47.9*	42.6*	39.9*	36.4*	56
60							51.8*	43.8*	39.2*	37.2*	34*	60
64								40*	35.9*	34.3*	31.8*	64
68									32.7*	31.6*	29.5*	68
72										28.9*	27*	72
76										26.6*	24.2*	76
80											21.8*	80

Unit: t

Load Chart of LJDB

SCC4500A—LJDB 3/9												
Boom length: 48m, Boom angle: 85°, Jib length: 24m~84m, Superlift radius:15m, Superlift counterweight: 250t, Rear counterweight: 140t, Carbody counterweight: 50t												
Radius(m)	24	30	36	42	48	54	60	66	72	78	84	Radius(m)
14	224*											14
16	221*	190*										16
18	216*	190*	167*									18
20	202*	190*	159*	138*	119*							20
22	190*	181*	156*	133*	116*	100*						22
24	179*	171*	154*	130*	112*	97.2*	84.9*					24
26	169*	161*	152*	129*	107*	94.6*	82.7*	72.5*				26
28	161*	153*	143*	127*	107*	91.4*	80.5*	71.1*	61.7*	52.7*		28
30		144*	134*	125*	106*	89.2*	78.3*	69.2*	60.7*	52.5*	44.3*	30
32		133*	126*	118*	105*	88.5*	75.5*	67.3*	59.4*	52.2*	44*	32
34		124*	118*	111*	103*	87.9*	73.7*	65.4*	57.8*	51.4*	43.8*	34
36			109*	105*	98.2*	87.2*	73.2*	63.2*	56.1*	50.3*	43.5*	36
38			102*	98.1*	93.3*	86.3*	72.7*	60.9*	54.5*	49.2*	43.2*	38
40				92.1*	88.4*	82.9*	72.1*	60.4*	52.9*	47.8*	42.3*	40
44				81.1*	78.7*	75*	70.4*	59.5*	49.7*	45*	40.3*	44
48					70*	67.8*	64.4*	58.3*	48.9*	42.3*	38*	48
52						60.8*	58.5*	52.9*	44.8*	39.4*	35.8*	52
56							53.2*	48.4*	40.7*	36.5*	33.3*	56
60							48.1*	44.1*	36.7*	33.7*	31.1*	60
64								40.1*	33.1*	30.8*	28.8*	64
68									29.9*	28.1*	26.7*	68
72									27*	25.6*	24.5*	72
76										23.4*	22.6*	76
80											20.6*	80

Load Chart of LJDB

SCC4500A—LJDB 4/9												
Boom length: 54m, Boom angle: 85°, Jib length: 24m~84m, Superlift radius:15m, Superlift counterweight: 250t, Rear counterweight: 140t, Carbody counterweight: 50t												
Radius(m)	24	30	36	42	48	54	60	66	72	78	84	Radius(m)
16	204*	182*										16
18	201*	173*	150*									18
20	195*	168*	144*	126*								20
22	184*	164*	139*	121*	106*							22
24	174*	159*	138*	117*	102*	90.1*	78.7*					24
26	162*	151*	135*	116*	98.5*	87.1*	76.8*	67.6*				26
28	150*	141*	131*	115*	97.7*	84.2*	74.7*	66.3*	57.8*			28
30		130*	123*	113*	96.8*	82.2*	72.2*	64.6*	56.7*	49.1*	41.5*	30
32		122*	115*	108*	95.6*	81.6*	69.7*	62.5*	55.2*	48.9*	41.3*	32
34		112*	108*	102*	94.4*	80.8*	68.5*	60.7*	54.1*	48.2*	41.1*	34
36			100*	95.7*	90.2*	80.1*	68*	58.6*	52.3*	47.2*	40.9*	36
38			93.6*	90.1*	85.6*	79.2*	67.4*	57*	50.7*	45.9*	40.7*	38
40				84.5*	80.9*	76*	66.9*	56.6*	49.2*	44.6*	39.8*	40
44				74.6*	72*	69*	64.9*	55.7*	47.1*	41.8*	37.6*	44
48					64.4*	62.2*	59.1*	54.7*	46.3*	39*	35.4*	48
52						55.6*	54*	51.2*	45.1*	38.3*	33*	52
56						50.2*	48.9*	46.9*	40.8*	34.1*	30.7*	56
60							44.1*	42.6*	36.9*	30.5*	28.6*	60
64								39*	33.2*	28*	26.2*	64
68									30.2*	25.5*	24.1*	68
72									27.4*	23.1*	22.2*	72
76										21*	20.2*	76
80											18.5*	80

Unit: t

Load Chart of LJDB

SCC4500A—LJDB 5/9												
Boom length: 60m, Boom angle: 85°, Jib length: 24m~84m, Superlift radius:15m, Superlift counterweight: 250t, Rear counterweight: 140t, Carbody counterweight: 50t												
Radius(m)	24	30	36	42	48	54	60	66	72	78	84	Radius(m)
16	187*											16
18	175*	155*	135*									18
20	170*	148*	130*	114*								20
22	164*	144*	125*	110*	97.1*							22
24	158*	140*	122*	105*	93.2*	82.9*						24
26	146*	136*	120*	104*	89.8*	80.2*	70.9*	62.8*				26
28	135*	127*	117*	103*	88.6*	77.4*	69*	61.3*	53.6*			28
30		119*	111*	101*	87.5*	75.2*	66.7*	59.7*	52.6*	45.8*		30
32		110*	104*	97.7*	86.3*	74.6*	64.3*	57.7*	51.6*	45.6*	38.5*	32
34		102*	97.5*	92.2*	85*	73.7*	63.2*	56.1*	49.9*	44.7*	38.3*	34
36			91.2*	86.8*	81.7*	72.8*	62.6*	53.8*	48.5*	43.8*	38.2*	36
38			85.2*	82.1*	77.8*	71.9*	62*	53.2*	46.8*	42.4*	37.8*	38
40			79.6*	77*	73.5*	69.5*	61.4*	52.7*	45.1*	41.2*	36.8*	40
44				67.9*	65.6*	62.8*	59.1*	51.8*	44.1*	38.5*	34.7*	44
48					58.1*	56.4*	54*	50.8*	43.3*	36.6*	32.7*	48
52						50.6*	48.7*	46.6*	42.5*	36*	30.2*	52
56						45.6*	44.3*	42.5*	40.4*	34.4*	28.1*	56
60							40*	38.5*	36.9*	31*	25.8*	60
64								35.3*	33.6*	27.6*	23.7*	64
68									30.4*	24.4*	21.7*	68
72									27.6*	21.8*	19.7*	72
76										19.3*	17.8*	76
80											16.2*	80
84											14.7*	84

Load Chart of LJDB

SCC4500A—LJDB 6/9												
Boom length: 66m, Boom angle: 85°, Jib length: 24m~84m, Superlift radius:15m, Superlift counterweight: 250t, Rear counterweight: 140t, Carbody counterweight: 50t												
Radius(m)	24	30	36	42	48	54	60	66	72	78	84	Radius(m)
16	166*											16
18	156*	139*										18
20	146*	131*	117*	103*								20
22	140*	124*	111*	99.6*	88.7*							22
24	135*	120*	106*	95.6*	85.6*	76.1*						24
26	130*	116*	103*	90.9*	81.9*	73.5*	65.3*					26
28	123*	113*	101*	89*	78.6*	70.9*	63.6*	56.8*	49.5*			28
30	115*	107*	98*	87.2*	76.5*	68.2*	61.4*	55.1*	49.2*	42.3*		30
32		100*	94*	85.3*	75.2*	65.6*	59.2*	53.5*	47.9*	42.1*	35.7*	32
34		93.6*	88.7*	83.4*	74*	64.8*	56.9*	51.7*	46.3*	41.8*	35.5*	34
36			83.1*	78.8*	72.7*	63.9*	55.8*	49.8*	45*	40.7*	35.4*	36
38			77.8*	74.6*	70.2*	63*	55.2*	47.9*	43.4*	39.3*	35*	38
40			73.4*	70*	66.7*	62*	54.5*	47.2*	41.8*	38.2*	34.1*	40
44				62*	59.6*	57.1*	53.2*	46.2*	39.7*	35.5*	32.2*	44
48					53.3*	51.5*	48.8*	45.2*	38.9*	33.2*	30.1*	48
52						46.2*	44.6*	42.3*	38.2*	32.6*	28*	52
56						41.7*	40.2*	38.5*	36.5*	31.9*	26.9*	56
60							36.3*	35.1*	33.6*	30.8*	24.9*	60
64								32.1*	30.7*	27.6*	21.9*	64
68								29.3*	28.2*	24.6*	19.7*	68
72									25.8*	22*	17.9*	72
76										19.6*	16.1*	76
80											14.6*	80
84											13.2*	84

Unit: t

Load Chart of LJDB

SCC4500A—LJDB 7/9												
Boom length: 72m, Boom angle: 85°, Jib length: 24m~84m, Superlift radius:15m, Superlift counterweight: 250t, Rear counterweight: 140t, Carbody counterweight: 50t												
Radius(m)	24	30	36	42	48	54	60	66	72	78	84	Radius(m)
16	147*											16
18	139*	124*										18
20	131*	118*	106*									20
22	123*	112*	101*	90.6*								22
24	118*	106*	95.3*	86.8*	78*	69.6*						24
26	114*	103*	91.7*	82.4*	75*	67.2*	60.1*					26
28	110*	99.2*	89.2*	79.4*	71.4*	65.1*	58.4*	52.2*				28
30	104*	95.9*	86.7*	77.7*	68.7*	62.2*	56.3*	50.8*	45.1*	38.7*		30
32		91.7*	84.2*	75.8*	67.4*	59.6*	54.2*	49.1*	44*	38.6*	32.6*	32
34		85.7*	81.1*	74*	66.1*	58.8*	52.1*	47.3*	42.8*	38.5*	32.5*	34
36		80.3*	75.9*	72.1*	64.7*	57.8*	50.7*	45.8*	41.3*	37.5*	32.4*	36
38			71.6*	68*	63.6*	56.9*	50*	43.7*	40*	36.2*	32.2*	38
40			67*	64.2*	61.1*	55.8*	49.4*	43.1*	38.3*	35.2*	31.5*	40
44				57.2*	54.8*	52.3*	47.9*	42.1*	36.4*	32.6*	29.6*	44
48					49*	47.1*	44.7*	40.9*	35.6*	30.6*	27.6*	48
52					44*	42.5*	40.7*	38.7*	34.8*	29.9*	25.5*	52
56						38.3*	36.8*	35.4*	33.5*	29.2*	25*	56
60							33.2*	32.1*	30.6*	28.6*	24.4*	60
64								29.3*	28.1*	26.8*	22*	64
68								26.7*	25.7*	24.4*	19.3*	68
72									23.5*	22*	16.7*	72
76										19.7*	14.5*	76
80											13*	80
84											11.6*	84

Load Chart of LJDB

SCC4500A—LJDB 8/9												
Boom length: 78m, Boom angle: 85°, Jib length: 24m~84m, Superlift radius:15m, Superlift counterweight: 250t, Rear counterweight: 140t, Carbody counterweight: 50t												
Radius(m)	24	30	36	42	48	54	60	66	72	78	84	Radius(m)
18	125*	112*										18
20	118*	106*	95.1*									20
22	111*	101*	91.4*	82.4*								22
24	103*	94.9*	86.9*	78.9*	70.8*							24
26	97.3*	88.6*	81.8*	75.3*	68.4*	61.5*	55.2*					26
28	93.7*	84.9*	77.3*	71.2*	65.5*	59.5*	53.7*	47.9*				28
30	90.6*	82.1*	74.3*	67.5*	62.2*	57.1*	51.7*	46.6*	40.9*			30
32		79.3*	72*	65.5*	59.2*	54.7*	49.8*	45.2*	40.5*	35*	29.6*	32
34		76.8*	69.9*	63.8*	57.4*	51.9*	47.8*	43.6*	39.4*	34.8*	29.5*	34
36		73.8*	67.8*	62.1*	56.1*	50.1*	45.7*	41.9*	38*	34.4*	29.3*	36
38			65.5*	60.4*	54.8*	49.2*	43.7*	40.2*	36.6*	33.4*	29.2*	38
40			61.4*	58.5*	53.5*	48.2*	42.9*	38.5*	35.4*	32.3*	29*	40
44				52.2*	49.9*	46.2*	41.4*	36.7*	32.5*	30*	27.2*	44
48					44.9*	43*	39.9*	35.4*	31*	27.6*	25.1*	48
52					40.5*	38.8*	37*	34.3*	30.4*	26.4*	23.3*	52
56						35*	33.5*	32.1*	29.4*	25.7*	22*	56
60							30.5*	29.2*	27.7*	25*	21.5*	60
64								26.6*	25.4*	24.1*	20.9*	64
68								24.3*	23.2*	22.2*	19.5*	68
72									21.3*	20.3*	16.9*	72
76										18.6*	14.7*	76
80										17.1*	12.6*	80
84											10.6*	84

Unit: t

Load Chart of LJDB

SCC4500A—LJDB 9/9												
Boom length: 84m, Boom angle: 85°, Jib length: 24m~84m, Superlift radius:15m, Superlift counterweight: 250t, Rear counterweight: 140t, Carbody counterweight: 50t												
Radius(m)	24	30	36	42	48	54	60	66	72	78	84	Radius(m)
18	111*											18
20	106*	95.8*	85.7*									20
22	99.7*	90.8*	82.3*	74.1*								22
24	92.8*	85.7*	78.7*	71.4*	64.5*							24
26	86.8*	80.6*	74.6*	68.5*	62.3*	56.1*						26
28	82.7*	75.5*	70*	65.1*	59.5*	54.2*	49*	42.9*				28
30	79.8*	72.9*	66.3*	61.3*	56.8*	52*	47.2*	42.6*	36.6*			30
32		70.4*	64.2*	58.3*	54*	49.7*	45.4*	41.2*	36.4*	31.3*		32
34		68.1*	62.2*	56.7*	51.2*	47.4*	43.7*	39.8*	35.9*	31.1*	26.4*	34
36		66.1*	60.3*	55.1*	50*	45.1*	41.8*	38.5*	34.8*	30.9*	26.2*	36
38			58.5*	53.6*	48.6*	43.9*	39.9*	36.6*	33.5*	30.5*	26*	38
40			56.7*	52*	47.4*	42.9*	38.4*	35.3*	32.2*	29.6*	25.8*	40
44				48.4*	45*	40.9*	36.8*	32.8*	29.6*	27.3*	24.7*	44
48				43.6*	41.5*	39*	35.2*	31.7*	28*	25.1*	22.9*	48
52					37.3*	35.7*	33.7*	30.5*	27.1*	23.6*	21.1*	52
56						32.4*	30.8*	29.3*	26.1*	22.9*	19.7*	56
60							28*	26.8*	25.2*	22.1*	19.1*	60
64							25.6*	24.4*	23.2*	21.4*	18.5*	64
68								22.3*	21.3*	20.1*	17.8*	68
72									19.5*	18.5*	17*	72
76										16.9*	14.9*	76
80										15.5*	12.9*	80
84											11*	84



Zhejiang Sany Equipment Co.,LTD

Sany Industrial Park, No.2087 Daishan Road, Wuxing District, Huzhou, Zhejiang Province, China Zip 313028
Service hotline 400 887 8318
Complaints hotline 400 887 9318

— Gent information —

Reminder:

For safe and reliable operation of the diesel engines, please fill Grade IV machines with Grade IV diesel and urea solution conforming to related national standards. Please refer to the operating instructions and related standards for details.

Any change in the technical parameters and configuration due to advancement in technology may occur without prior notice. The machine in the figures may include auxiliary equipment. This brochure is for reference only, and goods in kind shall prevail. Copyright at Sany Heavy Industry. No part of this catalogue may be copied, recorded or used for any purpose without written approval from Sany Heavy Industry.

© Printed in November 2020 in China

www.sany.com.cn



Instantly scanning for reading more