

CONVENTIONAL COMPACTION TECHNOLOGY.

PNEUMATIC TYRED ROLLERS, 8.8 t upwards.



MILLIONS OF KILOMETRES BEAR OUR SIGNATURE.

You build the finest roads so we can all move forward faster. And to ensure that you can progress faster, we build the best machines. As a member of the leading international FAYAT group, we supply machines for all areas of road construction – from soil compactors to cold planers and recyclers, from asphalt rollers to road pavers. For over 60 years, the history of our company has been synonymous with the history of road construction.

With our accumulated know-how, we are an innovation driver that sets the pace for an entire industry. BOMAG has developed a huge number of technologies, from systems for measuring and controlling compaction, such as ECONOMIZER and ASPHALT MANAGER, to technologies for reducing operating costs, such as ECOMODE and the most effective screed heating in the market:

MAGMALIFE. We offer solutions for a wide range of applications.

Our global network of experts and partners in over 120 countries is there to support you, from the configuration of the machines to providing solutions for the most challenging of tasks.

We owe our innovative strength to our more than 2,000 employees worldwide, their commitment and their unique wealth of experience. A source of know-how which has propelled us to worldwide market leadership in this sector. The reason for this is our unconditional commitment to quality: in product development and production, in the qualification of our employees, and in a service that guarantees optimal on-site support.







WE ENHANCE YOUR PRODUCTIVITY.

ASPHALT COMPACTION REQUIRES THE BEST DESIGN ENGINEERS AT BOMAG.

Compaction equipment has been developed, designed and built by us for almost 60 years. Our engineers are dedicated to making each new machine generation even better, more economical and productive than the previous generation. And they always have one target:

BOMAG must complete our customer's work more efficiently, conveniently and professionally.

Close contact to our customers helps us to find solutions which deliver a real increase in productivity, to complete work precisely to specification and productively.



With an operating weight of 8.8 t and more, BOMAG pneumatic tyred rollers are first choice for many applications.

With cab or ROPS, productivity and operating comfort are always ensured.

BOMAG was the first manufacturer to launch a pneumatic tyred roller which combines conventional compaction with a state-of-the-art hydrostatic drive, making it ideally suited for use on both earthworks and asphalt construction. The roller can adapt flexibly to any compaction task and excels in terms of power and efficiency. Safety and easy handling are also important factors for BOMAG.

As one of the first BOMAG rollers, the pneumatic tyred roller combines conventional compaction with a state-of-

the-art hydrostatic drive, making it ideally suited for use in earthworks and asphalt construction.

The expertise of our engineers and service support of our sales network are there to help you worldwide. You can depend on the legendary BOMAG quality. Because at BOMAG we focus on one target: To enhance your productivity.

BW 24 RH AND BW 27 RH PNEUMATIC TYRED ROLLERS – PROVEN COMPACTION TECHNOLOGY.

UNIFORM COMPACTION

- 2 steering pivots with axle and wheel hub oscillation
- Full adaptation to uneven surfaces
- Automatic tyre inflation system

FLEXIBLE WEIGHT ADJUSTMENT.

- Large ballast compartment (3.5 m³)
- Large opening on both sides
- Drainage for optional water ballast





MAXIMUM CONVENIENCE AND EASY OPERATION.

- ROPS cab (1 m x 1 m) offers maximum visibility and low noise levels
- Sliding seat and driving/braking control as in automobiles
- Clear dashboard layout

POWERFUL DRIVE.

- Reliable Deutz engine
- 2 hydraulic motors
- 2 multi-disc brakes for parking and dynamic service brake

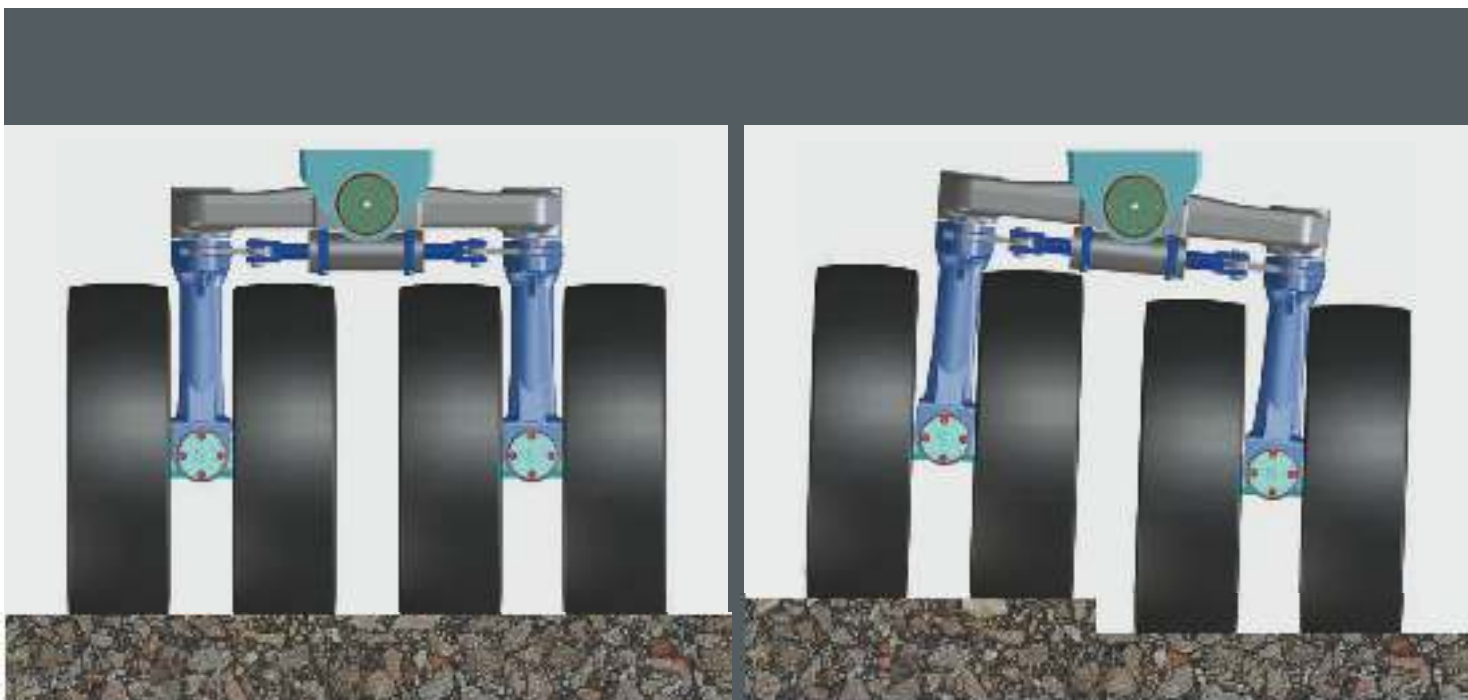
FLEXIBLE AND ECONOMICAL COMPACTION.

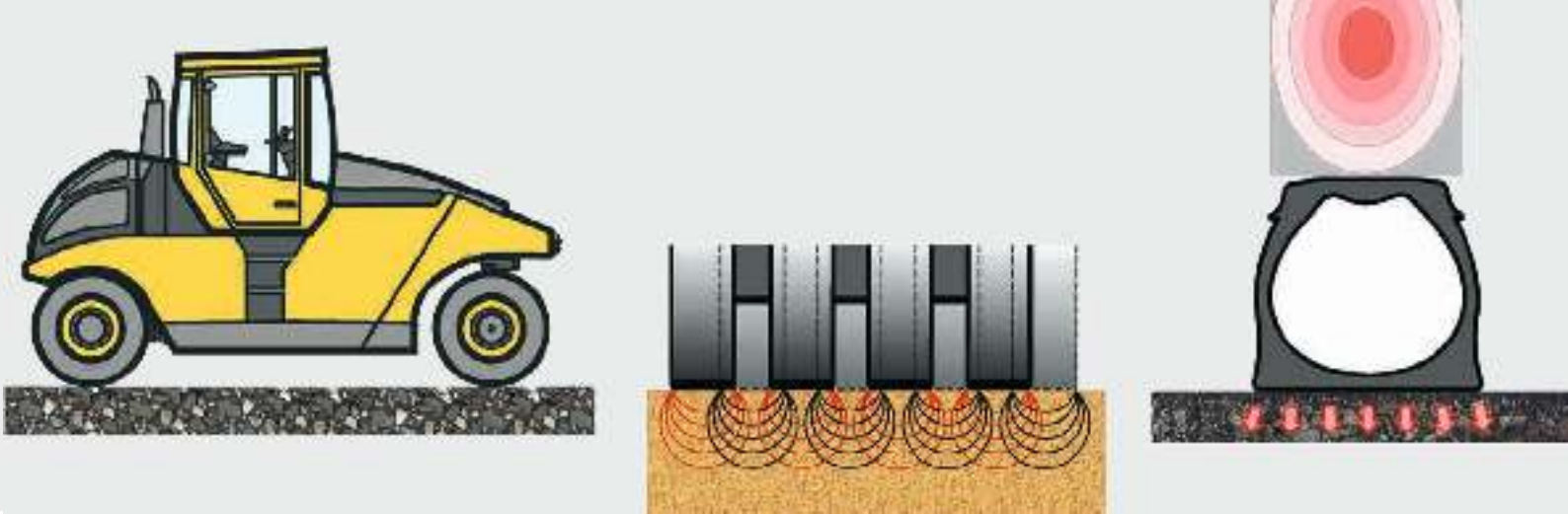
BOMAG pneumatic tyred rollers achieve top compaction quality thanks to the kneading and rolling effect of the wheels. Compaction is uniform, producing excellent surface finish. The weight of the rubber wheels generate vertical pressure, coupled with horizontal forces, which are applied in all directions around the wheels.



FLEXIBLE WEIGHT ADJUSTMENT:

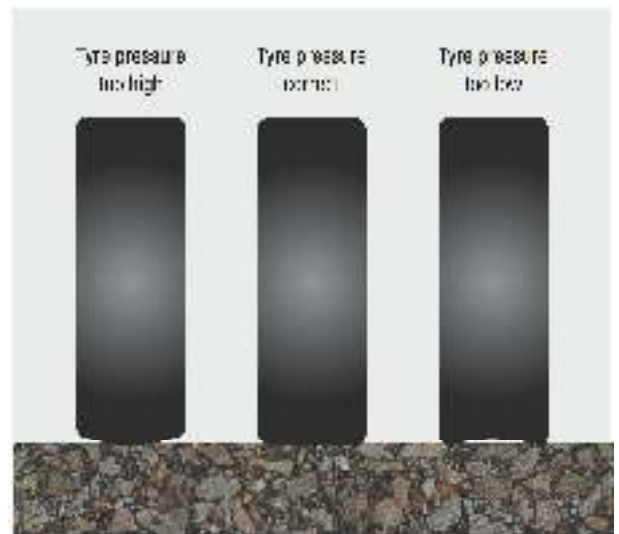
- The weight of the rubber wheels can be specifically adjusted to any requirements using differing ballast levels.
- Additional weights can be individually attached to the underneath of the frame.
- The large ballast compartment (3.5 m³) can be filled with different materials for flexible weight adjustment.
- Thanks to the optional, watertight welded frame, the pneumatic tyred roller can also be weighted with water.





THE CORRECT CONTACT PRESSURE:

- Compaction success depends on the right contact pressure.
- Automatic inflation system for fast adjustment of the tyre pressure.
- The tyre pressure can be varied between 2 and 8 bar. The variable air pressure guarantees even tyre contact with the subsoil.



COMPENSATION FOR UNEVENNESS:

- Even weight distribution across the tyres.
- A special design with level compensator protects the roller from tilting over.



EFFICIENT AND SAFE.

BOMAG BW 24 RH and BW 27 RH pneumatic tyred rollers combine conventional compaction technology with a hydrostatic drive. This offers extremely sensitive drive control and smooth reversing. The rear axles are driven by two hydraulic motors. This system is efficient and saves running and maintenance costs.

AUTOMATIC CONTROL:

- Two complete control panels and a sliding seat make work more efficient and provide the driver with a clear view.
- The pneumatic tyred rollers are operated just like cars with a throttle pedal and brakes.
- All control elements are easy to reach. The dashboard is clearly arranged for high levels of safety and efficiency.
- Precision rolling along edges or high-speed transport can be safely carried out.





SENSITIVE SPEED CONTROL:

- The hydrostatic drive produces extremely sensitive drive control and smooth reversing.
- In addition to the hydrostatic braking function, the machines are equipped with a dynamic service brake.

EASY, FAST SERVICING:

- Wide-opening engine hood provides easy access for servicing work.
- Service points are easy to access.



MODEL OVERVIEW.



The BOMAG BW 24 RH rolling asphalt in Uganda.



BOMAG pneumatic tyred rollers are also used for earthworks compaction and surface sealing.



Model types	BW 24 RH	BW 27 RH	BW 27 RH-4i
Operating weight* CECE [kg]	8,800	13,600	8,800
Max. operating weight [kg]	24,000	27,000	27,000
Working width [mm]	2,042	2,042	2,042
Max. wheel load [kg]	3,000	3,338	3,338
Engine output [kW]	75	100	95
Emission tier	Stage 3a Tier 3	Stage 3a Tier 3	Stage 3b Tier 4i

*) Approximate operating weights with basic equipment. The actual weight depends on equipment and accessories. Technical modifications reserved. Machines may be shown with options.



PERFECTION IS NO ACCIDENT.

All our know-how is invested in every BOMAG roller. Even in the finest details. So you can use your own experience on the job at hand. The result: tangible success. Every time.

