






**PRODUCT
SPECIFICATIONS**

SRC1100T

110 METRIC TON Rough Terrain Crane

QUALITY CHANGES THE WORLD



-  Max. Lifting Capacity: 110t
-  Max. Boom Length: 56m
-  Max. Grade ability: 75%

MORE THAN HEAVY LIFTING

SRC1100T

ROUGH TERRAIN CRANE



Strong structure

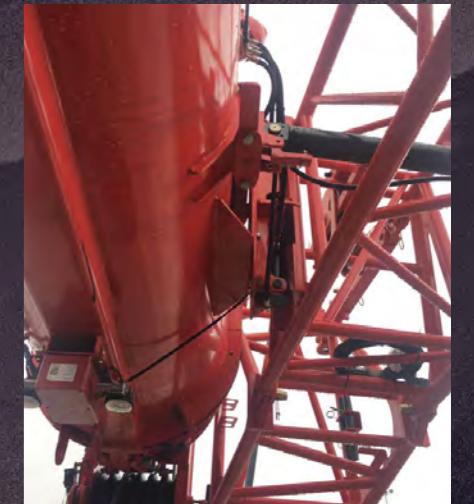
The U-shape boom is of 10% stronger than the counterparts, with decreased weight and increased stability.



Simple and convenient jib mounting to increase the efficiency

Jib swingout process only needs ONE operator. Only need 15mins to unfold and retract the jib with an experienced operator, which saves a half time than before.

Optimized structure of new design assists the jib mounting and operation.



Intelligent control

Newly-developed T-box, specially designed for fleet management, is used for collecting data and controlling parameter download. With the GSP features and Irootech cloud communication.

Remote control of counterweight and jib



Operator's cab



- The new design of windshield ensures safety and comfortable operation.
- Full-vision operator's cab with wider interior room.
- three stages of seat adjusting.
- New generation of smart control system.



Tiltable Cab

The cab can be tilted from 0° to 20° during operation for more comfortable control.



Extra-wide aluminum alloy access deck and ladder Rotatable footstep.

Smart control and advanced display



The 10.1" touch screen inserted with optical sensor can automatically adjust the lightness of screen.

It has the function of screen mirroring with smart phone. (Requires Android 8.0 and later) and connect to camera to monitor the operation.

Technical Parameters

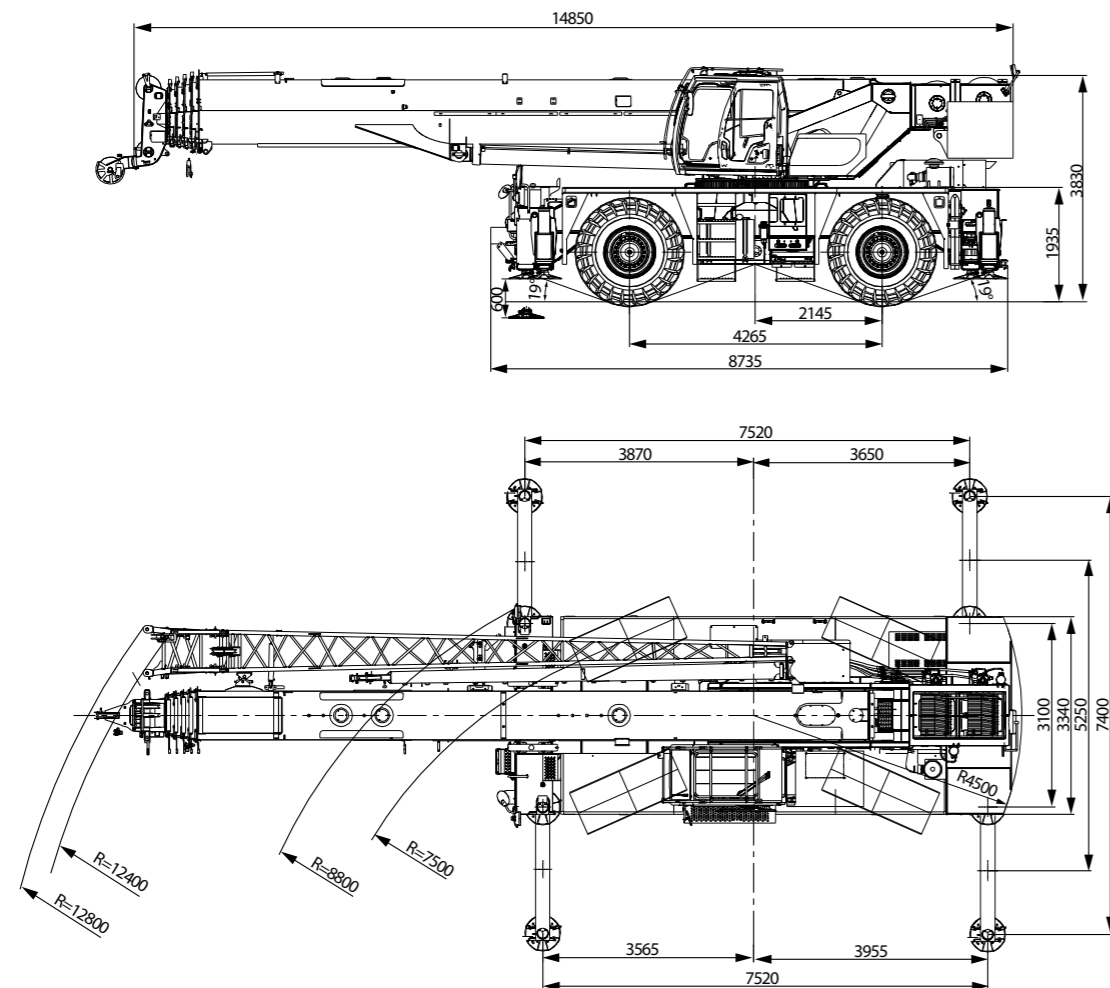
Chassis

Engine	Tyre	Min.travel speed	Max.travel speed	Gradeability	Speed mode	Gear shifts
QSB6.7	29.5-25	0-4km/h	35km/h	75%		3 ← , 3 →
-	-	-	-	-		3 ← , 3 →

Superstructure

	Working speed	Diameter and length of wire rope	Single rope pull
Main winch	0~150m/min	20mm/300m	73.6KN
Aux winch	0~150m/min	20mm/160m	73.6KN
Swing	0~1.6rpm		
Luffing	Luffing angle: -2~80.5° / Period of full luffing up: 90s / Period of luffing from 20° to 60°: 45s		
Telescope and retract	Full telescoping & retracting of boom: 400s		

Overall Dimensions



Operation equipment

Conditions	Option A	Option B	Option C
Desert	Desert air filter	Air inlet shutoff	Inflator
Oil field	Fire extinguisher	Chassis water heater	-
Extreme cold	Low temperature kit		
Other	Reversing camera	Winch monitor	Hook monitor

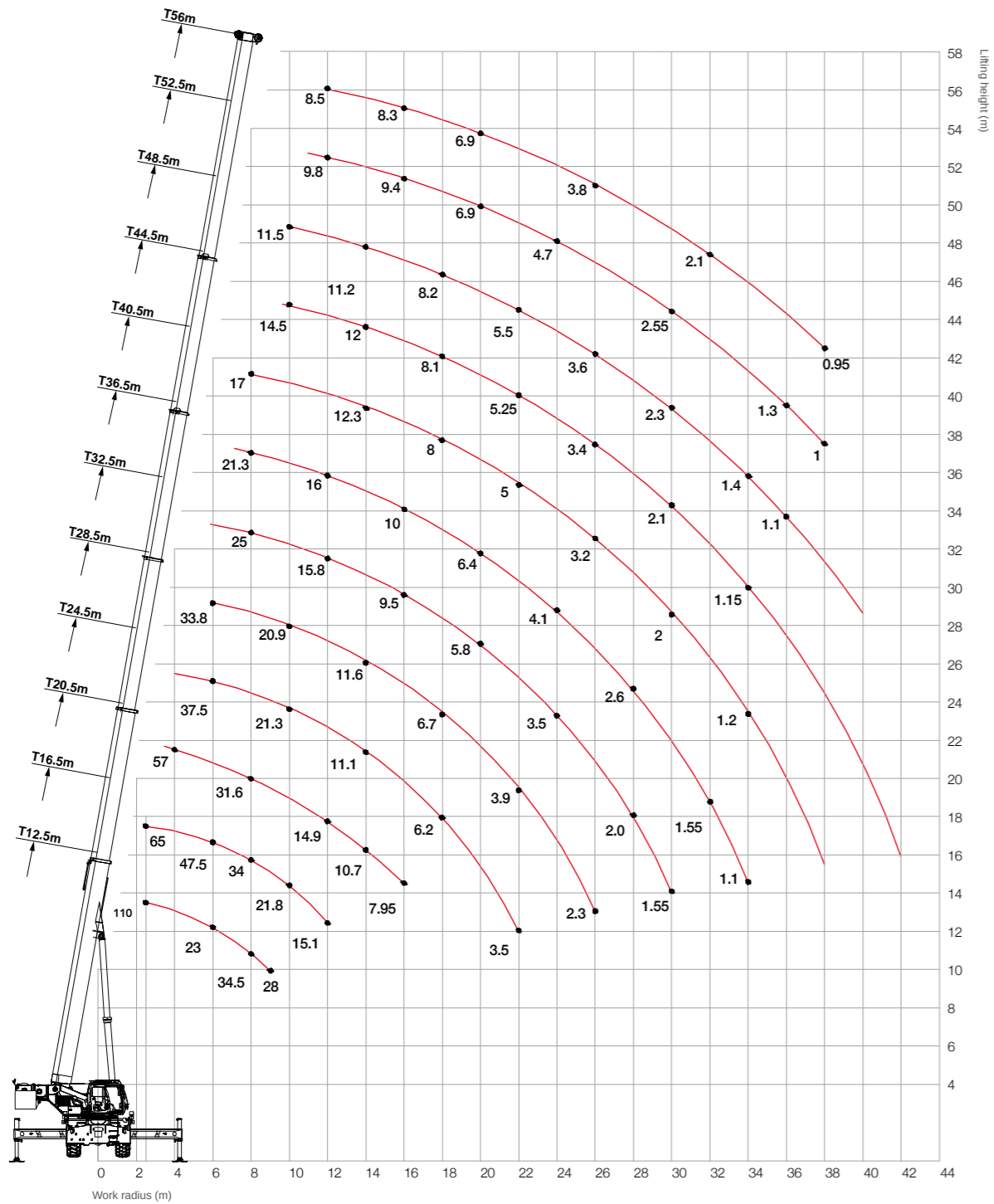
Transport Dimensions

Unit: mm



Items	Weight (kg)	Load on front axle (kg)	Load on rear axle (kg)
Main machine	43205	30350	12855
Counterweight	10500	-3975	+14475
Fixed jib	1150	+2070	-920
Boom tip	100	+265	-165
Main hook	110t	1300	+2330
	75t	800	+1435
	60t	620	+1110
	30t	360	+645
Auxiliary hook	8t	160	+205

Working Range – Telescopic Boom



Load Chart–Telescopic Boom

Unit: metric ton



Boom length(m) Radius(m)	12.5	16.5	20.5	24.5	28.5	32.5	36.5	40.5	44.5	48.5	52.5	56.0	Boom length(m) Radius(m)
2.5	110.00	65.00											2.5
3.0	82.50	65.00	59.00										3.0
3.5	75.00	65.00	58.00	47.00									3.5
4.0	68.00	63.00	57.00	46.00									4.0
4.5	62.00	60.50	54.50	44.50	36.00								4.5
5.0	57.50	56.00	50.00	41.50	35.00								5.0
6.0	48.20	47.50	44.50	37.50	33.80	28.00							6.0
7.0	43.00	41.50	39.30	32.50	30.50	27.00	21.30						7.0
8.0	34.50	34.00	31.60	30.20	27.50	25.00	21.30	17.00					8.0
9.0	28.00	27.40	26.20	25.10	24.50	23.50	20.70	17.00	14.50				9.0
10.0		21.80	21.80	21.30	20.90	20.80	19.60	17.00	14.50	11.50			10.0
11.0		18.10	17.90	18.30	18.10	18.20	18.10	16.40	14.20	11.50	10.00		11.0
12.0		15.10	14.90	15.40	15.80	15.80	16.00	15.50	13.60	11.50	9.80	8.50	12.0
14.0			10.70	11.10	11.60	12.50	12.80	12.30	12.00	11.20	9.60	8.40	14.0
16.0			7.95	8.30	8.80	9.50	10.00	10.00	9.90	9.90	9.40	8.30	16.0
18.0				6.20	6.70	7.40	8.00	8.00	8.10	8.20	8.30	8.00	18.0
20.0				4.60	5.15	5.80	6.40	6.40	6.50	6.70	6.90	6.90	20.0
22.0				3.50	3.90	4.50	5.15	5.00	5.25	5.50	5.70	5.70	22.0
24.0					3.00	3.50	4.10	4.00	4.25	4.45	4.70	4.60	24.0
26.0					2.20	2.70	3.30	3.20	3.40	3.60	3.85	3.80	26.0
28.0						2.00	2.60	2.60	2.70	2.90	3.15	3.10	28.0
30.0						1.55	2.10	2.00	2.10	2.30	2.55	2.60	30.0
32.0							1.55	1.55	1.60	1.80	2.05	2.10	32.0
34.0							1.10	1.20	1.15	1.40	1.65	1.65	34.0
36.0										1.10	1.30	1.30	36.0
38.0											1.00	0.95	38.0
Min. boom angle	0°	0°	0°	0°	0°	0°	0°	21°	33°	39°	42°	47°	Min. boom angle
Telescoping status (%)													
2nd boom	0	46	92	92	92	92	92	92	92	92	92	100	2nd boom
3rd boom	0	0	0	46	46	46	46	92	92	92	92	100	3rd boom
4th boom	0	0	0	0	46	46	46	46	92	92	92	100	4th boom
5th boom	0	0	0	0	0	46	46	46	46	92	92	100	5th boom
6th boom	0	0	0	0	0	0	46	46	46	46	92	100	6th boom
Rope rate	16	10	9	7	6	4	4	4	4	4	4	4	Rope rate

Load Chart–Jib

Unit: metric ton



Boom angle(°)	56.0m+10.3m			56.0m+18m			Boom angle(°)
	0°	20°	40°	0°	20°	40°	
81	5.5	4.5	4.0	3.0	2.7	2.3	81
80	5.4	4.5	3.9	3.0	2.6	2.2	80
79	5.3	4.5	3.8	3.0	2.5	2.2	79
78	5.1	4.4	3.7	2.9	2.5	2.2	78
77	4.9	4.3	3.6	2.9	2.4	2.1	77
76	4.7	4.1	3.4	2.9	2.4	2.1	76
75	4.5	3.9	3.2	2.8	2.3	2.1	75
73	4.1	3.7	2.9	2.7	2.2	2.0	73
70	3.0	2.7	2.5	2.3	1.9	1.8	70
68	2.4	2.3	2.1	1.9	1.5	1.4	68
65	2.0	1.9	1.7	1.3	1.1	1.1	65
63	1.7	1.6	1.4	1.0	0.8	0.9	63
60	1.4	1.2	1.1				60
58	1.1	0.8	0.7				58

Load Chart—Telescopic Boom, On Tires Stationary

Unit: metric ton

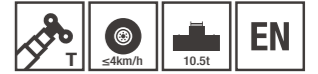


Load Over Front											
Radius(m)	Boom angle(°)	12.5m	Boom angle(°)	16.5m	Boom angle(°)	20.5m	Boom angle(°)	24.5m	Boom angle(°)	28.5m	Radius(m)
4.5	63	21									4.5
5.0	60	20									5.0
6.0	54	17.5	65	18.6							6.0
7.0	47	14.8	60	15.8							7.0
8.0	39	12.6	56	13.7	64	14.2					8.0
9.0	29	10.8	51	11.9	61	12.4	67	12.9	71	12.9	9.0
10.0			46	10.4	57	10.9	64	11.4	69	11.5	10.0
11.0			40	9.2	54	9.7	61	10.2	67	10.3	11.0
12.0			34	7	50	7.6	58	9.1	64	9.2	12.0
14.0					41	5.6	52	6.2	59	6.3	14.0
16.0					30	4.2	46	4.8	54	4.9	16.0
18.0							38	3.7	49	3.8	18.0
20.0							28	2.9	43	3	20.0
22.0							12	2.3	36	2.3	22.0
24.0									27	1.8	24.0
26.0									12	1.4	26.0
Min. boom angle at empty load	0°										Min. boom angle at empty load
Telescoping status (%)											
2nd boom	0		0		0		0		0		2nd boom
3rd boom	0		0		0		0		0		3rd boom
4th boom	0		0		0		0		0		4th boom
5th boom	0		0		0		46		92		5th boom
6th boom	0		46		92		92		92		6th boom
Rope rate					4						Rope rate

360° Slewing											
Radius(m)	Boom angle(°)	12.5m	Boom angle(°)	16.5m	Boom angle(°)	20.5m	Boom angle(°)	24.5m	Boom angle(°)	28.5m	Radius(m)
4.5	63	12									4.5
5.0	60	11									5.0
6.0	54	7.5	65	10.5							6.0
7.0	47	5.2	60	8.5							7.0
8.0	39	3.6	56	5.2	64	5.2					8.0
9.0	29	2.1	51	4	61	4.5	67	5	71	5.2	9.0
10.0			46	3	57	3.5	64	4.1	69	4.1	10.0
11.0			40	2.1	54	2.7	61	3.2	67	3.2	11.0
12.0			34	1.6	50	2	58	2.5	64	2.7	12.0
14.0			11	0.8	41	1.1	52	1.6	59	1.7	14.0
16.0							46	1	54	1	16.0
18.0											18.0
20.0											20.0
22.0											22.0
24.0											24.0
26.0											26.0
Min. boom angle at empty load	0°		0°		27°		37°		48°		Min. boom angle at empty load
Telescoping status (%)											
2nd boom	0		0		0		0		0		2nd boom
3rd boom	0		0		0		0		0		3rd boom
4th boom	0		0		0		0		0		4th boom
5th boom	0		0		0		46		92		5th boom
6th boom	0		46		92		92		92		6th boom
Rope rate					4						Rope rate

Load Chart—Telescopic Boom, Pick and Carry

Unit: metric ton



Load Over Front											
Radius(m)	Boom angle(°)	12.5m	Boom angle(°)	16.5m	Boom angle(°)	20.5m	Boom angle(°)	24.5m	Boom angle(°)	28.5m	Radius(m)
4.5	63.0	16.8									4.5
5.0	60.0	15.5									5.0
6.0	54.0	12.5	65.0	13.5							6.0
7.0	47.0	10.2	60.0	11.5							7.0
8.0	39.0	8.8	56.0	9.6	64.0	10.5					8.0
9.0	29.0	7.2	51.0	8.1	61.0	9.0	67.0	9.5	71.0	9.0	9.0
10.0			46.0	7.0	57.0	7.8	64.0	8.5	69.0	8.1	10.0
11.0			40.0	6.0	54.0	6.9	61.0	7.4	67.0	7.2	11.0
12.0			34.0	5.1	50.0	5.9	58.0	6.5	64.0	6.4	12.0
14.0					41.0	4.6	52.0	5.1	59.0	5.1	14.0
16.0					30.0	3.5	46.0	4.0	54.0	4.0	16.0
18.0							38.0	3.2	49.0	3.3	18.0
20.0							28.0	2.4	43.0	2.6	20.0
22.0							12.0	1.8	36.0	1.9	22.0
24.0									27.0	1.6	24.0
26.0									12.0	1.2	26.0
Min. boom angle at empty load	0°										Min. boom angle at empty load
Telescoping status (%)											
2nd boom	0		0		0		0		0		2nd boom
3rd boom	0		0		0		0		0		3rd boom
4th boom	0		0		0		0		0		4th boom
5th boom	0		0		0		46		92		5th boom
6th boom	0		46		92		92		92		6th boom
Rope rate					4						Rope rate



Sany Automobile Hoisting Machinery Co., Ltd.

No.168, Jinzhou Avenue, Jinzhou Development Zone, Changsha, Hunan, China Postcode: 410600
Service: 0086-400 6098 318 Hotline: 400 8879 318
Email: crd@sany.com.cn

Reminder:
For safe and reliable operation of the diesel engines, please fill Grade IV machines with Grade IV diesel and urea solution conforming to related national standards. Please refer to the operating instructions and related standards for details.

Any change in the technical parameters and configuration due to advancement in technology may occur without prior notice. The machine in the figures may include auxiliary equipment. This brochure is for reference only, and goods in kind shall prevail.
Copyright at Sany Heavy Industry. No part of this catalogue may be copied, recorded or used for any purpose without written approval from Sany Heavy Industry.

© Printed in December 2020 in China

www.sanyglobal.com

