




# Berco Mining Products



thyssenkrupp





Stick with Berco: we offer  
a century of experience,  
with applications in mines  
all over the world

With 100 years of experience in designing, developing and testing undercarriage systems together with major global OEMs, Berco's mining products guarantee total quality and peace of mind to our customers in the toughest applications.

With a team of dedicated engineers, Berco is constantly pursuing excellence and innovation: the Platinum Line – developed specifically for mining applications - offers customers outstanding products of a quality even better than OEM parts.

Optimized design, quality of materials and precise control of every single production process all go together to improve undercarriage lifetime and reduce total cost per hour.

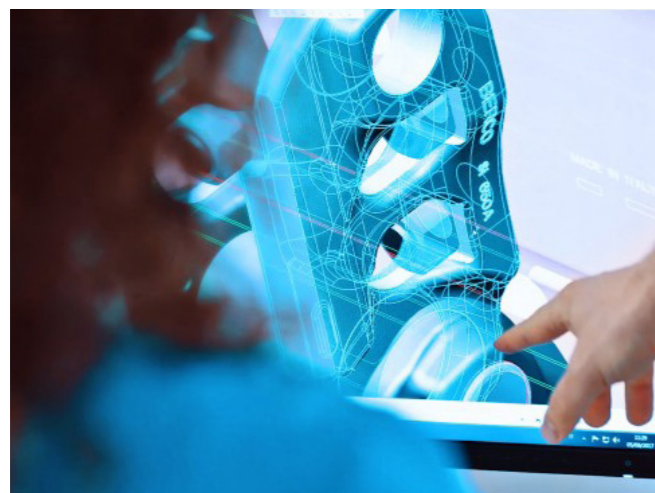
The BOPIS Life system supports workshops in monitoring undercarriage condition and planning maintenance accordingly, thus ensuring maximum machine operation.

# Why Berco undercarriage products?

We have the best quality because we own the whole process

## R&D

Optimized design of every part as result of 100 years' experience developing undercarriage solutions in close collaboration with major OEMs and field engineers. Advanced software and in-house bench tests guarantee maximum reliability of products in the field.



## Forging



Forging capabilities; Berco is able to forge all parts in-house thanks to 20 hot forging lines - including a 32 kton press – and over 3,000 sets of dies using a modern tooling system comprising next-generation and high-speed machining tools.

## Heat treatment

Heat treatment processes that are the focus of continuous innovation to guarantee superior quality products with excellent wear resistance in all conditions. The main process parameters (temperature gradients, time, temperatures, chemical composition, etc.) are constantly monitored in real time by computer systems connected to the company network to guarantee the highest quality heat treatment standards.



## Automated assembly



Highly automated assembly processes at our factories in Italy - including wrist robots, gantry robots, hydraulic handlers with self-learning capabilities and stacker cranes for handling pallets – ensure perfect manufacturing and higher product quality.

# The right solution for your mining application

Berco Mining Products represent an efficient, reliable and full-lifecycle solution for open pit mining, quarrying and high-volume earthmoving operations, covering machines from 50 to 400 tons with chain pitches from 240 to 395 mm.

Whatever the application, our team of engineers is available to identify and develop a tailor-made solution for your machine.

## Berco components

- ➔ Track chains, standard and heavy duty
- ➔ Track shoes, including forged for heavy duty applications
- ➔ Rollers, standard and “all weather”
- ➔ Idlers, fabricated and forged
- ➔ Sprockets and segments, cast and forged



# Berco Platinum line

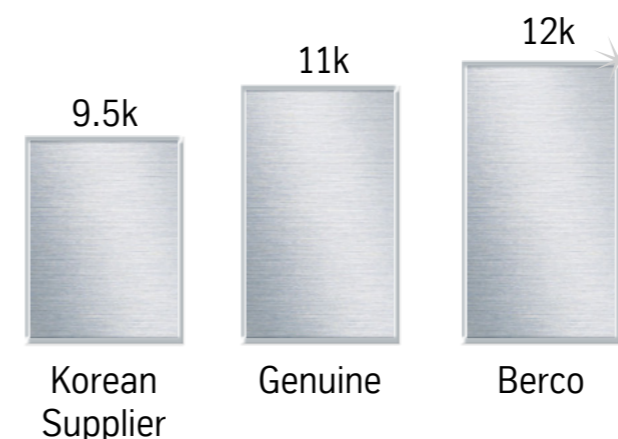
When the job requires exceptional solutions, Berco is the perfect partner for your business. We develop tailored solutions to serve machines that have to work in unique conditions. Our Platinum Line guarantees outstanding

undercarriage lifetime allowing customers to reduce cost per hour of operation in mining, large-scale construction, oil & gas and all applications where reliability matters: Platinum Line is the most profitable investment for your machine.

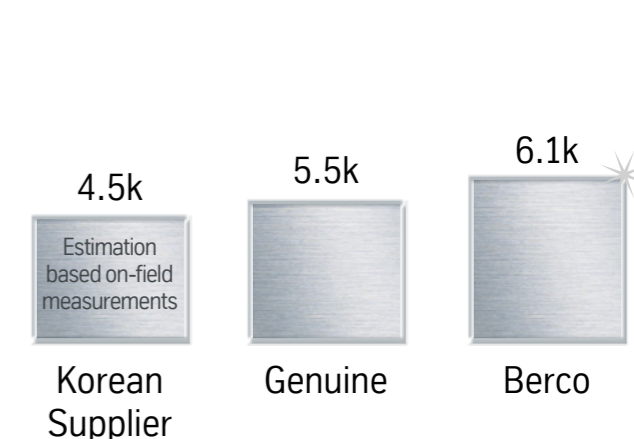
## Benchmark comparison

Longer undercarriage lifetime and reduced cost per hour. In a benchmark comparison Berco products performed better than competitor and OEM products.

D10\* - Coal application - Lifetime hrs

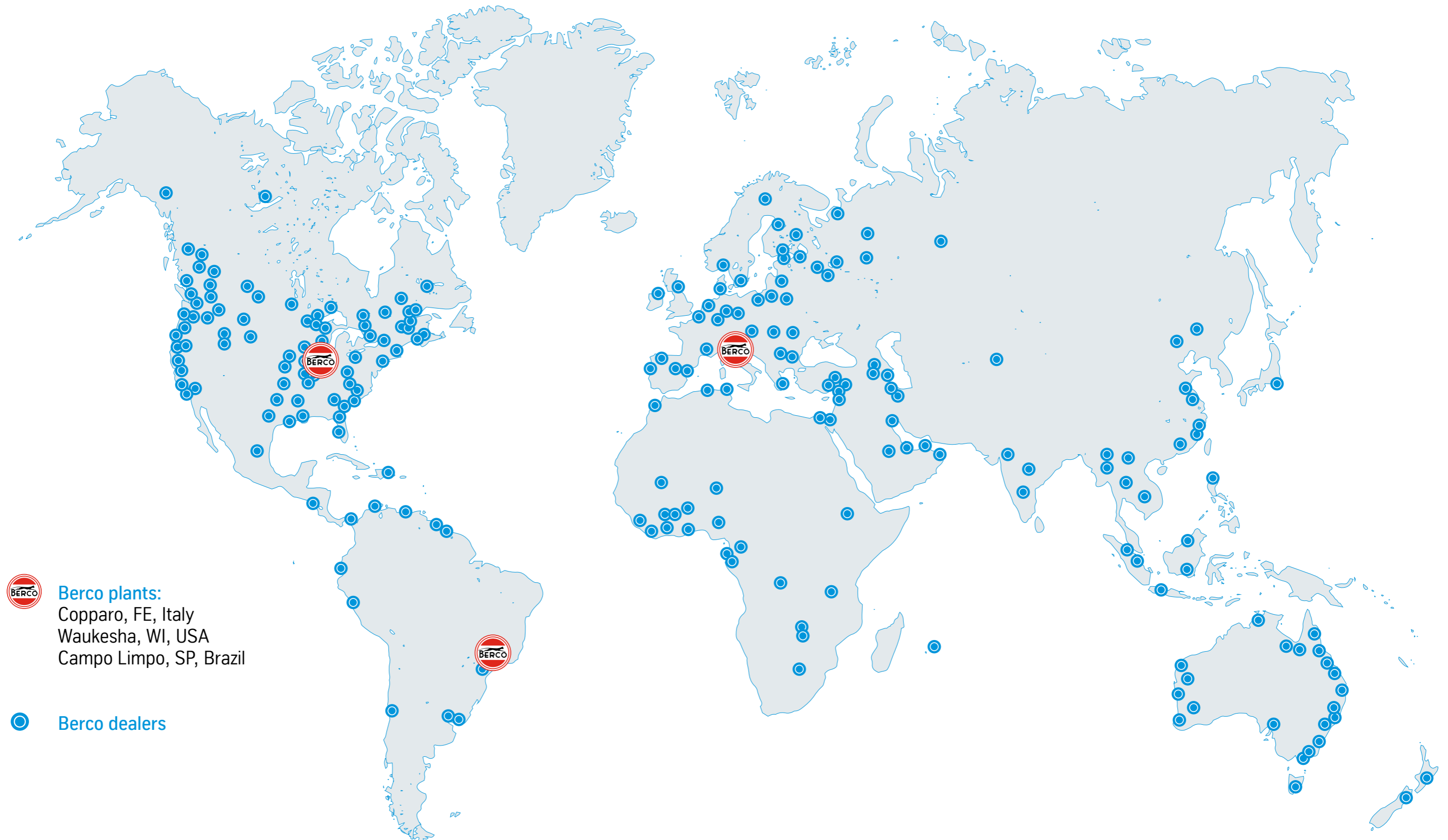


D10\* - Gold application - Lifetime hrs



\*All products shown in this document originate from Berco exclusively. Any references to Caterpillar (the Caterpillar word signs) are mentioned to communicate that the aforementioned products are only suitable for Caterpillar machines with the corresponding model designation.

# We offer local support with our worldwide dealer network



## Dozers

|             | Track group | Track roller | Upper roller | Idler | Sprocket |
|-------------|-------------|--------------|--------------|-------|----------|
| <b>CAT*</b> |             |              |              |       |          |
| D8          | ●           | ●            | ●            | ●     | ●        |
| D9          | ●           | ●            | ●            | ●     | ●        |
| D10         | ●           | ●            | ●            | ●     | ●        |
| D11         | ●           | ●            | ●            | ●     | ●        |

| <b>Komatsu</b> |   |   |   |   |   |
|----------------|---|---|---|---|---|
| D155A          | ● | ● | ● | ● | ● |
| D275A          | ● | ● | ● | ● | ● |
| D375A          | ● | ● | ● | ● | ● |
| D475A          | ● | ● | ● | ● | ● |

| <b>Liebherr</b> |   |   |   |   |   |
|-----------------|---|---|---|---|---|
| PR754           | ● | ● | ● | ● | ● |
| PR764           | ● | ● | ● | ● | ● |
| PR776           | ● | ● | ● | ● | ● |

## Drilling machine

| <b>Epiroc</b>   |   |   |   |   |   |
|-----------------|---|---|---|---|---|
| PV351 Pit Viper | ● | ● | ● | ● | ● |

● AM available   ○ OE available   - Not available   ★ Coming soon

For more information about Berco Mining components, please ask your dealer to find it out at our online catalogue.

## Excavators

|              | Track group | Track roller | Upper roller | Idler | Sprocket |
|--------------|-------------|--------------|--------------|-------|----------|
| <b>CAT*</b>  |             |              |              |       |          |
| 365          | ●           | ●            | ●            | ●     | ●        |
| 375          | ●           | ●            | ●            | ●     | ●        |
| 385          | ●           | ●            | ●            | ●     | ●        |
| 390          | ●           | ●            | ●            | ●     | ●        |
| 6018 / RH90C | ●           | ●            | ●            | -     | -        |
| 6020B        | ★           | ★            | ★            | ★     | ★        |

| <b>Komatsu</b>  |   |   |   |   |   |
|-----------------|---|---|---|---|---|
| PC650 / PC700   | ● | ● | ● | ● | ● |
| PC800           | ● | ● | ● | ● | ● |
| PC1250          | ● | ● | ● | ● | ● |
| PC1600 / PC1800 | ● | ● | ● | ● | ● |
| PC2000          | ● | ● | ● | ● | ● |

| <b>Liebherr</b>      |   |   |   |   |   |
|----------------------|---|---|---|---|---|
| R964                 | ● | - | - | ● | - |
| R974                 | ● | ● | ● | ● | ● |
| R984 / R9100 / R9150 | ● | ● | ● | ● | ● |
| R9200                | ● | - | ● | - | - |
| R9250                | ● | ● | ● | - | - |
| R9350                | ○ | ○ | ○ | ○ | ○ |
| R9400                | ○ | ○ | ○ | ○ | ○ |

| <b>Hitachi</b>  |   |   |   |   |   |
|-----------------|---|---|---|---|---|
| ZX650           | ● | ● | ● | ● | ● |
| ZX690           | ● | ● | ● | ● | ● |
| ZX850 / ZX870   | ● | ● | - | ● | ● |
| EX1200          | ● | ● | ● | ● | ● |
| EX1800 / EX1900 | ● | ● | ● | - | ● |

\*All products shown in this document originate from Berco exclusively. Any references to Caterpillar (the Caterpillar word signs) are mentioned to communicate that the aforementioned products are only suitable for Caterpillar machines with the corresponding model designation.

Forged Technologies

Berco S.p.A.  
Via 1° Maggio, 237  
44034 Copparo (FE) Italy  
P: +39 0532 864 111

[info.berco@thyssenkrupp.com](mailto:info.berco@thyssenkrupp.com)  
[www.thyssenkrupp-berco.com](http://www.thyssenkrupp-berco.com)



**100** YEARS  
WHEN PASSION MEETS QUALITY