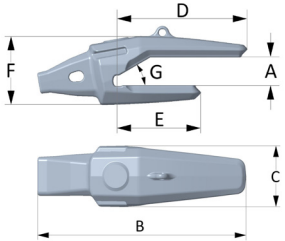




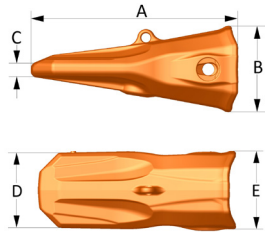
R50 SPECIFICATIONS Teeth, Adapters, Accessories



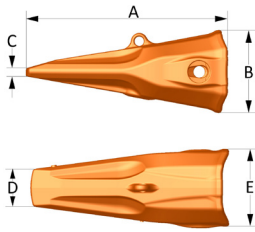
UA



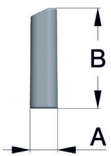
WC



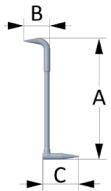
AE



PE



LP



LT

Typical machine weight - Excavator 50-80 MT
Maximum breakout force in HD/XHD 400 kN

Typical machine weight - Loader 80-100 MT
Maximum breakout force in HD/XHD 720 kN

Type	Part. no			A mm	B mm	C mm	D mm	E mm	F mm	G bevel	Weight kg
UA	R50UA70			72	583	171	362	233	190	30°	51,6
UA	R50UA75			77	583	171	359	230	190	30°	51,3
UA	R50UA80			82	583	171	356	227	190	30°	50,7
WC	R50WC			184	82	142					3,9
AE	R50AE			448	186	32	171	178			33,4
PE	R50PE			454	186	20	87	178			28,4
LP	R50LP			40	146						1,0
LT	R50LT			422	91	125					1,1



EXCAVATOR TEETH AND ADAPTERS

ADAPTER

BE

A 1 1/2 bottom leg adapter. Designed for both general and tough excavation in different types of ground.

SL

Top mounted single leg adapter designed for use in general conditions whenever a smooth surface is required.

UA

A 1 1/2 top leg adapter. Designed for both excavators and loaders. Can be used with or without a wear cap.

WEAR CAP

WC

Mechanical wear cap protects the adapter topside in high abrasion and impact applications.

LOCK

LP

Reusable locking pin of forged steel also usable in hot slag applications.

LR

Locking ring integrated in the tooth. Secures the locking function and simplifies teeth exchange.

TOOTH

GPE

Standard tooth with slim design for optimal penetration and durability in general purpose applications.

VE

The tooth for maximum penetration. Makes light work of hard surface layers and frozen ground.

WE

Used primarily in a corner position in combination with VE, this tooth provides the penetration demanded by hard surfaces.

FE

An extra-wide tooth for excavating and cleaning – penetration and straight-edge performance from a single solution.

TOOTH

AE

Abrasion tooth for highly abrasive soils and rocks such as granite, basalt and sandstone. The design provides maximal wear material with maintained good penetration.

TOOTH

PE

Penetration tooth with added body mass and narrow tip combines penetration with impact and abrasion resistance.

TOOL

LT

Tool for turning the locking ring in locked and unlocked position.



LOADER TEETH AND ADAPTERS

ADAPTER

SL

Top mounted single leg adapter designed for use in general conditions whenever a smooth surface is required.

TL

A 1 1/2 top leg adapter. Designed for both general and tough loading in different types of ground conditions.

UA

A 1 1/2 top leg adapter. Designed for both excavators and loaders. Can be used with or without a wear cap.

WEAR CAP

WC

Mechanical wear cap protects the adapter topside in high abrasion and impact applications.

LOCK

LP

Reusable locking pin of forged steel also usable in hot slag applications.

LR

Locking ring integrated in the tooth. Secures the locking function and simplifies teeth exchange.

TOOTH

GPL

In both general and highly abrasive environments. This all-round tooth is popular for its excellent penetration.

AL

Abrasion tooth with a high level of penetration. Recommended in blasted rock application.

HAL

Outstanding wear resistance combined with a high level of penetration. This tooth provides extra protection for the lower part of the adapter and is ideal where ground conditions are highly abrasive.

TOOL

LT

Tool for turning the locking ring in locked and unlocked position.



SHROUDS EXCAVATOR

LIP SHROUD

MSC	MSL	MSR	MSP
Mechanical lip shroud Center for straight edges and for use in combination with MSL & MSR on spade nose buckets. Provides full lip protection between adapters in abrasive applications.	Mechanical lip shroud Left* 15° angle for delta and spade nose buckets. * Left from excavating direction.	Mechanical lip shroud Right* 15° angle for delta and spade nose buckets. * Right from excavating direction.	Mechanical shroud protector designed to protect the locking device and the backside of the shrouds.

RAIL	LOCKING PARTS	SIDE SHROUD	PIN AND RING
WSR Welded on shroud rail holds the lip shrouds in secure position.	SHROUD LOCK, BOLT AND WASHER Self tightening lock, bolt and washer for the mechanical shroud.	SSM Mechanical side shroud is used to protect the bucket side plates and fastened with pin and ring.	PIN AND RING Locking pin and ring for the side shroud.

HEEL SHROUD	WELD-ON LIP SHROUD		
WHS Welded on heel shroud provides excellent wear protection of the lower outside corner of all types of buckets.	WSCE Weld-on lip shroud, Center. Fits 40-70mm straight cutting edges.	WSLE Weld-on lip shroud Left*. Fits 60-70mm cutting edges with 15° angle. *Left from excavating direction.	WSRE Weld-on lip shroud Right*. Fits 60-70mm cutting edges with 15° angle. *Right from excavating direction.

TS C-rex 001 EN



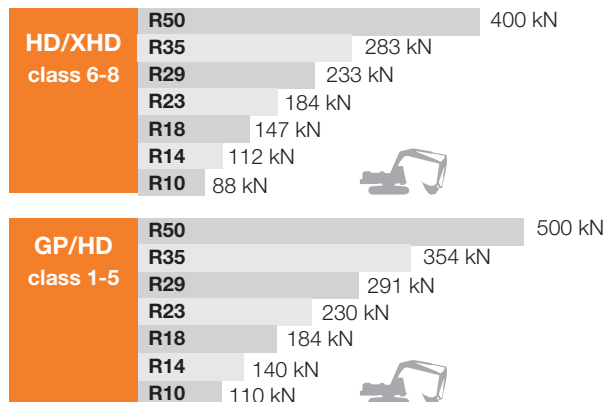
APPLICATION TABLE

APPLICATION TABLE Based on DIN 18300 ground classification

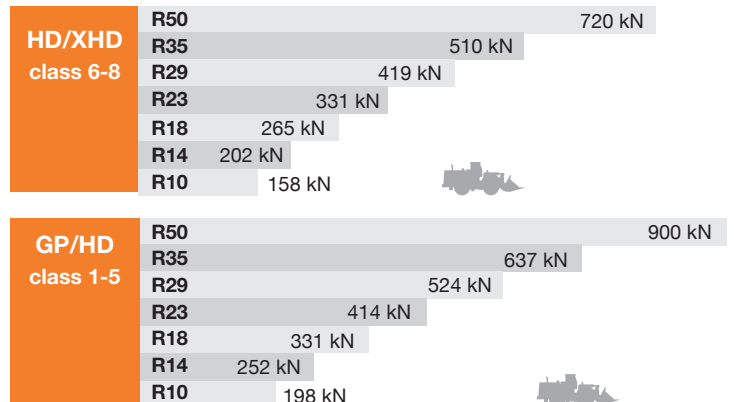
Ground classification	Description of ground conditions	Working conditions	Application
Class 1 Top soil without stones	Top layer of soil.	Very little wear. Very little penetration resistance. No impact resistance.	GP
Class 2 Wet ground	Sludge, mud, peat.	Little wear. Very little penetration resistance. No impact resistance.	GP
Class 3 Light ground	Sand, fine gravel, sandy soil. Stone size up to approx. 60 mm	Moderate wear. Little penetration resistance. No impact resistance.	GP
Class 4 Moderately heavy ground	Very stony ground, gravel, stones. Stone size above 60 mm.	Considerable wear. Some penetration resistance. Moderate impact resistance.	GP / HD
Class 5 Dense, moderately heavy ground	Till, rigid clay, sand-clay mix, moraine, marl.	Considerable wear. Moderate penetration resistance. Little impact, some break through resistance.	HD
Class 6 Dense, heavy ground	Hard marl and clay, hard sandy ground, hard stony soil. Stone size up to approx. 200 mm.	Considerable wear. Considerable penetration resistance. Considerable impact and break through resistance.	HD
Class 7 Lighter rock	Loose rock, crumbled rock, slate. Very hard ground with stones, approx. 200 mm or bigger.	Usually considerable wear. Considerable penetration resistance. Considerable impact and break through resistance.	XHD
Class 8 Heavy rock	Blasted rock, size over 0,1 m ³ .	Very significant wear. Considerable penetration resistance. Very significant impact and break through resistance.	XHD

For further information on welding, assembly and maintenance, see welding and assembly instructions.

Breakout force diagram – Backhoe



Breakout force diagram



Combi Wear Parts AB
 Hantverkargatan 3, Box 205
 SE-681 24 Kristinehamn, Sweden
 Tel: +46 550 410 550
 combiwearparts.com