



# SCC8000A

## Crawler Crane 800 Tons Lifting Capacity

Quality Changes the World



**Max. lifting moment: 12016t·m**  
**Max. boom length: 111m**  
**Max. luffing jib combination: 99m+96m**

The parameters and diagrams in the brochure is only for reference, which is subject to further update in real machine.

■ [www.sany.com.cn](http://www.sany.com.cn)



**Crawler Crane Series**  
**SCC8000A**

P03

Main Features

- Cab
- Upperworks
- Lower structure
- Counterweight
- Operating Equipment
- Hydraulic system
- Working weight
- Ground pressure
- Gradeability
- Safety device

P10

Technical Parameters

- Main specifications
- Outline dimensions
- Transport dimensions
- Assembly schematics

P29

Boom Combinations

- Boom combination
- H working condition
- HDB working condition
- HJ working condition
- HJDB working condition
- FJ working condition
- FJDB working condition
- HJFJ working condition
- HJFJ120+15 working condition
- HJFJDB working condition
- HJFJ\_5 working condition
- HJFJ\_7 working condition
- HJFJ\_9 working condition
- HJFJDB\_5 working condition
- HJFJDB\_7 working condition
- HJFJDB\_9 working condition
- HJFJDB\_SY3 working condition
- LJ working condition
- LJDB working condition



# **SCC8000A** **SANY CRAWLER CRANE** **800 TONS LIFTING CAPACITY**

QUALITY CHANGES THE WORLD

## Features

- Page 04 Cab
- Page 05 Superstructure
- Page 06 Lower structure
- Page 06 Counterweight
- Page 07 Working element
- Page 07 Hydraulic system
- Page 07 Working weight
- Page 07 Ground pressure
- Page 07 Gradeability
- Page 08 Safety device





## Superstructure

### Engine

- Cummins (Euro Tier III), optional Euro Tier IV;
- Rated power: 447 Kw;
- Rated speed: 1800 rpm;
- Maximum output torque: 2542 N·m;
- Speed at the maximum output torque: 1400 rpm.

### Load hoist winch mechanism

- The planetary gear box driven by hydraulic motor of variable displacement is used to control the main load hoist I and main load hoist II to lift and lower the load. It provides good inching performance, and also ensures quick powered lifting of main load hoist winches;
- Only one hoist winch is needed for load below 400t, while for load above 400t, both load hoist winches are required. The main hoist winch I and main hoist winch II have synchronization function;
- The maximum number of parts of line is 60. The multilayer winding of rope-folding drum ensures no rope disorder. The gear box is featured in low noise, high efficiency, long service life and easy access to oil change.

Main load hoist winch W1-1 (main load hoist winch 1) W1-2 (main load hoist winch 2)	Drum diameter	726mm
	Speed of rope in the outermost working layer	0-164m/min
	Diameter of wire rope	28mm
	Rope length	1250m
	Rated line pull	17.2t
Auxiliary load hoist winch W2	Drum diameter	574mm
	Speed of rope in the outermost working layer	124m/min
	Diameter of wire rope	28mm
	Rope length	600m
	Rated line pull	17.2t

### Boom hoist winch mechanism

- Components: Boom luffing mechanism, jib luffing mechanism, superlift luffing mechanism;
- All luffing winches adopt fold-line drums, which are driven by hydraulic motor through the planetary gear box and can realize a number of compound actions and good inching performance.

Boom luffing mechanism W3	Drum diameter	574mm
	Speed of rope in the outermost working layer	63*2m/min
	Diameter of wire rope	28mm
	Rope length	800m
Jib luffing mechanism W4	Drum diameter	574mm
	Speed of rope in the outermost working layer	0~148m/min
	Diameter of wire rope	28mm
	Rope length	1300m
Superlift luffing mechanism W5	Drum diameter	574mm
	Speed of rope in the outermost working layer	0~164m/min
	Diameter of wire rope	28mm
	Rope length	1360m

### Slewing mechanism

- The slewing hydraulic system adopts double motor to drive the spur gear through the planetary gear box, which can realize 360° rotation, slewing speed of 0~0.8 rpm, stepless speed regulation, no backlash at starting or stopping, stable operation and free slipping function at neutral position. Slewing ring: It is adopted with three-row roller type slewing bearing with external gears. The main unit can be separated from the lower structure through the adaptor ring.

## Working implement



- The operating equipment is made of high-strength steel tubes and high-strength steel plates, and the rolled welded pulleys are adopted on the boom head and hook.

### Boom

- The boom is a spatial lattice structure of welded tubes with equal section areas of inserts and tapered sections for two ends. The boom top and root are strengthened with steel plates, which is easier for load transfer;
- The length of the boom is 24m (basic boom) to 111m (with superlift);
- Compositions: boom base 10.5m, 1 transition section of 12 m, 1 connecting tip of 1.5m, 1 insert of 3m, 3 inserts of 6m, and 6 inserts of 12 m;
- The extension jib is installed on the boom top.

### Fixed jib

- The fixed jib is a spatial lattice structure of welded tubes with equal section areas of inserts and tapered sections for two ends. The jib top and root are strengthened with steel plates, which is easier for load transfer;
- The length of the fixed jib is 12m~15m;
- Compositions: jib base 6m x1, insert 3m x1, jib top 6m x1.

### Luffing jib

- The luffing jib is a spatial lattice structure of welded tubes with equal section areas of inserts and tapered sections for two ends. The jib top and root are strengthened with steel plates, which is easier for load transfer;
- The length of the luffing jib is 24m-96m;
- Compositions: jib base 10.5mx1, boom insert (H8E), tapered sectionx1, insert 6mx2, insert 12mx4, jib top 7.5mx1;
- The extension jib is installed on the jib top.

### Superlift device

- The superlift mast is a spatial lattice structure of welded tubes with equal section areas of inserts and tapered sections for two ends. The mast base and top are strengthened with steel plates, which is easier for load transfer;
- The length of the superlift mast is 36m~42m;
- Compositions: superlift base 12m x1, insert 6m x1, insert 12m x1, top 12m x1.

### Hook

- There are 7 types of hook available. The specific parameters are as follows:

Hook	Maximum lifting capacity	Quantity	Number of pulleys	Unit weight (t)
800t hook	800t	1	2×15	22.5
500t hook	500t	1	2×9	11.2
350t hook	350t	1	2×7	10.4
180t hook (double pulley block)	180t	1	2×3	8.4
150t hook (single pulley block)	150t	1	5	4.8
50t hook	50t	1	1	1.4
18t ball hook	18t	1	0	1

Note: The 800 t hook can be decomposed into 400 t hook.



## Additional device

- Side outriggers;
- Lower structure jack cylinders;
- Crawler self-assembly cylinder (on the boom hoist mast);
- Portable hydraulic power pack;
- Quick connector ring (connecting the superstructure/lower structure).



## Counterweight

- The counterweight includes the carbody counterweight, rear counterweight, superlift counterweight, and the specific parameters are as follows:

Name	Quantity	Length(m)	Width(m)	Height(m)	Unit weight(t)
Carbody counterweight	4	2.40	2.85	0.484	10
Carbody counterweight tray	2	2.97	5.43	1.06	20
Rear counterweight	20	2.40	2.85	0.484	10
Rear counterweight tray	2	3.00	2.66	2.40	15
Superlift counterweight	36	2.40	2.85	0.484	10
Superlift counterweight tray	1	9.25	2.50	1.80	32
Rear counterweight additional tray	1	3.64	2.95	1.74	6.7



## Hydraulic system

- Hydraulic system includes load hoist hydraulic system, traveling hydraulic system, slewing hydraulic system, boom hoist hydraulic system, servo hydraulic system, back-stop hydraulic system, cooling system, auxiliary hydraulic system. The main hydraulic components are original parts imported.
- Characteristics: The load hoisting, traveling, boom hoist and slewing hydraulic systems are of closed loop type, featuring energy saving, high efficiency, quick response, low heat radiation and long service life;
- The servo system adopts electrical proportional control components to facilitate the accurate and intelligent control;
- The back-stop hydraulic system adopts balance valve of external control and unloading, and it is mounted on the cylinder to make sure it is safe and reliable;
- The cooling system is characterized by higher power and quicker cooling.



## Working weight

- The working weight is about 615t, including superstructure, lower structure, main unit counterweight, central counterweight, 24m base boom and 800t hook.



## Ground pressure

- The average ground bearing pressure of the crane with base boom is 0.2 MPa.



## Gradeability

- The gradeability of the crane with base boom is 15%.



**SCC8000A**  
**SANY CRAWLER CRANE**  
**800 TONS LIFTING CAPACITY**

QUALITY CHANGES THE WORLD

## Technical Parameters

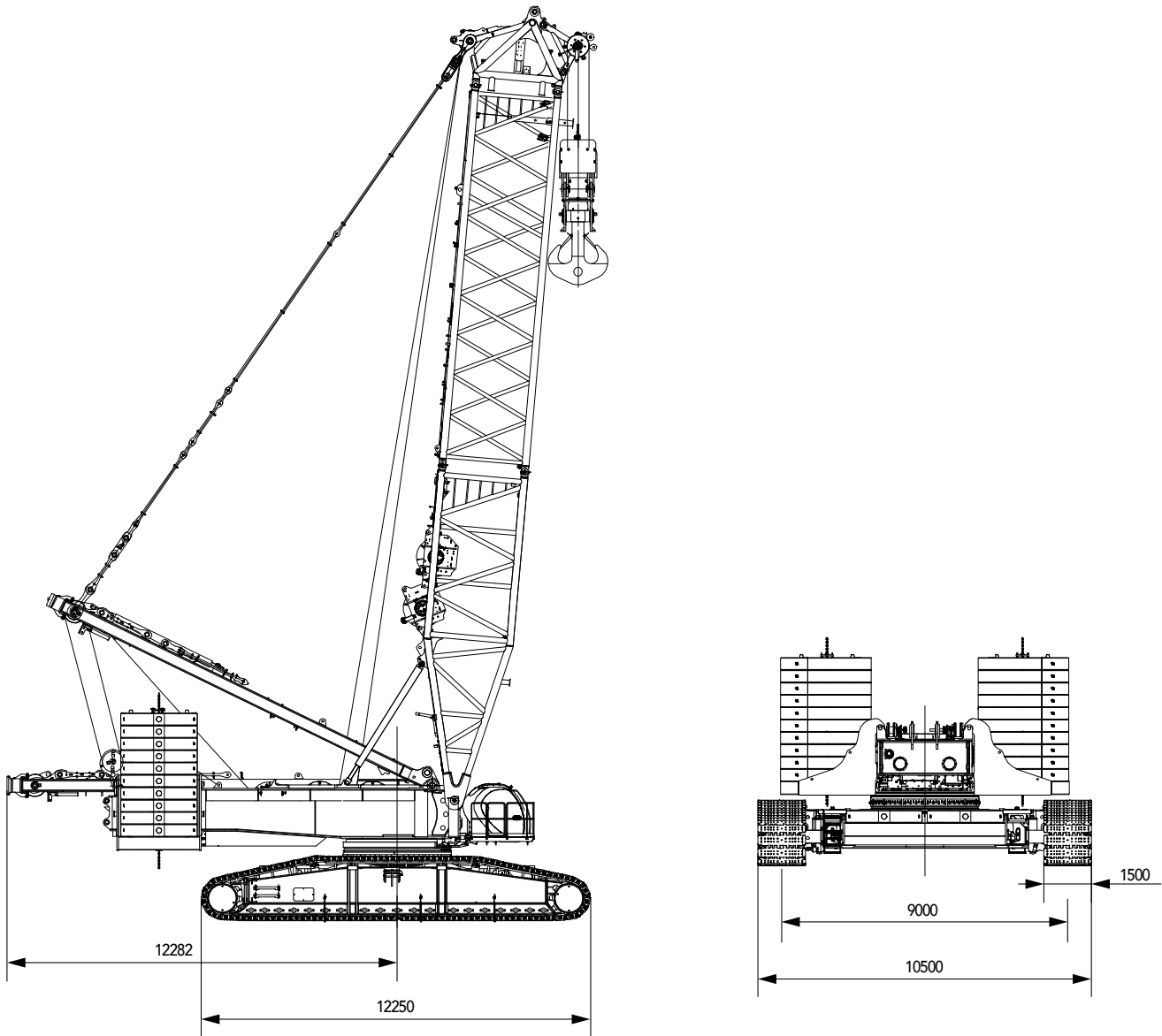
- Page 11 Main performance parameters
- Page 12 Basic dimensions of overall crane
- Page 14 Transportation dimensions
- Page 23 Installation schematic diagram

> 10

## Main Performance Parameters

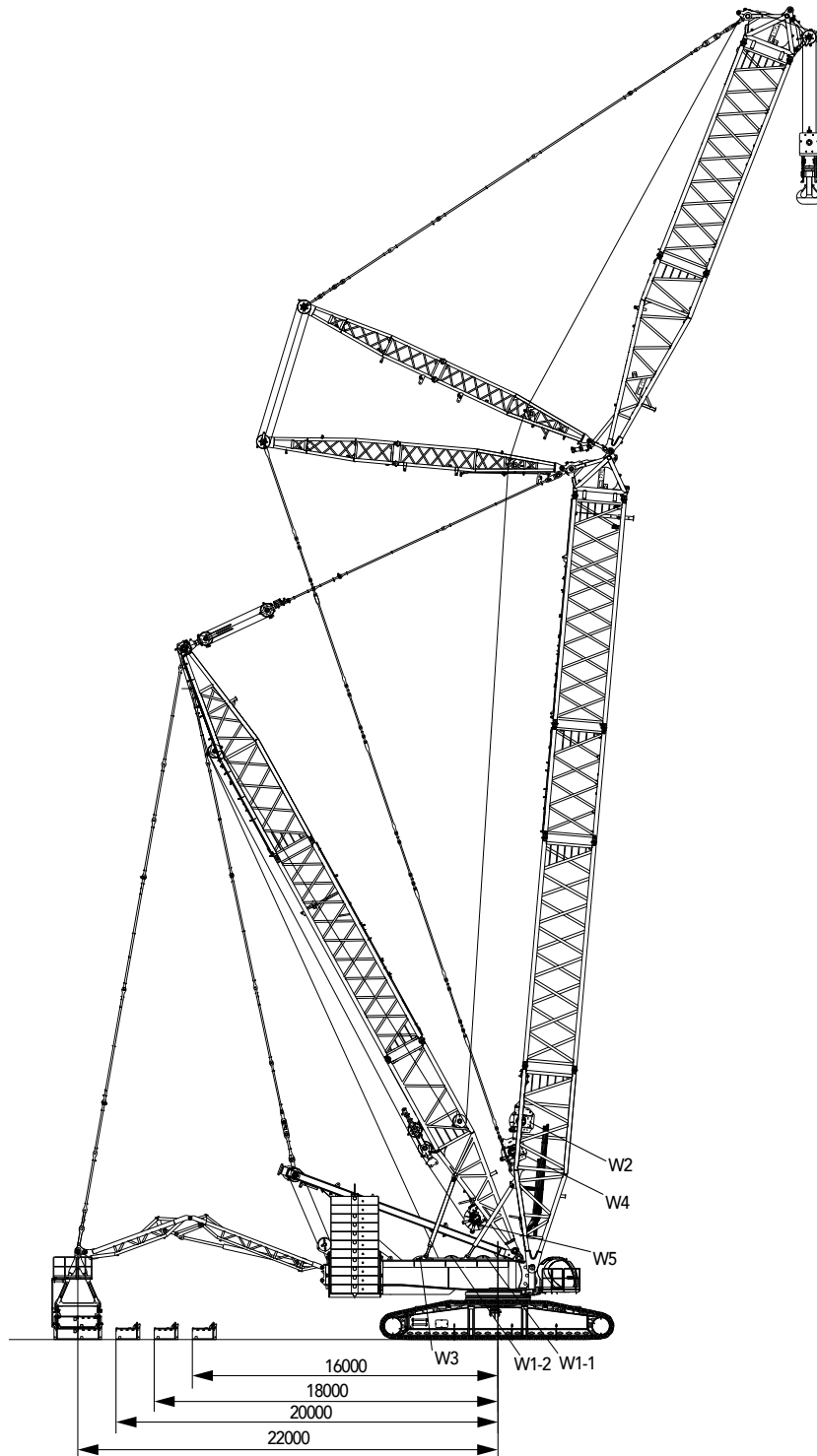
Major Performance & Specifications of SCC8000A		
Performance indexes	Unit	Parameter
Maximum rated lifting capacity	t	700 (7m operating radius)
Maximum rated lifting capacity (with superlift)	t	800 (12m operating radius)
Maximum rated lifting moment	t·m	4956
Maximum rated lifting moment (with superlift)	t·m	12016
Boom length	m	24~99
Boom length (with superlift)	m	42~111
Mixed boom length	m	84~123
Mixed boom length (with superlift)	m	90~147
Luffing jib length	m	24~96
Luffing jib length (with superlift)	m	24~96
Length of short fixed jib	m	12~15
Longest boom combination (LJDB working condition)	m	99+96
Longest boom for wind energy configuration (without superlift)	m	120+15
Longest boom for wind energy configuration (with superlift)	m	168+12
Boom luffing angle	°	30~85
Jib luffing angle	°	15~75
Maximum rope speed of single rope of main load hoist winch (outermost working layer)	m/min	164
Maximum rope speed of single rope of aux. load hoist winch (outermost working layer)	m/min	124
Maximum rope speed of single rope of boom hoist mechanism (outermost working layer)	m/min	63×2
Maximum rope speed of single rope of jib luffing mechanism (outermost working layer)	m/min	148
Maximum rope speed of single rope of superlift luffing mechanism (outermost working layer)	m/min	164
Slewing speed (no load)	r/min	0.8
Travelling speed	km/h	0~1.0 (high speed)\0~0.3 (low speed)
Gradeability (with basic boom, cab facing backward)	%	15
Rated output power of the engine	kW/r/min	447/1800
Machine weight (basic boom, 230t machine rear counterweight, 80t carbody counterweight, with 800t hook)	t	610
Average ground bearing pressure of the crawler (base boom, 230t machine counterweight, 80t carbody counterweight, 800t hook)	MPa	0.2
Machine counterweight	t	230
Superlift counterweight (including tray)	t	390
Carbody counterweight (including tray)	t	80
Maximum transportat dimensions of single piece (L×W×H)	mm	14200×3400×2640
Maximum transport weight of single piece	t	52/48
Transport weight of rotating bed (with quick connector ring)	t	47



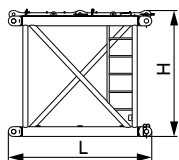
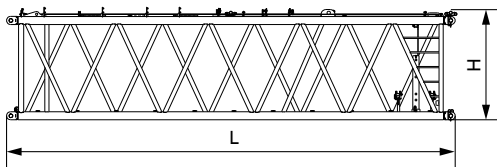
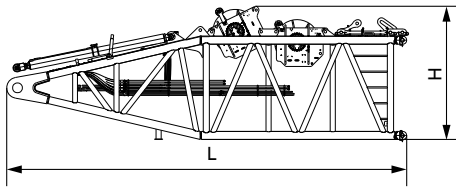
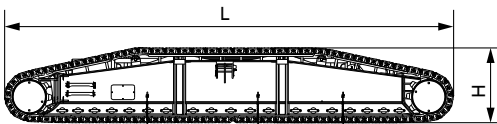
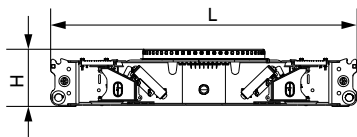
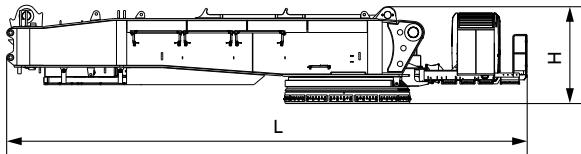
**Outline Dimension**

Unit: mm

### Outline Dimension



## Transport Dimension



### Basic Machine (with quick connector ring) ×1

Length (L)	14.20m
Width (W)	3.40m
Height (H)	2.64m
Weight	47.0t

### Carbody (with quick connector ring) ×1

Length (L)	8.36m
Width (W)	3.40m
Height (H)	1.56m
Weight	32.0t

### Crawler assembly ×2

Length (L)	12.37m
Width (W)	1.83m
Height (H)	2.07m
Weight	48.0t

Note: There are two types of crawlers, randomly based on actual configuration shipped. The other weighs 52t.

### Boom base (H2) (with aux. hoist and jib luffing winches) ×1

Length (L)	10.90m
Width (W)	3.00m
Height (H)	3.63m
Weight	31.3t

Note: aux. hoist winch 5.5t, jib luffing winch 8.3t

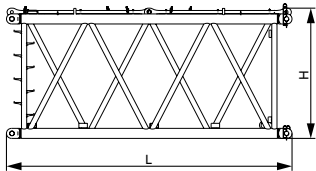
### 12 m transition section (H4) ×1

Length (L)	12.24m
Width (W)	2.99m
Height (H)	2.94m
Weight (including jib luffing winch)	9.2t

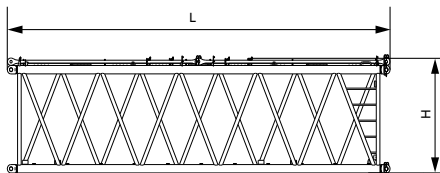
### 3m boom insert ×1

Length (L)	3.24m
Width (W)	2.99m
Height (H)	2.94m
Weight	2.9t

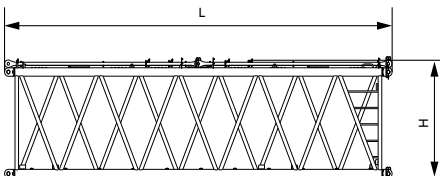
## Transport Dimension



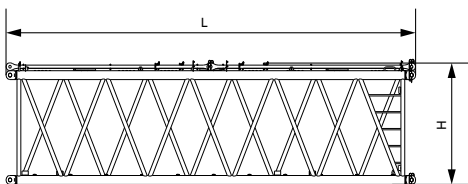
6m boom insert (H6)	×3
Length (L)	6.24m
Width (W)	2.99m
Height (H)	2.94m
Weight	5.1t



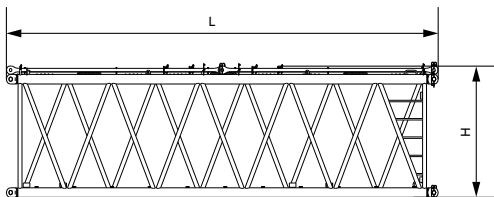
12m boom insert B (H8B)	×2
Length (L)	12.24m
Width (W)	2.99m
Height (H)	2.94m
Weight	9.3t



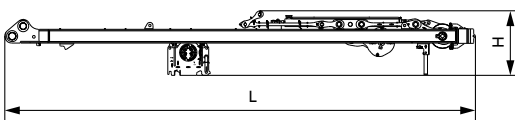
12m boom insert C (H8C)	×2
Length (L)	12.24m
Width (W)	2.99m
Height (H)	2.94m
Weight	8.3t



12m boom insert D (H8D)	×1
Length (L)	12.24m
Width (W)	2.99m
Height (H)	2.94m
Weight	7.7t

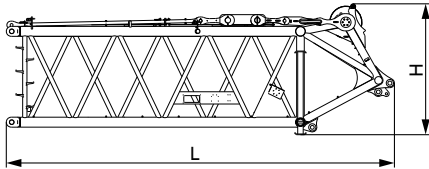


12m boom insert E (H8E)	×1
Length (L)	12.24m
Width (W)	2.99m
Height (H)	2.94m
Weight	7.0t



Boom hoist mast	×1
Length (L)	13.67m
Width (W)	2.41m
Height (H)	1.73m
Weight (including boom hoist winch)	23.3t

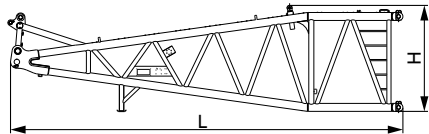
## Transport Dimension



### Luffing jib top (LJ1)

×1

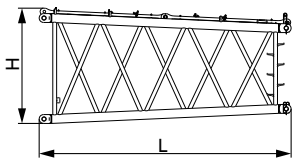
Length (L)	8.55m
Width (W)	2.57m
Height (H)	2.93m
Weight	6.5t



### Luffing jib base (LJ2)

×1

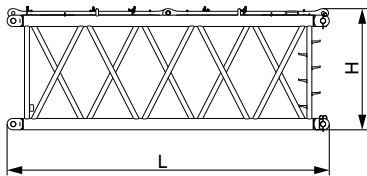
Length (L)	10.8m
Width (W)	2.99m
Height (H)	2.96m
Weight	6.5t



### 6m jib tapered insert (LJ4)

×1

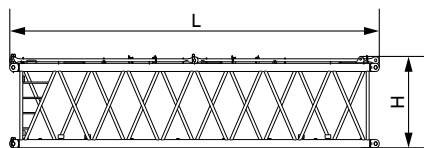
Length (L)	6.24m
Width (W)	2.99m
Height (H)	2.90m
Weight	3.2t



### 6m luffing jib insert A (LJ6)

×2

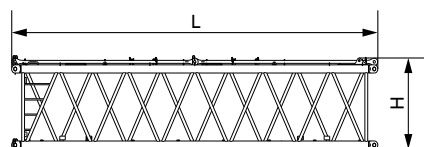
Length (L)	6.24m
Width (W)	2.64m
Height (H)	2.39m
Weight	3.2t



### 12m luffing jibe insert A (LJ8A)

×1

Length (L)	12.24m
Width (W)	2.64m
Height (H)	2.39m
Weight	5.5t

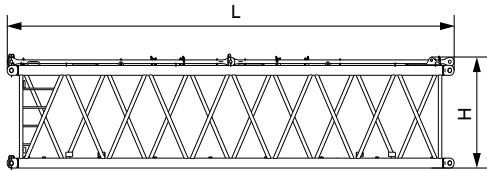


### 12m luffing jibe insert B (LJ8B)

×1

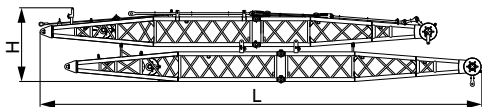
Length (L)	12.24m
Width (W)	2.64m
Height (H)	2.39m
Weight	5.3t

## Transport Dimension



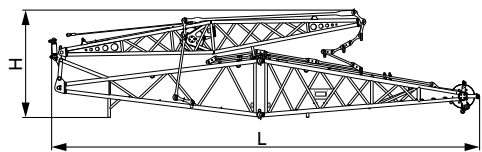
### 12m luffing jib insert C (LJ8C) ×2

Length (L)	12.24m
Width (W)	2.64m
Height (H)	2.39m
Weight	5.2t



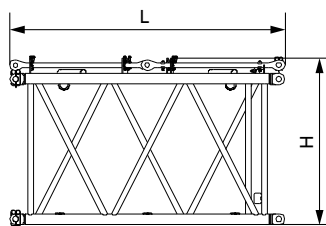
### Luffing jib front and back struts ×1

Length (L)	18.00m
Width (W)	2.62m
Height (H)	3.00m
Weight	17.8t



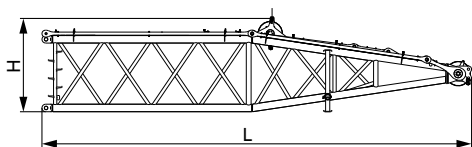
### Fixed jib assembly ×1

Length (L)	12.71m
Width (W)	2.48m
Height (H)	3.19m
Weight	6.0t



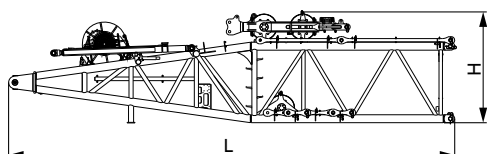
### 3m fixed jib insert (FJ3) ×1

Length (L)	3.14m
Width (W)	2.13m
Height (H)	1.89m
Weight	0.7t



### Superlift mast top (D1) ×1

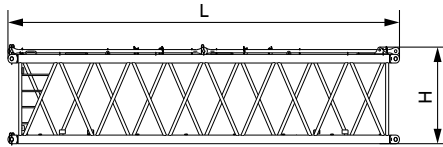
Length (L)	12.51m
Width (W)	2.99m
Height (H)	2.77m
Weight	11.5t



### Superlift mast base (D2) ×1

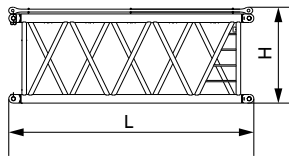
Length (L)	12.30m
Width (W)	2.99m
Height (H)	3.10m
Weight (with winch)	25t

## Transport Dimension



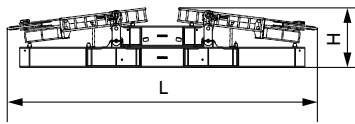
### 12m superlift mast insert (D6) ×1

Length (L)	12.24m
Width (W)	2.57m
Height (H)	2.40m
Weight	8.5t



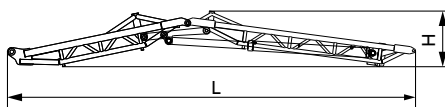
### 6m superlift mast insert (D4) ×1

Length (L)	6.24m
Width (W)	2.57m
Height (H)	2.40m
Weight	4.8t



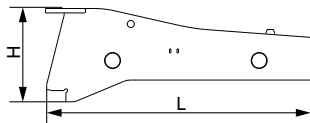
### Superlift counterweight frame ×1

Length (L)	9.25m
Width (W)	2.64m
Height (H)	1.78m
Weight	32.0t



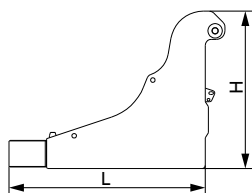
### Superlift counterweight strut ×1

Length (L)	13.30m
Width (W)	3.00m
Height (H)	1.81m
Weight	7.6t



### Carbody counterweight tray ×2

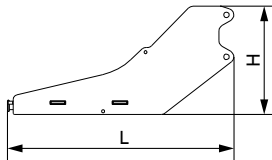
Length (L)	2.97m
Width (W)	5.43m
Height (H)	1.06m
Weight	20.0t



### Rear counterweight tray ×2

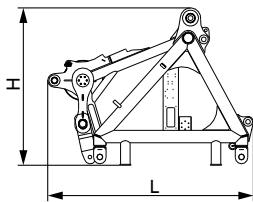
Length (L)	3.00m
Width (W)	2.66m
Height (H)	2.40m
Weight	15.0t

## Transport Dimension



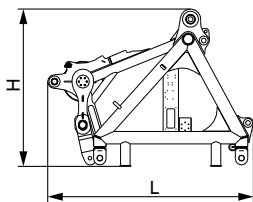
### Additional tray of rear counterweight ×1

Length (L)	3.65m
Width (W)	2.95m
Height (H)	1.74m
Weight	6.7t



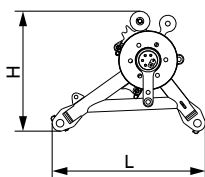
### Connecting tip (H9A) ×1

Length (L)	3.73m
Width (W)	2.99m
Height (H)	2.77m
Weight	6.8t



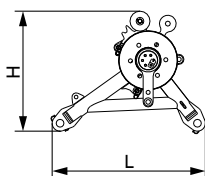
### Connecting tip (H9B) ×1

Length (L)	3.73m
Width (W)	2.99m
Height (H)	2.77m
Weight	5.6t



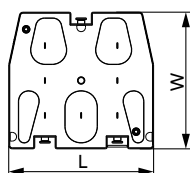
### Pulley block (800t) ×2

Length (L)	1.84m
Width (W)	1.67m
Height (H)	1.44m
Weight	2.6t



### Pulley block (500t) ×2

Length (L)	1.84m
Width (W)	1.67m
Height (H)	1.44m
Weight	2.0t



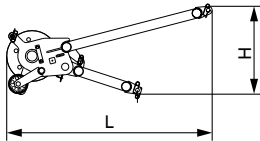
### 10t counterweight ×60

Length (L)	2.40m
Width (W)	2.85m
Height (H)	0.484m
Weight	10.0t

Remarks: 4 blocks for carbody counterweight, 20 blocks for machine rear counterweight, 36 blocks for superlift counterweight.

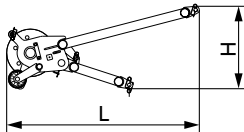


## Transport Dimension



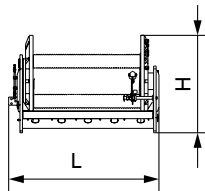
### Extension jib (16 t) ×1

Length (L)	2.60m
Width (W)	1.07m
Height (H)	1.11m
Weight	0.45t



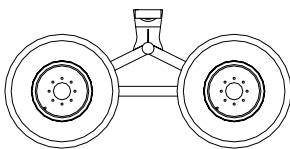
### Extension jib (50t) ×1

Length (L)	2.60m
Width (W)	1.07m
Height (H)	1.11m
Weight	0.6t



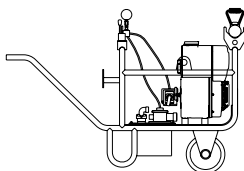
### Main load hoist winch ×2

Length (L)	2.00m
Width (W)	1.28m
Height (H)	1.30m
Weight	8.3t



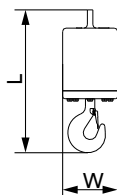
### Trolley ×1

Length (L)	3.30m
Width (W)	2.00m
Height (H)	1.61m
Weight	1.9t



### Portable power pack ×1

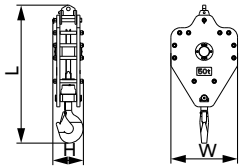
Length (L)	1.55m
Width (W)	0.70m
Height (H)	1.09m
Weight	0.2t



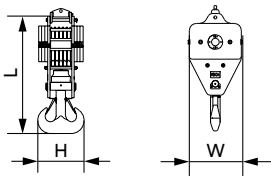
### 18T ball hook ×1

Length (L)	1.30m
Width (W)	0.50m
Height (H)	0.50m
Weight	1t

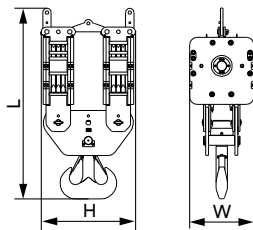
## Transport Dimension



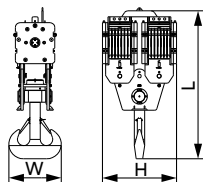
50T hook ×1	
Length (L)	2.20m
Width (W)	1.06m
Height (H)	0.50m
Weight	1.4t



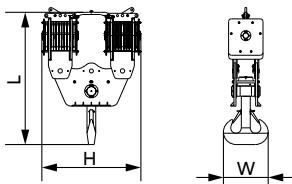
150T hook ×1	
Length (L)	2.40m
Width (W)	1.09m
Height (H)	0.95m
Weight	4.8t



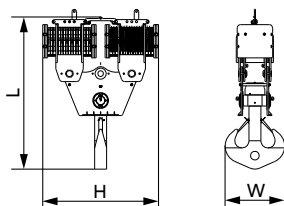
180T hook ×1	
Length (L)	3.20m
Width (W)	1.07m
Height (H)	1.60m
Weight	8.4t



350T hook ×1	
Length (L)	3.55m
Width (W)	1.33m
Height (H)	1.88m
Weight	10.4t

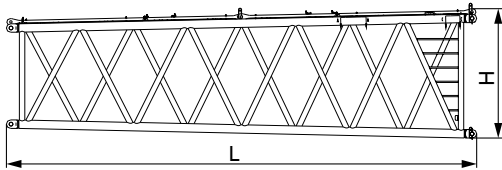


500T hook ×1	
Length (L)	3.93m
Width (W)	1.33m
Height (H)	2.94m
Weight	11.1t



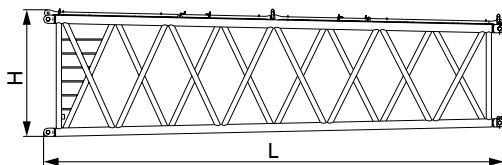
800T hook ×1	
Length (L)	4.82m
Width (W)	1.90m
Height (H)	3.66m
Weight	22.5t

## Transport Dimension



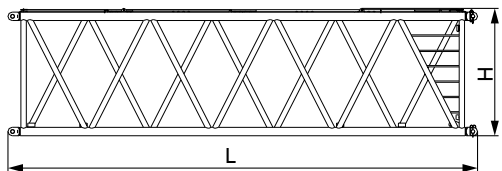
### 12m lower transition section (ZH4A) ×1

Length (L)	12.24m
Width (W)	3.56m
Height (H)	2.96m
Weight	10.2t



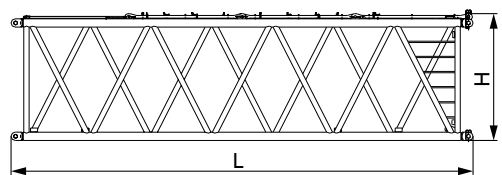
### 12 m upper transition section (ZH4B) ×1

Length (L)	12.24m
Width (W)	3.56m
Height (H)	2.96m
Weight	9.2t



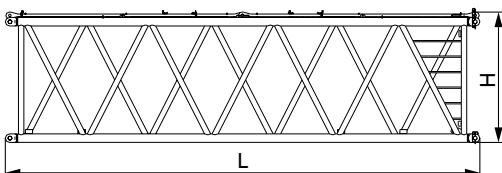
### 12m power boom insert A (ZH8A) ×1

Length (L)	12.24m
Width (W)	3.56m
Height (H)	2.96m
Weight	10.2t



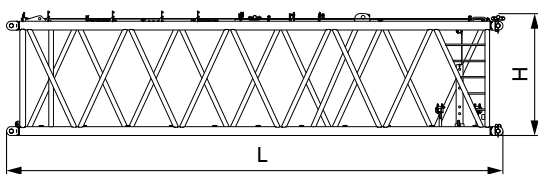
### 12m power boom insert B (ZH8B) ×1

Length (L)	12.24m
Width (W)	3.56m
Height (H)	2.96m
Weight	10.9t



### 12m power boom insert C (ZH8C) ×2

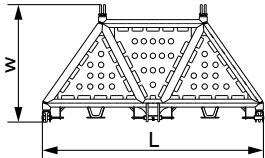
Length (L)	12.24m
Width (W)	3.56m
Height (H)	2.96m
Weight	10.2t



### 12m power boom insert D (ZH8D) ×3

Length (L)	12.24m
Width (W)	3.56m
Height (H)	2.96m
Weight	9.2t

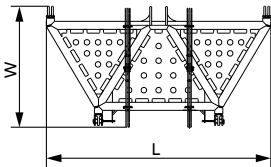
## Transport Dimension



### Super power boom lower transition section

×1

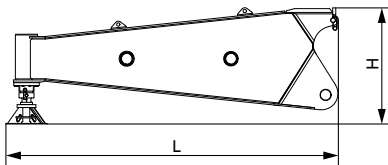
Length (L)	6.10m
Width (W)	3.24m
Height (H)	2.82m
Weight	6.4t



### Super power boom upper transition section

×1

Length (L)	6.10m
Width (W)	3.28m
Height (H)	3.0m
Weight	6.2t



### Side outrigger

×2

Length (L)	4.35m
Width (W)	1.25m
Height (H)	1.51m
Weight	2.6t

**Note:**

- 1.The transport dimensions of each part are schematic, may not be proportional to the real parts. The dimensions are designed value without package considered.
- 2.The weight is designed value that the actual manufactured part may deviate slightly.
- 3.The dimensions and weight of each part may upgrade along the time. The final values are subject to the new product.



# **SCC8000A** **SANY CRAWLER CRANE** **800 TONS LIFTING CAPACITY**

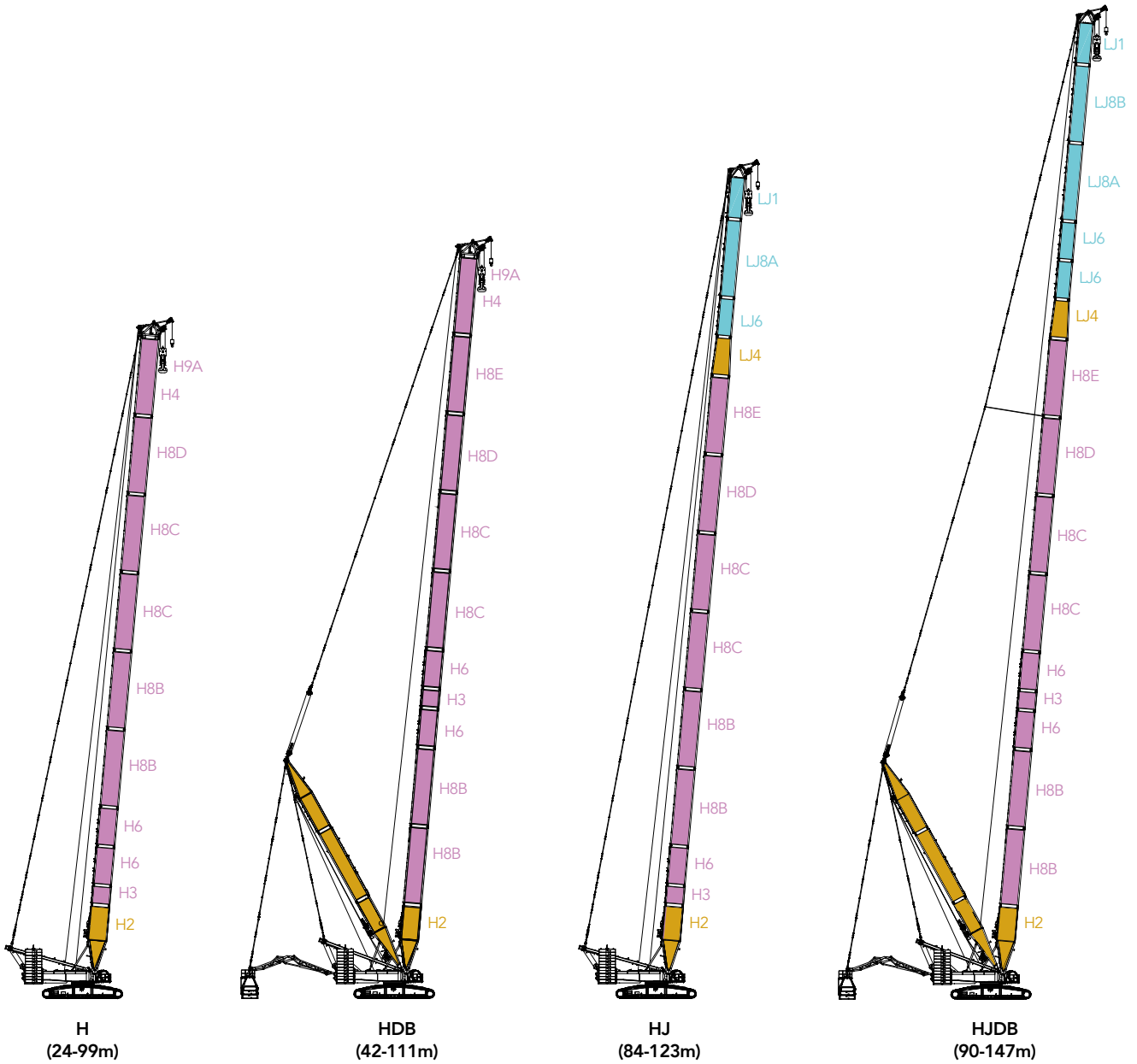
QUALITY CHANGES THE WORLD

## Configurations

- Page 30 Different Boom Configurations
- Page 34 H Configuration
- Page 37 HDB Configuration
- Page 40 HJ Configuration
- Page 43 HJDB Configuration
- Page 46 FJ Configuration
- Page 51 FJDB Configuration
- Page 56 HJFJ Configuration
- Page 61 HJFJ120 +15 Configuration
- Page 64 HJFJDB Configuration
- Page 69 HJDB\_5 Configuration
- Page 73 HJDB\_7 Configuration
- Page 76 HJDB\_9 Configuration
- Page 79 HJFJDB\_5 Configuration
- Page 87 HJFJDB\_7 Configuration
- Page 92 HJFJDB\_9 Configuration
- Page 97 HJFJDB\_SY3 Configuration
- Page 103 LJ Configuration
- Page 111 LJDB Configuration



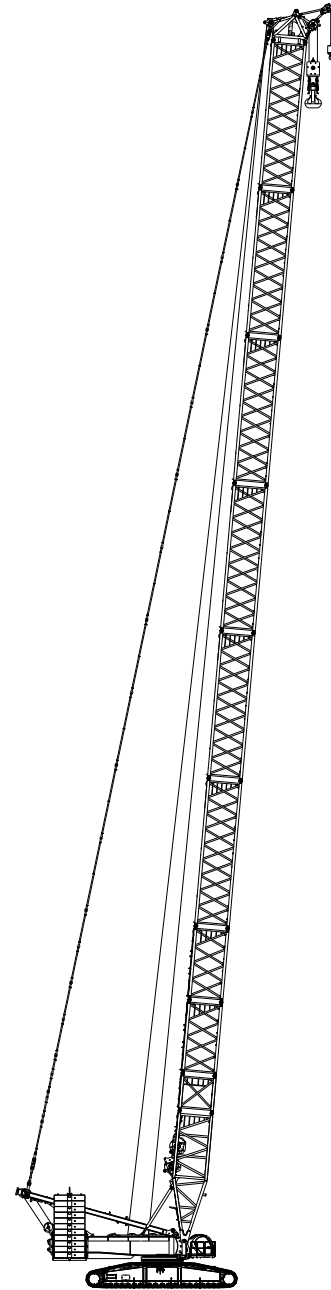
**Combination**



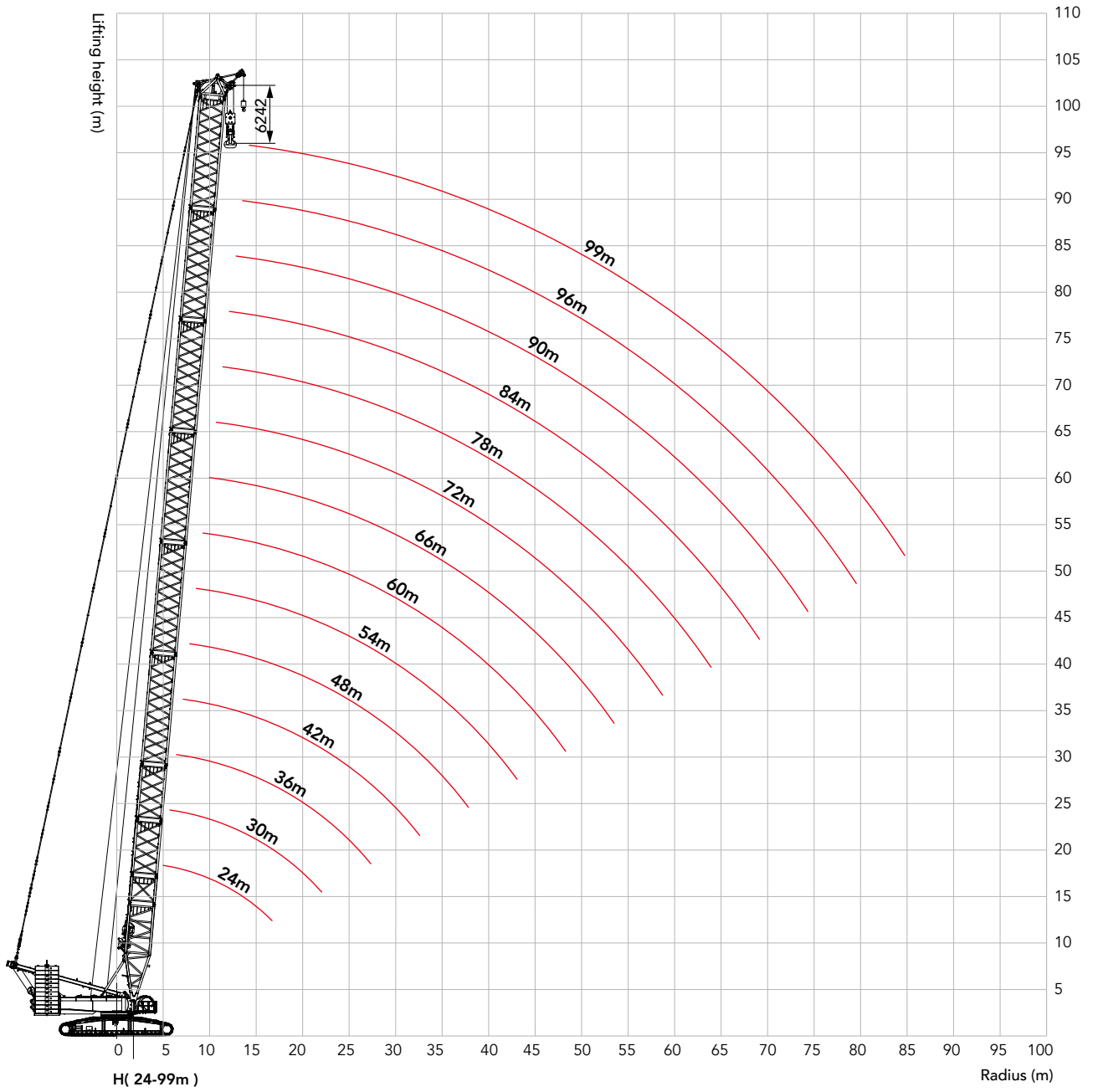
## Boom combination in H

Boom combination in H					
Boom length (m)	Insert				
	3m	6m	12mB	12mC	12mD
24	-	-	-	-	-
30	-	1	-	-	-
36	-	-	1	-	-
42	-	1	1	-	-
48	-	-	2	-	-
54	-	1	2	-	-
60	-	2	2	-	-
66	-	1	2	1	-
72	-	2	2	1	-
78	-	1	2	2	-
84	-	2	2	2	-
90	-	1	2	2	1
96	-	2	2	2	1
99	1	2	2	2	1

Note: The 24 m basic boom is composed of 10.5 m boom base, 12 m boom transition section and boom connecting tip.



# H working radius diagram





Unit: t

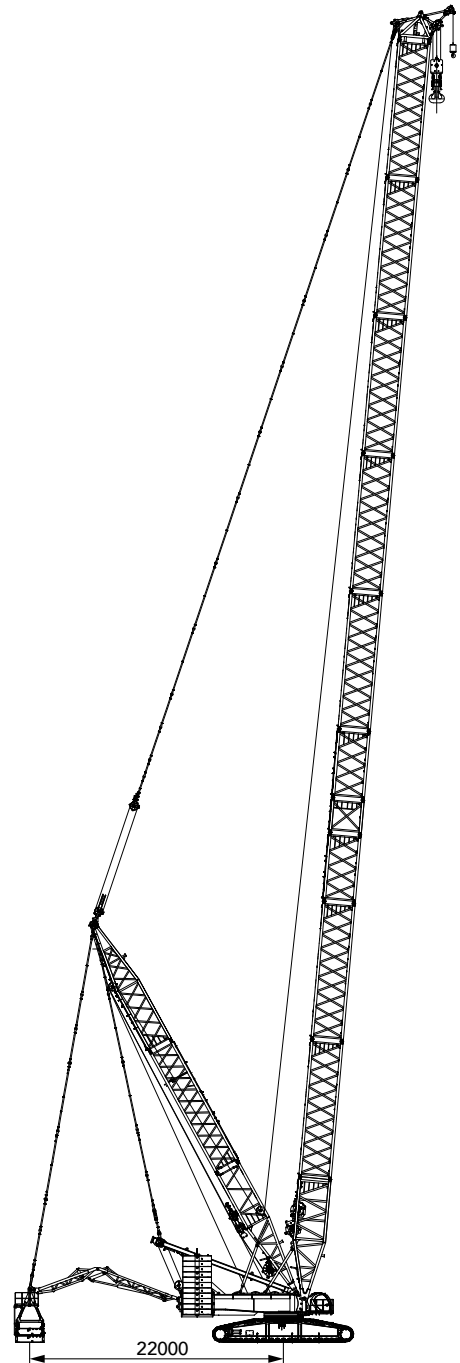
## Load Chart of H Configuration

SCC8000A Crawler Crane - H															
Boom length 24-99m, Rear counterweight (CWT) 230t, Carbody counterweight (CWT) 80t															
Radius (m)	24	30	36	42	48	54	60	66	72	78	84	90	96	99	Radius (m)
6	850														6
7	708	701	694												7
8	605	600	595	589	584										8
9	528	524	520	515	511	506	489								9
10	468	465	461	457	453	449	437	417	398						10
11	419	417	414	410	407	403	394	377	361	347	333				11
12	379	377	375	372	369	365	358	344	330	317	305	294	266		12
14	317	316	314	312	309	307	302	291	280	271	261	252	243	239	14
16	272	271	270	268	266	263	259	251	242	235	227	220	212	208	16
18	236	236	235	234	232	229	227	220	213	206	199	193	187	184	18
20	209	209	208	206	205	203	200	195	188	183	177	172	166	164	20
22	186	186	186	184	183	181	179	174	169	164	158	154	149	147	22
24		167	167	166	165	163	161	157	152	148	143	139	134	132	24
26		148	149	148	147	146	145	142	138	134	129	126	122	120	26
28		133	134	133	132	131	130	129	125	122	118	115	111	109	28
30			121	121	120	119	117	116	115	112	108	105	101	99.3	30
32			110	110	109	108	107	106	104	102	98.8	96.2	92.7	90.9	32
34				100	99.7	98.6	97.2	96.4	94.9	93.8	90.8	88.5	85.1	83.4	34
36				92	91.5	90.4	89	88.3	86.7	85.7	83.8	81.5	78.3	76.6	36
38				84.5	84.1	83.1	81.8	81.1	79.6	78.6	76.9	75.3	72.2	70.6	38
40					77.6	76.6	75.4	74.7	73.2	72.2	70.5	69.6	66.6	65.1	40
44					66.4	65.6	64.4	63.8	62.3	61.3	59.7	59	56.9	55.4	44
48						56.4	55.3	54.8	53.3	52.4	50.8	50.1	48.4	47.3	48
52							47.7	47.2	45.8	44.9	43.3	42.6	40.9	40.1	52
56								40.7	39.4	38.5	36.9	36.3	34.6	33.7	56
60									33.8	33	31.5	30.8	29.2	28.3	60
64									29	28.2	26.7	26.1	24.4	23.6	64
68										24	22.5	21.9	20.3	19.4	68
72											18.7	18.2	16.6	15.7	72
76												14.9	13.3	12.4	76
80													11.8	10.3	80
84														7.6	84

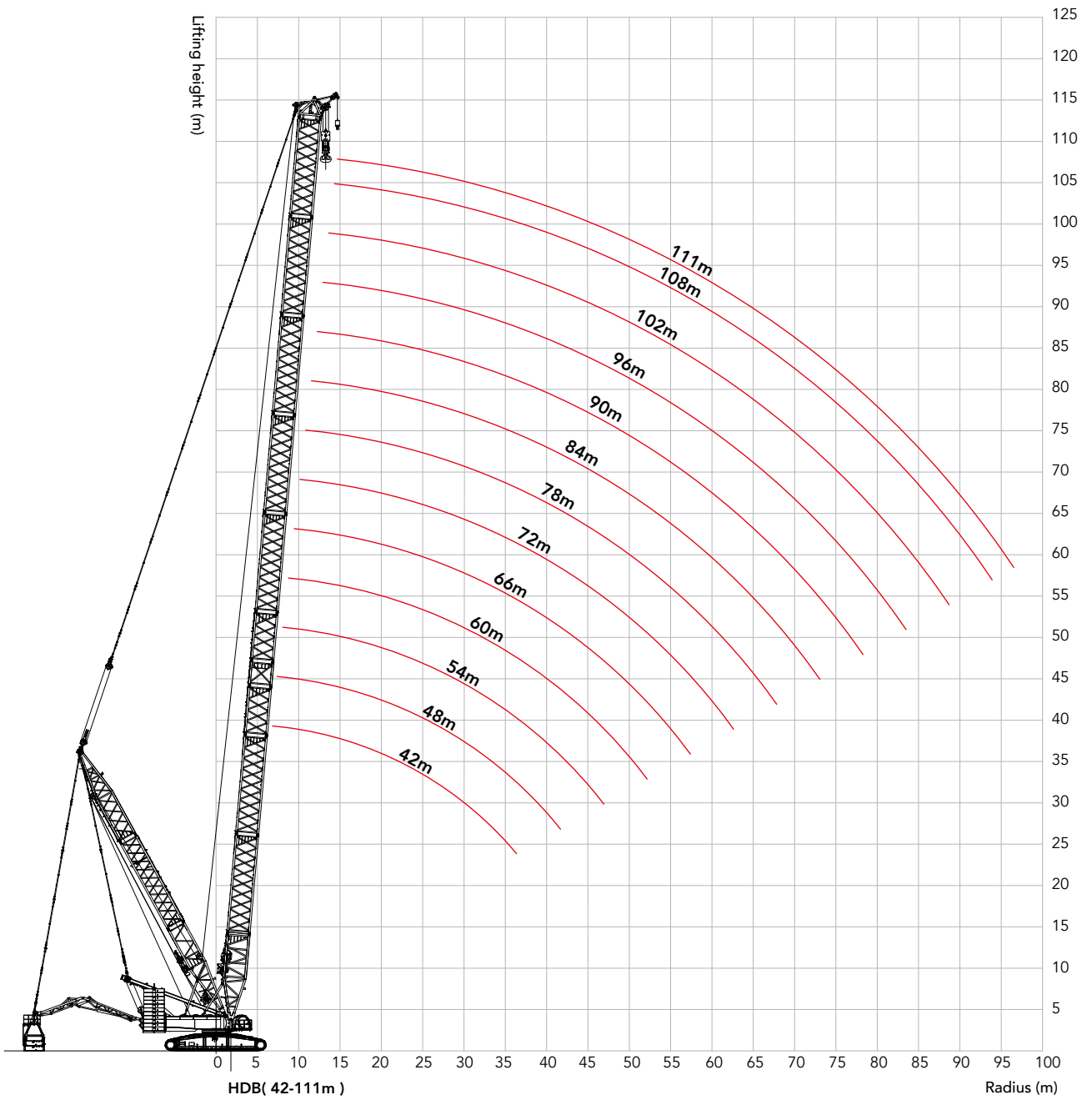
## Boom combination in HDB

Boom combination in HDB						
Boom length (m)	Insert					
	3m	6m	12mB	12mC	12mD	12mE
42	-	1	1	-	-	-
48	-	2	1	-	-	-
54	-	1	2	-	-	-
60	-	2	2	-	-	-
66	-	1	2	1	-	-
72	-	2	2	1	-	-
78	-	1	2	2	-	-
84	-	2	2	2	-	-
90	-	1	2	2	1	-
96	-	2	2	2	1	-
102	-	1	2	2	1	1
108	-	2	2	2	1	1
111	1	2	2	2	1	1

Note: The 10.5 m boom base, 12 m boom transition section and boom connecting tip are must.



## HDB working radius diagram



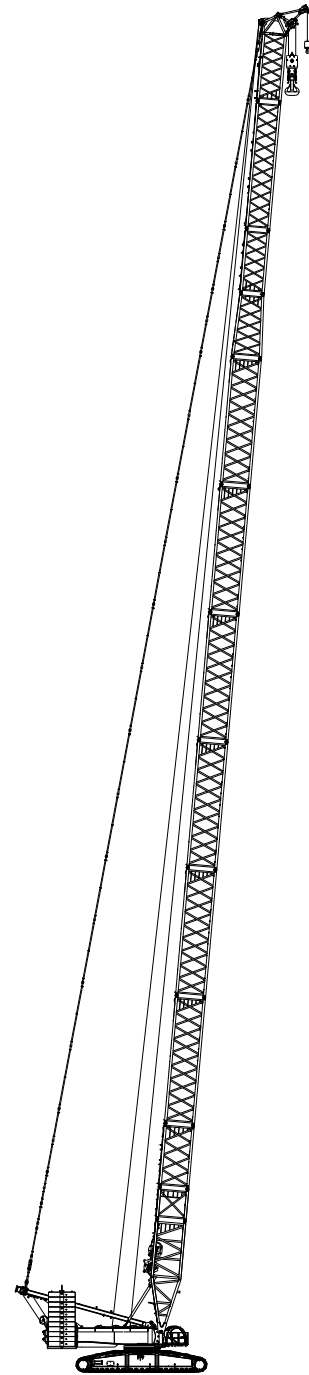
## Load Chart of HDB Configuration

SCC8000A Crawler Crane - HDB														
Boom length 42~111m, Superlift Radius 22m, Superlift CWT 390t, Rear CWT 230t, Carbody CWT 80t														
Radius (m)	42	48	54	60	66	72	78	84	90	96	102	108	111	Radius (m)
8	800*	792*												8
9	800*	791*	776*	754*										9
10	800*	796*	780*	758*	681*	577*								10
11	800*	800*	784*	760*	683*	578*	485*	419*						11
12	800*	800*	787*	768*	685*	580*	485*	419*	354*	311*				12
14	797	800*	797*	775	691*	581*	486*	420*	356*	311*	264*	236*	222*	14
16	675	751	688	669	647	585*	489*	422*	356*	312*	265*	235*	223*	16
18	614	634	634	588	571	550	492*	422*	357*	313*	265*	235*	222*	18
20	538	559	562	524	510	493	476	423*	358*	314*	265*	235*	222*	20
22	476	527	503	498	461	447	432	417	356*	312*	266*	235*	222*	22
24	450	473	455	452	420	408	396	382	357*	312*	265*	236*	223*	24
26	404	428	414	413	407	376	365	352	357*	312*	265*	235*	222*	26
28	364	389	400	379	375	367	338	327	336	312*	265*	235*	222*	28
30	350	377	368	350	348	341	315	305	313	303	264*	234*	221*	30
32	318	345	339	344	323	318	311	285	294	284	264*	234*	219*	32
34	288	316	313	319	302	297	292	268	276	268	260	232*	217*	34
36	278	310	308	297	299	279	274	267	261	253	246	230*	215*	36
38	251	285	286	277	281	262	259	252	247	239	233	225	213*	38
40		261	265	275	263	262	244	239	249	227	221	214	210	40
44		234	243	241	233	234	219	215	225	219	200	194	191	44
48			223	225	220	209	210	194	204	199	195	177	174	48
52				196	195	200	189	188	186	182	179	174	160	52
56					184	179	183	171	181	167	165	160	158	56
60						170	165	167	166	164	152	148	146	60
64						152	156	152	153	151	151	137	135	64
68							144	138	142	140	140	137	125	68
72								133	132	130	129	127	125	72
76									123	121	121	118	117	76
80									115	113	113	111	108	80
84										106	105	103	102	84
88											98.5	96.6	95.5	88
92												90.5	89.4	92
96												84.9	83.8	96

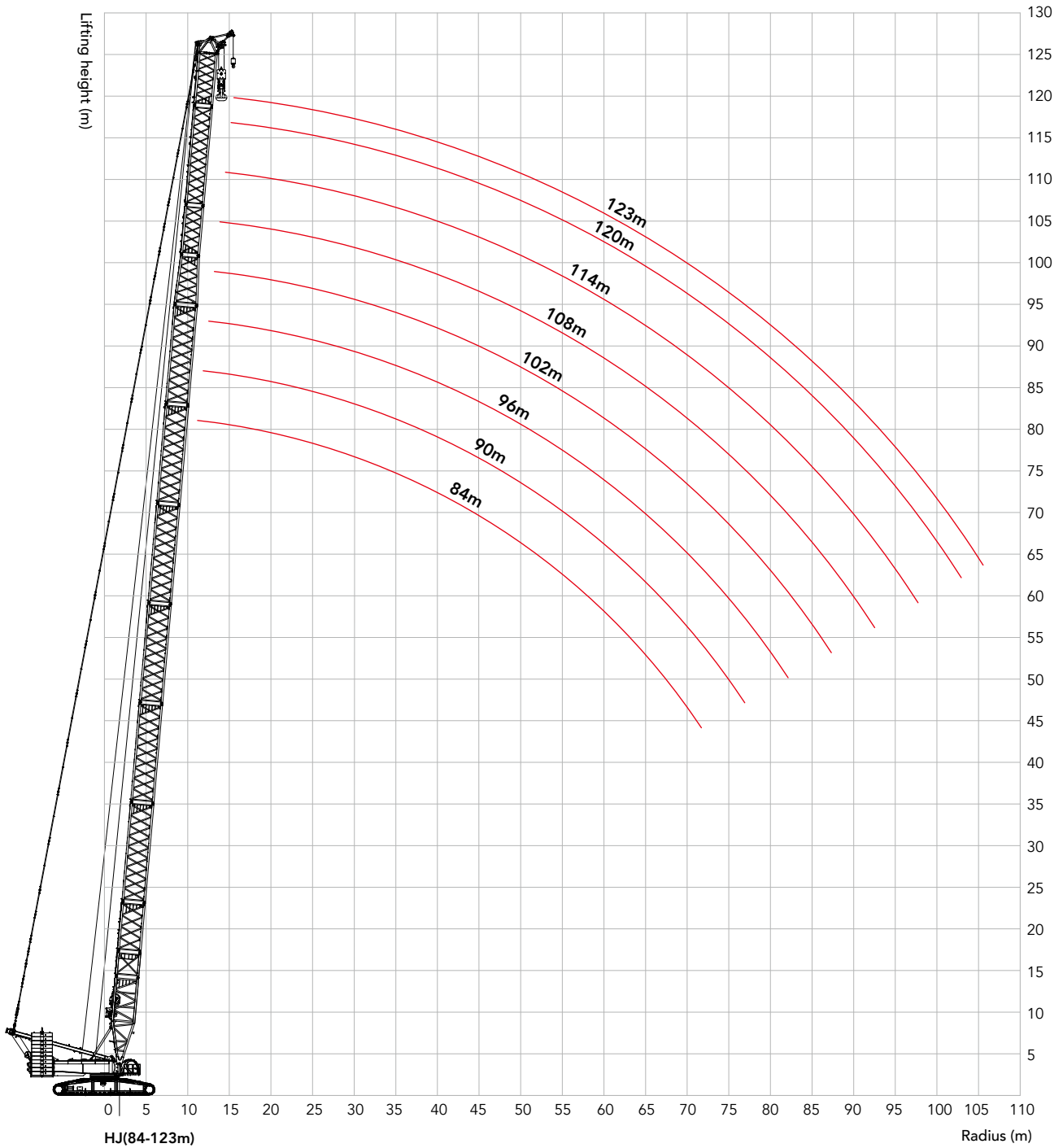
## Boom combination in HJ

Boom combination in HJ								
Boom length (m)	Boom insert						Jib insert	
	3m	6m	12mB	12mC	12mD	12mE	6m	12mA
84	-	2	2	1	-	-	-	1
90	-	1	2	2	-	-	-	1
96	-	2	2	2	-	-	-	1
102	-	1	2	2	1	-	-	1
108	-	-	2	2	1	1	-	1
114	-	-	2	2	1	1	1	1
120	-	1	2	2	1	1	1	1
123	1	1	2	2	1	1	1	1

Note: The 10.5 m boom base, 6 m tapered section and 7.5 m jib top are must.



### HJ working radius diagram



Unit: t

## Load Chart of HJ Configuration

SCC8000A Crawler Crane - HJ									
Boom length 84~123m Rear CWT 230t Carbody CWT 80t									
Radius (m)	84	90	96	102	108	114	120	123	Radius (m)
11	340	300							11
12	313	295	270						12
14	269	260	252	223	187	162	145	137	14
16	235	228	221	214	180	157	139	131	16
18	208	202	196	190	174	151	134	126	18
20	186	181	175	170	166	146	129	121	20
22	168	163	158	154	150	141	125	117	22
24	152	148	143	140	136	133	120	113	24
26	139	135	131	128	125	121	115	108	26
28	127	124	120	117	114	111	108	104	28
30	117	114	111	108	105	102	99	97.2	30
32	109	106	102	99.5	97.2	94.6	91.3	89.6	32
34	101	97.9	94.6	92.1	90	87.6	84.4	82.8	34
36	92.7	91	87.8	85.5	83.5	81.2	78.2	76.6	36
38	85.6	84.4	81.7	79.6	77.7	75.5	72.5	71	38
40	79.3	78.1	76.2	74.1	72.4	70.3	67.4	65.9	40
44	68.5	67.4	65.7	64.7	63.1	61.2	58.4	57	44
48	59.6	58.6	56.9	56	55.3	53.5	50.8	49.5	48
52	52.2	51.2	49.5	48.7	48.1	46.8	44.3	43	52
56	46	44.9	43.3	42.4	41.8	40.9	38.6	37.4	56
60	40.5	39.5	37.9	37	36.5	35.5	33.7	32.4	60
64	35.8	34.8	33.2	32.4	31.8	30.9	29.2	28	64
68	31.7	29.4	29.1	28.3	27.7	26.8	25.1	24.2	68
72	27.7	24.1	25.4	24.6	24.1	23.2	21.5	20.6	72
76		20	22.1	21.4	20.8	19.9	18.3	17.4	76
80		15.7	19.2	18.4	17.9	17	15.4	14.5	80
84			16.5	15.8	15.3	14.4	12.8	11.9	84
88				13.4	12.6	12	10.4	9.5	88
92					9.5	9.8	8.2	7.3	92
96						7.8	6.2	5.3	96
100						6			100