



# VERSATILITY FOR EVERY SITE.

PNEUMATIC TYRED ROLLER, MODEL BW 11 RH-5.





# MILLIONS OF KILOMETRES BEAR OUR SIGNATURE.

You build the best roads to travel speedily and safely. And to improve these journeys, we build the best machines. As part of the internationally leading FAYAT Group, BOMAG supplies the equipment for all road construction applications – from soil compactors, cold planers and recyclers; from asphalt rollers to pavers. For over 60 years, our company has helped write road construction history.

With our cumulative expertise we drive innovation and set the pace of an entire industry. BOMAG has developed a huge number of technologies, from systems for measuring and controlling compaction, such as the ECONOMIZER and ASPHALT MANAGER, through to technologies for reducing operating costs, like ECOMODE and the most effective screed heating on the paver market: MAGMALIFE. We offer solutions for a wide variety of applications.

We have BOMAG specialists working around the world and partners in more than 120 countries supporting you, from fitting out machines to solving the most demanding challenges on site.

We owe our power of innovation to more than 2,500 employees worldwide, their commitment and unique experience. Expertise which has made us the world market leader in compaction. The reason behind this success is our unconditional commitment to quality: during product development and production, in training our employees, and in providing a level of service which guarantees only the best on site support.











## WE ENHANCE YOUR PRODUCTIVITY.

### **ASPHALT COMPACTION REQUIRES THE BEST DESIGN ENGINEERS AT BOMAG.**

We have been developing, designing and building compaction equipment for almost 60 years. Our engineers are dedicated to making every new machine generation even better, more economical and productive than the previous one. And they always have one target: Every BOMAG machine must complete a customer's work more efficiently, conveniently and professionally.

Close contact to customers helps us find solutions which really increase productivity, and enable them to complete every job precisely to specification.

BOMAG was the first manufacturer to launch a pneumatic tyred roller onto the market that combines conventional compaction with a state-of-the-art hydrostatic drive – and that was 20 years ago. But the latest model is also ideal for use in both earthworks and asphalt construction.

The roller can adapt to any compaction job and excels in terms of power and efficiency. Safety and ease of operation are priorities at BOMAG.



With an operating weight from 5 t, the BOMAG BW 11 RH-5 pneumatic tyred roller is the first choice for many applications. Whether with cab or ROPS, maximum productivity and operating comfort are always assured.

The expertise of our engineers and service support from our sales network are there to help you... worldwide. You can depend on legendary BOMAG quality. Because we only have one goal: to enhance your productivity.

# FLEXIBILITY FOR EVERY TYPE OF SITE.

## MAINTENANCE: EASY!

The hood opens fully without effort.  
No lubrication points.  
Fillers can be released simply under the access step. The vertical radiator requires no additional cleaning.

## EFFECTIVE BY DESIGN!

The well-thought-out design offers optimal driving characteristics with a low centre of gravity and even weight distribution.

## FLEXIBILITY: TOTAL!

Central articulated steering, hydrostatic drive with three speeds, functional frame design: perfect features for highly flexible use and manoeuvrability.





**OPERATION: SUPER EFFICIENCY!**

Profitable work and great ergonomics: Cab with extra large glass windows, clearly arranged console, intuitive operation – the operator can relax and concentrate on the task at hand.

**COST-EFFECTIVENESS:  
HIGH!**

High speeds up to 20 km/h mean large surface coverage.

Ideal for surface chipping.



# PERFORMANCE THAT COMES FROM WITHIN.

*In day-to-day work, the cab is not only the driver's workplace for hours, but also his "snug". BOMAG has always placed great focus on the quality of the cab, which is a major feature when it comes to ergonomics and ease of use.*

## THE BEST OUTLOOK.

Climb aboard and feel the comfort. The BW 11 RH-5 has the ultimate cab. The extra large windows offer the driver a perfect view of the working area, and greater on-site safety.

## EVERY MOVE IS RIGHT.

Roller operation is intuitive and fast. The self-explanatory functions make the roller easy to handle. The driver has all the indicators and operating controls in reach and in sight. That means faster operations and even better ease of operation.



The room in the highly spacious cab is in a class of its own. For ideal work conditions.



If no heating or air conditioning is required, the BW 11 RH-5 can also be delivered with ROPS/FOPS.

## STEERED INTO THE RIGHT LANE.

The BW 11 RH-5 can be steered with precision. Thanks to the "soft reverse" function, reversing is easy.

## JUST TAKE A SEAT.

Together with the armrests and travel lever, the seat make up one functional unit. It can be turned 20 degrees to either side.





The driver is always happy to take over steering the BW 11 RH-5. Everything is in full view and all the operating controls are arranged clearly.



# SAY GOODBYE TO LONG WAITING.

*A powerful working machine has to be able to do one thing above all: roll, roll and roll again. Downtime needs to be kept to an absolute minimum. With its easy maintenance, the BW 11 RH-5 meets this requirement perfectly.*



The hinged engine hood can be opened wide allowing fast, unobstructed access to the engine.

## **FASTER SERVICE AT LESS COST.**

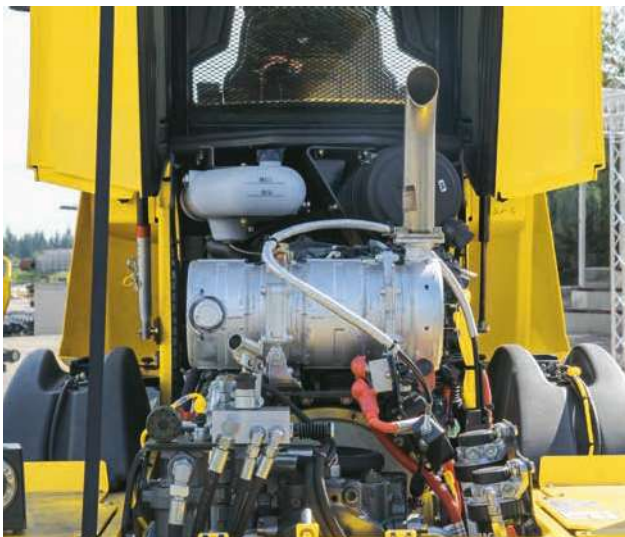
The engine hood opens effortlessly and fully. To make maintenance as easy as possible, the engine and all service points are readily accessible from the ground. After all, you have more important things to do.

## **SMART DESIGN DETAILS.**

The maintenance-free articulated joint is not welded to the frame. Also, the smart frame design guarantees long service life.

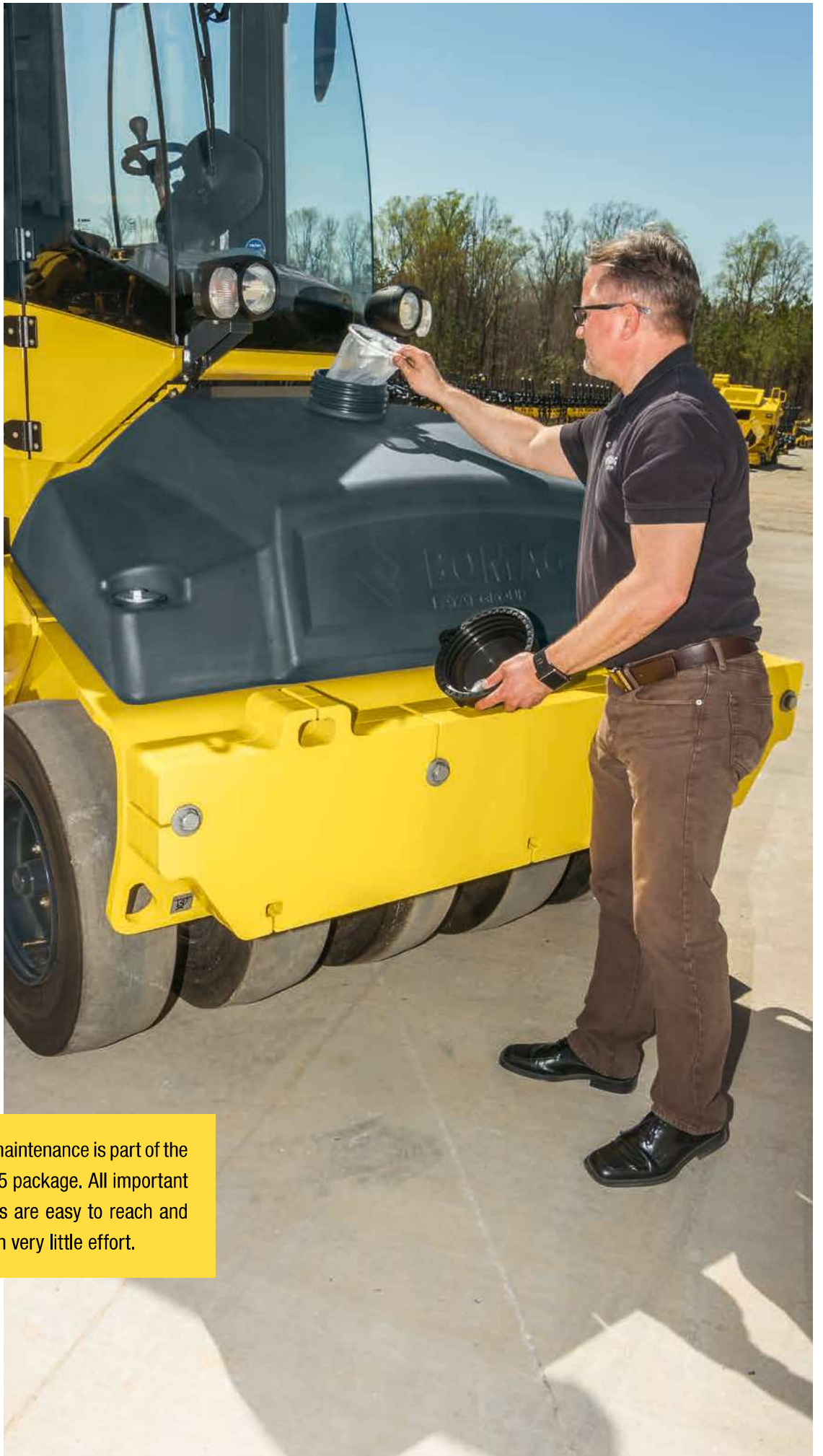
## **COOL RADIATOR.**

The radiator is in an excellent vertical position right behind the cab. This means it stays clean and doesn't need extra cleaning. Maintenance-free SAHR brakes also increase the ease of service on this model.



All engine service points are easy to access. So maintenance work can be performed quickly and easily.





Easy, fast maintenance is part of the BW 11 RH-5 package. All important components are easy to reach and service with very little effort.



The increased wheel load from the ballast enables the BW 11 RH-5 to achieve high depth effect in earthworks and asphalt construction and excellent sealing of surfaces.



# CLEVER FRAME DESIGN.

*This new pneumatic tyred roller is out of the ordinary in many respects. In order to increase stability the ballast compartments have been lowered significantly together with the machine's centre of gravity. To make maintenance as easy as possible, the engine and all service points are readily accessible from the ground.*

## FUNCTIONAL DESIGN.

The functional frame design of the BW 11 RH-5 provides the basis for this pneumatic tyred roller's superior driving characteristics. A machine's centre of gravity is well known to affect its stability. The lower it is, the more stable the unit. BOMAG engineers have strategically placed the ballast compartments to ensure a lower centre of gravity, providing a high level of stability and even distribution of weight. The BW 11 RH-5's clever frame design offers the optimum conditions for perfect work results.

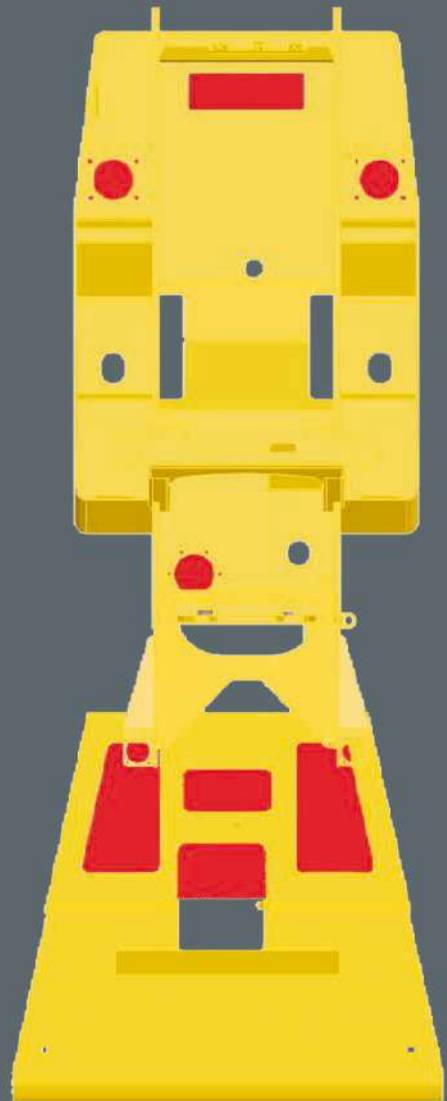
## BALANCED WEIGHT RATIOS.

Precisely balanced weight distribution directly affects a range of roller characteristics. Handling, acceleration, traction and the service life of components also play a role. The result is perfect driving characteristics. And superior surface quality and compaction.



To increase stability, the ballast compartments have been positioned extremely low, as shown here above the front axle.

## DISTRIBUTION OF THE BALLAST COMPARTMENTS



# WHERE GREAT PRODUCTIVITY COUNTS.

*The BW 11 RH-5 combines conventional compaction with a state-of-the-art hydrostatic drive. The perfectly tuned, three-stage drive allows different driving methods for gradients and flat sections. This provides a whole new level of productivity.*

## **TUNED DRIVE.**

The state-of-the-art hydrostatic drive of the BW 11 RH-5 is in a class of its own. Whether driving fast or slow, on steep inclines or for high surface coverage: three speeds allow the right choice for any application.



All important operating controls can easily be reached and selected. Every move is just right.

## **ALL GOOD THINGS COME IN THREES.**

The three speeds mean the driver can choose the right performance for each application. The first gear guarantees the drive maximum drive gradeability – perfect for compacting gradients. The second gear can be used universally for the most varied of applications. But whenever high productivity is required, the third gear provides top speed. A typical example is chipping work.

## **HIGHLY RESPONSIVE MACHINE USE.**

The BW 11 RH-5's hydrostatic steering system is equipped with a steering wheel like in cars. The hydrostatic drive allows for highly responsive driving control, even on sharp bends, as well as easy manoeuvring thanks to the smooth reversing provided by the “soft reverse” feature.





The three travel ranges on the hydrostatic drive allow high gradeability and maximum speed.



**ULTIMATE ACCURACY:  
CENTRAL ARTICULATED STEERING.**

The centrally positioned articulated steering allows the wheels to keep the entire roller width on the ground when turning. The wide steering angle of 35 degrees enables the roller to navigate the tightest of bends. This means perfect compaction results in fewer passes.

Complete ground contact: the articulated joint can also move an additional 10 degrees. This is how to achieve even compaction on uneven surfaces.

# POWERFUL, RELIABLE AND EFFICIENT.

*The BW 11 RH-5 is made for top performance – state-of-the-art engine technology meets the strictest emissions standards in compliance with Stage IV/Tier 4 final. The Tier 3 model is available for use worldwide.*

The water-cooled 4-cylinder KUBOTA engine on the BW 11 RH-5 delivers ample power using the combination of direct fuel injection, turbocharger and 4-valve technology. The need for low fuel consumption has also been met: This model features the ECOMODE light version, which automatically reduces engine speed in the braked position. What's more, the driver can control the speed as needed with a switch (min./max).

The Stage 4/Tier 4 final version incorporates a diesel oxidation catalyst (DOC) to reduce pollutants. Maintenance is minimal, because the filter regenerates automatically during operation.

The modern engine produces lower emissions, with low wear and smooth operation. And it's quieter! This benefits site personnel, and is well-received in urban projects.



## BENEFITS:

- Reduced noise eases the load on drivers and the environment.
- Automatic engine deceleration when braking lowers fuel consumption.



# COST-EFFECTIVE CHIP SEALING.

*Chip sealing is a cost-effective technique for renewing a road surface. The high surface area coverage and excellent rolling quality make this new pneumatic tyred roller your operating machine of choice for this type of work.*

## **THE FIRST CHOICE.**

Thanks to the high speeds possible, the BW 11 RH-5 is also the first choice when it comes to chipping. Chip sealing is currently the most cost-effective method of renewing a road surface. In terms of service life and effectiveness it is comparable to other methods, but costs significantly less – up to 25% of the cost of road surface course renewal.

## **ROAD REJUVENATION.**

Chip sealing is applied on top of an existing surface to protect it from tyre damage and the sun, and to prevent water ingress. This extends the service life of roads. At the same time, the macro texture increases surface skid resistance. The roller can be used to compact base material, sand and asphalt.

## **HOW IT'S DONE.**

For chip sealing, an asphalt binder is sprayed onto the road and covered with a single-size aggregate chip layer. The roller takes care of the sealing. The new surface is then rolled to bed the aggregate chippings. Excess chips are removed after a curing period of 24 hours.



The BW 11 RH-5 provides perfect compaction and a smooth and even surface finish.



The top speed of 20 km/h offers excellent surface coverage.

# ACCESSORIES WITH ADDED VALUE.

*The BW 11 RH-5 pneumatic tyred roller can be fitted with a first-class range of optional extras. Geared to practical work situations, additional benefits are guaranteed.*



## IT'S YOUR CHOICE:

### WATER SPRAYING SYSTEM.

The tyres need moistening, but the water supply must be regulated.

Once warm, very little water is needed. The BW 11 RH-5 offers a choice of 5 spraying levels. In addition, the scrapers can be folded away individually, which also increases work output.



### THERMAL APRONS.

Thermal aprons ensure fast heating of the tyres while maintaining an even tyre temperature. This also prevents asphalt pick-up, which can damage surfaces.



### BALLAST.

The BW 11 RH-5's wide range of applications may require different machine weights. The ballast options available enable the model to handle a wide variety of work. Choose between a 7 t and 9 t version for chipping and asphalt applications, or the 11 t version for sand and base compaction (only available with ROPS).



# THE PERFECT CHOICE FOR ASPHALT WORK.

## TYRE INFLATION SYSTEM.

The success of a compaction job largely depends on selecting the correct contact pressure. An external compressor can be used to inflate the tyres from a central adjustment point. This ensures that the tyres contact the surface evenly, producing perfect results.



## TEMPERATURE SENSOR.

The asphalt temperature sensor provides a constant overview of the asphalt temperature, indicating if the material is too hot or cold. The operator therefore keeps the roller in areas where the material has the correct rolling temperature, and avoids wasting time on material that is too cold.



## ADDITIONAL LIGHTING.

Some jobs require night work, especially when deadlines are tight, or during the autumn and winter season. The optional side lights on the BW 11 RH-5 provide clear visibility, especially to the sides, during over-night operations.





## MODEL OVERVIEW.

*BW 11 RH-5, the new pneumatic tyred roller generation in the 5.2t to 11t performance class, offers highly cost-effective performance on earthworks and asphalt, for compacting stabilised soil layers, and for rolling chippings on surface dressing work.*







Model	Version	Operating weight [kg]	Wheel load [kg]	Working width [mm]	Power [kW]
BW 11 RH-5	ROPS	5,300	589	1,727	55.4
BW 11 RH-5	Cabin	5,500	611	1,727	55.4
BW 11 RH-5	7 t ballast option	7,000	778	1,727	55.4
BW 11 RH-5	9 t ballast option	9,000	1,000	1,727	55.4
BW 11 RH-5	11 t ballast option	11,000	1,222	1,727	55.4

Technical modifications reserved. Machines may be shown with options.









**BOMAG**  
FAYAT GROUP

## **PERFECTION IS NO ACCIDENT.**

All our know-how is invested in every roller. Down to the fine details. And you can add your own experience and know-how. The result: a winning partnership. Every time.

**BOMAG**  
FAYAT GROUP

**BW 112 R II**

Head Office / Hauptsitz:

**BOMAG**  
Hellerwald  
56154 Boppard  
GERMANY  
Tel. +49 6742 100-0  
Fax +49 6742 3090  
info@bomag.com

**BOMAG Maschinen-  
handels-gesellschaft m.b.H.**  
Klausenweg 654  
2534 Alland  
AUSTRIA  
Tel. +43 2258 20202  
Fax +43 2258 20202-20  
austria@bomag.com

**BOMAG MARINI EQUIPAMENTOS LTDA.**  
Rua Comendador Clemente Cifali, 530  
Distrito Industrial Ritter  
Cachoeirinha – RS  
BRAZIL  
ZIP code 94935-225  
Tel. +55 51 2125-6677  
Fax +55 51 3470-6220  
brasil@bomag.com

**BOMAG (CANADA), INC.**  
2233 Argentia Road, East Tower  
Suites 302  
Mississauga, ON, Canada  
L5N 2X7  
Tel. +1 800 782 6624  
Fax +1 905 361 9962  
canada@bomag.com

**BOMAG (CHINA)**  
Compaction Machinery Co. Ltd.  
No. 2808 West Huancheng Road  
Shanghai Comprehensive  
Industrial Zone (Fengxian)  
Shanghai 201401  
CHINA  
Tel. +86 21 33655566  
Fax +86 21 33655508  
china@bomag.com

**BOMA Equipment  
Hong Kong LTD**  
Wayson Commercial Building  
28 Connaught Road West  
Sheung Wan  
HONG KONG  
Tel. +86-20-8136-1380  
Fax +86-20-8136-1062  
bomahk@bomag.com

**BOMAG France S.A.S.**  
2, avenue du Général de Gaulle  
91170 Viry-Châtillon  
FRANCE  
Tel. +33 1 69578600  
Fax +33 1 69962660  
france@bomag.com

**BOMAG (GREAT BRITAIN), LTD.**  
Sheldon Way  
Larkfield, Aylesford  
Kent ME20 6SE  
GREAT BRITAIN  
Tel. +44 1622 716611  
Fax +44 1622 710233  
gb@bomag.com

**BOMAG Italia Srl.**  
Via Roma 50  
48011 Alfonsine  
ITALY  
Tel. +39 0544 864235  
Fax +39 0544 864367  
italy@bomag.com

**FAYAT BOMAG Polska Sp. z o.o.**  
Ul. Szyszkowa 52  
02-285 Warszawa  
POLAND  
Tel. +48 22 482 04 00  
Fax +48 22 482 04 01  
poland@bomag.com

**FAYAT BOMAG RUS OOO**  
141400, RF, Moscow region  
Khimki, Klayazma block, h. 1-г  
RUSSIA  
Tel. +7 (495) 287 92 90  
Fax +7 (495) 287 92 91  
russia@bomag.com

**BOMAG GmbH**  
300 Beach Road  
The Concourse, #18-06  
Singapore 199555  
SINGAPORE  
Tel. +65 6 294 1277  
Fax +65 6 294 1377  
singapore@bomag.com

**BOMAG Americas, Inc.**  
125 Blue Granite Parkway  
Ridgeway SC 29130  
U.S.A.  
Tel. +1 803 3370700  
Fax +1 803 3370800  
usa@bomag.com

