



# SCC5500A

## SANY Crawler Crane

### 550 Tons Lifting Capacity

Quality Changes the World



**Max. lifting moment: 6600t·m**  
**Longest boom: 84m**  
**Longest boom+jib: 84m+84m**

The parameters and diagrams in the brochure is only for reference, which is subject to further update in real machine.

■ [www.sany.com.cn](http://www.sany.com.cn)



**Crawler Crane Series**  
**SCC5500A**

P03	Main Characteristics	<ul style="list-style-type: none"> <li>▪ Product Specification</li> <li>▪ Safety Devices</li> </ul>
P09	Technical Parameters	<ul style="list-style-type: none"> <li>▪ Major Performance &amp; Specifications</li> <li>▪ Outline Dimension</li> <li>▪ Transport Dimensions</li> <li>▪ Transport Plan</li> <li>▪ Self-Assembly Plan</li> </ul>
P26	Cofigurations	<ul style="list-style-type: none"> <li>▪ Configuration</li> <li>▪ HJFJ-3 Configuration</li> <li>▪ HJFJDB-6 Configuration</li> <li>▪ H Configuration</li> <li>▪ HDB Configuration</li> <li>▪ HJ Configuration</li> <li>▪ HJDB Configuration</li> <li>▪ LJ Configuration</li> <li>▪ Working Radius in LJDB</li> </ul>



**SCC5500A**  
**SANY CRAWLER CRANE**  
**550 TONS LIFTING CAPACITY**

QUALITY CHANGES THE WORLD

## Main Characteristics

- Page 04 Product Specification
- Page 07 Safety Devices



## Product Specification



### Engine

- Model: WP Diesel engine(Chinese off-highway Tier III Emission Standard);
- Type: water-cooled, vertical in-line 6 cylinders, direct injection, turbo-charger, intercooler, complied with Chinese Off-highway Tier III Emission Standard;
- Displacement: 12.54L;
- Rated power: 390kW/2100rpm;
- Operation power: 382kW/1800rpm;
- Max. Torque: 2300N·m/(1200rpm-1600rpm);
- Starter: 24V-8.5kw;
- Batteries: Four 12V×180Ah capacity batteries, connected in series and then in parallel;
- Fuel tank capacity: 1000L.

### Electrical Control System

- Self-developed SYIC-I integrated control system is adopted with higher integration, precise operation and reliable quality;
- Control system consists of power system, engine system, main control system, LMI system, auxiliary system and safety monitoring system;
- Main electrical components are from internationally or industrially well-known brands, and they can perform stably in such bad environment as in severe low or high temperature, plateau, and sandstorms. The design with multi-stage safety limits and kinds of safety signal indicators, totally complies with CE Standard;
- LMI, combined monitors and closed circuit monitor are directly visible to operator. LMI detects the lifting moment and other status; combined monitors display operation conditions, limited status under control and alarms; closed circuit monitor monitors working conditions of the winch and rear parts. For armrest boxes at both sides, there are three operation levers, and the button switches the control functions, so the function elected and respective operating range of the lever will appear on the monitors;

### Hydraulic System

- Main pumps: five close piston pumps of electronic proportion are adopted to provide oil supply for main actuators of main machine;
- Assisting pump: electronic proportion open piston pump, providing oil for assisting cylinder;
- Back-stop pump: load-sensitive feedback pump, providing oil for back-stop system;
- Gear pump: dual-gear pump for oil-boosting system, oil radiator, A/C control circuit;
- Control: closed main pump adopts electronically controlled system, and the electronic lever controls the closed the pump and variable-placement motor;
- Rated pressure of main system: 35MPa;
- Oil boosting system: 3.5 MPa;
- Hydraulic Tank Capacity: 800L;
- Components: hydraulic system of load hoisting, traveling, swing, hoisting and luffing, servo, anti-backstop, cooling, aux. system. Main components are all imported originally;
- Features: Closed circuit is adopted for all load hoisting hydraulic, traveling hydraulic, hoisting and luffing hydraulic and swing hydraulic system, featured by saving energy, high-efficiency, fast-reaction, low heat emission, and long service life;
- Servo hydraulic system adopts electronic proportion controlled components for accurate and smart control;
- Backstop hydraulic system adopts external-controlled releasing balance valve on the hydraulic, safety and reliable;
- Cooling system is featured with high radiating power and excellent cooling result.

### Cab

- Fully-enclosed steel frame structure and large area of glass window at front, sides and top make brightened cab with broaden view. The floating, damping and de-noising, and multi-stage adjusted seat, and air conditioner enable better operating experience. There are control lever, control button and ignition lock fitted in the right and left armrest box and assisting control box. The low noise (less than 85dB), the ergonomically designed seat and buttons realize more comfortable operation. The cab can tilt up from 0°~24° for broaden view and rotates to the front of the platform for convenient transport.

### Closed circuit camera system

- The camera system is fitted with two monitors and multi cameras, each monitor displaying four pictures at most, realizing real-time monitoring the rope rotating of the winch drum, lifting status of the superlifting counterweight and surrounding;
- The system is equipped with recording function, and longest reserving time can be up to 76 hours, providing reference to the operation and accident.





## Product Specification

### Main and Aux. Load Hoist Mechanism

- A variable hydraulic motor drives the planetary gear reducer to control the lifting and lowering of main hoists I and II. A good inching performance is provided. The highest speed can be realized through main hoist I and II. Synchronization function is designed. One hoist for load less than 250t, dual main hoists work at the same time for load exceeding 250t; When single rope pull of any main hoist is larger than 6t, the synchronization function acts, winching speed of out most layer reaches 140m/min, and the largest parts of line is 38. Multiple layers of wire rope on fold-line drum can avoid messing rope. The gearbox is quiet and efficient, with longer service life and convenient fuel change.

Main load hoist mechanism I	Drum diameter	630mm
	Rope speed on the outermost work layer	0~140m/min
	Steel rope diameter	28mm
	Steel rope length of main hoist I	870m
	Rated tension of single rope	17.8t
Main load hoist mechanism II	Drum diameter	630mm
	Rope speed on the outermost work layer	0~140m/min
	Steel rope diameter	28mm
	Steel rope length of main hoist II	870m
	Rated tension of single rope	17.8t

### Boom/Jib/Superlift Hoist Mechanism

- Including: luffing mechanisms of the boom, jib and superlift;
- Drums with fold-line grooves are adopted for all luffing devices. Hydraulic motor drives the planetary gear reducer with excellent infinitely variable displacement to realize multi-functions.

Boom hoist mechanism	Drum diameter	630mm
	Rope speed on the outermost work layer	(0~70)×2m/min
	Steel rope diameter	28mm
	Steel rope length of boom hoisting	600m
Jib luffing mechanism	Drum diameter	630mm
	Rope speed on the outermost work layer	0~110m/min
	Steel rope diameter	28mm
	Steel rope length of jib luffing	730m
Superlift mast luffing mechanism	Drum diameter	630mm
	Rope speed on the outermost work layer	0~110m/min
	Steel rope diameter	28mm
	Steel rope length of superlift luffing	800m

### Swing Mechanism

- Swing hydraulic system adopts dual motors and is driven by the the planetary reducer via gear. It can realize 360° swinging range, infinitely variable swing speed of 0~0.99r/min, and steady free flipping function,without shocking at start and stop.
- Swing ring: three-row roller external-engaged bearing.

### Carbody

- The hydraulic cylinder drives power pin to be connected with track frame to facilitate the assembly and disassembly. Frame structures are welded by high-strength steel. Larger chassis design greatly improves the stability of the crane;
- Carbody counterweight: Total weight:50t, each 25t at rear and front, including counterweight tray: 15t\*2, 10t standard counterweight block\*2.

### Crawler Assembly

- Track frame: each track frame is equipped with an independent travel driving device. A hydraulic travel motor drives the planetary gear reducer and realizes independent traveling through the transmission of driving wheel. There are 4-stage speeds: 0.33km/h, 0.55km/h, 0.77km/h, 1.00km/h. The travel system is configured with high and low speeds: sufficient traction is provided in low speed to to travel with 100% load, while faster job-site transfer is possible in high travel speed. Infinite variable speed can be realized in travel driving system;
- Track shoe: it is manufactured by advanced casting techniques and materials with high strength and good wear resistance. After assembled on the machine, the tension can be adjusted by a hydraulic jack with shims used to secure the crawler position.

### Operation Equipments

- All operation equipments adopt high-strength steel tubes and plates; the sheaves at boom tops and hooks are made of milled welded steel and nylon.

## Product Specification



### Counterweight

- Counterweight include carbody counterweight, rear counterweight, additional superlift counterweight rear counterweight, and the details are listed below:

Name	Quantity	Length (m)	Width (m)	Height (m)	Unit Weight (t)
Carbody counterweight tray	2	2.99	2.94	1.06	15
Carbody counterweight block	2	2.85	2.4	0.48	10
Rear counterweight tray	2	3.18	2.83	1.8	10
Rear counterweight block	18	2.85	2.4	0.48	10
Superlift counterweight tray	1	8.6	2.5	4.4	30
Superlift counterweight block	18	2.85	2.4	0.48	10
Additional rear counterweight block	1	4.12	2.95	1.92	7.15

### Boom

- The boom is a spatial lattice structure with equal section areas for inserts and tapered section areas for both ends. With pipes welded together, and boom tip and root strengthened with steel plates, it can better transfer the load;
- The length of the boom ranges from that (24m) of the base boom to the maximum length (84m) and it can be increased progressively by 6m;
- Composition: boom base 12m×1, transitional insert 10.5m×1, connecting section (boom top) 1.5m×1, insert section 6m×2, and insert section 12m×4;
- Optional offers: 3m boom(for wind energy configuration), 72m power boom(12m×6);
- The extension boom can install on the boom top.

### Fixed Jib

- The fixed jib is a spatial lattice structure with equal section areas for inserts and tapered section areas for both ends. With pipes welded together, and boom tip and root strengthened with steel plates, it can better transfer the load;
- The length of fixed jib is 12m, and with jib extension.

### Luffing Jib

- The luffing jib is a spatial lattice structure with equal section areas for inserts and tapered section areas for both ends. With pipes welded together, and boom tip and root strengthened with steel plates, it can better transfer the load;
- The length of the luffing jib ranges from 24m to 84m;
- Composition: jib base 9m×1, jib insert 6m×3, jib insert 12m×4, and jib top 9m×1; mixed transition insert 9m×1;
- The extension jib can install on the jib top.

### Superlift Device

- The superlift mast is a spatial lattice structure with equal section areas for inserts and tapered section areas for both ends. With pipes welded together, and boom tip and root strengthened with steel plates, it can better transfer the load;
- The superlift mast is 30m long;
- Composition: mast base 6m×1, insert section 6m×1, insert section 12m×1, and mast top 6m×1.

### Hook

- 6 kinds of hooks are available, and specific parameters are as follows:

Name	Max. Lifting Capacity	Quantity	Pulleys	Unit Weight (t)
500t hook	550t	1	2×9	10.9
350t hook	350t	1	2×7	10.5
180t hook	180t	1	2×3	7.95(remove 6.85t counterweight)
160t hook	160t	1	5	3.1
50t hook	50t	1	1	1.7
16t hook	16t	1	-	0.9

Note:

The 500t hook, 350t hook and 180t hook can be respectively decomposed to 250t hook, 175t hook and 90t hook.

For shield configuration, 160t hook of a single sheave is available.



## Safety Devices

### Operating Weight

- The operating weight is about 430t, including the Upperworks, lowerworks, rear counterweight of basic machine, carbody counterweight, 24m basic boom and 500t hook.

### Ground Bearing Pressure

- The average ground pressure of machine with basic boom is 0.34MPa.

### Gradeability

- The gradeability of machine with basic boom is 15%.

### Load Moment Limiter

- The proprietary load moment limiter independently -developed by Sany is adopted, which forms a network with other controllers through CAN bus line, so as to realize safe and reliable control. The load moment limiter can automatically detect the hoisting weight of the crane and the angle of the boom, and display the rated load capacity, actual load, working radius, and the allowable height of the hook;
- The load moment limiter system consists of a large-screen color display, a host computer, angle sensors, tension sensors, pressure sensors and other components.

### Over-hoist Protection of the Main and Auxiliary Hooks

- It is used to prevent the over-hoist of the hook. When the lifting hook is raised to a certain height, the limit switch will start working, and hook will be automatically cut off from moving up by the control system. Meanwhile, the display and the buzzer will give alarms. At this moment, only hook lowering is allowed to prevent over-hoist action.

### Over-release Protection Device of the Main and Auxiliary Hook

- It is used to prevent the wire rope over-release. When the wire rope is released to the last three wraps, the limit switch will start working, and the releasing of rope will be automatically stopped by the control system. Meanwhile, the display and the buzzer will give alarms. At this moment, only rope retraction is allowed to prevent over release action.

### Assembly/Work Mode Switchover

- In Assembly Mode, some of the safety devices cannot function properly, such as jib limit, boom angle limit in LML, and overload, so as to facilitate the crane assembly;
- In Work Mode, all safety devices can function properly.

### Boom Angle Limit

- When boom angle exceeding 85° and jib angle exceeding 75°, corresponding limit switch will be triggered, and the control system will automatically cut off the boom hoisting. Meanwhile, the display and the buzzer will give alarm. At this moment, boom/jib luffing winch won't hoist but it can still lower down;
- When the boom angle is less than 30° and jib angle less than 15°, the control system will automatically cut off the boom/jib from further lowering. Meanwhile, the display and the buzzer will give alarms. At this moment, boom/jib luffing winch won't be able to lower. This protection is automatically controlled by Load Moment Limiter.

### Back-stop Device

- The boom and the superlift mast are respectively equipped with a pair of back-stop cylinders. The high pressure of the cylinder shall be overcome when the boom tilts backwards, and high pressure oil will be supplemented automatically when the boom swings forwards to increase the tension and prevent the boom vibration and shaking back;
- The jib rear mast is equipped with a pair of back-stop cylinders, while the jib front mast is equipped with a pair of pneumatic cylinders to prevent the mast from the backward inclination and tension of the jib luffing wire rope.

### Brake of Hoisting Mechanism

- All hoisting brakes are spring loaded normally closed disc brakes, which are featured with large braking force, maintenance-free, safe and reliable use, and long service life.

### CCTV Monitoring System

- It can be used to monitor the winding conditions of wire ropes of each hoisting mechanism, the conditions of superlift weight, and conditions around the equipment.

## Safety Devices



### Fault Auto-Diagnosis System

- Faults can be conveniently eliminated based on the fault code.

### Black Box

- It is able to record the operation data and machine movement, and analyze the remaining running conditions and service life of machine based on the actual performance.

### Pharos

- It is mounted on the top of the boom/jib and alerts in air during night.

### Anemometer

- It is mounted on the top of the boom/jib to monitor the wind speed in real time and display relative data on the monitor.

### Electronic Level Indicator

- It displays the tilting angle of the crane on the monitor in real time and protects the safe operation of the crane.

### Lightning Protection Device

- It includes the lightning protection device and the surge protection device, which can effectively protect the electric system elements and workers from lightning.

### Hook Latch

- The lifting hook is installed with a baffle plate to prevent wire rope from falling off.

### Swing and Traveling Alarm

- During swing and traveling, the alarm horn will be blown per certain frequency to alert the personnel around the crane. The horn can be shut off through the display.

### Function Lock

- The operation will be locked by pulling up the function locking lever on the right side of the seat inside the driver's cab or when the operator left the seat, after which no operating handles will be working so that improper operation caused by the body collision when getting on and off the crane can be avoided.

### Regulation of Engine Power Ultimate Load and Stalling Protection

- The controller can monitor the engine power so as to prevent stalling.

### Engine Status Monitoring

- It can show the engine coolant temperature, fuel volume, total working hours, engine oil pressure, engine speed, battery and voltage.

### Remote Monitoring System

- It monitors and analyzes the operation data so as to realize remote diagnosis of faults and timely solution.

### Emergent Stop

- In a sudden loss of control, press the emergent stop, and brakes will be applied on all actions such as hoisting, luffing, swing and traveling and engine stop.

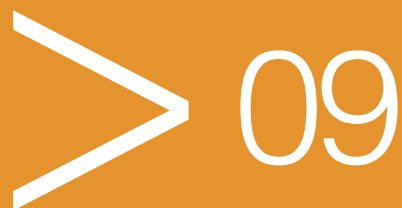


**SCC5500A**  
**SANY CRAWLER CRANE**  
**550 TONS LIFTING CAPACITY**

QUALITY CHANGES THE WORLD

## Technical Parameters

- Page 10 Major Performance & Specifications
- Page 11 Outline Dimension
- Page 13 Transport Dimensions
- Page 21 Transport Plan
- Page 26 Self-Assembly Plan



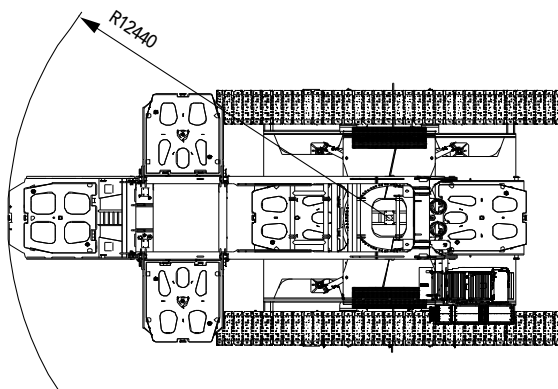
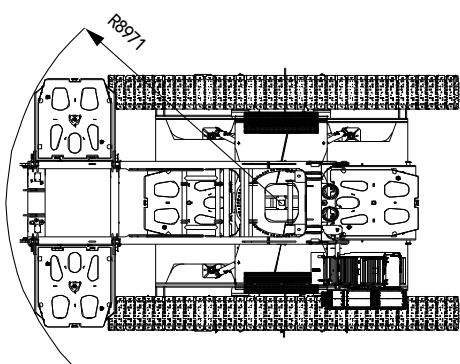
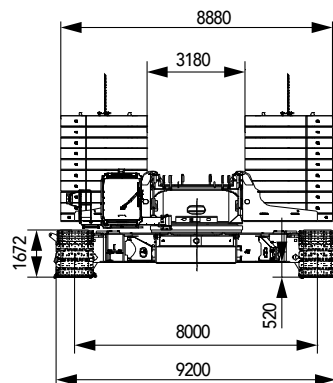
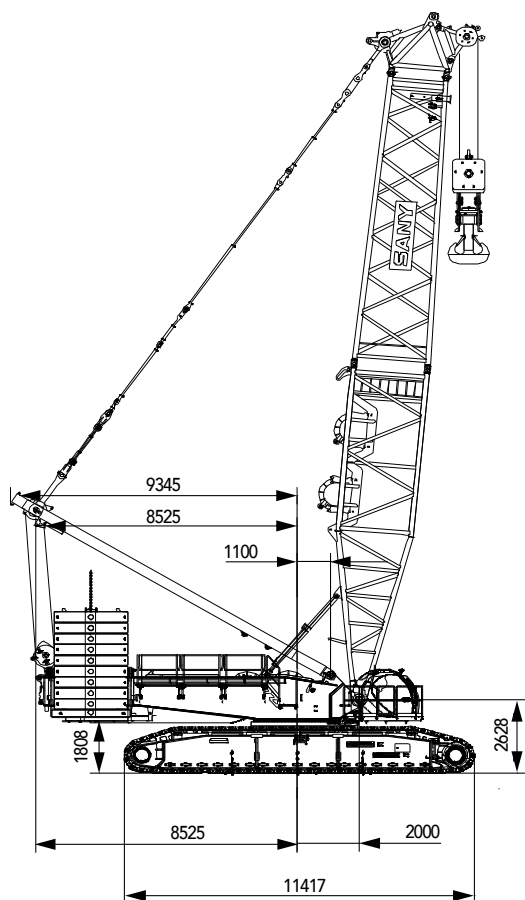


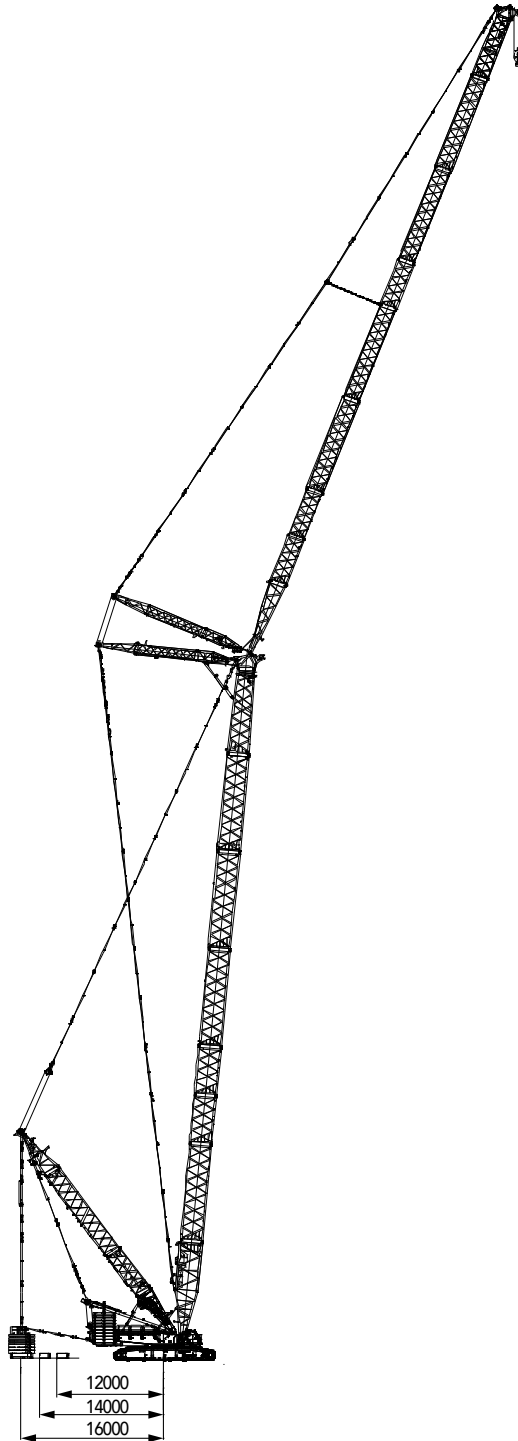
## Major Performance & Specifications

Major Performance & Specifications of SCC5500A		
Performance Indicators	Unit	Parameter
Max. rated lifting capacity	t	550
Max. rated lifting capacity (with superlift)	t	550
Max. rated lifting moment	t·m	3300
Max. rated lifting moment (with superlift)	t·m	6600
Boom length	m	24~84
Boom length (with superlift)	m	36~84
Length of mixed boom	m	48~102
Length of mixed boom (with superlift)	m	78~126
Length of luffing jib	m	24~72
Length of luffing jib (with superlift)	m	24~84
Combination of longest boom+jib (LJDB Configuration)	m	84+84
Mixed power boom +fixed jib	m	102+12
Mixed power boom+ fixed jib( with superlift)	m	132+12
Boom luffing angle	°	30~85
Jib luffing angle	°	25~75
Max. speed of single rope of the main load hoist	m/min	0~140
Max. speed of single rope of the aux.load hoist	m/min	0~140
Max. speed of single rope of the boom hoisting	m/min	(0~70)×2
Max. speed of single rope of the jib luffing	m/min	0~110
Max. speed of single rope of the superlift luffing	m/min	0~110
Slewing speed (no load)	r/min	0~0.99
Travel speed	km/h	0~1(high)/0~0.35(low)
Gradeability (with base boom, driver's cab backwards)	%	15
Rated output power of the engine	kW/r/min	390/2100
Average ground pressure of the track (boom base, 200t machine counterweight, 50t carbody counterweight and 500t hook)	MPa	0.34
Rear counterweight	t	200(without superlift)/160(with superlift)
Superlift counterweight	t	250(including 40t rear counterweight blocks)
Carbody counterweight	t	50
Max. unit transportation dimensions (L × W × H)	mm	12900×3000×3200
Max. unit transportation weight	t	50

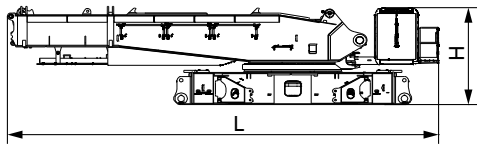
Unit: mm

### Outline Dimension

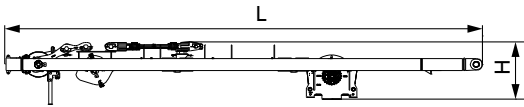


**Outline Dimension**

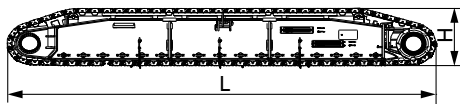
## Transport Dimensions



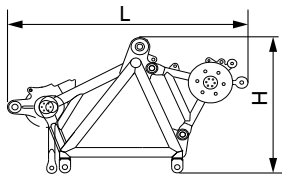
Basic machine	×1
Length (L)	12.90m
Width (W)	3.00m
Height (H)	3.20m
Weight	50.0t



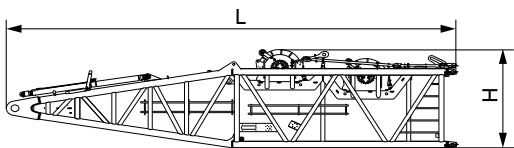
Boom hoisting mast(with winch)	×1
Length (L)	12.30m
Width (W)	2.20m
Height (H)	1.75m
Weight	17.9t



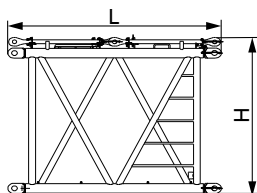
Crawler assembly	×2
Length (L)	11.40m
Width (W)	1.20m
Height (H)	1.67m
Weight	34.8t



Boom tip(with pulley blocks)	×1
Length (L)	3.85m
Width (W)	2.68m
Height (H)	2.38m
Weight	7.88t

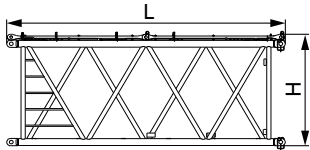


Boom base(with the load hoisting winches)	×1
Length (L)	12.34m
Width (W)	3.00m
Height (H)	3.25m
Weight	26.1t



3m boom insert	×1
Length (L)	3.20m
Width (W)	2.98m
Height (H)	2.77m
Weight	1.78t

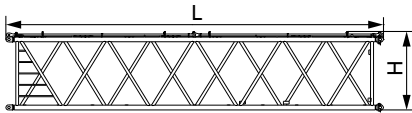
## Transport Dimensions



### 6m boom insert

×2

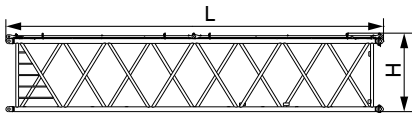
Length(L)	6.20m
Width(W)	3.00m
Height(H)	2.82m
Weight	2.93t



### 12m boom insert A

×1

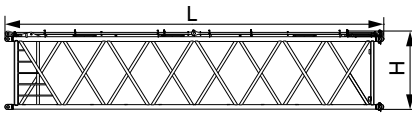
Length(L)	12.24m
Width(W)	3.00m
Height(H)	2.82m
Weight	5.85t



### 12m boom insert B

×2

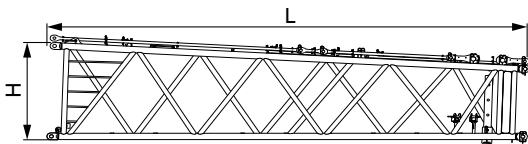
Length(L)	12.24m
Width(W)	3.00m
Height(H)	2.82m
Weight	5.22t



### 12m boom insert C

×1

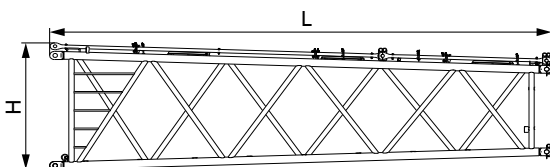
Length(L)	12.24m
Width(W)	3.00m
Height(H)	2.82m
Weight	5.86t



### Tapered boom insert

×1

Length(L)	10.70m
Width(W)	2.98m
Height(H)	2.78m
Weight	6.43t



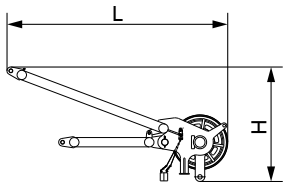
### Tapered insert of mixed boom

×1

Length (L)	9.19m
Width (W)	2.98m
Height (H)	2.78m
Weight	3.55t

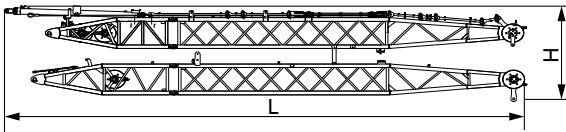


## Transport Dimensions



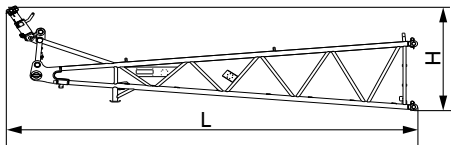
### Extension boom ×1

Length(L)	2.83m
Width(W)	1.70m
Height(H)	1.50m
Weight	0.46t



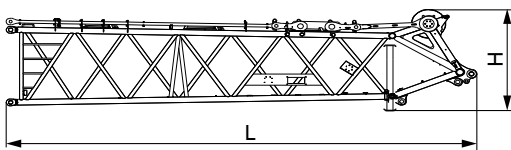
### Front and rear mast of luffing jib ×1

Length(L)	16.80m
Width(W)	3.10m
Height(H)	1.71m
Weight	10.94t



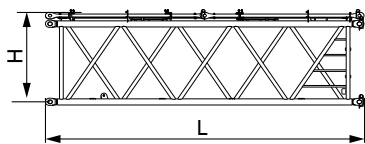
### Luffing jib base ×1

Length(L)	9.71m
Width(W)	2.62m
Height(H)	2.78m
Weight	3.90t



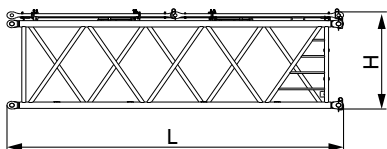
### Luffing jib top ×1

Length(L)	9.75m
Width(W)	2.54m
Height(H)	2.50m
Weight	5.64t



### 6m luffing jib insert A ×2

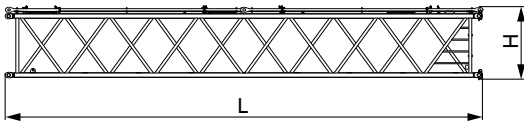
Length(L)	6.19m
Width(W)	2.54m
Height(H)	2.15m
Weight	2.23t



### 6m luffing jib insert B ×1

Length(L)	6.19m
Width(W)	2.54m
Height(H)	2.15m
Weight	2.01t

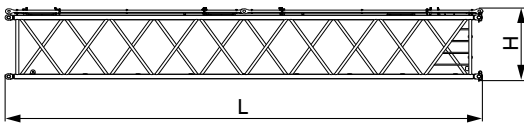
## Transport Dimensions



### 12m luffing jib insert A

×2

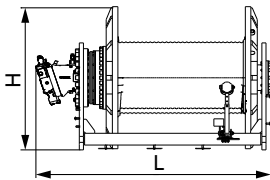
Length(L)	12.2m
Width(W)	2.54m
Height(H)	2.15m
Weight	3.98t



### 12m luffing jib insert B

×2

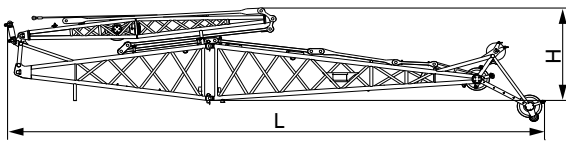
Length (L)	12.2m
Width (W)	2.54m
Height (H)	2.15m
Weight	3.57t



### Jib luffing mechanism

×1

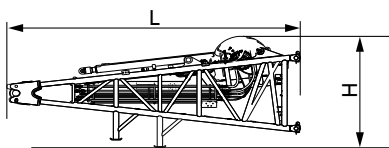
Length(L)	1.72m
Width(W)	1.34m
Height(H)	1.23m
Weight	5.09t



### Fixed jib assembly

×1

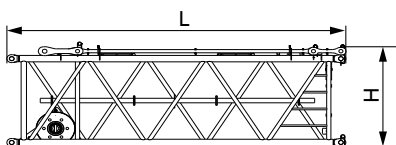
Length(L)	14.00m
Width(W)	2.40m
Height(H)	3.25m
Weight	5.11t



### Superlift mast base ( with superlift luffing winch)

×1

Length(L)	6.30m
Width(W)	2.61m
Height(H)	2.84m
Weight	10.0t

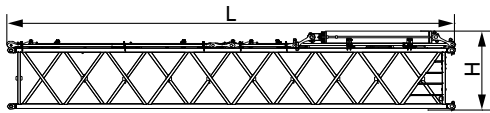


### 6m superlift mast insert

×1

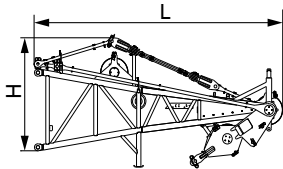
Length (L)	6.21m
Width (W)	2.96m
Height (H)	2.14m
Weight	2.90t

## Transport Dimensions



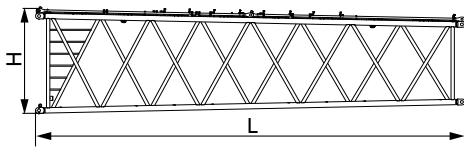
### 12m superlift mast insert ×1

Length(L)	12.21m
Width(W)	3.02m
Height(H)	2.60m
Weight	8.65t



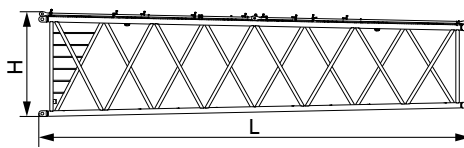
### Superlift mast top ×1

Length(L)	6.45m
Width(W)	2.96m
Height(H)	2.76m
Weight	7.78t



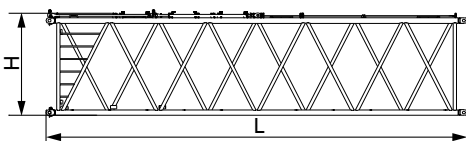
### 12m power boom lower transition insert ×1

Length(L)	12.20m
Width(W)	3.56m
Height(H)	3.25m
Weight	8.09t



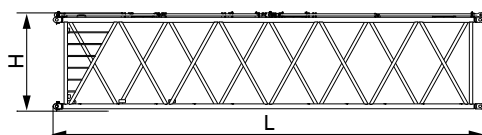
### 12m power boom upper transition insert ×1

Length(L)	12.20m
Width(W)	3.56m
Height(H)	3.25m
Weight	6.53t



### 12m power boom insert A ×1

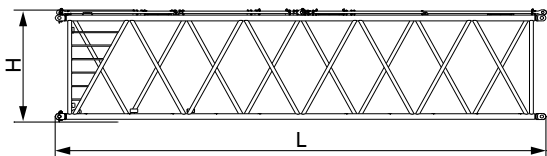
Length(L)	12.20m
Width(W)	3.56m
Height(H)	3.25m
Weight	6.68t



### 12m power boom insert B ×2

Length(L)	12.20m
Width(W)	3.56m
Height(H)	3.25m
Weight	7.09t

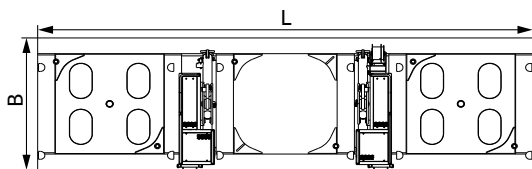
## Transport Dimensions



### 12m power boom insert C

×1

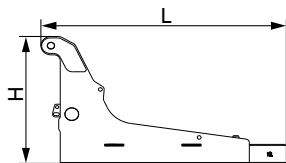
Length(L)	12.20m
Width(W)	3.56m
Height(H)	3.25m
Weight	6.68t



### Superlift counterweight tray

×1

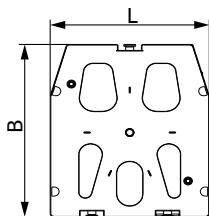
Length(L)	8.60m
Width(W)	2.50m
Height(H)	1.85m
Weight	28.7t



### Rear counterweight tray

×2

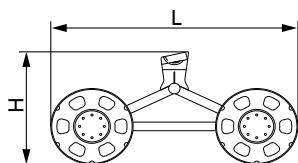
Length(L)	3.18m
Width(W)	2.83m
Height(H)	1.80m
Weight	10.0t



### 10t counterweight block

×38

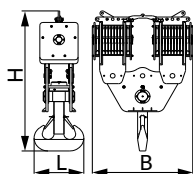
Length(L)	2.40m
Width(W)	2.85m
Height(H)	0.48m
Weight	10.0t



### Trolley

×1

Length(L)	3.00m
Width(W)	2.05m
Height(H)	1.50m
Weight	1.09t

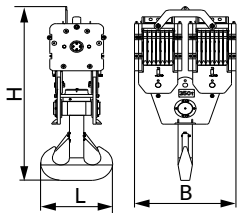


### 500t hook

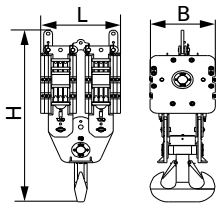
×1

Length(L)	1.33m
Width(W)	2.69m
Height(H)	4.07m
Weight	10.9t

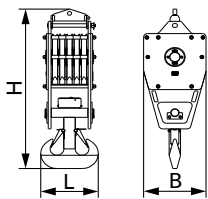
## Transport Dimensions



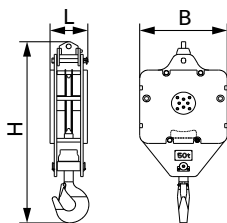
350t hook ×1	
Length(L)	1.00m
Width(W)	1.88m
Height(H)	3.84m
Weight	10.34t



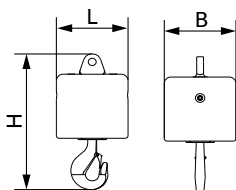
180t hook ×1	
Length(L)	1.31m
Width(W)	1.07m
Height(H)	3.06m
Weight	7.95t



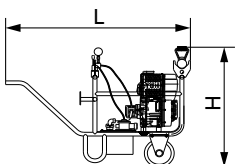
160t hook ×1	
Length(L)	0.60m
Width(W)	1.02m
Height(H)	2.64m
Weight	3.12t



50t hook ×1	
Length(L)	0.45m
Width(W)	1.02m
Height(H)	2.30m
Weight	1.69t



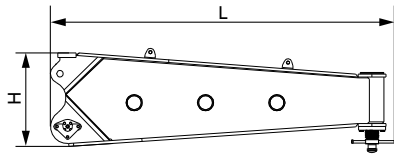
16t hook ×1	
Length(L)	0.53m
Width(W)	0.53m
Height(H)	1.10m
Weight	0.94t



Portable power pack ×1	
Length(L)	1.55m
Width(W)	0.70m
Height(H)	1.09m
Weight	0.20t

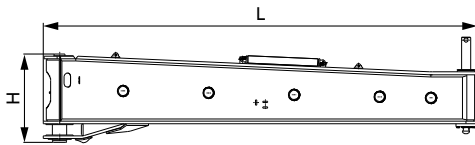


## Transport Dimensions



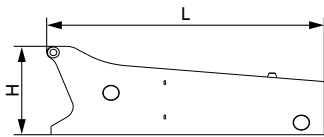
### Side outrigger ×2

Length(L)	3.62m
Width(W)	0.80m
Height(H)	0.98m
Weight	1.58t



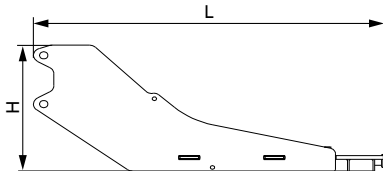
### Front outrigger ×2

Length(L)	6.08m
Width(W)	0.43m
Height(H)	1.18m
Weight	4.70t



### Carbody counterweight tray ×2

Length(L)	3.03m
Width(W)	2.94m
Height(H)	1.05m
Weight	15.0t



### Additional rear counterweight tray ×1

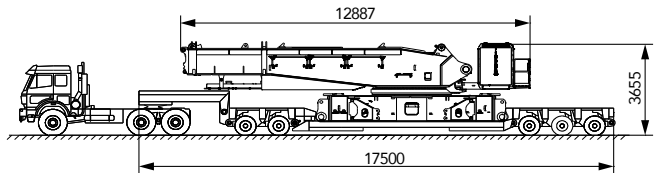
Length(L)	4.12m
Width(W)	2.95m
Height(H)	1.92m
Weight	7.15t

#### Note:

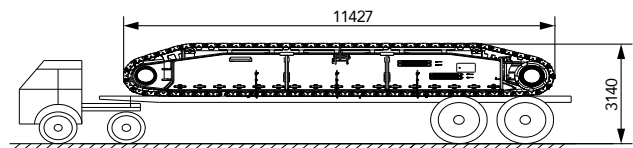
1. The transport dimensions of each part in the table are schematic, not proportional to the real parts. The dimensions are designed value without package considered.
2. Weight is designed value that the actual manufactured part may deviate a little.
3. The dimensions and weight of each part may change due to product upgrading. The final values are subject to the new product.

## Transport Plan

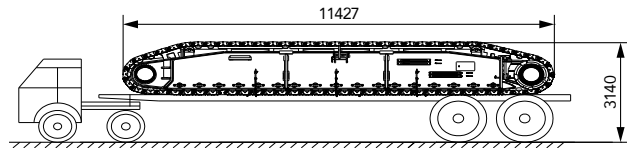
Trailer 1	<ul style="list-style-type: none"> <li>Length 17.5m, Width 2.5m,</li> <li>Height 0.576m, Rated load 60t</li> </ul>
Transport weight	50t
Part	<ul style="list-style-type: none"> <li>Rotating platform,</li> <li>Carbody</li> </ul>
Truckload	1+1



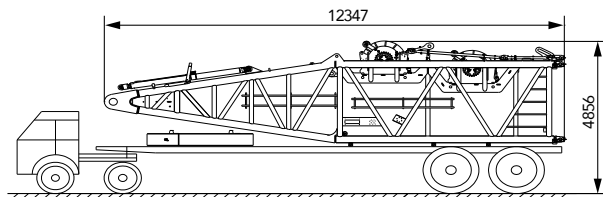
Trailer 2	<ul style="list-style-type: none"> <li>Length 17.5m, Width 2.5m,</li> <li>Height 1.2m, Rated load 35t</li> </ul>
Transport weight	34.8t
Part	Crawler assembly
Truckload	1



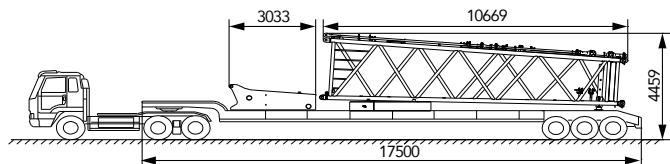
Trailer 3	<ul style="list-style-type: none"> <li>Length 17.5m, Width 2.5m,</li> <li>Height 1.2m, Rated load 35t</li> </ul>
Transport weight	34.8t
Part	Crawler assembly
Truckload	1



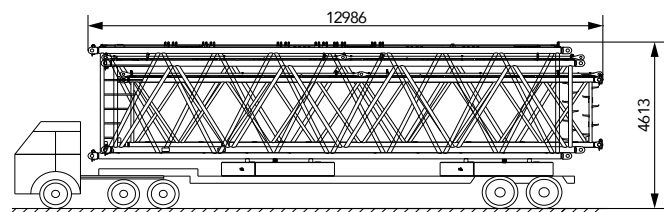
Trailer 4	<ul style="list-style-type: none"> <li>Length 17.5m, Width 2.5m,</li> <li>Height 1.2m, Rated load 35t</li> </ul>
Transport weight	36.1t
Part	<ul style="list-style-type: none"> <li>Boom base</li> <li>10t counterweight block</li> </ul>
Truckload	1+1



Trailer 5	<ul style="list-style-type: none"> <li>Length 17.5m, Width 2.5m,</li> <li>Height 1.2m, Rated load 35t</li> </ul>
Transport weight	31.43t
Part	<ul style="list-style-type: none"> <li>Tapered boom insert</li> <li>Carbody counterweight tray</li> <li>10t counterweight block</li> </ul>
Truckload	1+1+1

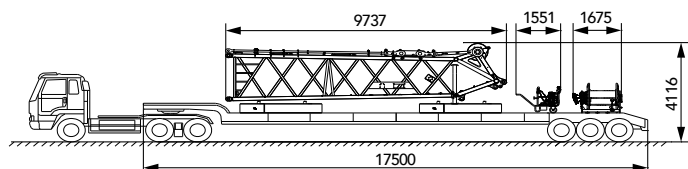
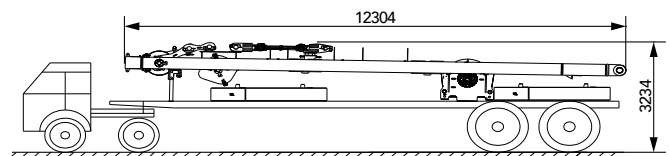
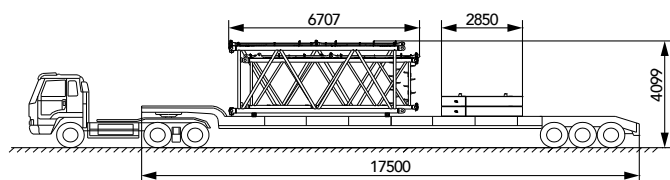
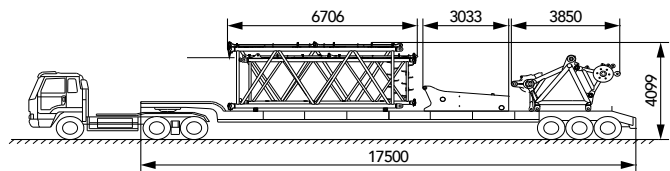
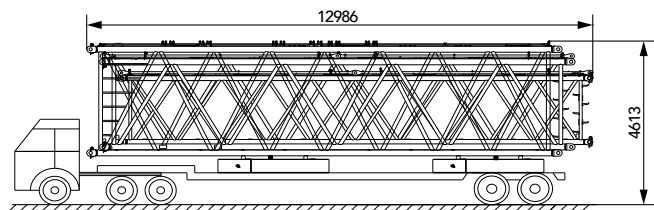
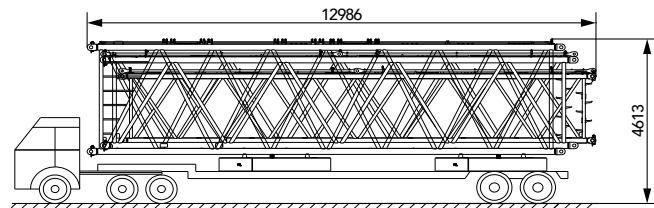


Trailer 6.7	<ul style="list-style-type: none"> <li>Length 17.5m, Width 2.5m,</li> <li>Height 1.2m, Rated load 35t</li> </ul>
Transport weight	35.88t
Part	<ul style="list-style-type: none"> <li>12m boom insert B</li> <li>12m luffing boom insert B</li> <li>12m power boom insert B</li> <li>10t counterweight block</li> </ul>
Truckload	1+1+1+2



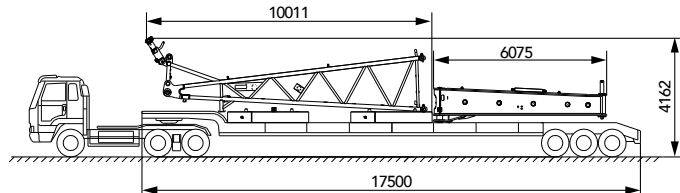
## Transport Plan

Trailer 8	<ul style="list-style-type: none"> <li>Length 17.5m, Width 2.5m,</li> <li>Height 1.2m, Rated load 35t</li> </ul>
Transport weight	<ul style="list-style-type: none"> <li>36.51t</li> </ul>
Part	<ul style="list-style-type: none"> <li>12m boom insert A</li> <li>12m luffing boom insert A</li> <li>12m power boom insert A</li> <li>10t counterweight block</li> </ul>
Truckload	<ul style="list-style-type: none"> <li>1+1+1+2</li> </ul>
Trailer 9	<ul style="list-style-type: none"> <li>Length 17.5m, Width 2.5m,</li> <li>Height 1.2m, Rated load 35t</li> </ul>
Transport weight	<ul style="list-style-type: none"> <li>36.52t</li> </ul>
Part	<ul style="list-style-type: none"> <li>12m boom insert C</li> <li>12m luffing boom insert A</li> <li>12m power boom insert C</li> <li>10t counterweight block</li> </ul>
Truckload	<ul style="list-style-type: none"> <li>1+1+1+2</li> </ul>
Trailer 10	<ul style="list-style-type: none"> <li>Length 17.5m, Width 2.5m,</li> <li>Height 1.2m, Rated load 35t</li> </ul>
Transport weight	<ul style="list-style-type: none"> <li>28.04t</li> </ul>
Part	<ul style="list-style-type: none"> <li>6m boom insert</li> <li>6m luffing boom insert A</li> <li>Boom tip</li> <li>Pulley block</li> <li>Carbody counterweight tray</li> </ul>
Truckload	<ul style="list-style-type: none"> <li>1+1+1+2+1</li> </ul>
Trailer 11	<ul style="list-style-type: none"> <li>Length 17.5m, Width 2.5m,</li> <li>Height 1.2m, Rated load 35t</li> </ul>
Transport weight	<ul style="list-style-type: none"> <li>25.16t</li> </ul>
Part	<ul style="list-style-type: none"> <li>6m boom insert</li> <li>6m luffing boom insert A</li> <li>10t counterweight block</li> </ul>
Truckload	<ul style="list-style-type: none"> <li>1+1+2</li> </ul>
Trailer 12	<ul style="list-style-type: none"> <li>Length 17.5m, Width 2.5m,</li> <li>Height 1.2m, Rated load 35t</li> </ul>
Transport weight	<ul style="list-style-type: none"> <li>37.9t</li> </ul>
Part	<ul style="list-style-type: none"> <li>Boom hoisting mast and winch</li> <li>10t counterweight block</li> </ul>
Truckload	<ul style="list-style-type: none"> <li>1+2</li> </ul>
Trailer 13	<ul style="list-style-type: none"> <li>Length 17.5m, Width 2.5m,</li> <li>Height 1.2m, Rated load 35t</li> </ul>
Transport weight	<ul style="list-style-type: none"> <li>30.93t</li> </ul>
Part	<ul style="list-style-type: none"> <li>Jib top</li> <li>Portable power pack</li> <li>Jib luffing mechanism</li> <li>10t counterweight block</li> </ul>
Truckload	<ul style="list-style-type: none"> <li>1+1+1+2</li> </ul>

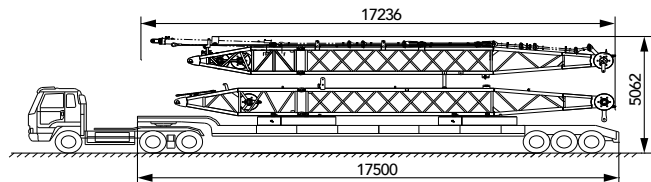


## Transport Plan

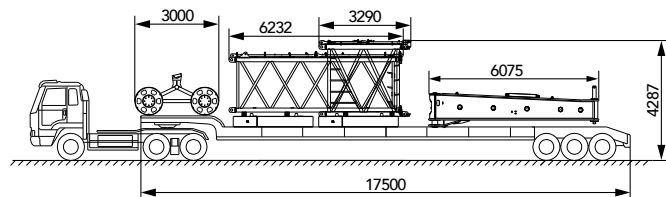
Trailer 14	<ul style="list-style-type: none"> <li>Length 17.5m, Width 2.5m,</li> <li>Height 1.2m, Rated load 35t</li> </ul>
Transport weight	25.35t
Part	<ul style="list-style-type: none"> <li>Luffing jib base,</li> <li>10t counterweight block</li> <li>Front outrigger</li> </ul>
Truckload	1+2+1



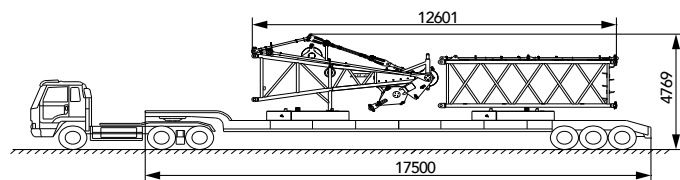
Trailer 15	<ul style="list-style-type: none"> <li>Length 17.5m, Width 2.5m,</li> <li>Height 1.2m, Rated load 35t</li> </ul>
Transport weight	30.94t
Part	<ul style="list-style-type: none"> <li>Front and rear mast of luffing jib,</li> <li>10t counterweight block</li> </ul>
Truckload	1+1+2



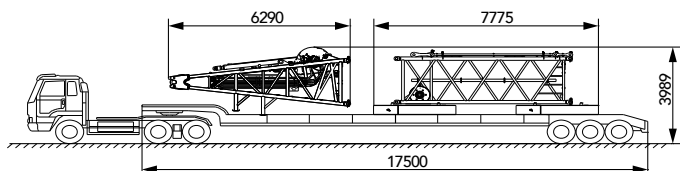
Trailer 16	<ul style="list-style-type: none"> <li>Length 17.5m, Width 2.5m,</li> <li>Height 1.2m, Rated load 35t</li> </ul>
Transport weight	26.33t
Part	<ul style="list-style-type: none"> <li>6m luffing jib insert B,</li> <li>Trolley,</li> <li>3m boom insert,</li> <li>10t counterweight block</li> <li>Front outrigger</li> </ul>
Truckload	1+1+1+2+1



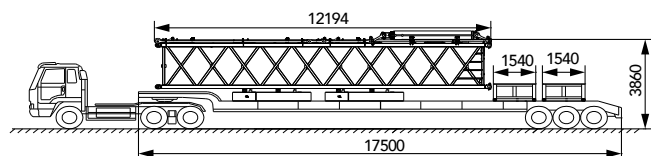
Trailer 17	<ul style="list-style-type: none"> <li>Length 17.5m, Width 2.5m,</li> <li>Height 1.2m, Rated load 35t</li> </ul>
Transport weight	29.79t
Part	<ul style="list-style-type: none"> <li>Superlift mast top,</li> <li>10t counterweight block,</li> <li>6m luffing jib insert B</li> </ul>
Truckload	1+2+1



Trailer 18	<ul style="list-style-type: none"> <li>Length 17.5m, Width 2.5m,</li> <li>Height 1.2m, Rated load 35t</li> </ul>
Transport weight	32.90t
Part	<ul style="list-style-type: none"> <li>Superlift mast base and luffing mechanism,</li> <li>10t counterweight block,</li> <li>6m superlift mast insert</li> </ul>
Truckload	1+2+1

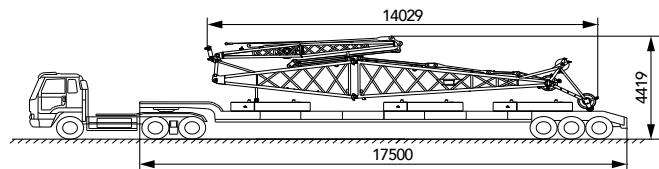


Trailer 19	<ul style="list-style-type: none"> <li>Length 17.5m, Width 2.5m,</li> <li>Height 1.2m, Rated load 35t</li> </ul>
Transport weight	30.01t
Part	<ul style="list-style-type: none"> <li>Superlift mast top,</li> <li>Package case,</li> <li>10t counterweight block</li> </ul>
Truckload	1+2+2

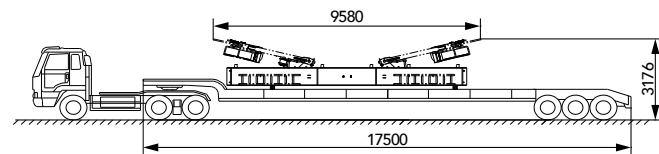


## Transport Plan

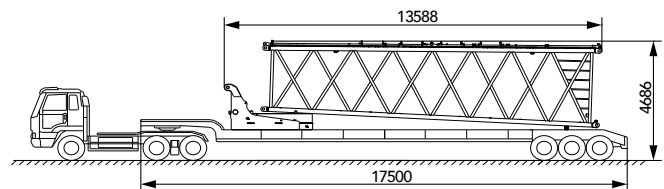
Trailer 20	<ul style="list-style-type: none"> <li>Length 17.5m, Width 2.5m,</li> <li>Height 1.2m, Rated load 35t</li> </ul>
Transport weight	<ul style="list-style-type: none"> <li>35.28t</li> </ul>
Part	<ul style="list-style-type: none"> <li>Fixed jib assembly,</li> <li>10t counterweight block</li> </ul>
Truckload	<ul style="list-style-type: none"> <li>1+3</li> </ul>



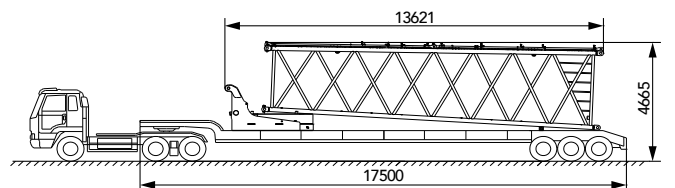
Trailer 21	<ul style="list-style-type: none"> <li>Length 17.5m, Width 2.5m,</li> <li>Height 1.2m, Rated load 35t</li> </ul>
Transport weight	<ul style="list-style-type: none"> <li>28.7t</li> </ul>
Part	<ul style="list-style-type: none"> <li>Superlift counterweight tray</li> </ul>
Truckload	<ul style="list-style-type: none"> <li>1</li> </ul>



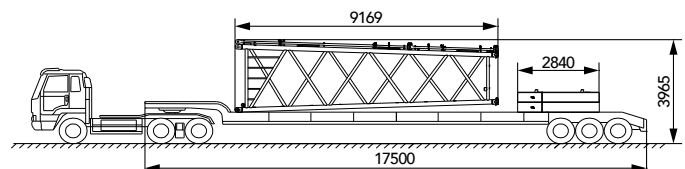
Trailer 22	<ul style="list-style-type: none"> <li>Length 17.5m, Width 2.5m,</li> <li>Height 1.2m, Rated load 35t</li> </ul>
Transport weight	<ul style="list-style-type: none"> <li>28.09t</li> </ul>
Part	<ul style="list-style-type: none"> <li>12m lower transition insert,</li> <li>Rear counterweight tray,</li> <li>10t counterweight block</li> </ul>
Truckload	<ul style="list-style-type: none"> <li>1+1+1</li> </ul>



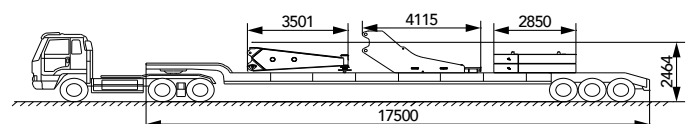
Trailer 23	<ul style="list-style-type: none"> <li>Length 17.5m, Width 2.5m,</li> <li>Height 1.2m, Rated load 35t</li> </ul>
Transport weight	<ul style="list-style-type: none"> <li>26.59t</li> </ul>
Part	<ul style="list-style-type: none"> <li>12m upper transition insert,</li> <li>Rear counterweight tray,</li> <li>10t counterweight block</li> </ul>
Truckload	<ul style="list-style-type: none"> <li>1+1+1</li> </ul>



Trailer 24	<ul style="list-style-type: none"> <li>Length 17.5m, Width 2.5m,</li> <li>Height 1.2m, Rated load 35t</li> </ul>
Transport weight	<ul style="list-style-type: none"> <li>23.55t</li> </ul>
Part	<ul style="list-style-type: none"> <li>Tapered insert of mixed boom,</li> <li>10t counterweight block</li> </ul>
Truckload	<ul style="list-style-type: none"> <li>1+2</li> </ul>

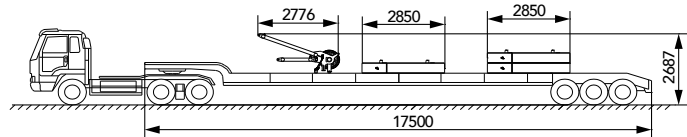


Trailer 25	<ul style="list-style-type: none"> <li>Length 17.5m, Width 2.5m,</li> <li>Height 1.2m, Rated load 35t</li> </ul>
Transport weight	<ul style="list-style-type: none"> <li>30.31t</li> </ul>
Part	<ul style="list-style-type: none"> <li>Side outrigger,</li> <li>Additional rear counterweight tray</li> <li>10t counterweight block</li> </ul>
Truckload	<ul style="list-style-type: none"> <li>2+1+2</li> </ul>

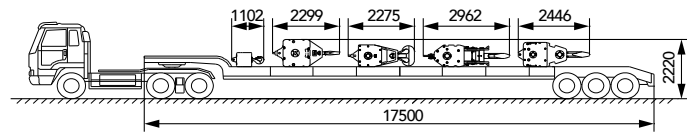


## Transport Plan

Trailer 26	<ul style="list-style-type: none"> <li>Length 17.5m, Width 2.5m,</li> <li>Height 1.2m, Rated load 35t</li> </ul>
Transport weight	30.46t
Part	<ul style="list-style-type: none"> <li>Extension boom,</li> <li>10t counterweight block</li> </ul>
Truckload	1+3

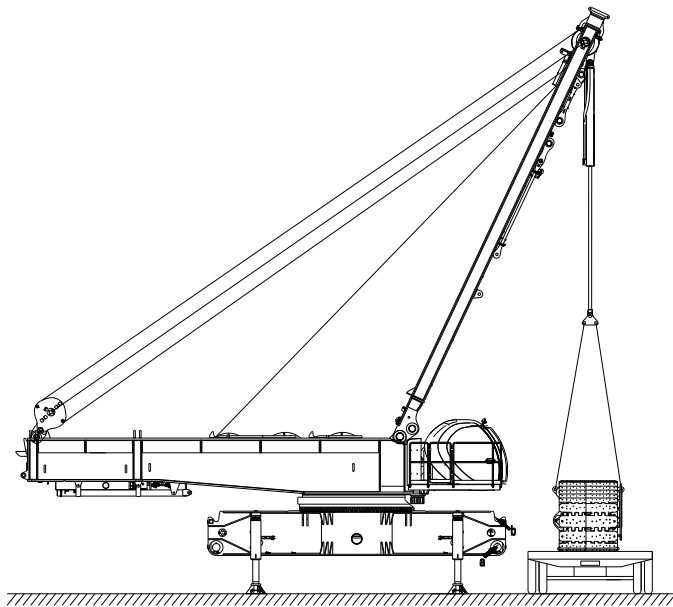
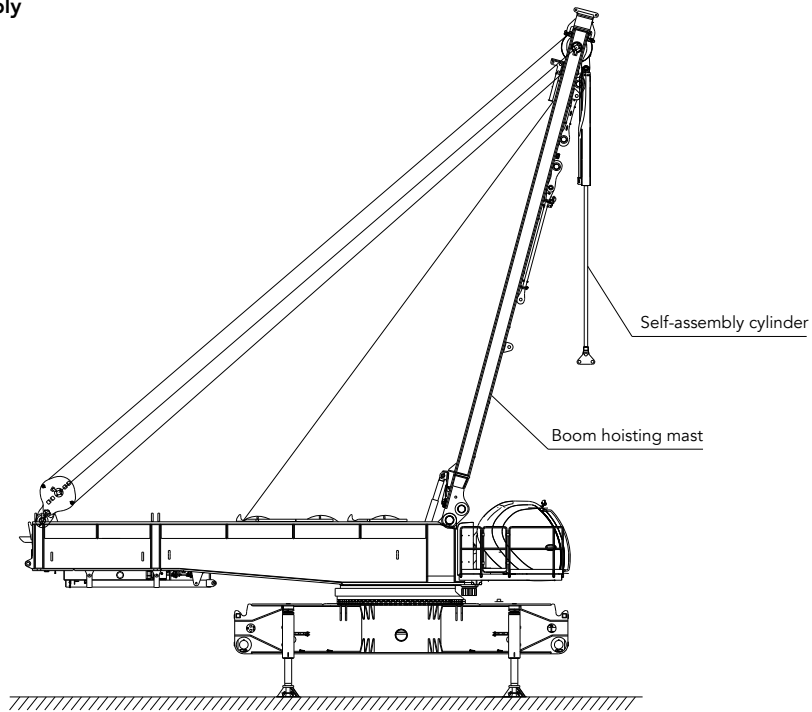


Trailer 27	<ul style="list-style-type: none"> <li>Length 17.5m, Width 2.5m,</li> <li>Height 1.2m, Rated load 35t</li> </ul>
Transport weight	35.07t
Part	<ul style="list-style-type: none"> <li>16t ball hook,</li> <li>50t hook</li> <li>160t hook</li> <li>180t hook</li> <li>350t hook</li> <li>500t hook</li> </ul>
Truckload	1+1+1+1+1



## Self-Assembly Plan

### Crawler frame self-assembly





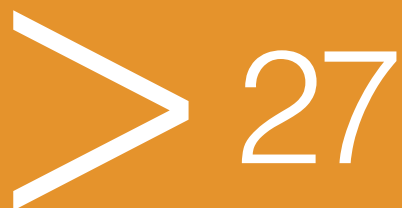


# **SCC5500A SANY CRAWLER CRANE 550 TONS LIFTING CAPACITY**

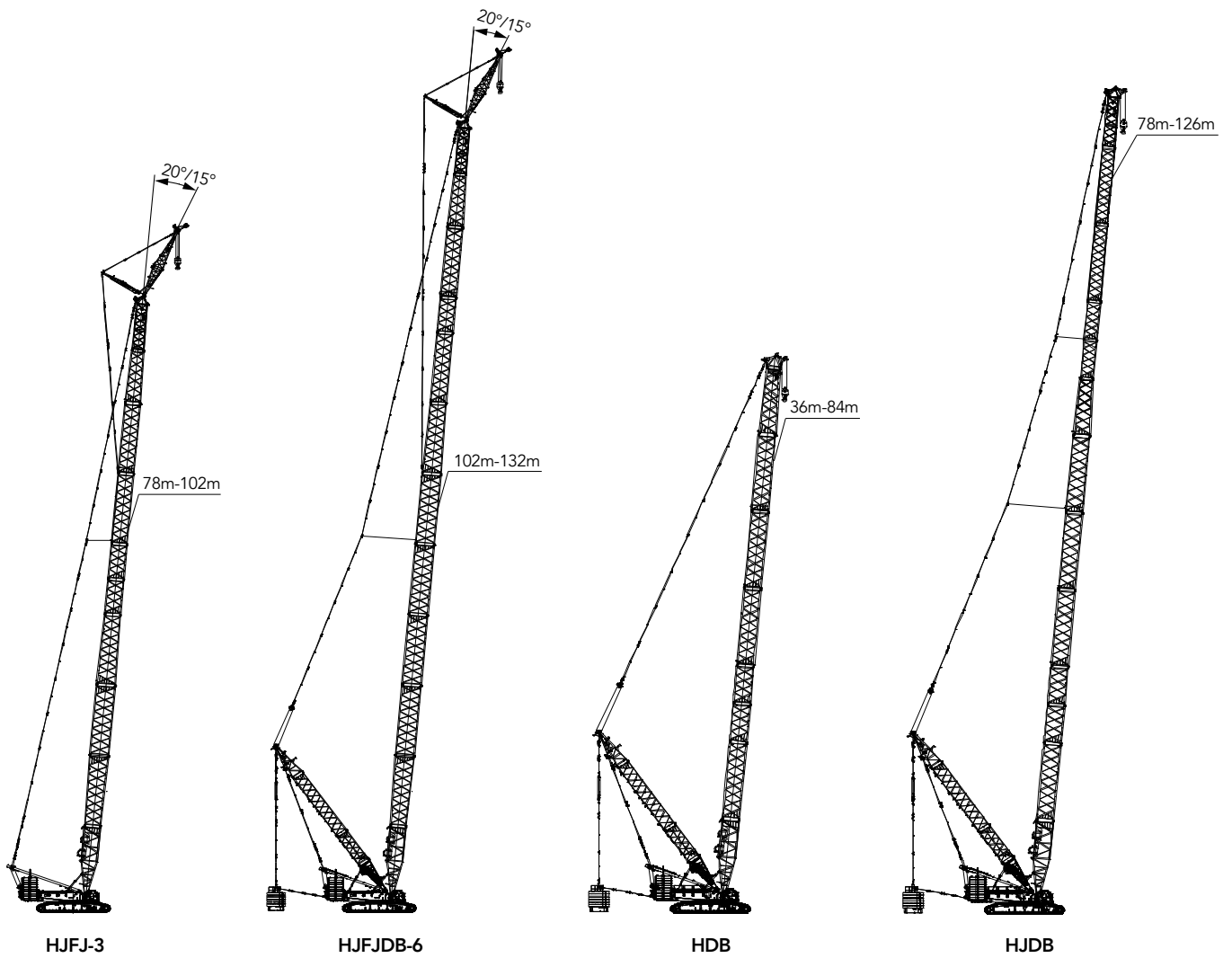
QUALITY CHANGES THE WORLD

## Cofigurations

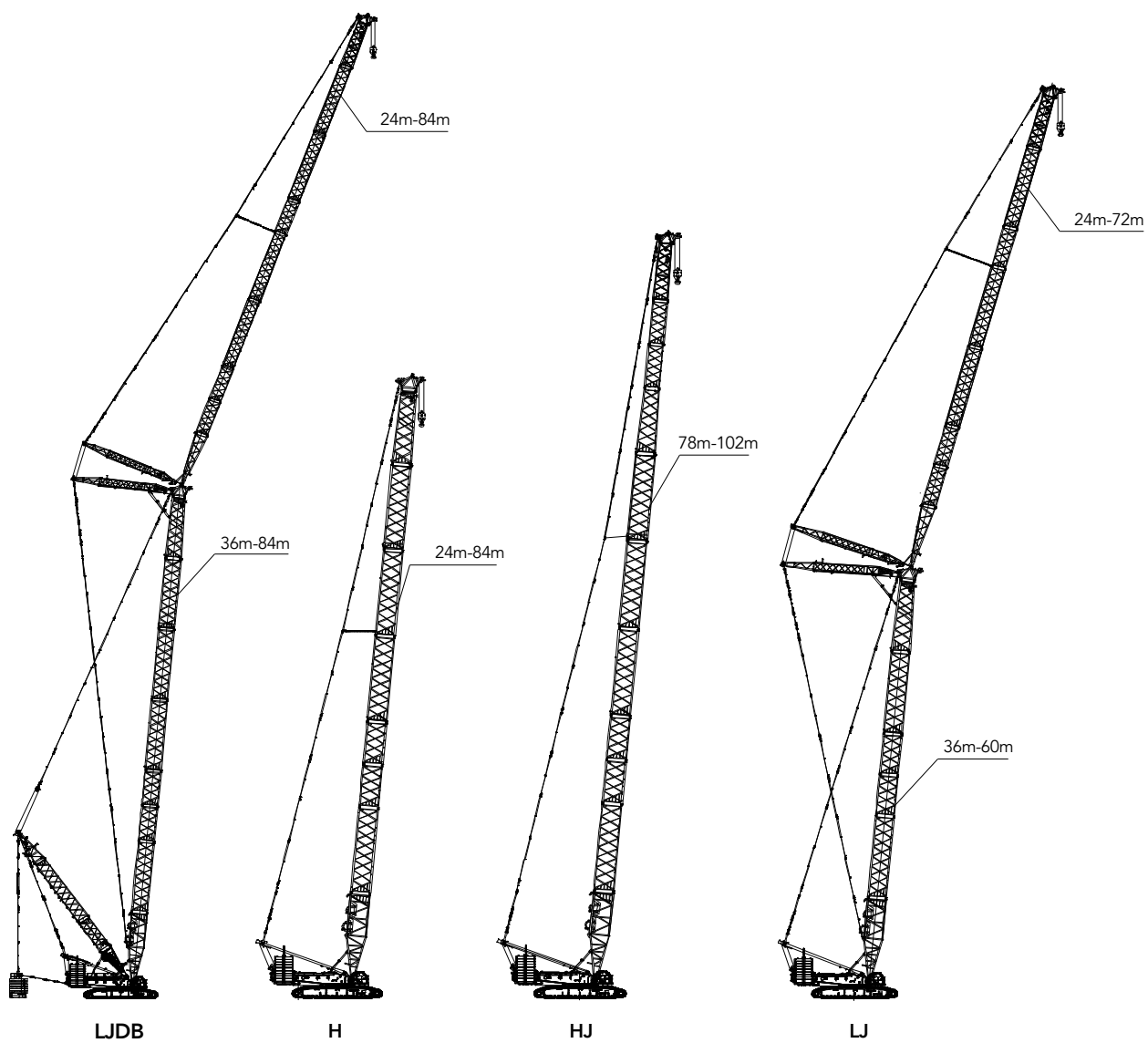
- Page 28 Configuration
- Page 30 HJFJ-3 Configuration
- Page 34 HJFJDB-6 Configuration
- Page 38 H Configuration
- Page 41 HDB Configuration
- Page 44 HJ Configuration
- Page 47 HJDB Configuration
- Page 50 LJ Configuration
- Page 57 Working Radius in LJDB



## Configurations



## Configurations



## Boom Combination in HJFJ-3

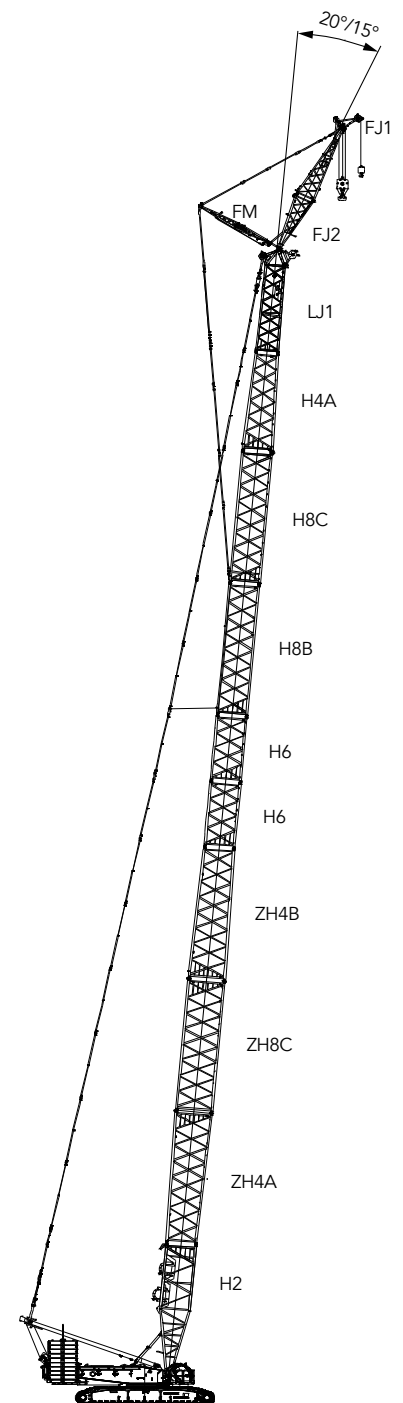
### Boom Combination in HJFJ-3

Boom length(m)	Standard boom insert				Power boom		
	3m/ (H5)	6m/ (H6)	12mB/ (H8B)	12mC/ (H8C)	12m lower transition insert/ (ZH4A)	12m insert C/ (ZH8C)	12m upper transition insert/ (ZH4B)
78*	-	-	-	1	1	1	1
84*	-	1	-	1	1	1	1
90*	-	-	1	1	1	1	1
93*	1	-	1	1	1	1	1
96*	-	1	1	1	1	1	1
99*	1	1	1	1	1	1	1
102*	-	2	1	1	1	1	1

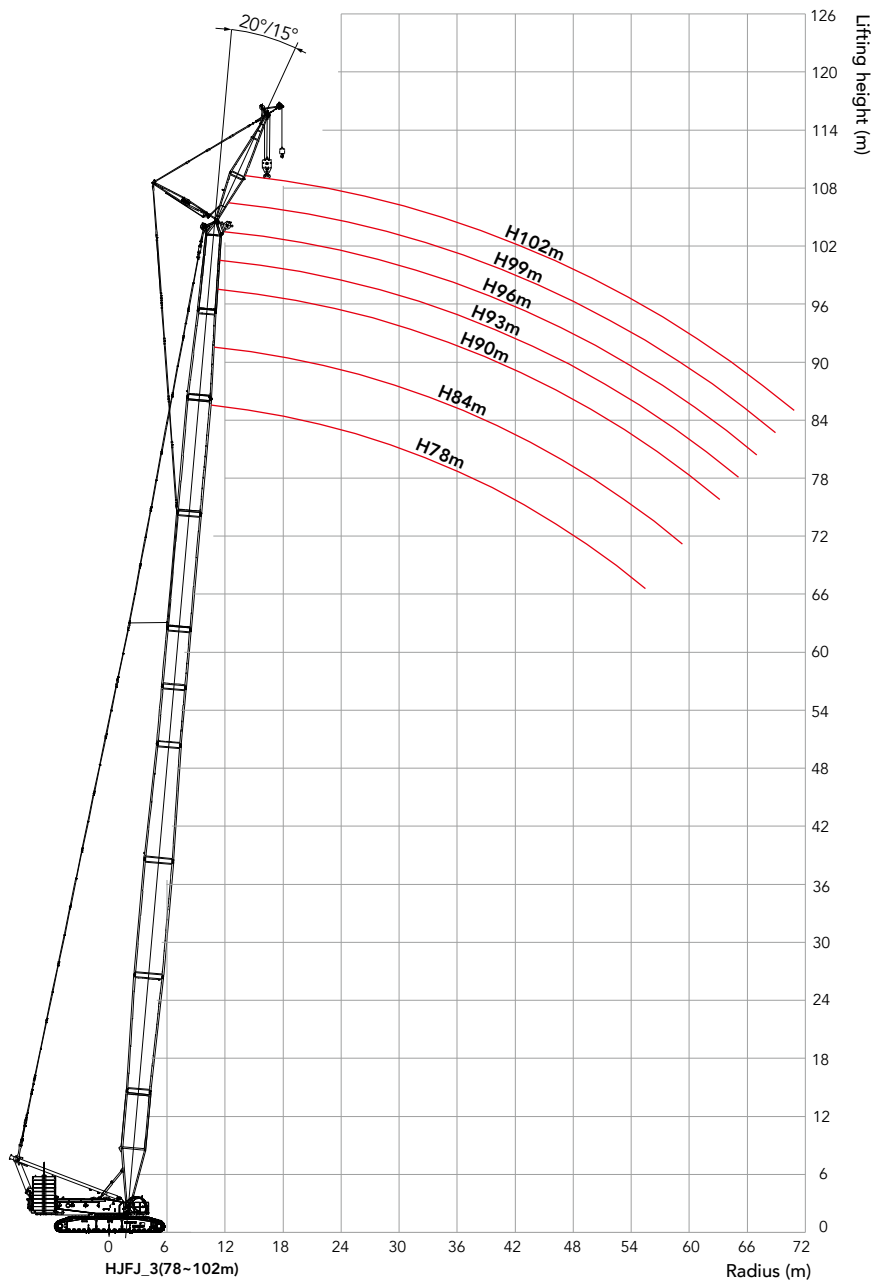
Note: For combinations with "\*", the mid-point suspension cable must be used, otherwise, the boom system may break.

The use of mid-point suspension cable must be strictly in accordance with the Operation Manual.

Attention: If the boom length is 78m and more, the crane must boom up from side by side erection outrigger or from the front by the special front erection outrigger, otherwise, the crane may tip over!



## Working Radius in HJFJ-3



**Load Chart of HJFJ-3**

SCC5500A Crawler Crane- HJFJ-3 Configuration 1/2								
Boom length 78m~102m, Jib length 12m, Boom to jib angle 15°, Rear counterweight 207t, Carbody counterweight 50t								
Radius (m)	Boom length(m)							Radius (m)
	78	84	90	93	96	99	102	
14	175	170	152					14
16	154	150	145	143	141	139	134	16
18	137	133	129	127	125	123	121	18
20	122	119	116	114	112	110	109	20
22	110	107	104	103	101	99.7	98.3	22
24	100	97.2	94.6	93.1	91.7	90.4	89.1	24
26	91.2	88.6	86.3	84.9	83.6	82.4	81.2	26
28	83.5	81.1	79	77.7	76.5	75.3	74.3	28
30	76.8	74.6	72.6	71.3	70.2	69.1	68.1	30
32	70.9	68.7	66.9	65.7	64.6	63.6	62.7	32
34	65.6	63.6	61.8	60.7	59.7	58.7	57.8	34
36	60.8	58.9	57.2	56.2	55.2	54.2	53.4	36
38	56.6	54.7	53.1	52.1	51.1	50.2	49.4	38
40	52.7	50.9	49.4	48.3	47.4	46.6	45.8	40
44	45.9	44.2	42.8	41.8	41	40.2	39.4	44
48	40.2	38.6	37.3	36.3	35.5	34.7	34	48
52	35.1	33.8	32.5	31.6	30.8	30.1	29.4	52
56	30.6	29.6	28.4	27.5	26.8	26	25.4	56
60	26.8	25.9	24.8	24	23.2	22.5	21.9	60
64	23.4	22.6	21.6	20.8	20	19.3	18.7	64
68	20.4	19.6	18.8	18	17.2	16.6	16	68
72	17.8	17	16.3	15.4	14.7	14.1	13.5	72
76	15.4	14.6	14	13.2	12.5	11.8	11.2	76
80	13.3	12.5	11.9	11.1	10.4	9.7	9.2	80
84		10.5	10	9.2	8.5	7.9	7.3	84
88			8.2	7.5	6.8	6.2	5.6	88
92			6.6	5.9	5.2	4.6	4	92
96					3.7	3.1		96

Unit: t

### Load Chart of HJFJ-3

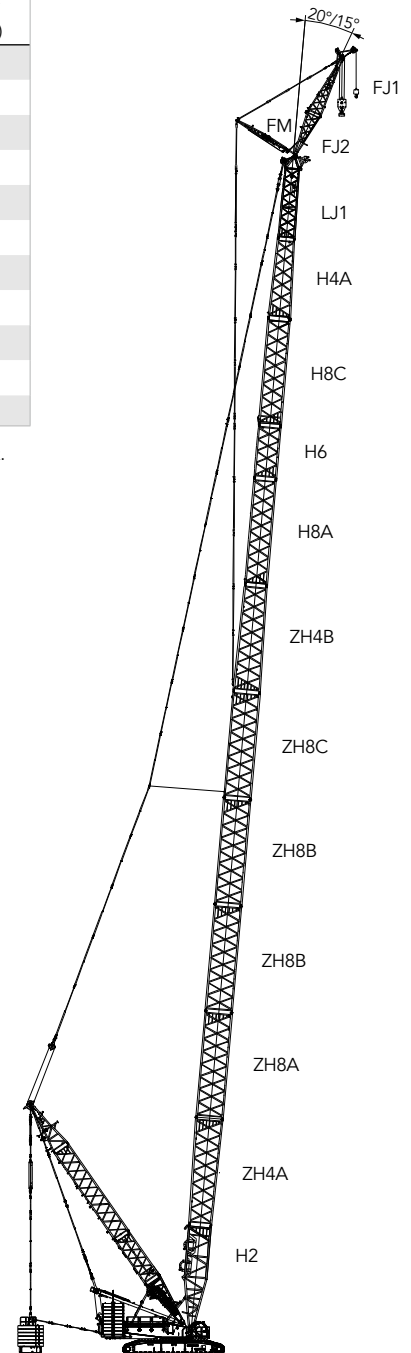
SCC5500A Crawler Crane- HJFJ-3 Configuration 2/2								
Boom length 78m~102m, Jib length 12m, Boom to jib angle 20°, Rear counterweight 207t, Carbody counterweight 50t								
Radius (m)	Boom length(m)							Radius (m)
	78	84	90	93	96	99	102	
14	161							14
16	156	151	138	139	136	134	132	16
18	138	134	130	128	126	125	123	18
20	123	120	117	115	113	112	110	20
22	111	108	105	104	102	101	99.4	22
24	101	98.1	95.5	94.1	92.7	91.4	90.1	24
26	92	89.4	87.1	85.7	84.5	83.3	82.1	26
28	84.2	81.9	79.7	78.5	77.3	76.2	75.1	28
30	77.5	75.2	73.3	72.1	71	69.9	68.9	30
32	71.5	69.4	67.5	66.4	65.3	64.3	63.4	32
34	66.1	64.1	62.4	61.3	60.3	59.3	58.5	34
36	61.3	59.4	57.8	56.7	55.8	54.9	54	36
38	57	55.2	53.6	52.6	51.7	50.8	50	38
40	53.1	51.4	49.9	48.9	48	47.1	46.3	40
44	46.3	44.6	43.2	42.3	41.4	40.6	39.9	44
48	40.5	39	37.6	36.7	35.9	35.1	34.5	48
52	35.4	34.1	32.9	32	31.2	30.4	29.8	52
56	30.9	29.9	28.7	27.8	27.1	26.4	25.7	56
60	27	26.1	25.1	24.2	23.5	22.8	22.2	60
64	23.5	22.7	21.9	21	20.3	19.6	19	64
68	20.6	19.7	19	18.2	17.5	16.8	16.2	68
72	17.9	17.1	16.4	15.6	14.9	14.3	13.7	72
76	15.5	14.7	14.1	13.3	12.6	12	11.4	76
80	13.3	12.6	12	11.2	10.5	9.9	9.3	80
84		10.6	10.1	9.3	8.6	8	7.5	84
88			8.3	7.5	6.9	6.3	5.7	88
92			6.6	5.9	5.3	4.6	4.1	92
96					3.8	3.2		96

Note: The additional rear counterweight is available for this HJFJ-3 Configuration.

## Boom Combination in HJFJDB-6

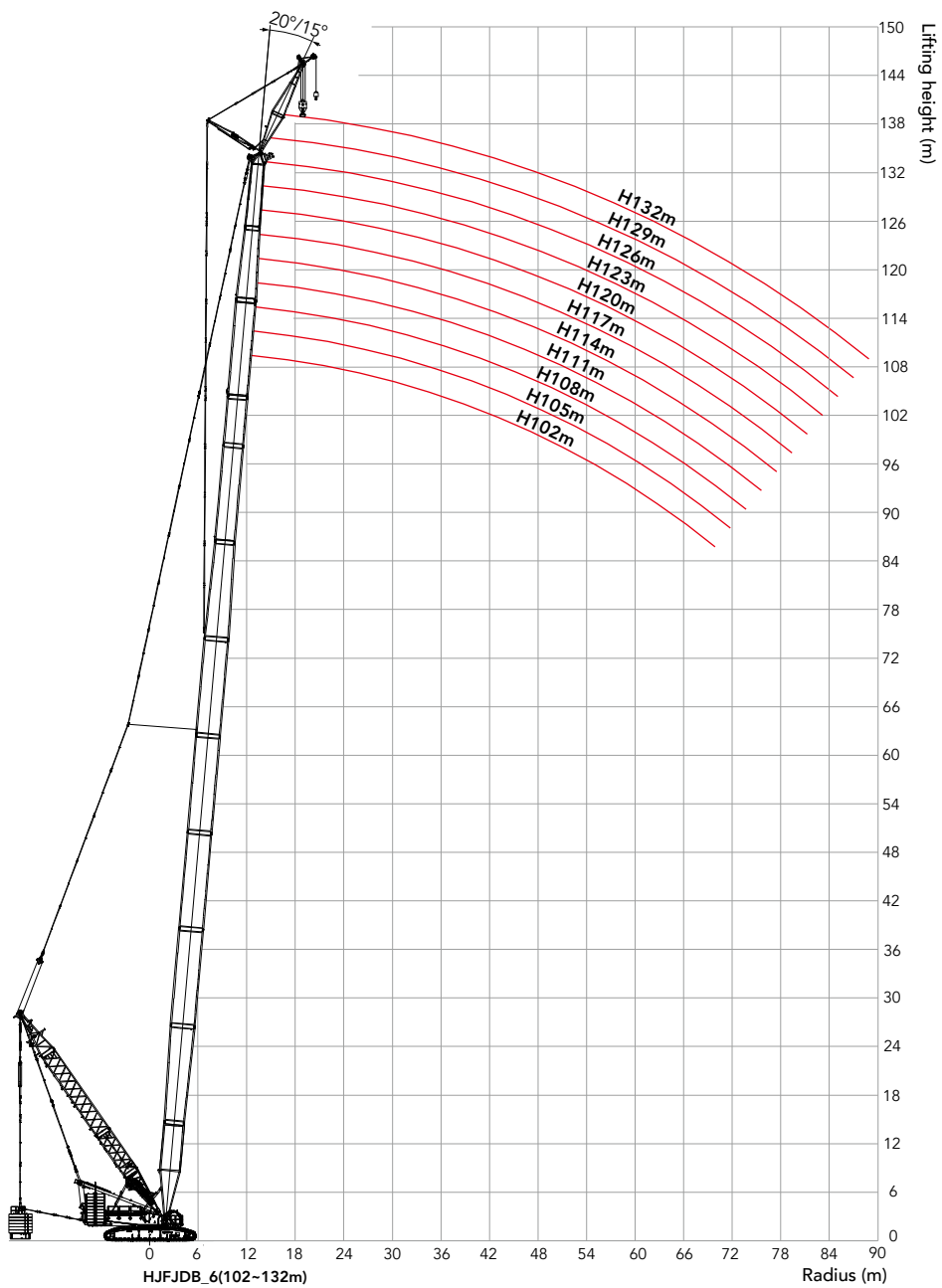
Boom Combination in HJFJDB-6									
Boom length(m)	Standard boom insert				Power boom				
	3m/ (H5)	6m/ (H6)	12mA/ (H8A)	12mC/ (H8C)	12m lower transition insert/ (ZH4A)	12m insertA/ (ZH8A)	12m insert B/ (ZH8B)	12m insertC/ (ZH8C)	12m upper transition insert/ (ZH4B)
102*	-	-	-	-	1	1	2	1	1
105*	1	-	-	-	1	1	2	1	1
108*	-	1	-	-	1	1	2	1	1
111*	1	1	-	-	1	1	2	1	1
114*	-	-	-	1	1	1	2	1	1
117*	1	-	-	1	1	1	2	1	1
120*	-	1	-	1	1	1	2	1	1
123*	1	1	-	1	1	1	2	1	1
126*	-	-	1	1	1	1	2	1	1
129*	1	-	1	1	1	1	2	1	1
132*	-	1	1	1	1	1	2	1	1

Note: For combinations with "\*\*", the mid-point suspension cable must be used otherwise, the boom system may break. The use of mid-point suspension cable must be strictly in accordance with the Operation Manual.





## Working Radius in HJFJDB-6



**Load Chart of HJFJDB-6****SCC5500A Crawler Crane-HJFJDB-6 Configuration 1/2**

Boom length 102m~132m, Jib length 12m, Boom to jib angle 15°, Superlift radius 16m, Superlift counterweight 250t,  
Rear counterweight 160t, Carbody counterweight 50t

Boom length(m)

Radius(m)	102	105	108	111	114	117	120	123	126	129	132	Radius(m)
18	169*	167*	165*	156*	148*	140*						18
20	164*	165*	163*	157*	148*	141*	133*	125*	120*	113*	106*	20
22	160*	160*	160*	157*	149*	141*	133*	125*	119*	112*	105*	22
24	156*	156*	155*	152*	149*	140*	132*	124*	118*	111*	104*	24
26	152*	152*	151*	147*	149*	140*	131*	123*	117*	110*	103*	26
28	148	148	147	141	148	139*	130*	122*	116*	109*	102*	28
30	143	144	143	136	147	138	129	121*	115*	108*	101*	30
32	139	140	137	130	144	136	128	120	114*	107*	99.7*	32
34	135	136	132	126	140	134	127	118	112	105*	98.5*	34
36	132	132	127	122	136	129	123	116	111	104	97.4	36
38	128	128	123	118	132	126	120	112	110	103	96.2	38
40	125	125	119	113	129	122	117	109	109	102	95	40
44	118	117	111	106	120	115	110	103	103	98.1	92.5	44
48	110	109	104	99.8	108	107	104	97.1	97.2	92.9	87.7	48
52	99.3	98.7	98.4	93.5	97	96.5	96.1	91.8	91.4	87.4	83.4	52
56	90.2	89.6	89.3	87.9	87.9	87.4	87	86.4	85.9	82.1	78.8	56
60	82.3	81.7	81.4	80.9	80	79.5	79.1	78.5	78.1	77.9	74.4	60
64	75.4	74.8	74.5	74	73.1	72.6	72.2	71.6	71.2	71.4	70.3	64
68	69.4	68.8	68.4	67.9	67.1	66.5	66.1	65.6	65.1	65.3	64.2	68
72	64	63.4	63	62.5	61.7	61.1	60.7	60.1	59.7	59.9	58.8	72
76	59.1	58.5	58.2	57.7	56.8	56.3	55.9	55.3	54.9	55.1	53.9	76
80	54.8	54.2	53.9	53.3	52.5	51.9	51.5	50.9	50.5	50.7	49.6	80
84	50.8	50.2	49.9	49.4	48.5	48	47.6	47	46.6	46.8	45.6	84
88	47.2	46.6	46.3	45.8	44.9	44.4	44	43.4	43	43.2	42	88
92	43.9	43.3	43	42.5	41.7	41.1	40.7	40.1	39.7	39.9	38.8	92
96	40.9	40.3	40	39.5	38.6	38.1	37.7	37.1	36.7	36.9	35.7	96
100	38.1	37.5	37.2	36.7	35.9	35.3	34.9	34.4	34	34.2	33	100
104		34.9	34.6	34.1	33.3	32.7	32.4	31.8	31.4	31.6	30.4	104
108			32.2	31.7	30.9	30.3	30	29.4	29	29.2	28	108
112					28.7	28.1	27.7	27.2	26.8	27	25.8	112
116							25.7	25.1	24.7	24.9	23.8	116
120								23.2	22.8	23	21.8	120
124										21.2	20	124
128											18.3	128

Unit: t

## Load Chart of HJFJDB-6

SCC5500A Crawler Crane-HJFJDB-6 Configuration 2/2												
Boom length 102m~132m, Jib length 12m, Boom to jib angle 20°, Superlift radius 16m, Superlift counterweight 250t, Rear counterweight 160t, Carbody counterweight 50t												
Boom length(m)												
Radius(m)	102	105	108	111	114	117	120	123	126	129	132	Radius(m)
18	156*	157*										18
20	152*	153*	153*	153*	146*	137*	130*	123*	118*	112*		20
22	147*	149*	150*	150*	146*	138*	131*	123*	118*	111*	105*	22
24	144*	145*	146*	146*	146*	138*	131*	124*	118*	111*	104*	24
26	139*	141*	142*	143*	145*	138*	131*	123*	117*	110*	103*	26
28	136*	138*	138*	137*	143	139*	130*	122*	116*	109*	102*	28
30	132	134	136	132	139	138	129	121*	115*	108*	101*	30
32	129	131	133	128	136	135	128	120	114*	107*	99.9*	32
34	126	128	128	123	133	131	124	116	113	106*	98.9*	34
36	123	125	124	119	131	127	120	113	112	105	97.8	36
38	120	122	120	114	128	122	117	109	110	103	96.7	38
40	118	120	116	111	124	119	113	106	107	102	95.5	40
44	113	113	109	104	118	113	108	100	101	96.1	91.3	44
48	108	107	102	97.8	108	107	102	95.1	94.8	91.1	86.5	48
52	99.6	99	96.3	91.6	97.4	96.9	96.5	90.5	89.7	86.3	81.9	52
56	90.5	89.9	89.6	86.2	88.3	87.7	87.4	86	84.8	81.1	77.4	56
60	82.6	82	81.7	81.2	80.4	79.8	79.4	78.9	78.5	77	73.5	60
64	75.7	75.1	74.8	74.2	73.4	72.9	72.5	72	71.6	71.7	69.7	64
68	69.6	69	68.7	68.1	67.3	66.8	66.4	65.8	65.4	65.6	64.5	68
72	64.2	63.6	63.3	62.7	61.9	61.3	61	60.4	60	60.2	59	72
76	59.3	58.7	58.4	57.9	57	56.5	56.1	55.5	55.1	55.3	54.2	76
80	54.9	54.3	54	53.5	52.7	52.1	51.7	51.2	50.8	51	49.8	80
84	50.9	50.3	50.1	49.5	48.7	48.1	47.8	47.2	46.8	47	45.8	84
88	47.3	46.7	46.4	45.9	45.1	44.5	44.2	43.6	43.2	43.4	42.2	88
92	44	43.4	43.1	42.6	41.8	41.2	40.9	40.3	39.9	40.1	38.9	92
96	41	40.4	40.1	39.6	38.7	38.2	37.8	37.3	36.9	37.1	35.9	96
100	38.1	37.6	37.3	36.8	36	35.4	35	34.5	34.1	34.3	33.1	100
104		35	34.7	34.2	33.4	32.8	32.5	31.9	31.5	31.7	30.5	104
108			32.3	31.7	30.9	30.4	30	29.5	29.1	29.3	28.1	108
112					28.7	28.1	27.8	27.2	26.9	27.1	25.9	112
116						26	25.7	25.2	24.8	25	23.8	116
120								23.2	22.8	23.1	21.9	120
124										21.2	20.1	124
128											18.3	128

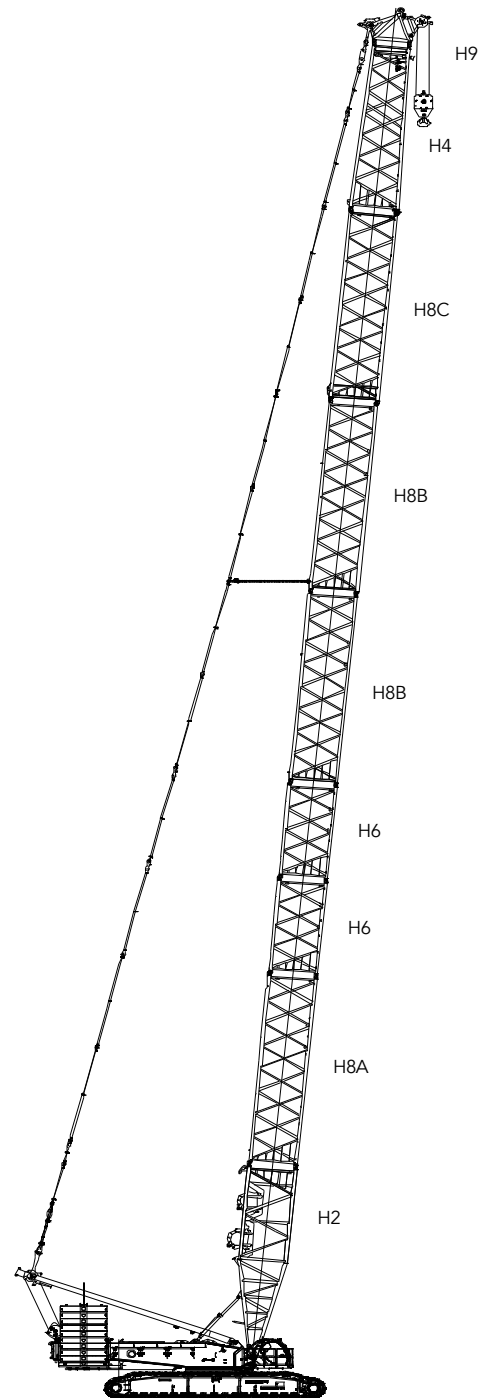
Note: Values with "\*" means the superlift counterweight block shall not leave the ground.

## Boom Combination in H

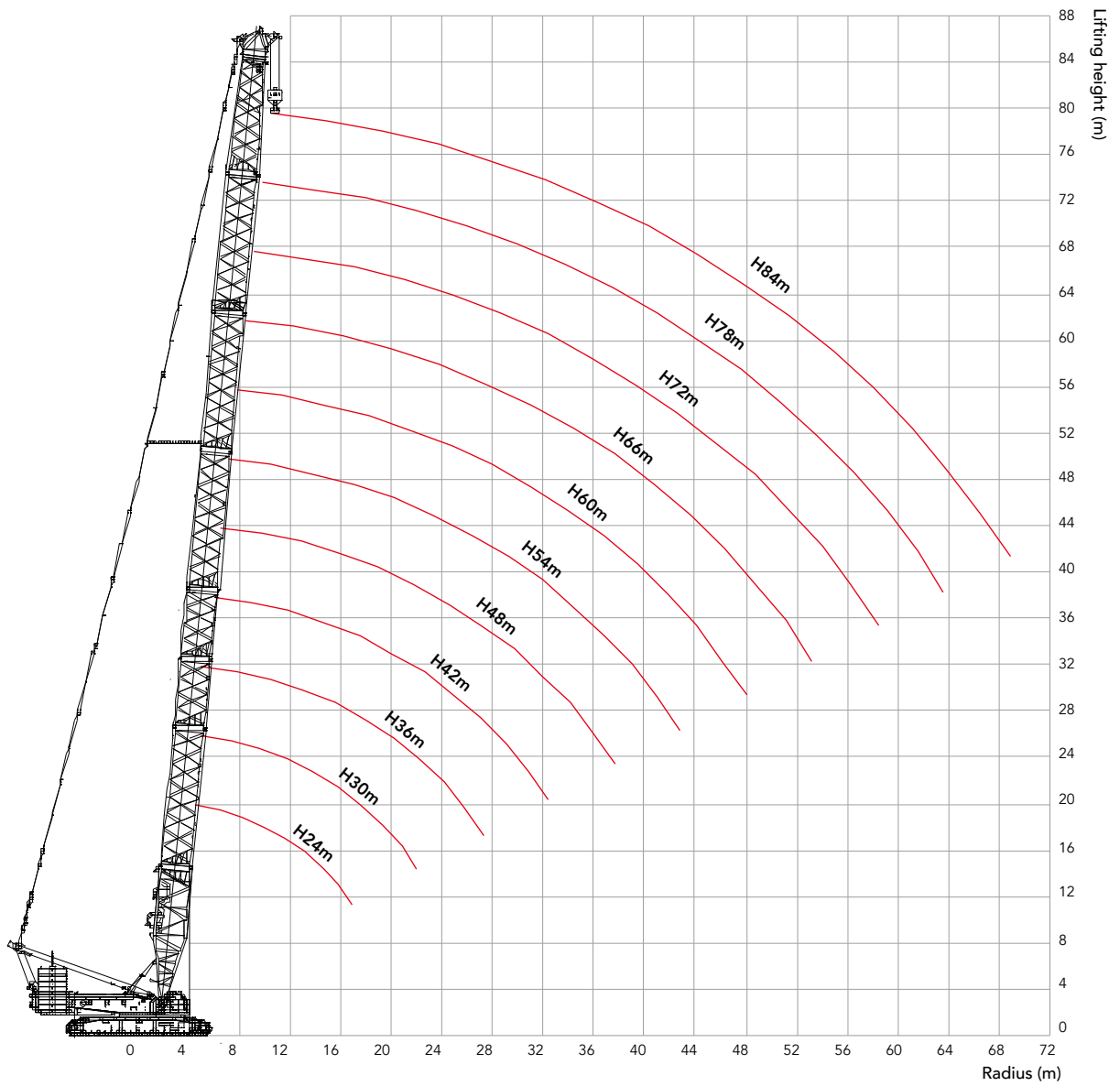
Boom Combination in H				
Boom length(m)	Insert			
	6m/(H6)	12mA/(H8A)	12mA/(H8B)	12mA/(H8C)
24	-	-	-	-
30	1	-	-	-
36	2	-	-	-
42	1	1	-	-
48	2	1	-	-
54	1	1	1	-
60	2	1	1	-
66	1	1	2	-
72	2	1	2	-
78*	1	1	2	1
84*	2	1	2	1

Note: For combinations of 78m and 84m, marked with "\*", the mid-point suspension cable must be used otherwise, the boom system may break. The use of mid-point suspension cable must be strictly in accordance with the Operation Manual.

Attention: If the boom length is 78m and more, the crane must boom up from side by side erection outrigger, otherwise, the crane may tip over!



## Working Radius in H

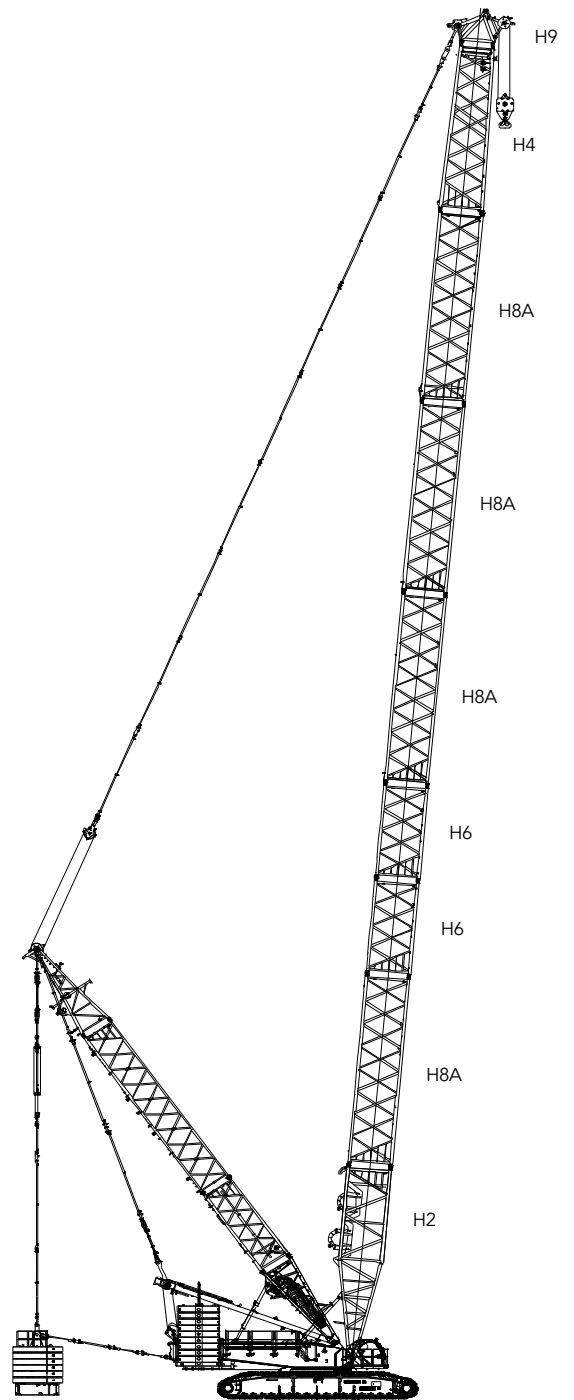


**Load Chart of H**

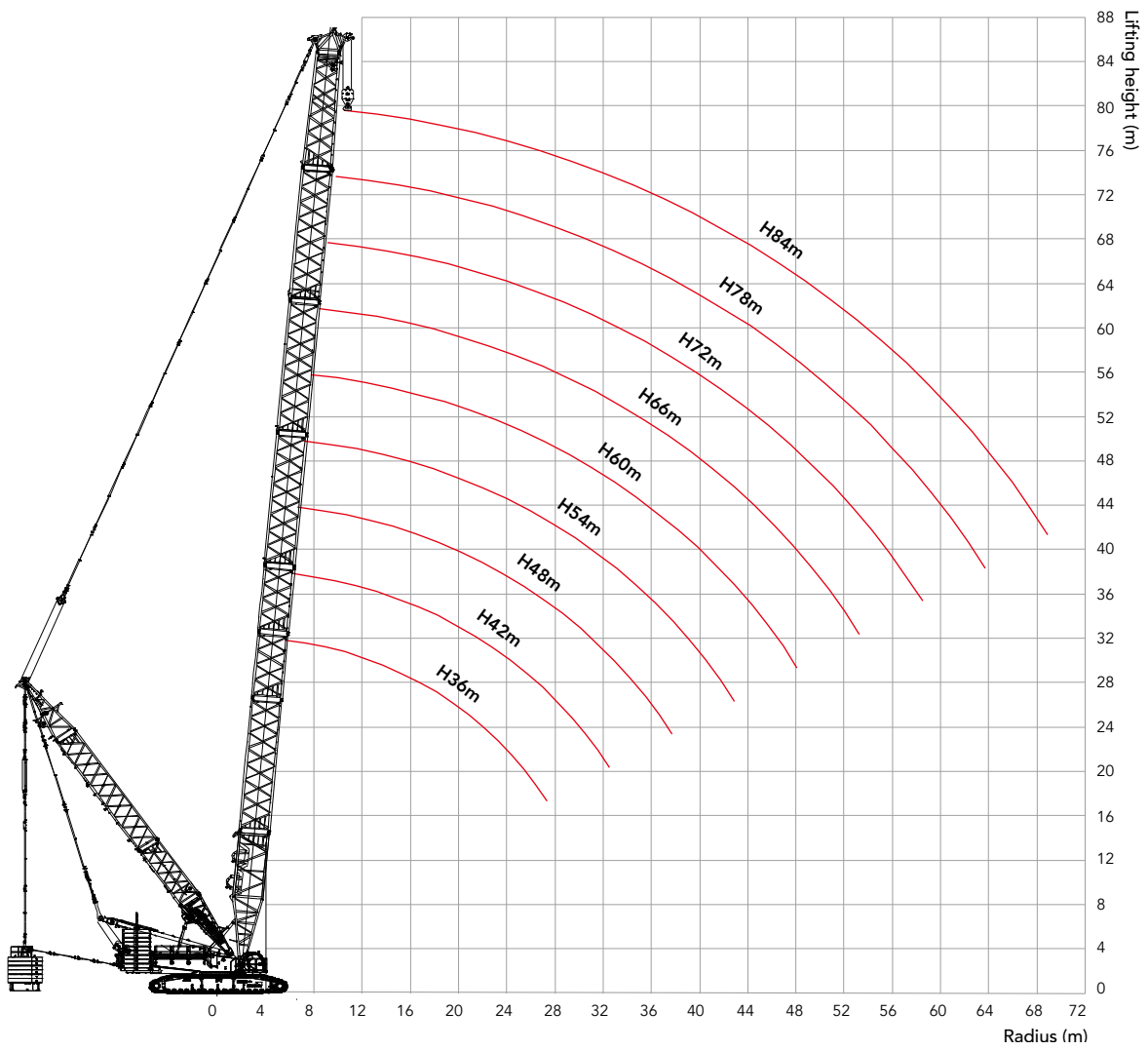
SCC5500A Crawler Crane-H Configuration												
Boom length 24m~84m,Rear counterweight 200t, Carbody counterweight 50t												
Radius(m)	Boom length(m)										Radius(m)	
	24	30	36	42	48	54	60	66	72	78		84
6	550											6
7	456	456	456									7
8	391	391	391	391	370							8
9	342	342	342	342	324	308	293					9
10	303	304	304	303	288	275	263	251	240			10
11	272	273	273	271	259	248	238	228	219	210	202	11
12	247	247	247	245	235	226	217	209	201	193	185	12
14	207	207	207	205	197	191	184	177	171	165	159	14
16	178	178	178	175	170	164	159	154	148	143	139	16
18	155	155	155	153	148	144	139	135	131	126	122	18
20	133	134	135	135	131	127	123	120	116	112	109	20
22	116	117	118	118	117	114	110	107	104	101	97.4	22
24		104	104	104	104	103	99.5	96.8	93.8	90.7	87.8	24
26		92.4	92.9	92.9	92.6	92.5	90.4	87.9	85.2	82.4	79.7	26
28		83	83.6	83.6	83.3	83.1	82.5	80.2	77.7	75.1	72.6	28
30			75.7	75.5	75.4	75.2	74.6	73.5	71.2	68.7	66.4	30
32			68.8	68.9	68.6	68.4	67.8	67.4	65.5	63.1	60.9	32
34				63	62.7	62.5	61.9	61.5	60.4	58.2	56.1	34
36				57.8	57.5	57.4	56.7	56.3	55.5	53.7	51.7	36
38				53.2	52.9	52.8	52.2	51.7	51	49.7	47.8	38
40					48.9	48.7	48.1	47.7	46.9	45.9	44.2	40
44					41.8	41.8	41.2	40.7	40	39	38.1	44
48						36	35.5	35	34.3	33.3	32.4	48
52							30.7	30.3	29.5	28.5	27.6	52
56								26.2	25.5	24.5	23.6	56
60									22	21	20.1	60
64									18.9	18	17.1	64
68										15.3	14.4	68
72											12	72

## Boom Combination of HDB

Boom Combination of HDB				
Boom length(m)	Insert			
	6m/ (H6)	12mA/ (H8A)	12mB/ (H8B)	12mC/ (H8C)
36	-	1	-	-
42	1	1	-	-
48	2	1	-	-
54	1	1	1	-
60	2	1	1	-
66	1	1	2	-
72	2	1	2	-
78	1	1	2	1
84	2	1	2	1



## Working Radius of HDB





Unit: t

## Load Chart of HDB

SCC5500A Crawler Crane-HDB Configuration										
Boom length 36m~84m, Superlift radius 16m, Superlift counterweight 250t, Rear counterweight 160t, Carbody counterweight 50t										
Boom length(m)										
Radius(m)	36	42	48	54	60	66	72	78	84	Radius(m)
7	550*									7
8	550*	480*	452*							8
9	550*	479*	450*	410*	388*					9
10	550*	482*	452*	409*	389*	347*	315*			10
11	550	481	455*	412*	389*	347*	317*	263*	221*	11
12	550	484	453	411*	389*	349*	316*	263*	222*	12
14	462	462	455	414	391	350*	317*	263*	222*	14
16	413	394	394	394	392	351	317	263*	222*	16
18	347	347	346	346	345	345	317	264	222*	18
20	309	309	308	308	308	307	307	263	221*	20
22	278	278	277	277	277	276	276	263	221	22
24	253	253	252	252	251	251	250	249	220	24
26	231	231	231	231	230	230	229	228	219	26
28	213	213	212	212	212	211	210	210	209	28
30	197	197	196	196	196	195	195	194	193	30
32	183	183	183	183	182	182	181	180	179	32
34		171	171	170	170	169	169	168	167	34
36		160	160	160	159	159	158	157	156	36
38		151	150	150	149	149	148	147	146	38
40			141	141	141	140	140	139	138	40
44			126	126	126	125	125	124	123	44
48				114	113	113	112	111	110	48
52					103	102	102	101	99.7	52
56						93.3	92.5	91.6	90.7	56
60							84.7	83.8	82.9	60
64							77.8	76.9	76.1	64
68								70.8	70	68
72									64.6	72

Note: Values with "\*" means the superlift counterweight shall not leave the ground

## Boom Combination of HJ

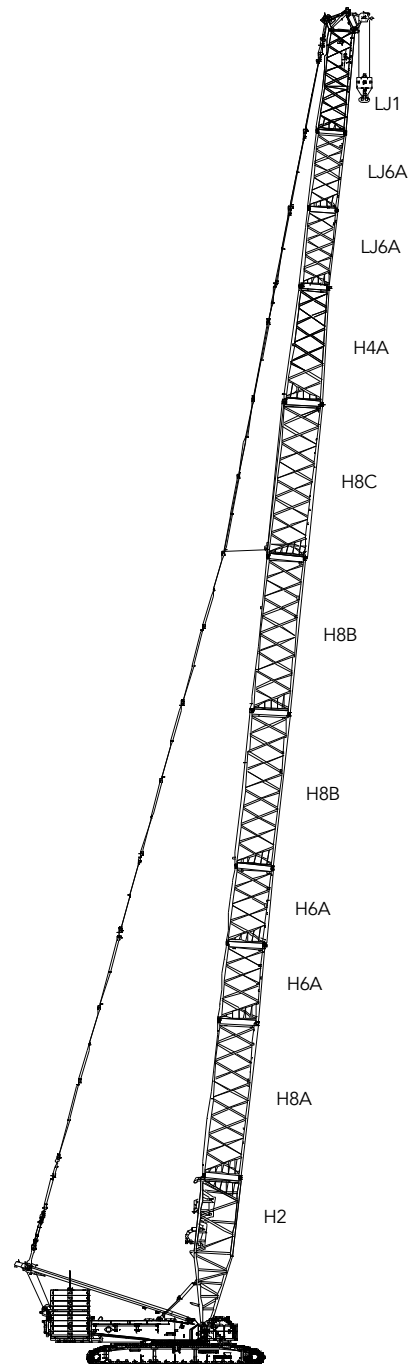
### Boom Combination of HJ

Boom length(m)	Boom insert				Jib insert
	6m/(H6)	12mA/ (H8A)	12mB/ (H8B)	12mC/ (H8C)	6m/ (LJ6A)
48	1	1	–	–	–
54	2	1	–	–	–
60	1	1	1	–	–
66	2	1	1	–	–
72	1	1	2	–	–
78*	2	1	2	–	–
84*	1	1	2	1	–
90*	2	1	2	1	–
96*	2	1	2	1	1
102*	2	1	2	1	2

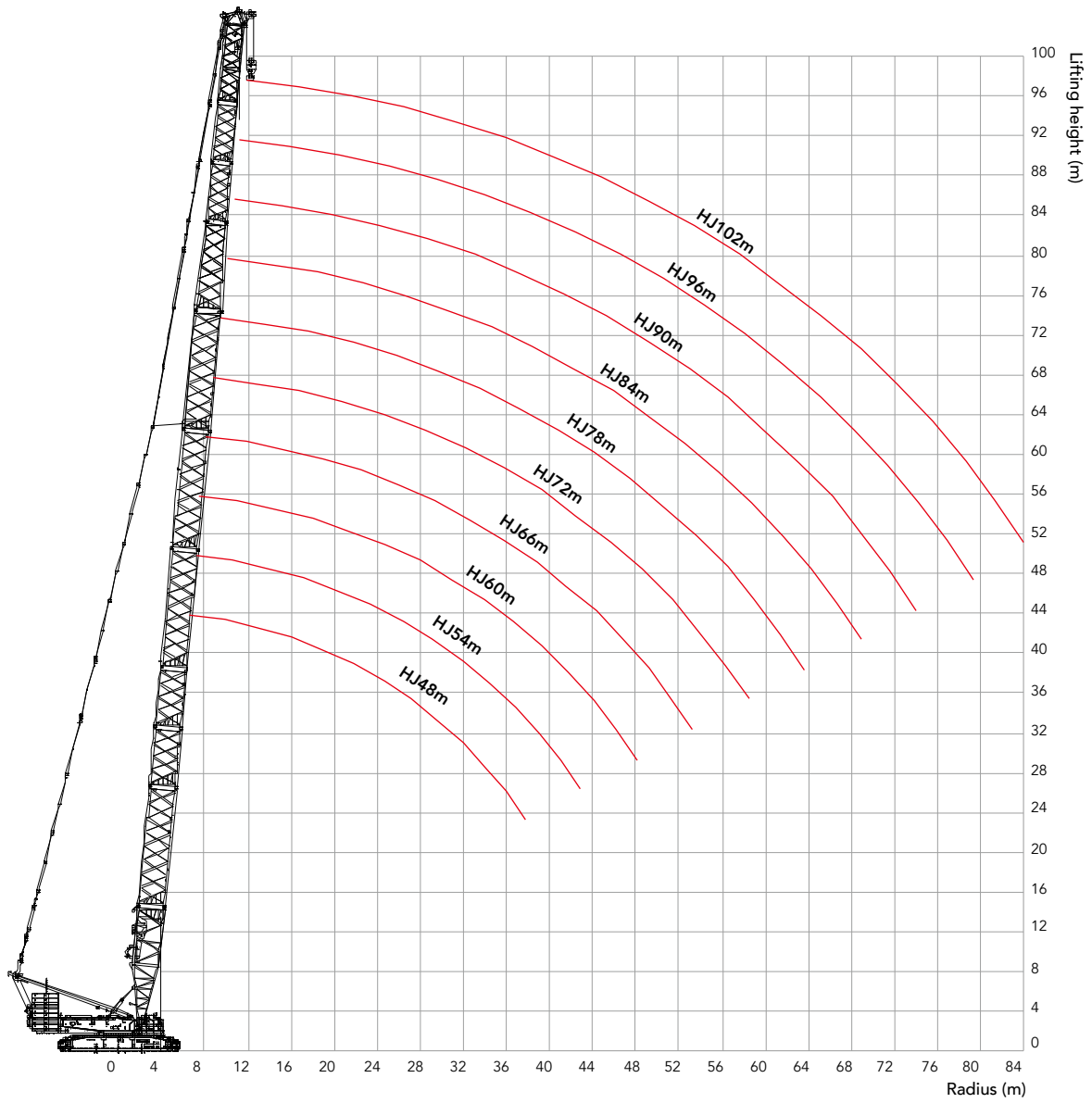
Note: For combinations of 78m and more, marked with "\*\*", the mid-point suspension cable must be used otherwise, the boom system may break.

The use of mid-point suspension cable must be strictly in accordance with the Operation Manual.

Attention: If the boom length is 84m and more, the crane must boom up from side by side erection outrigger, otherwise, the crane may tip over!



### Load Chart of HJ



**Load Chart of HJ**

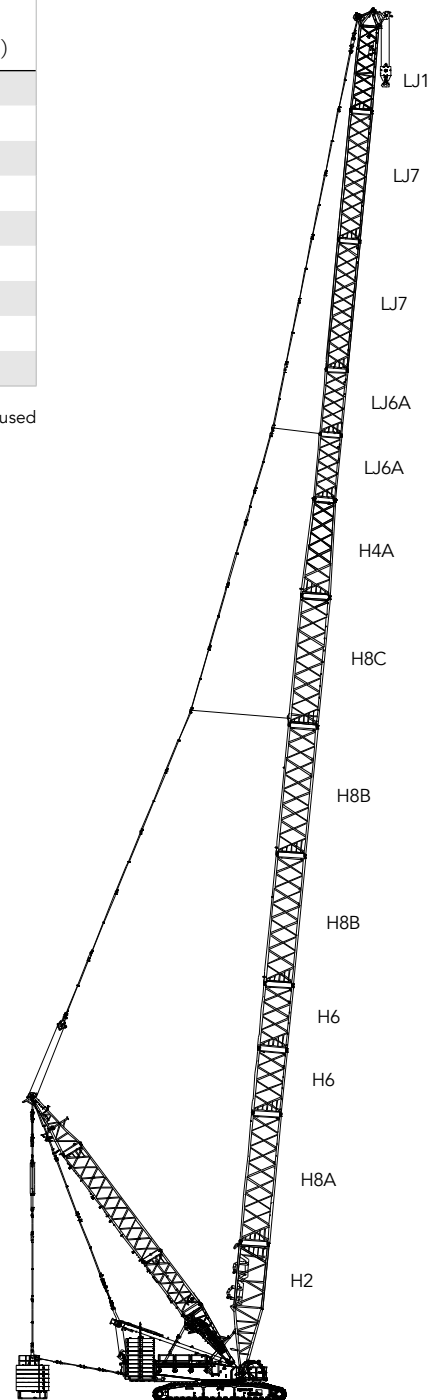
SCC5500A Crawler Crane-HJ Configuration											
Boom length 48m~102m, Rear counterweight 200t, Carbody counterweight 50t											
Radius(m)	Boom length (m)										Radius(m)
	48	54	60	66	72	78	84	90	96	102	
8	280										8
9	283	277	274								9
10	285	278	266	254	244						10
11	262	251	241	231	222	214	205				11
12	238	229	220	212	204	196	189	170	159		12
14	201	194	187	181	175	169	163	157	152	135	14
16	173	167	162	157	152	147	142	137	133	129	16
18	152	147	143	138	134	130	126	122	118	115	18
20	134	131	127	123	120	116	112	109	106	103	20
22	121	117	114	111	108	104	101	98	95.3	92.7	22
24	107	106	103	100	97.6	94.7	91.6	88.8	86.4	84.1	24
26	95.9	95.5	94.1	91.4	89	86.3	83.5	80.9	78.7	76.6	26
28	86.6	86.2	85.8	83.8	81.5	79.1	76.5	74	72	70.1	28
30	78.7	78.3	77.9	77.1	75	72.8	70.3	68	66.2	64.3	30
32	72	71.5	71.2	70.5	69.3	67.2	64.8	62.7	61	59.2	32
34	66.1	65.6	65.3	64.6	64.1	62.2	60	57.9	56.3	54.7	34
36	60.9	60.5	60.1	59.5	58.9	57.8	55.6	53.6	52.1	50.6	36
38	56.4	55.9	55.6	54.9	54.4	53.6	51.7	49.8	48.4	46.9	38
40	52.3	51.9	51.5	50.9	50.3	49.5	48.2	46.3	45	43.6	40
44	45.3	44.9	44.6	43.9	43.4	42.6	41.6	40.3	39	37.7	44
48		39.2	38.9	38.3	37.7	36.9	35.9	35	34	32.7	48
52			34.2	33.5	33	32.2	31.1	30.2	29.7	28.5	52
56				29.5	29	28.1	27.1	26.2	25.7	24.8	56
60					25.5	24.7	23.7	22.7	22.2	21.6	60
64					22.4	21.7	20.6	19.7	19.2	18.6	64
68						19	18	17.1	16.5	16	68
72							15.6	14.7	14.2	13.6	72
76								12.6	12.1	11.5	76
80								10.7	10.2	9.7	80
84									8.5	8	84
88										6.4	88

## Boom Combination of HJDB

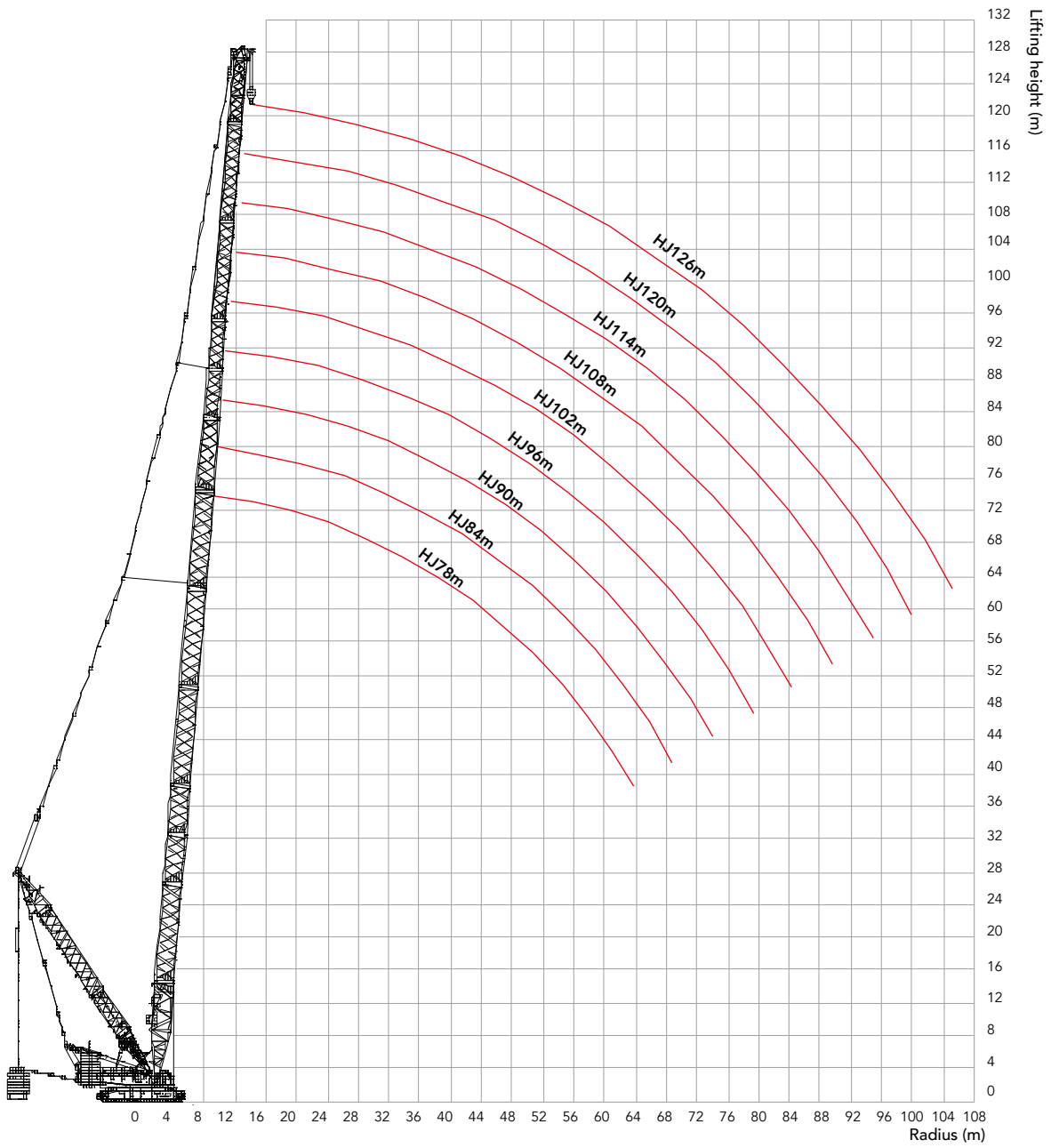
Boom Combination of HJDB						
Boom length(m)	Boom insert				Jib insert	
	6m/(H6)	12mA/(H8A)	12mB/(H8B)	12mC/(H8C)	6m/(LJ6A)	12m/(LJ7A)
78	2	1	2	-	-	-
84	1	1	2	1	-	-
90	2	1	2	1	-	-
96*	2	1	2	1	1	-
102*	2	1	2	1	2	-
108*	2	1	2	1	1	1
114*	2	1	2	1	2	1
120*	2	1	2	1	1	2
126*	2	1	2	1	2	2

Note: For combinations of 96m and more, marked with "\*", the mid-point suspension cable must be used otherwise, the boom system may break.

The use of mid-point suspension cable must be strictly in accordance with the Operation Manual.



# Working Radius in HJDB



Unit: t

## Load Chart of HJDB

SCC5500A Crawler Crane-HJDB Configuration										
Boom length 78m~126m, Superlift radius 16m, Superlift counterweight 250t, Rear counterweight 160t, Carbody counterweight 50t										
Radius(m)	Boom length(m)									Radius(m)
	78	84	90	96	102	108	114	120	126	
12	258*	228*	194*	166*						12
14	261*	228*	195*	166*	143*	123*	107*	92.5*		14
16	263*	228*	195*	166*	144*	123*	107*	92.5*	79.5*	16
18	266	228*	194*	166*	144*	123*	108*	91.7*	78.8*	18
20	269	228*	195*	167*	144*	123*	107*	90.9*	78.0*	20
22	270	228	194*	167*	143*	123*	107*	90.1*	77.2*	22
24	253	228	194	167*	143*	123*	106*	89.2*	76.4*	24
26	231	228	193	167	143*	123*	105*	88.6*	75.6*	26
28	213	212	192	167	142*	122*	104*	87.7*	74.7*	28
30	197	196	190	167	141	121*	103*	86.8*	73.9*	30
32	183	182	182	166	140	120*	103*	85.9*	73.1*	32
34	171	170	169	165	138	119*	102*	85.0*	72.2*	34
36	160	159	159	158	134	118	101*	84.1*	71.4*	36
38	151	150	149	148	130	117	99.8*	83.2*	70.5*	38
40	142	141	140	140	127	116	97.4	82.3*	69.7*	40
44	127	126	125	125	120	115	91.4	77.5*	66.6*	44
48	115	114	113	112	112	112	86.6	73.2*	62.4*	48
52	104	103	102	102	101	101	82	69	58.8*	52
56	95.3	94.3	93.4	92.9	92.3	92	77.9	65.4	55.2*	56
60	87.5	86.5	85.6	85.1	84.5	84.2	74.2	62.1	52.5*	60
64	80.6	79.7	78.8	78.2	77.7	77.4	71.4	59.3	49.9*	64
68	74.6	73.6	72.7	72.2	71.7	71.4	68.7	56.8	47.8*	68
72		68.2	67.3	66.9	66.3	66	65.4	54.8	46	72
76			62.5	62	61.5	61.2	60.6	53.2	44.3	76
80			58.2	57.7	57.2	56.9	56.3	51.7	42.9	80
84				53.8	53.3	53	52.4	50.6	41.6	84
88					49.7	49.4	48.8	48.5	40.7	88
92						46.2	45.6	45.2	40	92
96						43.2	42.6	42.2	39.5	96
100							39.8	39.5	38.8	100
104								36.9	36.3	104
108									33.9	108

## Boom Combination of LJ(DB)

### Boom Combination of LJ(DB)

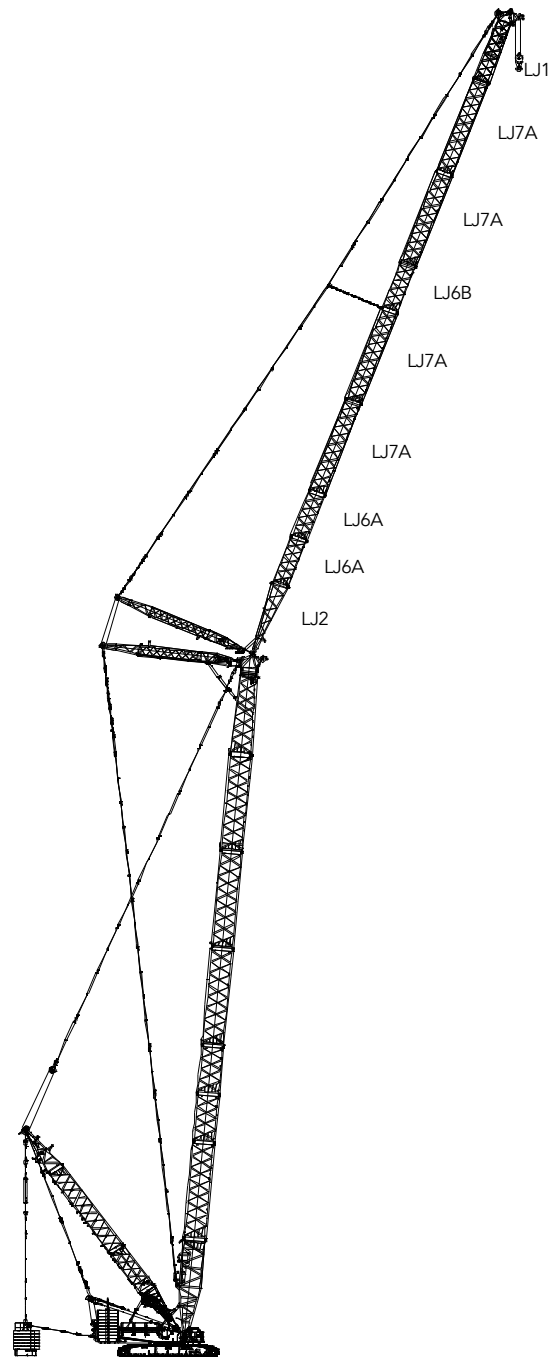
Jib length(m)	Jib insert				Boom length(m)
	6 mA	6mB	12mA	12mB	
24	1	-	-	-	36~60(LJ) 36~84(LJDB) 60m+72/84+84 (Longest boom+ Longest jib) 85° 75° 65°
30	2	-	-	-	
36	1	-	1	-	
42	2	-	1	-	
48	1	-	2	-	
54	2	-	2	-	
60	2	1	2	-	
66*	2	-	2	1	
72*	2	1	2	1	
78*	2	-	2	2	
84*	2	1	2	2	

#### Note:

Jib length of LJ: 24m~72m; Jib length of LJDB: 24m~84m.

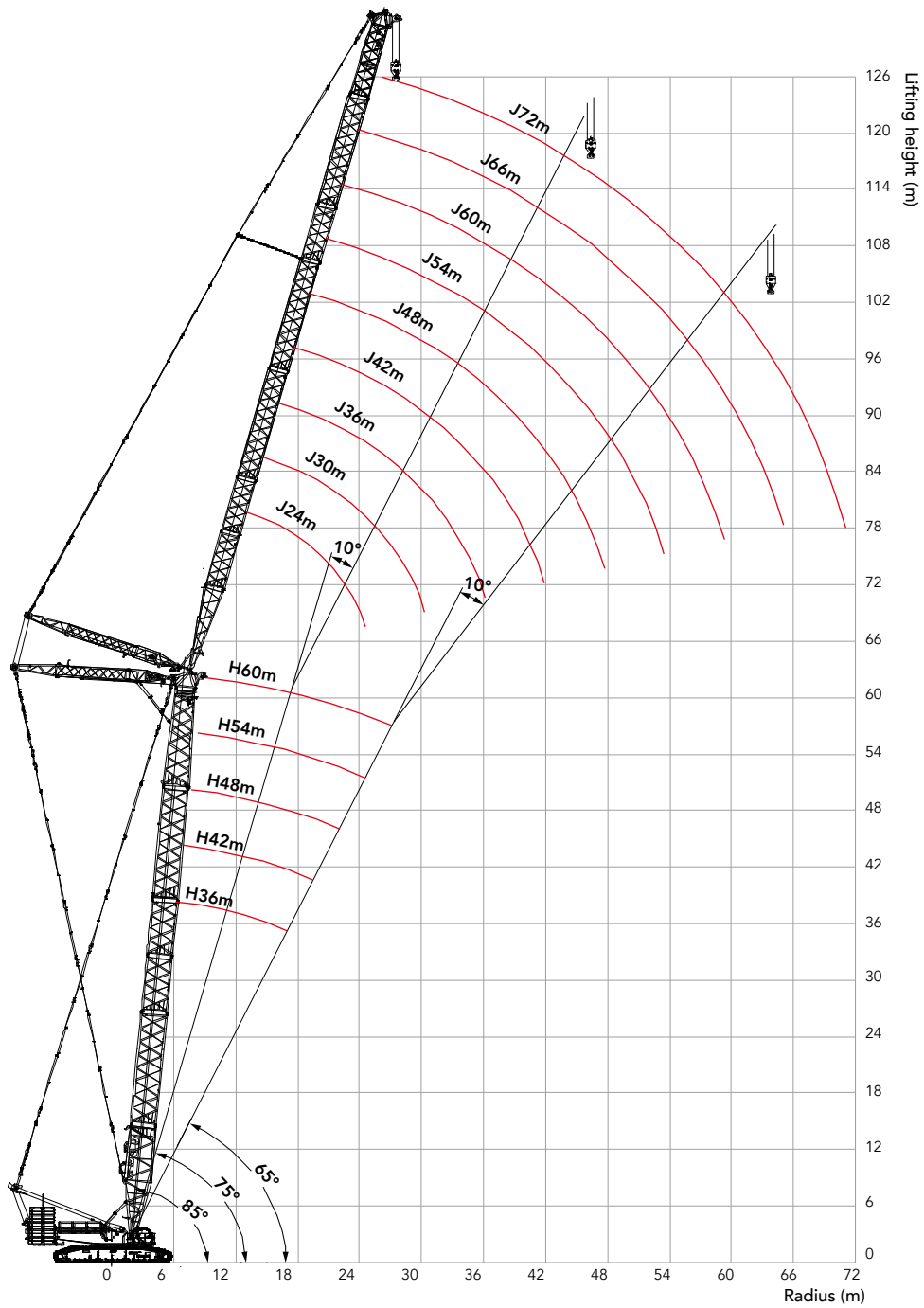
For jib combinations of 66m~84m, marked with "\*", the mid-point suspension cable must be used, otherwise, the boom system may break.

Attention: For LJ, crane's booming up must be strictly in accordance with the Operation Manual, otherwise, the crane may tip over !





## Working Radius in LJ



**Load Chart of LJ**

SCC5500A Crawler Crane-LJ Configuration 1/5										
Boom length 36m, Boom angle 85°, Jib length 24~72m, Rear counterweight 200t, Carbody counterweight 50t										
Radius (m)	Jib length(m)									Radius (m)
	24	30	36	42	48	54	60	66	72	
14	199									14
16	174	168								16
18	155	150	145	141						18
20	139	135	131	127	123					20
22	126	122	119	115	112	109				22
24	115	112	109	106	103	100	97.3	94.9		24
26	106	103	100	97.5	94.9	92.2	89.7	87.5	81.5	26
28		95.6	93.1	90.3	88	85.5	83.1	81.1	78.9	28
30		89	86.7	84	81.9	79.5	77.3	75.5	73.4	30
32		82.2	81	78.5	76.5	74.3	72.2	70.5	68.5	32
34			76	73.6	71.7	69.6	67.6	66	64.1	34
36			70.5	69.2	67.4	65.4	63.5	62	60.2	36
38			65.7	65.1	63.5	61.6	59.8	58.3	56.6	38
40				60.8	60	58.2	56.4	55	53.4	40
44				53.5	53.2	52.2	50.6	49.3	47.7	44
48					47.2	46.6	45.6	44.4	42.9	48
52						41.6	41	40.2	38.8	52
56							36.8	36.4	35.2	56
60							33.1	32.8	32.1	60
64								29.6	29	64
68									26.2	68

Unit: t

## Load Chart of LJ

SCC5500A Crawler Crane-LJ Configuration 2/5										
Boom length 42m, Boom angle 85°, Jib length 24~72m, Rear counterweight 200t, Carbody counterweight 50t										
Radius (m)	Jib length(m)									Radius (m)
	24	30	36	42	48	54	60	66	72	
14	191									14
16	168	162								16
18	149	145	141							18
20	135	131	127	123	119					20
22	122	119	116	112	109	106				22
24	112	109	106	103	100	97.1	94.4			24
26	103	100	97.7	94.8	92.3	89.6	87.1	85		26
28	95.9	93.1	90.6	87.9	85.5	83.1	80.8	78.8	75.5	28
30		86.7	84.4	81.8	79.7	77.3	75.2	73.4	71.3	30
32		81.1	78.9	76.5	74.5	72.3	70.2	68.5	66.5	32
34			74.1	71.7	69.8	67.8	65.8	64.2	62.3	34
36			69.7	67.5	65.7	63.7	61.8	60.3	58.5	36
38			65.6	63.7	61.9	60	58.2	56.8	55.1	38
40				60.2	58.5	56.7	55	53.6	51.9	40
44				53.4	52.6	50.9	49.3	48	46.4	44
48					47.1	46	44.5	43.3	41.8	48
52						41.5	40.3	39.2	37.8	52
56							36.7	35.7	34.3	56
60							33	32.6	31.3	60
64								29.5	28.6	64
68									26.1	68

**Load Chart of LJ**

SCC5500A Crawler Crane-LJ Configuration 3/5										
Boom length 48m, Boom angle 85°, Jib length 24~72m, Rear counterweight 200t, Carbody counterweight 50t										
Radius (m)	Jib length(m)									Radius (m)
	24	30	36	42	48	54	60	66	72	
16	162	156								16
18	144	140	136							18
20	130	126	123	119						20
22	119	115	112	109	106	102				22
24	109	106	103	99.7	97	94.1	91.5			24
26	100	97.5	95	92.1	89.6	87	84.5	80.2		26
28	93.2	90.5	88.1	85.4	83.1	80.7	78.4	76.5	69.3	28
30		84.4	82.2	79.6	77.5	75.2	73	71.2	67.7	30
32		78.9	76.9	74.4	72.5	70.3	68.3	66.6	64.6	32
34		74.2	72.2	69.9	68	65.9	64	62.4	60.5	34
36			68	65.7	64	62	60.1	58.6	56.8	36
38			64.2	62	60.3	58.4	56.7	55.2	53.5	38
40				58.7	57	55.2	53.5	52.1	50.5	40
44				52.8	51.3	49.6	48	46.7	45.1	44
48					46.4	44.8	43.3	42.1	40.6	48
52						40.7	39.3	38.1	36.7	52
56						37.1	35.8	34.7	33.3	56
60							32.7	31.7	30.4	60
64								29	27.7	64
68									25.4	68
72									23.3	72

Unit: t

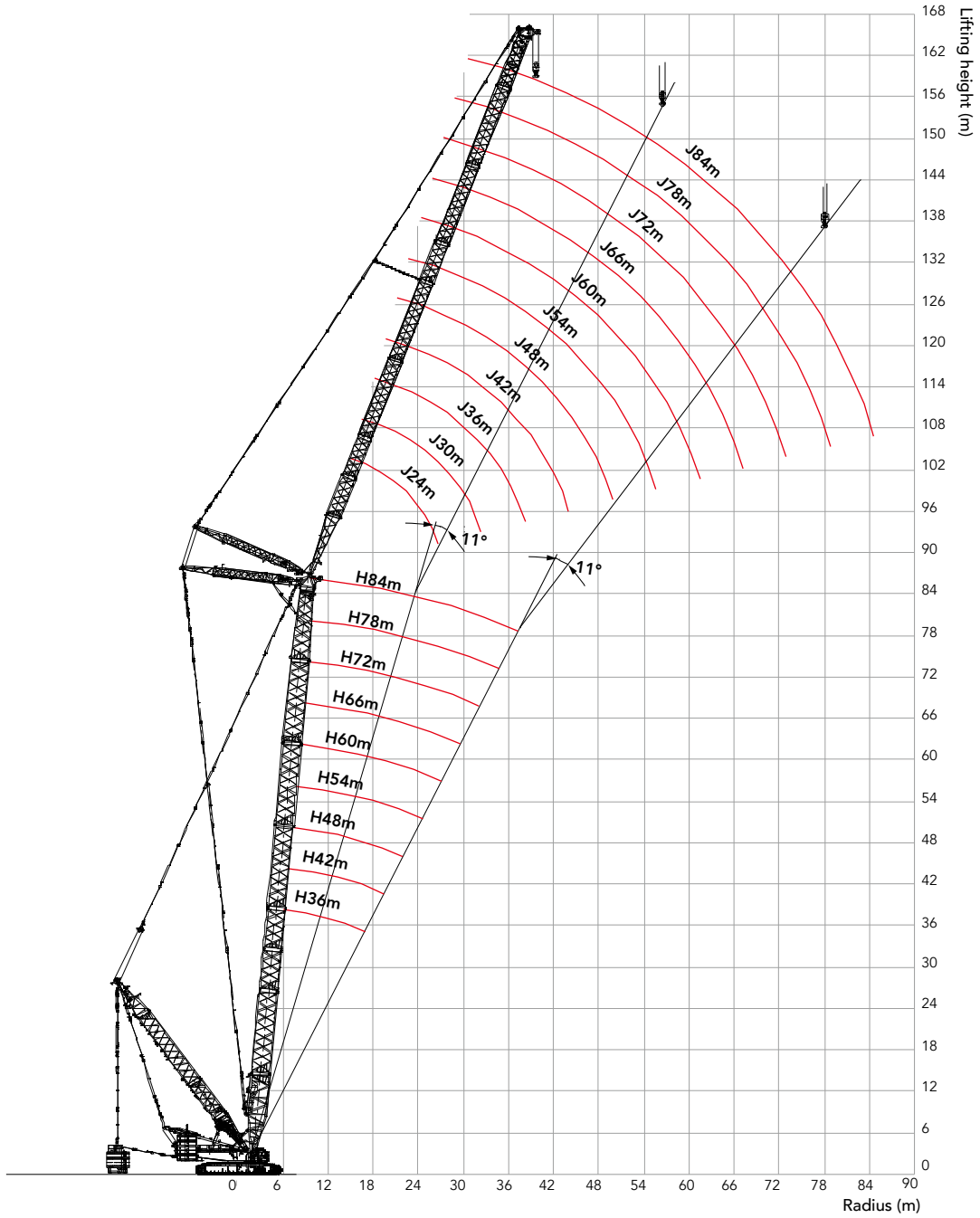
## Load Chart of LJ

SCC5500A Crawler Crane-LJ Configuration 4/5										
Boom length 54m, Boom angle 85°, Jib length 24~72m, Rear counterweight 200t, Carbody counterweight 50t										
Radius (m)	Jib length(m)									Radius (m)
	24	30	36	42	48	54	60	66	72	
16	156									16
18	139	135	131							18
20	126	122	119	115						20
22	115	112	108	105	102					22
24	106	102	99.7	96.7	94	91.2	84.8			24
26	97.5	94.7	92.2	89.3	86.9	84.3	81.9	72.9		26
28	90.6	88	85.6	83	80.7	78.3	76	71.1	63.4	28
30		82	79.9	77.4	75.3	73	70.9	68.9	61.9	30
32		76.8	74.8	72.4	70.4	68.3	66.3	64.6	60.1	32
34		72.2	70.2	68	66.1	64.1	62.1	60.5	58.2	34
36			66.2	64	62.2	60.3	58.4	56.9	55.1	36
38			62.5	60.4	58.7	56.8	55.1	53.6	51.9	38
40			59.2	57.1	55.5	53.7	52	50.6	49	40
44				51.4	49.9	48.2	46.6	45.4	43.8	44
48					45.2	43.6	42.1	40.9	39.4	48
52						39.6	38.2	37	35.6	52
56						36.2	34.8	33.7	32.3	56
60							31.8	30.8	29.4	60
64								28.2	26.9	64
68									24.6	68
72									22.5	72

**Load Chart of LJ**

SCC5500A Crawler Crane-LJ Configuration 5/5										
Boom length 60m, Boom angle 85°, Jib length 24~72m, Rear counterweight 200t, Carbody counterweight 50t										
Radius (m)	Jib length(m)									Radius (m)
	24	30	36	42	48	54	60	66	72	
16	150									16
18	134	130								18
20	122	118	115	111						20
22	111	108	105	102	98.8					22
24	102	99.2	96.6	93.5	91	86.3				24
26	94.5	91.8	89.3	86.5	84.1	81.6	74.3			26
28	87.8	85.3	83	80.4	78.2	75.8	71.8	64.5	57.9	28
30		79.6	77.5	75	73	70.7	68.6	62.4	56.2	30
32		74.6	72.6	70.2	68.3	66.2	64.2	60.3	54.4	32
34		70.1	68.2	66	64.1	62.1	60.2	57.7	52.6	34
36			64.3	62.1	60.4	58.4	56.6	55.1	50.8	36
38			60.7	58.7	57	55.1	53.4	51.9	48.8	38
40			57.5	55.5	53.9	52.1	50.4	49	47	40
44				50	48.5	46.8	45.2	43.9	42.4	44
48					43.9	42.3	40.8	39.6	38.1	48
52						38.4	37	35.9	34.5	52
56							34	33.5	32.6	56
60								29.5	29.3	60
64									26.1	64
68									23.1	68
72										72

### Working Radius in LJDB



**Load Chart of LJDB****SCC5500A Crawler Crane-LJDB Configuration 1/9**

Boom length 36m, Boom angle 85°, Jib length 24~84m, Superlift radius 16m, Superlift counterweight 250t,  
Rear counterweight 160t, Carbody counterweight 50t

Radius(m)	Jib length(m)										Radius(m)	
	24	30	36	42	48	54	60	66	72	78		84
14	274*											14
16	264*	252*										16
18	257*	242*	223*	189*								18
20	241	227*	212*	183*	156*							20
22	225	215	201*	175*	151*	130*						22
24	210	202	190	169*	147*	127*	109*	94.3*				24
26	197	192	180	161*	142*	123*	107*	92.8*	81.3*			26
28		180	168	151*	135*	120*	104*	91.2*	79.9*	68.0*		28
30		164	155	143*	130*	115*	101*	89.1*	78.6*	67.5*	57.7*	30
32		151	144	135	123*	111*	98.6*	87.0*	76.8*	66.6*	57.2*	32
34			134	126	117*	106*	95.4*	84.9*	75.4*	65.4*	56.7*	34
36			124	118	111*	101*	91.6*	82.2*	73.6*	64.1*	56.2*	36
38			114	110	105*	96.9*	88.5*	79.6*	71.8*	62.8*	55.5*	38
40				103	98.6*	92.3*	84.7*	77.5*	70.0*	61.2*	54.4*	40
44				89.1*	86.9*	83.2*	77.9*	71.7*	65.6*	58.4*	52.2*	44
48					76.4*	74.9*	71.2*	66.5*	61.7*	55.2*	49.8*	48
52						66.4*	64.5*	61.2*	57.2*	51.1*	47.4*	52
56							57.9*	56.2*	53.0*	46.3*	44.6*	56
60							52.4*	51.3*	49.0*	41.6*	42.2*	60
64								46.3*	45.0*	37.6*	39.5*	64
68									41.5*	33.7*	37.0*	68
72										30.8*	34.5*	72
76										27.2*	32.2*	76
80											29.5*	80



Unit: t

## Load Chart of LJDB

SCC5500A Crawler Crane-LJDB Configuration 2/9												
Boom length 42m, Boom angle 85°, Jib length 24~84m, Superlift radius 16m, Superlift counterweight 250t, Rear counterweight 160t, Carbody counterweight 50t												
Radius(m)	Jib length(m)										Radius(m)	
	24	30	36	42	48	54	60	66	72	78		84
14	273*											14
16	263*	247*										16
18	256*	241*	205*									18
20	246	227*	196*	170*	146*							20
22	228	211	187*	163*	142*	122*						22
24	213	196	177*	156*	137*	119*	103*					24
26	193	181	166*	148*	132*	116*	101*	88.3*				26
28	175	166	155*	141*	126*	112*	98.1*	86.4*	75.9*	64.9*		28
30		152	144*	132*	120*	108*	95.2*	84.5*	74.3*	64.4*	54.9*	30
32		140	134	125*	115*	103*	92.3*	82.1*	73.1*	63.4*	54.5*	32
34			124*	117*	109*	99.2*	89.4*	79.7*	71.4*	62.2*	54.1*	34
36			114*	109*	103*	95.0*	85.9*	77.2*	69.5*	61.1*	53.7*	36
38			105*	102*	97.0*	90.1*	83.0*	74.8*	67.9*	59.6*	53.0*	38
40				94.9*	91.0*	85.9*	79.5*	72.4*	65.8*	58.1*	52.0*	40
44				82.7*	80.5*	76.9*	72.6*	67.0*	61.7*	55.1*	49.4*	44
48					70.7*	69.3*	65.8*	61.9*	57.7*	51.9*	47.2*	48
52						61.6*	59.7*	56.7*	53.3*	48.7*	44.4*	52
56							53.6*	51.7*	49.4*	45.4*	41.9*	56
60							48.2*	47.1*	45.2*	42.5*	39.3*	60
64								42.6*	41.5*	38.0*	36.8*	64
68									37.9*	34.3*	34.4*	68
72										30.9*	31.8*	72
76										28.0*	29.4*	76
80											27.3*	80

**Load Chart of LJDB****SCC5500A Crawler Crane-LJDB Configuration 3/9**

Boom length 48m, Boom angle 85°, Jib length 24~84m, Superlift radius 16m, Superlift counterweight 250t,  
Rear counterweight 160t, Carbody counterweight 50t

Radius(m)	Jib length(m)										Radius(m)	
	24	30	36	42	48	54	60	66	72	78		84
16	258*	222*										16
18	242*	211*	182*									18
20	223*	199*	175*	151*								20
22	205*	185*	166*	146*	127*	111*						22
24	188	173*	156*	140*	123*	108*	94.5*					24
26	171	160*	147*	133*	119*	105*	92.0*	81.1*				26
28	155*	147*	137*	125*	113*	101*	89.5*	79.0*	69.9*			28
30		135*	128*	118*	109*	97.4*	86.9*	77.4*	68.9*	59.8*	51.1*	30
32		123*	119*	111*	103*	93.6*	84.3*	75.2*	67.0*	58.9*	50.8*	32
34		114*	110*	104*	97.6*	89.1*	81.1*	73.0*	65.5*	57.6*	50.5*	34
36			102*	97.4*	92.1*	85.3*	77.9*	70.8*	63.7*	56.3*	50.0*	36
38			94.4*	90.7*	86.7*	80.9*	74.8*	68.1*	61.8*	54.9*	49.1*	38
40				84.8*	81.3*	77.0*	71.6*	65.9*	59.9*	53.6*	47.9*	40
44				73.1*	71.9*	68.9*	64.8*	60.8*	56.2*	50.7*	45.6*	44
48					63.1*	61.4*	58.6*	55.5*	52.1*	47.4*	43.1*	48
52						54.6*	53.1*	50.8*	47.8*	44.3*	40.6*	52
56						48.3*	47.7*	46.1*	44.2*	40.9*	38.2*	56
60							42.5*	41.5*	40.3*	37.9*	35.6*	60
64								37.4*	36.5*	34.9*	33.0*	64
68									33.2*	32.0*	30.6*	68
72									30.2*	29.3*	28.2*	72
76										26.9*	25.9*	76
80											23.7*	80

Unit: t

## Load Chart of LJDB

SCC5500A Crawler Crane-LJDB Configuration 4/9												
Boom length 54m, Boom angle 85°, Jib length 24~84m, Superlift radius 16m, Superlift counterweight 250t, Rear counterweight 160t, Carbody counterweight 50t												
Radius(m)	Jib length(m)										Radius(m)	
	24	30	36	42	48	54	60	66	72	78		84
16	226*											16
18	213*	187*	162*									18
20	197*	176*	155*	136*								20
22	182*	165*	148*	131*	115*							22
24	166*	153*	140*	125*	111*	98.2*	86.2*					24
26	152*	142*	131*	119*	107*	95.5*	84.0*	74.5*				26
28	139*	131*	122*	113*	102*	92.1*	81.7*	72.6*	64.7*			28
30		121*	115*	106*	97.1*	88.1*	79.3*	71.1*	63.4*	55.3*		30
32		112*	106*	99.4*	92.7*	84.6*	76.4*	68.7*	61.7*	54.5*	47.1*	32
34		103*	98.6*	93.3*	87.7*	80.5*	73.5*	66.7*	60.0*	53.3*	46.9*	34
36			91.4*	87.2*	82.7*	76.9*	70.6*	64.6*	58.3*	51.8*	46.4*	36
38			84.4*	81.3*	77.8*	72.9*	67.8*	62.2*	56.6*	50.6*	45.4*	38
40			78.3*	76.1*	72.9*	69.3*	64.4*	59.7*	54.9*	49.1*	44.3*	40
44				66.2*	64.5*	61.9*	58.7*	54.8*	51.1*	46.3*	42.0*	44
48					56.5*	55.1*	53.0*	50.0*	47.0*	43.0*	39.5*	48
52						49.0*	47.4*	45.6*	43.2*	40.1*	36.9*	52
56						43.2*	42.4*	41.3*	39.6*	36.9*	34.5*	56
60							38.0*	37.1*	36.0*	33.8*	31.8*	60
64								33.4*	32.5*	31.1*	29.5*	64
68									29.4*	28.5*	27.2*	68
72									26.8*	26.0*	25.0*	72
76										23.7*	22.9*	76
80											20.8*	80

**Load Chart of LJDB****SCC5500A Crawler Crane-LJDB Configuration 5/9**

Boom length 60m, Boom angle 85°, Jib length 24~84m, Superlift radius 16m, Superlift counterweight 250t,  
Rear counterweight 160t, Carbody counterweight 50t

Radius(m)	Jib length(m)										Radius(m)	
	24	30	36	42	48	54	60	66	72	78		84
16	198*											16
18	186*	164*										18
20	174*	155*	139*	122*								20
22	161*	146*	132*	117*	104*							22
24	148*	136*	125*	112*	100*	89.2*						24
26	136*	126*	117*	107*	96.5*	86.1*	76.8*					26
28	125*	117*	109*	101*	92.0*	82.9*	74.7*	66.5*	59.4*			28
30		108*	102*	94.7*	87.4*	79.7*	72.0*	64.6*	57.9*	50.9*		30
32		100*	94.8*	89.1*	83.3*	76.4*	69.3*	62.8*	56.6*	50.2*	43.3*	32
34		91.6*	88.2*	83.5*	78.7*	72.7*	66.6*	60.6*	55.1*	49.1*	43.1*	34
36			81.8*	78.0*	74.1*	69.4*	63.9*	58.7*	53.2*	47.7*	42.7*	36
38			75.7*	73.3*	69.6*	65.6*	61.2*	56.4*	51.6*	46.4*	41.8*	38
40			70.5*	68.1*	65.7*	62.3*	58.1*	54.1*	49.7*	45.0*	40.6*	40
44				59.4*	57.6*	55.4*	52.7*	49.5*	46.2*	42.2*	38.5*	44
48					50.7*	49.3*	47.4*	45.0*	42.4*	38.9*	35.9*	48
52						43.8*	42.3*	40.6*	38.6*	36.2*	33.3*	52
56							38.6*	37.8*	36.6*	35.2*	33.0*	56
60								33.8*	33.1*	31.9*	30.4*	60
64									29.5*	29.0*	27.6*	64
68									26.6*	26.2*	25.3*	68
72										23.4*	22.9*	72
76											20.8*	76
80												80
84												84

Unit: t

## Load Chart of LJDB

SCC5500A Crawler Crane-LJDB Configuration 6/9												
Boom length 66m, Boom angle 85°, Jib length 24~84m, Superlift radius 16m, Superlift counterweight 250t, Rear counterweight 160t, Carbody counterweight 50t												
Radius(m)	Jib length(m)										Radius(m)	
	24	30	36	42	48	54	60	66	72	78		84
16	174*											16
18	165*	146*										18
20	154*	138*	124*									20
22	144*	131*	118*	105*	94.0*							22
24	133*	122*	112*	101*	90.5*	80.8*						24
26	122*	114*	105*	95.7*	86.9*	78.0*	70.0*					26
28	112*	106*	98.5*	91.1*	83.2*	75.5*	67.6*	60.8*				28
30	104*	97.6*	92.2*	85.8*	79.5*	72.5*	65.5*	59.0*	53.2*	46.3*		30
32		90.4*	86.0*	80.7*	75.2*	69.4*	63.0*	57.4*	51.7*	46.1*	39.6*	32
34		83.8*	80.1*	75.6*	70.9*	65.9*	60.5*	55.3*	50.3*	44.9*	39.4*	34
36			74.4*	70.6*	67.2*	62.8*	58.0*	53.2*	48.8*	43.7*	39.2*	36
38			68.9*	66.5*	63.1*	59.3*	55.4*	51.1*	47.0*	42.4*	38.4*	38
40			64.4*	61.9*	59.5*	56.3*	52.9*	49.3*	45.2*	41.1*	37.3*	40
44				54.1*	52.2*	50.4*	47.5*	45.0*	41.9*	38.3*	35.1*	44
48					46.2*	44.8*	42.7*	40.8*	38.3*	35.5*	32.7*	48
52					40.3*	39.4*	38.3*	36.7*	35.1*	32.7*	30.3*	52
56						35.1*	34.3*	33.0*	31.6*	29.8*	28.0*	56
60							30.3*	29.8*	28.8*	27.4*	25.7*	60
64								26.7*	25.8*	24.8*	23.7*	64
68								23.8*	23.2*	22.5*	21.5*	68
72									21.1*	20.3*	19.6*	72
76										18.5*	17.8*	76
80											16.2*	80
84											14.5*	84

**Load Chart of LJDB****SCC5500A Crawler Crane-LJDB Configuration 7/9**

Boom length 72m, Boom angle 85°, Jib length 24~84m, Superlift radius 16m, Superlift counterweight 250t,  
Rear counterweight 160t, Carbody counterweight 50t

Radius(m)	Jib length(m)										Radius(m)	
	24	30	36	42	48	54	60	66	72	78		84
18	146*	129*										18
20	137*	124*	110*									20
22	128*	116*	105*	94.6*								22
24	119*	110*	99.9*	90.5*	81.5*	73.2*						24
26	110*	102*	94.6*	86.3*	78.7*	71.0*	63.5*					26
28	101*	95.2*	88.7*	82.0*	75.2*	68.2*	61.6*	55.5*				28
30	93.9*	88.5*	83.0*	77.2*	71.8*	65.4*	59.3*	53.9*	48.5*			30
32		81.5*	77.4*	73.0*	67.8*	62.6*	57.3*	52.3*	47.2*	41.6*	35.7*	32
34		75.6*	72.1*	68.4*	64.3*	59.7*	54.9*	50.3*	45.8*	41.0*	35.5*	34
36		70.7*	67.5*	63.9*	60.5*	56.8*	52.6*	48.3*	44.2*	39.8*	35.3*	36
38			62.7*	60.0*	57.1*	53.6*	50.2*	46.6*	42.7*	38.6*	34.9*	38
40			58.6*	56.3*	53.9*	50.8*	47.8*	44.3*	41.1*	37.4*	33.9*	40
44				48.9*	47.2*	45.5*	43.2*	40.6*	37.8*	34.8*	31.7*	44
48					41.8*	40.3*	38.7*	36.7*	34.7*	32.1*	29.5*	48
52					36.7*	35.8*	34.4*	33.2*	31.4*	29.5*	27.5*	52
56						31.6*	30.9*	29.8*	28.5*	26.8*	25.1*	56
60							27.3*	26.6*	25.6*	24.5*	23.1*	60
64								23.9*	23.1*	22.1*	21.1*	64
68								21.5*	20.7*	20.1*	19.1*	68
72									18.7*	18.1*	17.3*	72
76										16.3*	15.6*	76
80											14.2*	80
84											12.8*	84

Unit: t

## Load Chart of LJDB

SCC5500A Crawler Crane-LJDB Configuration 8/9												
Boom length 78m, Boom angle 85°, Jib length 24~84m, Superlift radius 16m, Superlift counterweight 250t, Rear counterweight 160t, Carbody counterweight 50t												
Radius(m)	Jib length(m)										Radius(m)	
	24	30	36	42	48	54	60	66	72	78		84
18	129*											18
20	122*	110*	98.6*									20
22	115*	104*	94.6*	84.9*								22
24	107*	98.2*	89.8*	81.6*	73.7*							24
26	99.2*	92.3*	85.0*	77.8*	71.0*	64.0*						26
28	92.0*	86.1*	80.3*	73.9*	67.8*	61.8*	55.8*	50.2*				28
30	85.4*	80.1*	75.1*	70.0*	64.6*	59.2*	54.0*	49.0*	43.2*			30
32		74.4*	70.6*	66.2*	61.4*	56.9*	51.8*	47.5*	42.9*	37.1*		32
34		69.1*	65.8*	62.0*	58.2*	54.2*	49.9*	45.6*	41.4*	36.9*	31.6*	34
36		64.7*	61.7*	58.3*	55.1*	51.6*	47.7*	43.8*	40.1*	36.2*	31.4*	36
38			57.3*	54.8*	52.0*	48.6*	45.5*	42.2*	38.8*	35.1*	31.2*	38
40			53.7*	51.1*	48.7*	46.4*	43.3*	40.3*	37.2*	34.0*	30.8*	40
44				44.8*	43.1*	41.4*	39.0*	36.9*	34.3*	31.5*	28.9*	44
48					38.2*	36.7*	35.2*	33.3*	31.2*	29.1*	26.8*	48
52					33.8*	32.6*	31.3*	30.0*	28.4*	26.6*	24.8*	52
56						28.8*	27.9*	26.9*	25.7*	24.3*	22.6*	56
60							24.9*	24.2*	23.3*	22.0*	20.7*	60
64							22.2*	21.7*	20.8*	20.0*	18.8*	64
68								19.3*	18.6*	18.0*	17.0*	68
72									16.8*	16.2*	15.3*	72
76										14.5*	13.9*	76
80										13.0*	12.5*	80
84											11.2*	84

**Load Chart of LJDB****SCC5500A Crawler Crane-LJDB Configuration 9/9**

Boom length 84m, Boom angle 85°, Jib length 24~84m, Superlift radius 16m, Superlift counterweight 250t,  
Rear counterweight 160t, Carbody counterweight 50t

Radius(m)	Jib length(m)										Radius(m)	
	24	30	36	42	48	54	60	66	72	78		84
18	114*											18
20	109*	98.2*										20
22	102*	93.5*	84.4*	76.1*								22
24	95.8*	88.2*	80.6*	73.1*	66.4*							24
26	89.6*	83.0*	76.8*	70.0*	63.9*	57.7*						26
28	83.3*	77.9*	72.5*	66.9*	61.4*	55.7*	50.3*					28
30	77.9*	72.6*	68.3*	63.3*	58.5*	53.6*	48.9*	43.7*	38.1*			30
32	72.6*	68.0*	63.8*	59.8*	55.5*	51.1*	46.9*	42.8*	37.7*	32.6*		32
34		63.2*	59.9*	56.4*	52.6*	48.8*	45.1*	41.4*	37.4*	32.4*	27.7*	34
36		58.8*	56.2*	53.1*	49.8*	46.7*	43.0*	39.6*	36.4*	32.0*	27.5*	36
38			52.3*	49.6*	47.0*	44.3*	41.2*	38.1*	35.1*	31.7*	27.3*	38
40			49.0*	46.6*	44.3*	41.9*	39.2*	36.6*	33.6*	30.6*	27.0*	40
44				40.9*	39.5*	37.4*	35.3*	33.3*	30.9*	28.4*	25.9*	44
48				35.9*	34.8*	33.4*	31.7*	29.9*	28.2*	26.1*	24.1*	48
52					30.8*	29.7*	28.4*	27.2*	25.6*	23.9*	22.1*	52
56						26.3*	25.3*	24.3*	23.1*	21.7*	20.2*	56
60							22.6*	21.7*	20.8*	19.6*	18.4*	60
64							20.2*	19.4*	18.7*	17.7*	16.7*	64
68								17.4*	16.7*	16.0*	15.2*	68
72									14.9*	14.3*	13.6*	72
76										12.8*	12.2*	76
80										11.6*	11.0*	80
84											9.7*	84







## Zhejiang Sany Equipment Co.,LTD

Sany Industrial Park, No.2087 Daishan Road, Wuxing District, Huzhou, Zhejiang  
Province, China Zip 313028  
Service hotline 400 887 8318  
Complaints hotline 400 887 9318

— Gent information —

**Reminder:**

For safe and reliable operation of the diesel engines, please fill Grade IV machines with Grade IV diesel and urea solution conforming to related national standards. Please refer to the operating instructions and related standards for details.

Any change in the technical parameters and configuration due to advancement in technology may occur without prior notice. The machine in the figures may include auxiliary equipment. This brochure is for reference only, and goods in kind shall prevail. Copyright at Sany Heavy Industry. No part of this catalogue may be copied, recorded or used for any purpose without written approval from Sany Heavy Industry.

© Printed in November 2020 in China

[www.sany.com.cn](http://www.sany.com.cn)



Instantly scanning for  
reading more